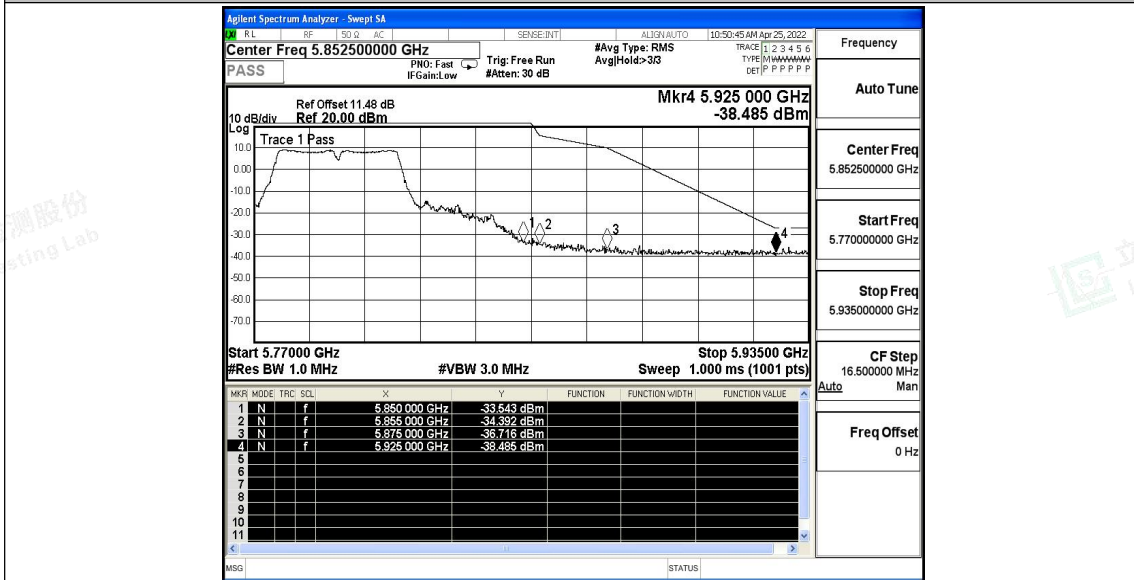
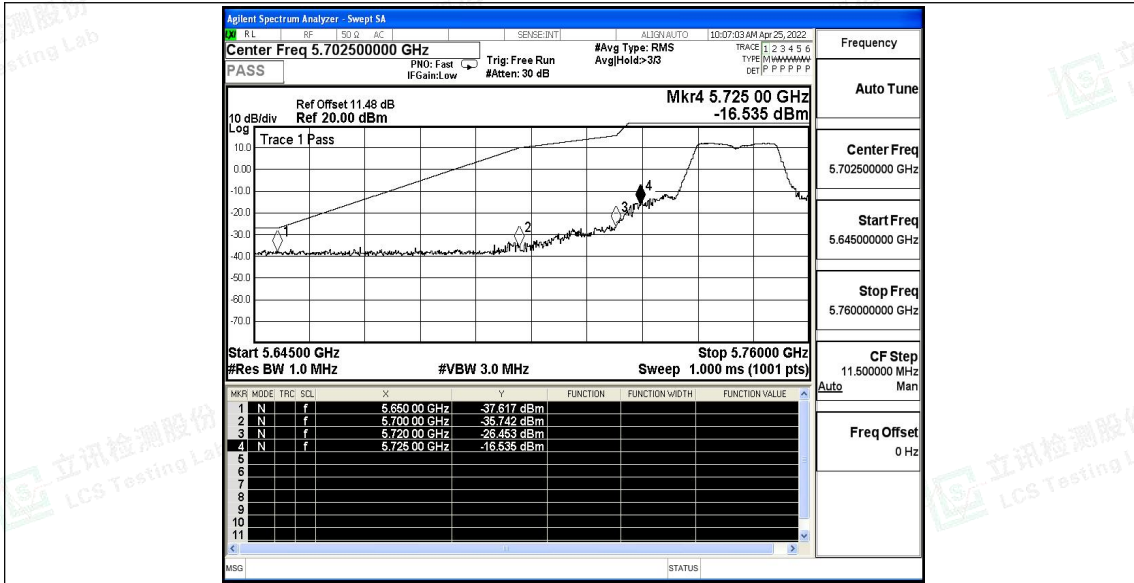


11N40SISO\_Ant1\_High\_5795\_Peak

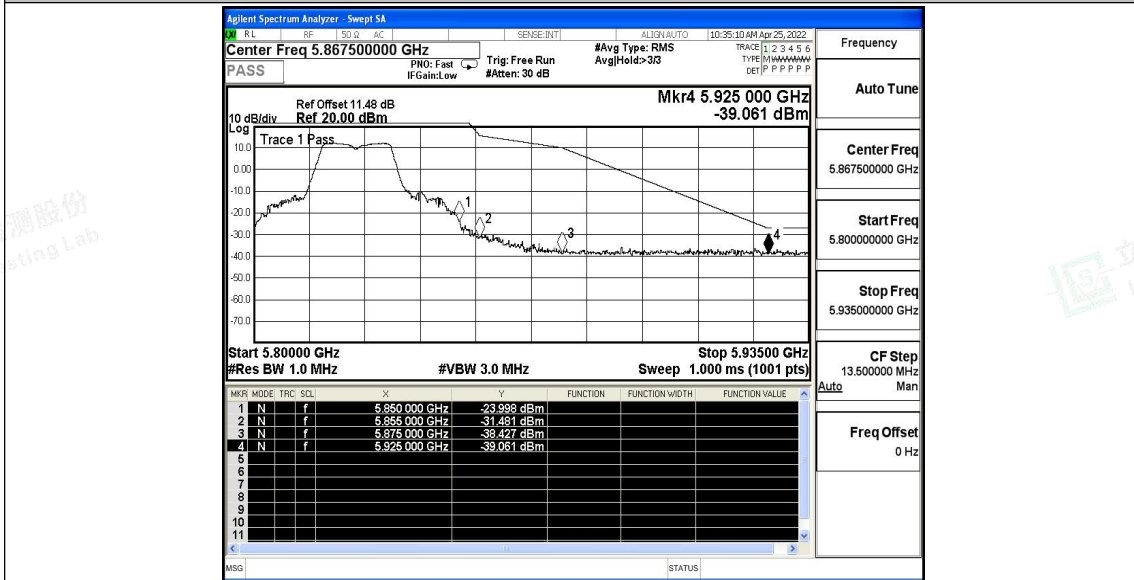


11AC20SISO\_Ant1\_Low\_5745\_Peak



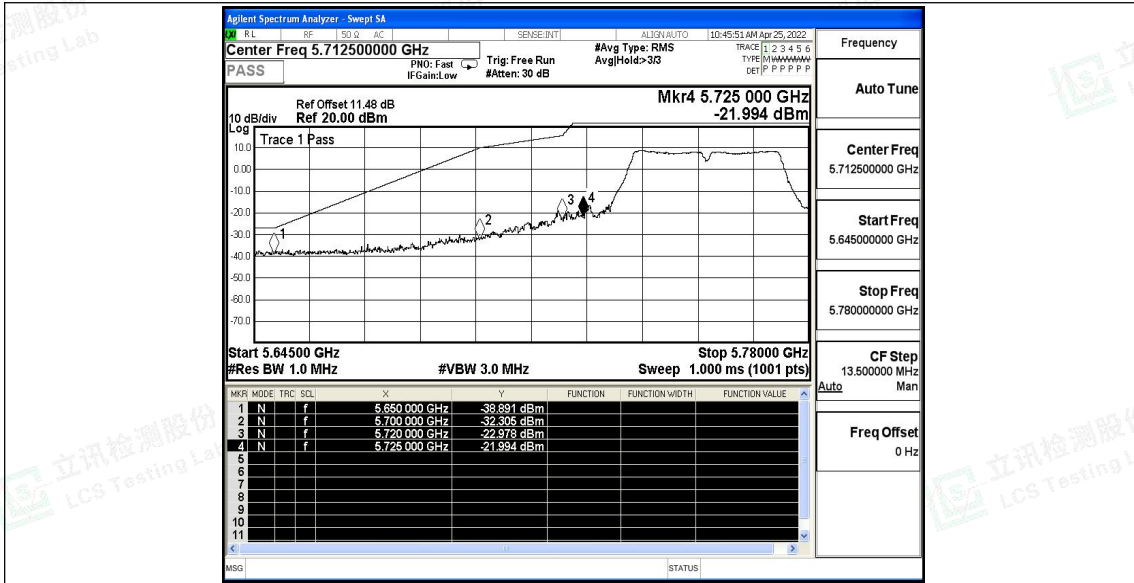


11AC20SISO\_Ant1\_High\_5825\_Peak

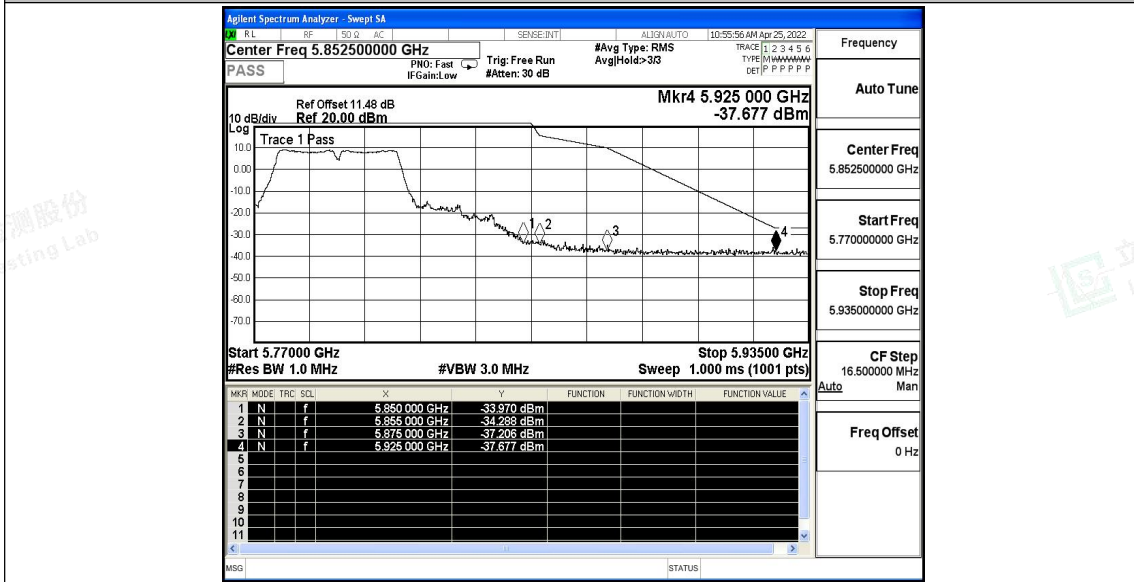


11AC40SISO\_Ant1\_Low\_5755\_Peak



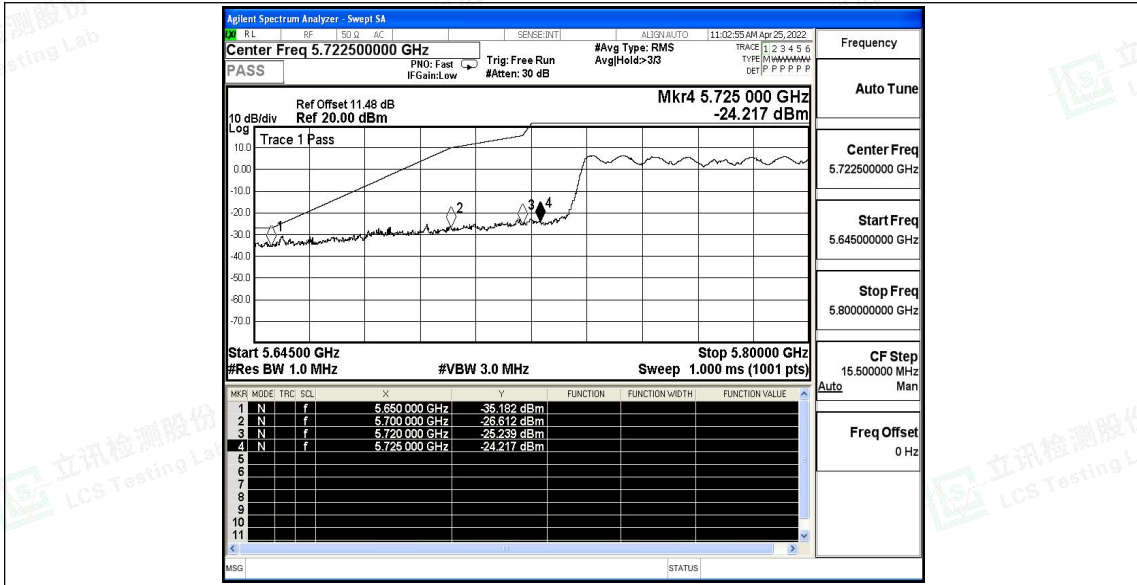


11AC40SISO\_Ant1\_High\_5795\_Peak

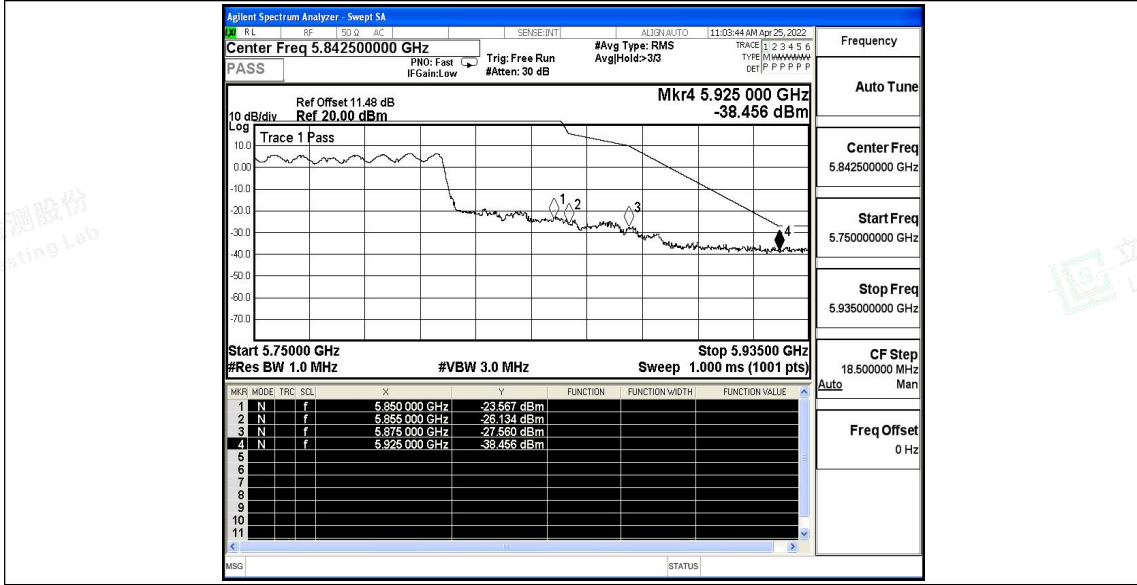


11AC80SISO\_Ant1\_Low\_5775\_Peak





11AC80SISO\_Ant1\_High\_5775\_Peak





### E.5 Frequency Stability

#### Test Result

TestMode	Antenna	Channel	Voltage					Limit (ppm)	Verdict
			Voltage [Vdc]	Temperature (°C)	Deviation (Hz)	Deviation (ppm)			
11A	Ant1	5745	NV	NT	-12000	-2.088773	20	PASS	
			LV	NT	-12000	-2.088773	20	PASS	
			HV	NT	-12000	-2.088773	20	PASS	
		5785	NV	NT	-11000	-1.901469	20	PASS	
			LV	NT	-12000	-2.07433	20	PASS	
			HV	NT	-13000	-2.247191	20	PASS	
		5825	NV	NT	-12000	-2.060086	20	PASS	
			LV	NT	-12000	-2.060086	20	PASS	
			HV	NT	-12000	-2.060086	20	PASS	
11N20SI SO	Ant1	5745	NV	NT	-11000	-1.914708	20	PASS	
			LV	NT	-13000	-2.262837	20	PASS	
			HV	NT	-8000	-1.392515	20	PASS	
		5785	NV	NT	-9000	-1.555748	20	PASS	
			LV	NT	3000	0.518583	20	PASS	
			HV	NT	5000	0.864304	20	PASS	
		5825	NV	NT	3000	0.515021	20	PASS	
			LV	NT	7000	1.201717	20	PASS	
			HV	NT	8000	1.373391	20	PASS	
11N40SI SO	Ant1	5755	NV	NT	-8000	-1.390096	20	PASS	
			LV	NT	-11000	-1.911381	20	PASS	
			HV	NT	-11000	-1.911381	20	PASS	
		5795	NV	NT	-9000	-1.553063	20	PASS	
			LV	NT	-10000	-1.725626	20	PASS	
			HV	NT	-10000	-1.725626	20	PASS	
11AC20S ISO	Ant1	5180	NV	NT	-10000	-1.930502	20	PASS	
			LV	NT	-7000	-1.351351	20	PASS	
			HV	NT	-6000	-1.158301	20	PASS	
		5220	NV	NT	-3000	-0.574713	20	PASS	
			LV	NT	4000	0.766284	20	PASS	
			HV	NT	9000	1.724138	20	PASS	
		5240	NV	NT	-1000	-0.19084	20	PASS	
			LV	NT	0	0	20	PASS	
			HV	NT	-1000	-0.19084	20	PASS	
5745	NV	NT	4000	0.696258	20	PASS			





		5785	LV	NT	4000	0.696258	20	PASS		
			HV	NT	4000	0.696258	20	PASS		
			NV	NT	8000	1.382887	20	PASS		
			LV	NT	8000	1.382887	20	PASS		
			HV	NT	8000	1.382887	20	PASS		
			NV	NT	-9000	-1.545064	20	PASS		
		5825	LV	NT	0	0	20	PASS		
			HV	NT	5000	0.858369	20	PASS		
			NV	NT	-2000	-0.385356	20	PASS		
		11AC40S ISO	Ant1	5190	LV	NT	7000	1.348748	20	PASS
					HV	NT	12000	2.312139	20	PASS
					NV	NT	-5000	-0.956023	20	PASS
5230	LV			NT	0	0	20	PASS		
	HV			NT	1000	0.191205	20	PASS		
	NV			NT	8000	1.390096	20	PASS		
5755	LV			NT	8000	1.390096	20	PASS		
	HV			NT	9000	1.563858	20	PASS		
	NV			NT	8000	1.3805	20	PASS		
5795	LV			NT	9000	1.553063	20	PASS		
	HV			NT	9000	1.553063	20	PASS		
	NV			NT	2000	0.383877	20	PASS		
11AC80S ISO	Ant1			5210	LV	NT	7000	1.34357	20	PASS
					HV	NT	11000	2.111324	20	PASS
					NV	NT	-8000	-1.385281	20	PASS
				5775	LV	NT	3000	0.519481	20	PASS
					HV	NT	7000	1.212121	20	PASS
					NV	NT	-13000	-2.247191	20	PASS

Temperature										
TestMode	Antenna	Channel	Voltage [Vdc]	Temperature (°C)	Deviation (Hz)	Deviation (ppm)	Limit (ppm)	Verdict		
11A	Ant1	5745	NV	-30	-12000	-2.088773	20	PASS		
			NV	-20	-12000	-2.088773	20	PASS		
			NV	-10	-11000	-1.914708	20	PASS		
			NV	0	-5000	-0.870322	20	PASS		
			NV	10	-3000	-0.522193	20	PASS		
			NV	20	-1000	-0.174064	20	PASS		
			NV	30	-1000	-0.174064	20	PASS		
			NV	40	0	0	20	PASS		
		5785	NV	50	0	0	20	PASS		
			NV	-30	-13000	-2.247191	20	PASS		
					NV	-20	-13000	-2.247191	20	PASS



Shenzhen LCS Compliance Testing Laboratory Ltd.  
 Add: 101, 201 Bldg A & 301 Bldg C, Juji Industrial Park Yabianxueziwei, Shajing Street, Baoan District, Shenzhen, 518000, China  
 Tel: +(86) 0755-82591330 | E-mail: webmaster@lcs-cert.com | Web: www.lcs-cert.com  
 Scan code to check authenticity





			NV	-10	-14000	-2.420052	20	PASS	
			NV	0	-14000	-2.420052	20	PASS	
			NV	10	-14000	-2.420052	20	PASS	
			NV	20	-13000	-2.247191	20	PASS	
			NV	30	-14000	-2.420052	20	PASS	
			NV	40	-14000	-2.420052	20	PASS	
			NV	50	-13000	-2.247191	20	PASS	
		5825		NV	-30	-12000	-2.060086	20	PASS
				NV	-20	-12000	-2.060086	20	PASS
				NV	-10	-12000	-2.060086	20	PASS
				NV	0	-5000	-0.858369	20	PASS
				NV	10	-3000	-0.515021	20	PASS
				NV	20	-1000	-0.171674	20	PASS
				NV	30	0	0	20	PASS
				NV	40	1000	0.171674	20	PASS
				NV	50	1000	0.171674	20	PASS
				11N20SI SO	Ant1	5745	NV	-30	-2000
NV	-20	1000	0.174064				20	PASS	
NV	-10	2000	0.348129				20	PASS	
NV	0	2000	0.348129				20	PASS	
NV	10	3000	0.522193				20	PASS	
NV	20	3000	0.522193				20	PASS	
NV	30	3000	0.522193				20	PASS	
NV	40	4000	0.696258				20	PASS	
5785	NV	50	4000			0.696258	20	PASS	
	NV	-30	6000			1.037165	20	PASS	
	NV	-20	6000			1.037165	20	PASS	
	NV	-10	6000			1.037165	20	PASS	
	NV	0	7000			1.210026	20	PASS	
	NV	10	7000			1.210026	20	PASS	
	NV	20	7000			1.210026	20	PASS	
	NV	30	7000			1.210026	20	PASS	
5825	NV	40	7000			1.210026	20	PASS	
	NV	50	7000	1.210026	20	PASS			
	NV	-30	8000	1.373391	20	PASS			
	NV	-20	8000	1.373391	20	PASS			
	NV	-10	9000	1.545064	20	PASS			
	NV	0	9000	1.545064	20	PASS			
	NV	10	9000	1.545064	20	PASS			
	NV	20	9000	1.545064	20	PASS			





			NV	30	9000	1.545064	20	PASS
			NV	40	9000	1.545064	20	PASS
			NV	50	9000	1.545064	20	PASS
11N40SI SO	Ant1	5755	NV	-30	-1000	-0.173762	20	PASS
			NV	-20	4000	0.695048	20	PASS
			NV	-10	6000	1.042572	20	PASS
			NV	0	7000	1.216334	20	PASS
			NV	10	7000	1.216334	20	PASS
			NV	20	7000	1.216334	20	PASS
			NV	30	8000	1.390096	20	PASS
			NV	40	8000	1.390096	20	PASS
			NV	50	8000	1.390096	20	PASS
		5795	NV	-30	-2000	-0.345125	20	PASS
			NV	-20	4000	0.69025	20	PASS
			NV	-10	6000	1.035375	20	PASS
			NV	0	7000	1.207938	20	PASS
			NV	10	7000	1.207938	20	PASS
			NV	20	8000	1.3805	20	PASS
			NV	30	8000	1.3805	20	PASS
			NV	40	8000	1.3805	20	PASS
			NV	50	8000	1.3805	20	PASS
11AC20S ISO	Ant1	5180	NV	-30	-6000	-1.158301	20	PASS
			NV	-20	3000	0.579151	20	PASS
			NV	-10	6000	1.158301	20	PASS
			NV	0	7000	1.351351	20	PASS
			NV	10	8000	1.544402	20	PASS
			NV	20	9000	1.737452	20	PASS
			NV	30	10000	1.930502	20	PASS
			NV	40	10000	1.930502	20	PASS
			NV	50	11000	2.123552	20	PASS
		5220	NV	-30	11000	2.10728	20	PASS
			NV	-20	11000	2.10728	20	PASS
			NV	-10	12000	2.298851	20	PASS
			NV	0	13000	2.490421	20	PASS
			NV	10	13000	2.490421	20	PASS
			NV	20	13000	2.490421	20	PASS
			NV	30	14000	2.681992	20	PASS
			NV	40	14000	2.681992	20	PASS
			NV	50	14000	2.681992	20	PASS
		5240	NV	-30	-1000	-0.19084	20	PASS







			NV	-20	-2000	-0.381679	20	PASS		
			NV	-10	3000	0.572519	20	PASS		
			NV	0	10000	1.908397	20	PASS		
			NV	10	12000	2.290076	20	PASS		
			NV	20	13000	2.480916	20	PASS		
			NV	30	13000	2.480916	20	PASS		
			NV	40	14000	2.671756	20	PASS		
			NV	50	14000	2.671756	20	PASS		
		5745	NV	-30	5000	0.870322	20	PASS		
			NV	-20	5000	0.870322	20	PASS		
			NV	-10	5000	0.870322	20	PASS		
			NV	0	5000	0.870322	20	PASS		
			NV	10	5000	0.870322	20	PASS		
			NV	20	5000	0.870322	20	PASS		
			NV	30	5000	0.870322	20	PASS		
			NV	40	5000	0.870322	20	PASS		
		5785	NV	-30	8000	1.382887	20	PASS		
			NV	-20	8000	1.382887	20	PASS		
			NV	-10	8000	1.382887	20	PASS		
			NV	0	8000	1.382887	20	PASS		
			NV	10	8000	1.382887	20	PASS		
			NV	20	8000	1.382887	20	PASS		
			NV	30	8000	1.382887	20	PASS		
			NV	40	8000	1.382887	20	PASS		
		5825	NV	-30	7000	1.201717	20	PASS		
			NV	-20	7000	1.201717	20	PASS		
			NV	-10	8000	1.373391	20	PASS		
			NV	0	8000	1.373391	20	PASS		
			NV	10	9000	1.545064	20	PASS		
			NV	20	9000	1.545064	20	PASS		
			NV	30	9000	1.545064	20	PASS		
			NV	40	9000	1.545064	20	PASS		
		11AC40S ISO	Ant1	5190	NV	-30	14000	2.697495	20	PASS
					NV	-20	14000	2.697495	20	PASS
					NV	-10	15000	2.890173	20	PASS
					NV	0	15000	2.890173	20	PASS
NV	10				16000	3.082852	20	PASS		





			NV	20	16000	3.082852	20	PASS		
			NV	30	16000	3.082852	20	PASS		
			NV	40	16000	3.082852	20	PASS		
			NV	50	17000	3.27553	20	PASS		
		5230	NV	-30	0	0	0	20	PASS	
			NV	-20	0	0	0	20	PASS	
			NV	-10	0	0	0	20	PASS	
			NV	0	0	0	0	20	PASS	
			NV	10	11000	2.10325	20	PASS		
			NV	20	13000	2.48566	20	PASS		
			NV	30	14000	2.676864	20	PASS		
			NV	40	15000	2.868069	20	PASS		
			NV	50	15000	2.868069	20	PASS		
			5755	NV	-30	9000	1.563858	20	PASS	
				NV	-20	9000	1.563858	20	PASS	
				NV	-10	9000	1.563858	20	PASS	
		NV		0	9000	1.563858	20	PASS		
		NV		10	9000	1.563858	20	PASS		
		NV		20	9000	1.563858	20	PASS		
		NV		30	9000	1.563858	20	PASS		
		NV		40	9000	1.563858	20	PASS		
		5795	NV	-30	9000	1.553063	20	PASS		
			NV	-20	9000	1.553063	20	PASS		
			NV	-10	9000	1.553063	20	PASS		
			NV	0	9000	1.553063	20	PASS		
			NV	10	9000	1.553063	20	PASS		
			NV	20	9000	1.553063	20	PASS		
			NV	30	9000	1.553063	20	PASS		
			NV	40	9000	1.553063	20	PASS		
		11AC80S ISO	Ant1	5210	NV	-30	12000	2.303263	20	PASS
					NV	-20	12000	2.303263	20	PASS
					NV	-10	12000	2.303263	20	PASS
					NV	0	12000	2.303263	20	PASS
					NV	10	13000	2.495202	20	PASS
					NV	20	13000	2.495202	20	PASS
					NV	30	13000	2.495202	20	PASS
					NV	40	13000	2.495202	20	PASS
					NV	50	13000	2.495202	20	PASS





		5775	NV	-30	8000	1.385281	20	PASS
			NV	-20	8000	1.385281	20	PASS
			NV	-10	9000	1.558442	20	PASS
			NV	0	9000	1.558442	20	PASS
			NV	10	9000	1.558442	20	PASS
			NV	20	9000	1.558442	20	PASS
			NV	30	9000	1.558442	20	PASS
			NV	40	9000	1.558442	20	PASS
			NV	50	9000	1.558442	20	PASS





### E.6 Duty Cycle

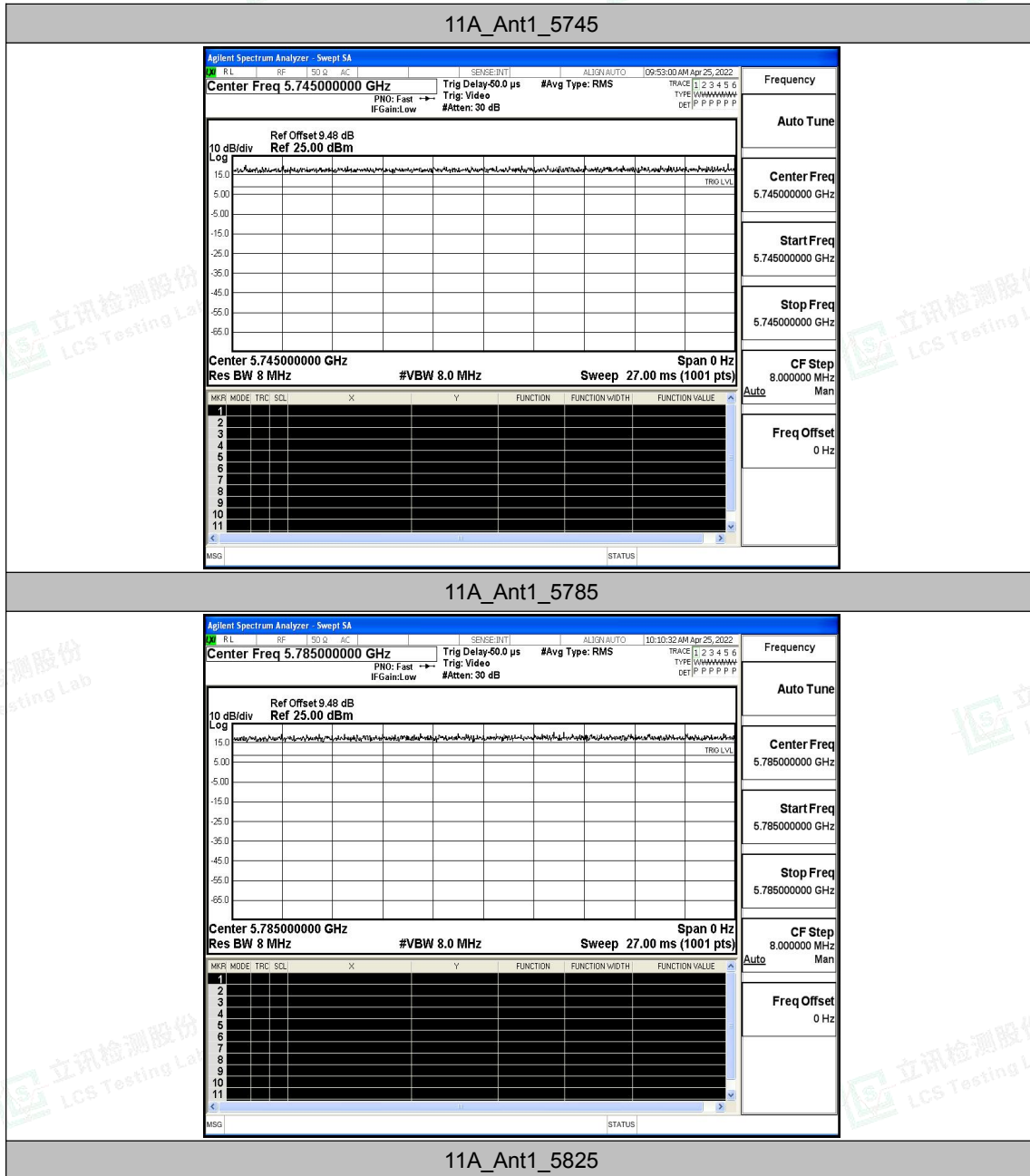
#### Test Result

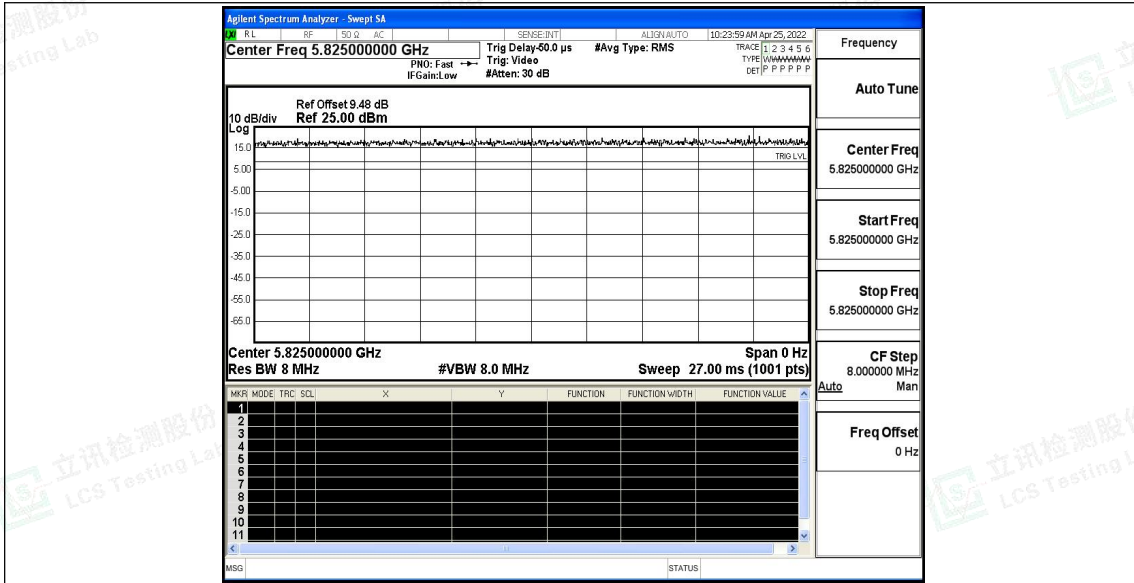
TestMode	Antenna	Channel	Transmission Duration [ms]	Transmission Period [ms]	Duty Cycle [%]
11A	Ant1	5745	27.00	27.00	100.00
		5785	27.00	27.00	100.00
		5825	27.00	27.00	100.00
11N20SISO	Ant1	5745	27.00	27.00	100.00
		5785	27.00	27.00	100.00
		5825	27.00	27.00	100.00
11N40SISO	Ant1	5755	27.00	27.00	100.00
		5795	27.00	27.00	100.00
11AC20SISO	Ant1	5745	27.00	27.00	100.00
		5785	27.00	27.00	100.00
		5825	27.00	27.00	100.00
11AC40SISO	Ant1	5755	27.00	27.00	100.00
		5795	27.00	27.00	100.00
11AC80SISO	Ant1	5775	27.00	27.00	100.00



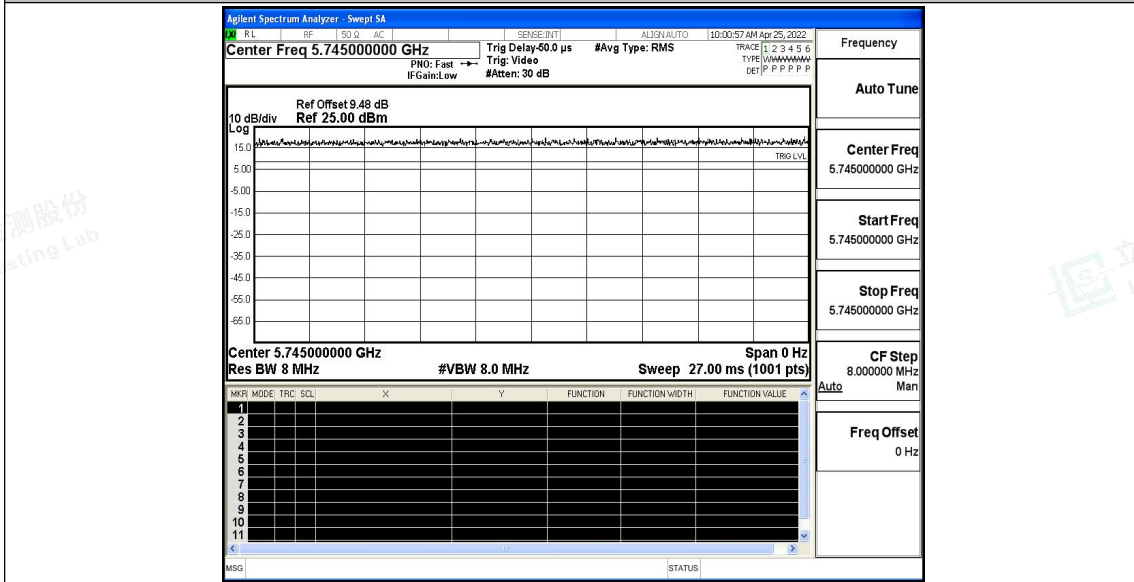


### Test Graphs





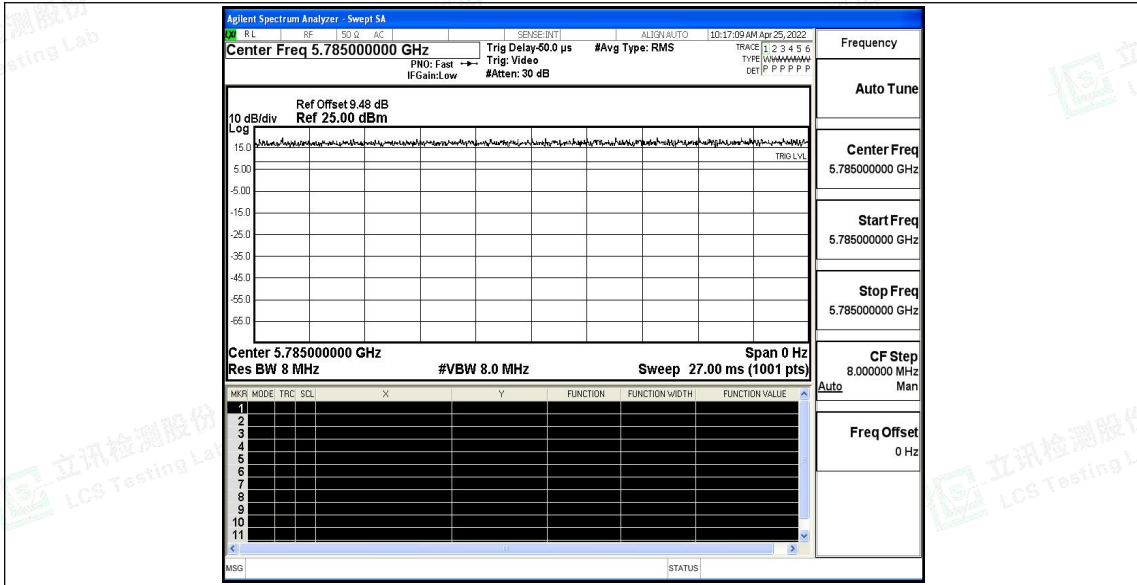
11N20SISO\_Ant1\_5745



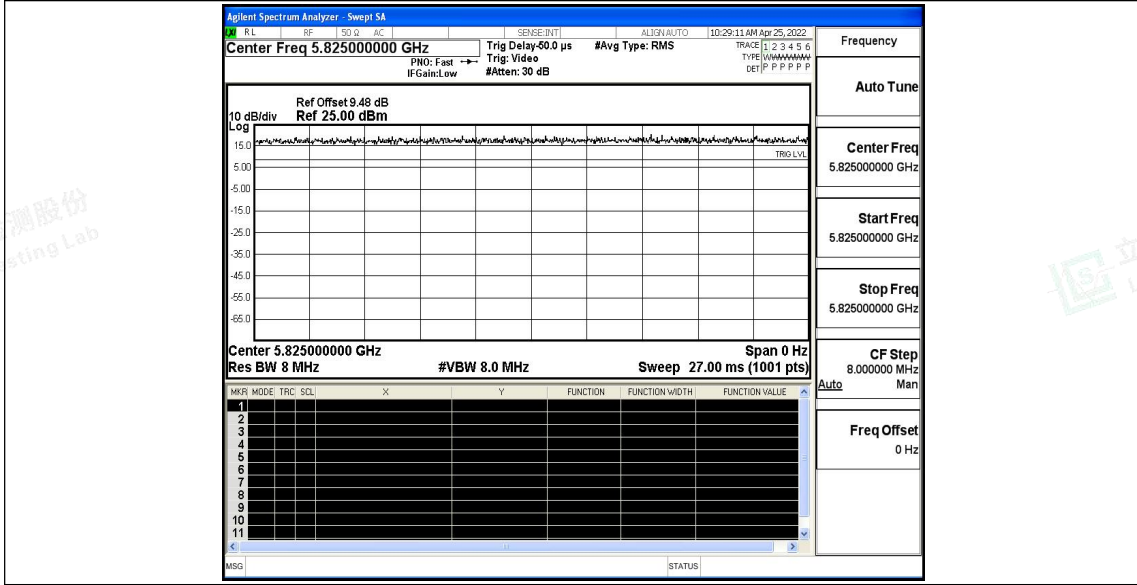
11N20SISO\_Ant1\_5785





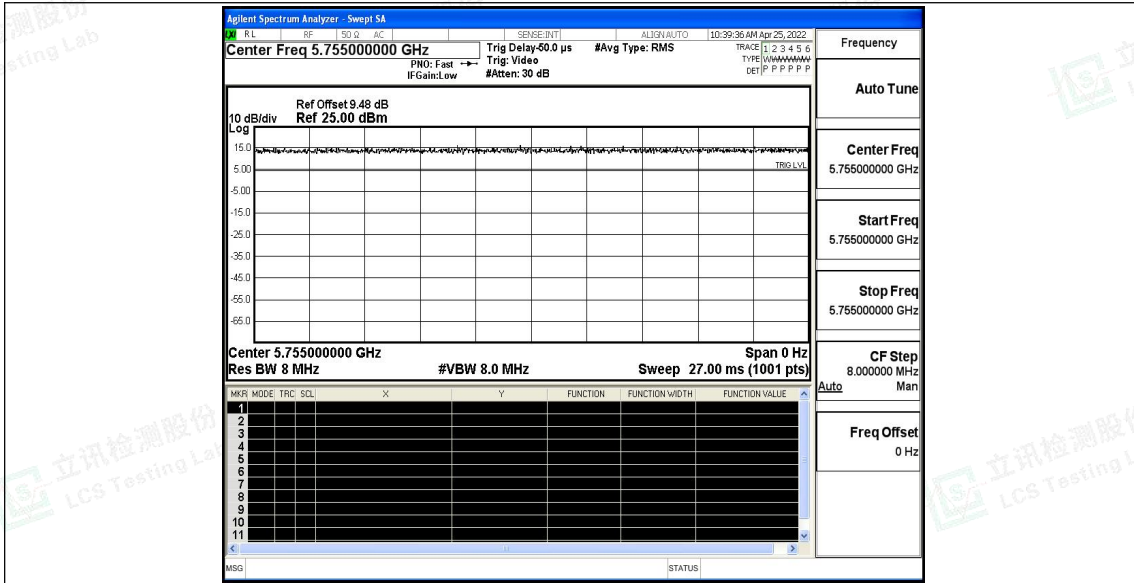


11N20SISO\_Ant1\_5825

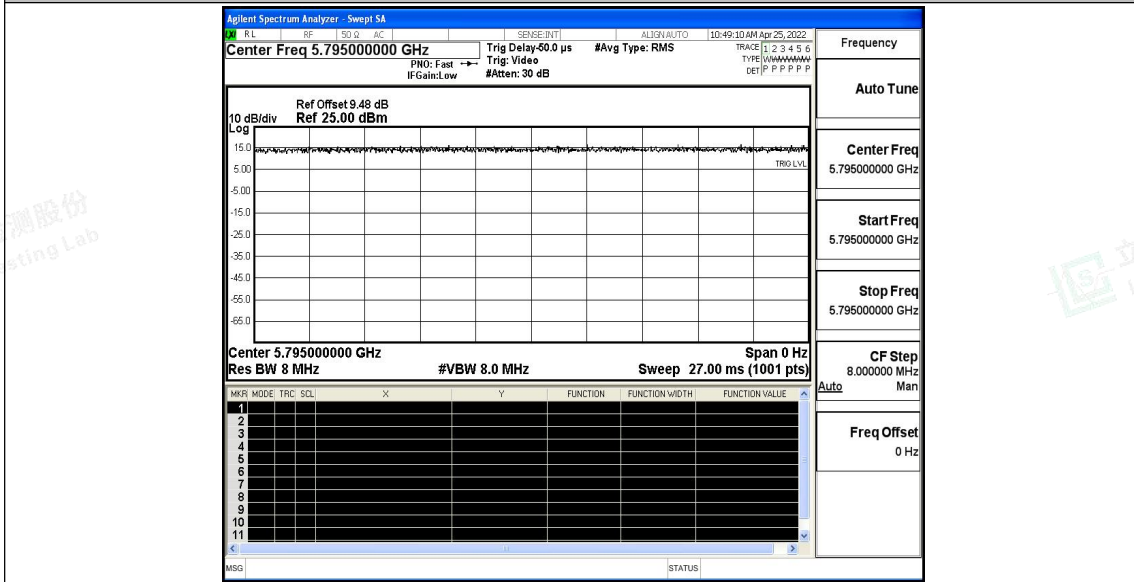


11N40SISO\_Ant1\_5755



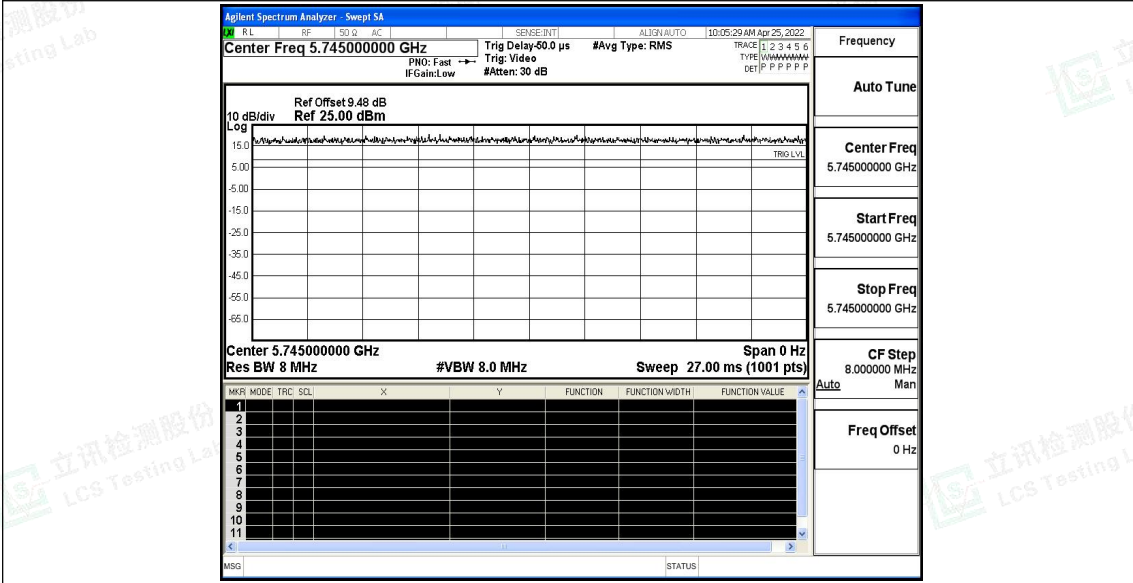


11N40SISO\_Ant1\_5795

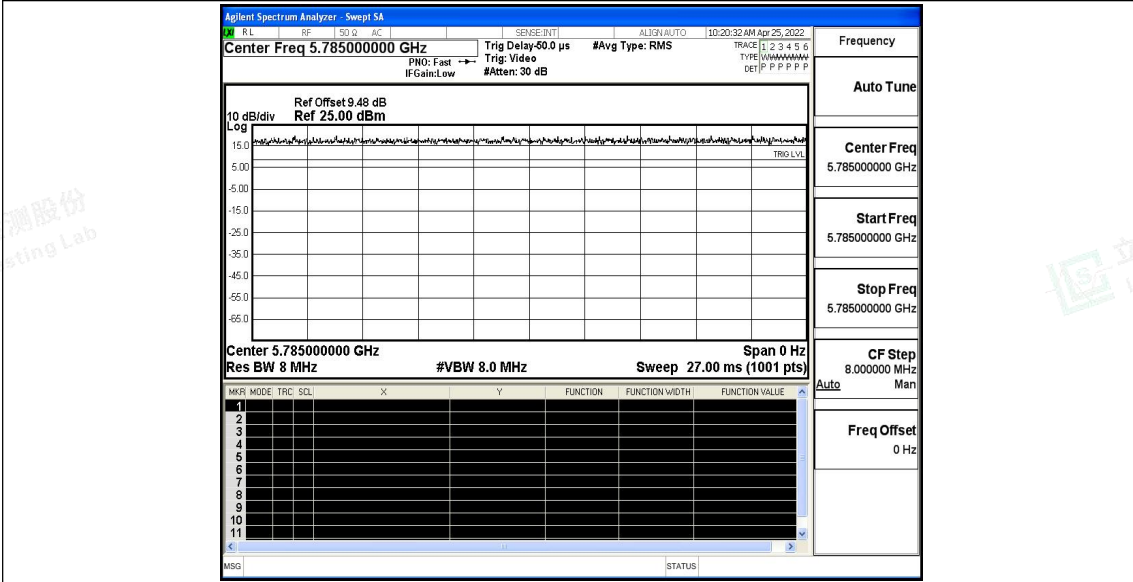


11AC20SISO\_Ant1\_5745



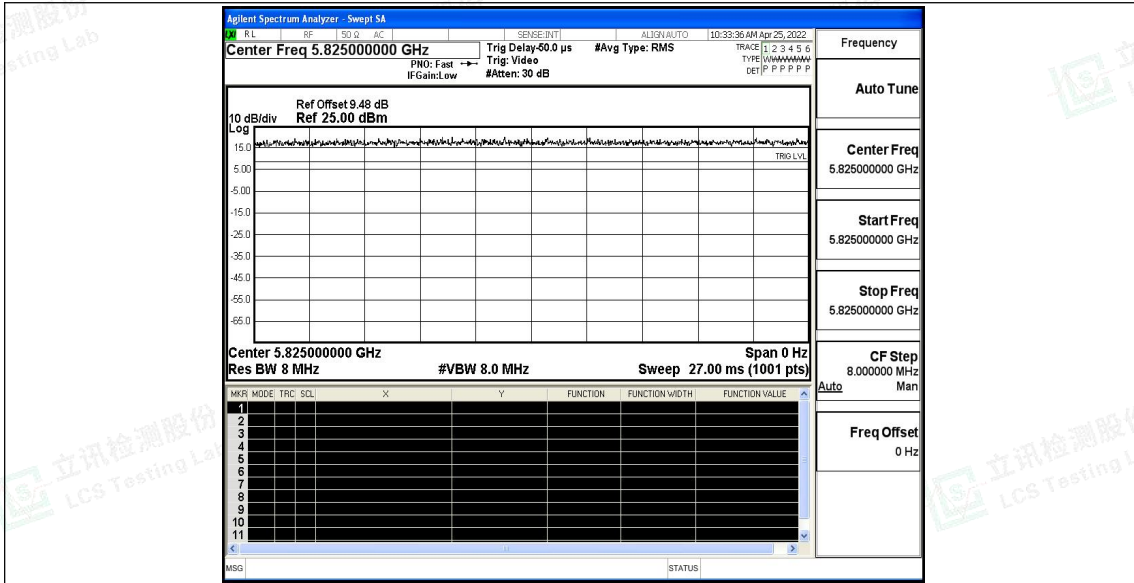


11AC20SISO\_Ant1\_5785

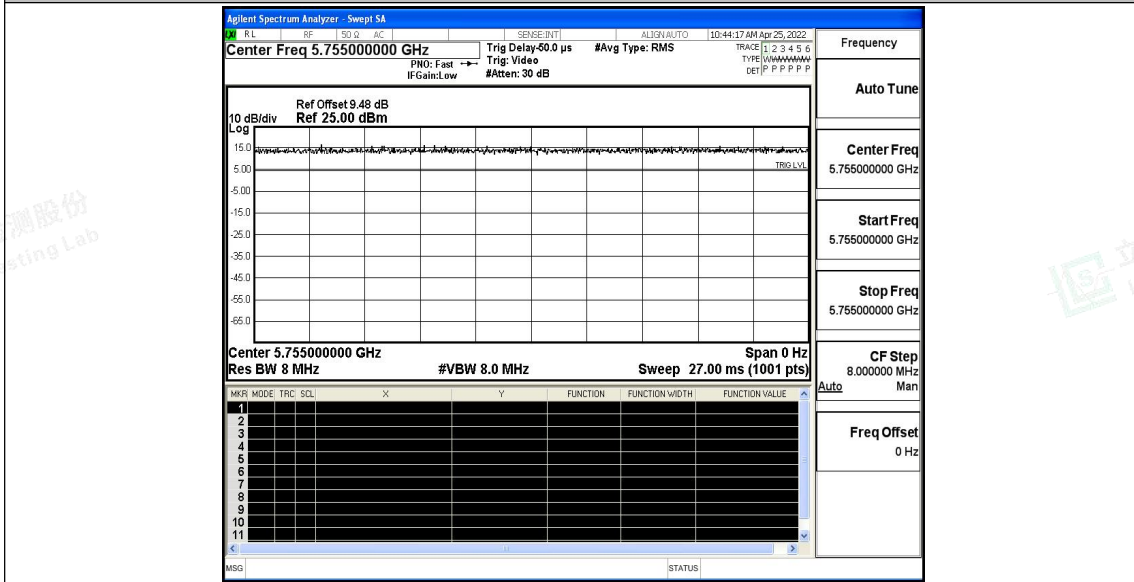


11AC20SISO\_Ant1\_5825



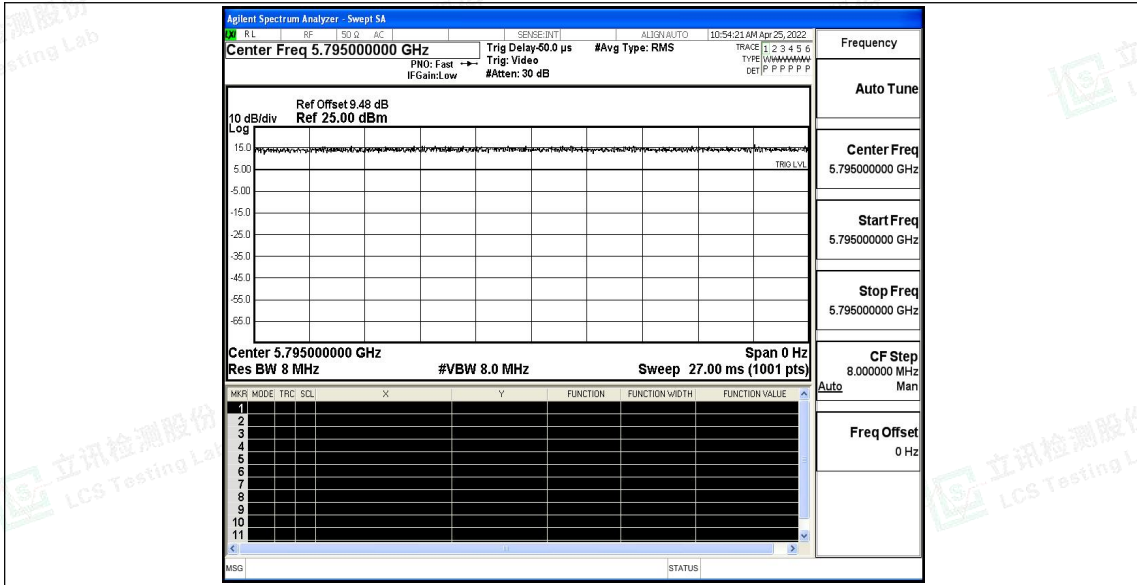


11AC40SISO\_Ant1\_5755



11AC40SISO\_Ant1\_5795





11AC80SISO\_Ant1\_5775

