

日历机说明书

尺寸: 145*200mm

封面: 200g铜版纸彩色印刷

内页: 128g铜版纸彩色印刷

封二封三留白

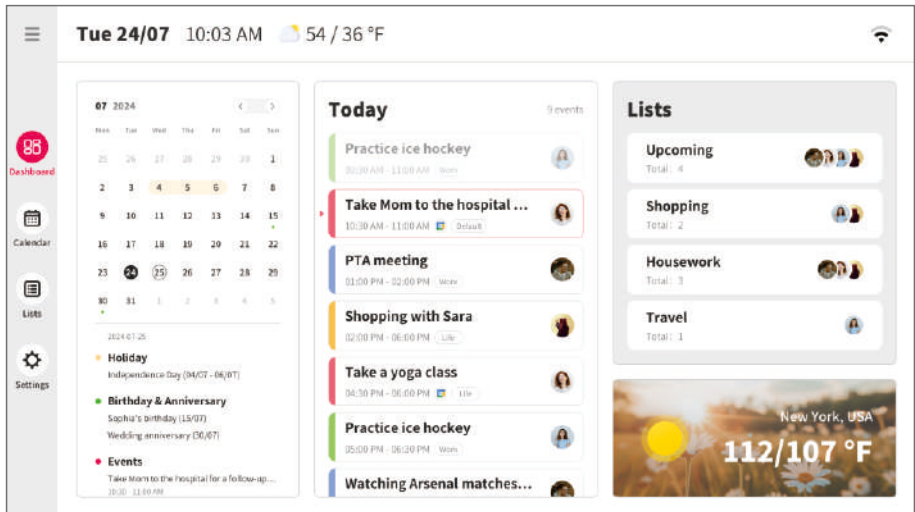
BIGASUO

Digital Calendar
User Manual

Table of Contents

Dashboard	01
How to Sync External Calendar to Your Account	02
Important Notes for Calendar Sync	03
Create Event	04
Create List	06
General Settings	08
Calendar Settings	09
Account Management	10
FAQ	12
FCC Warning Statement	13
EU Declaration of Conformity	14
ISED Statement	16

Dashboard



Note: As the software version may be periodically updated, the interface displayed may vary depending on the calendar device.

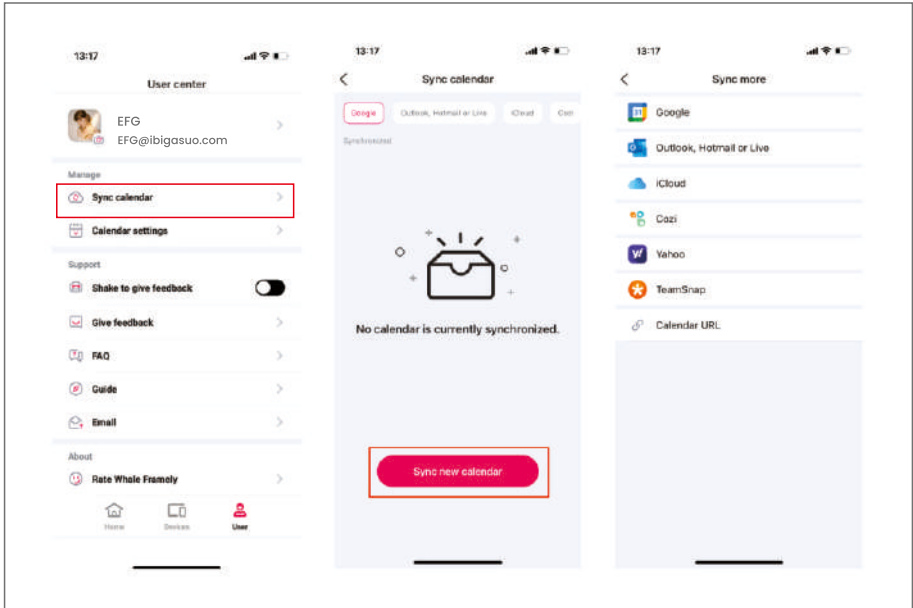
Quick Overview of Your Schedule:

Month View:	View the entire month's events at a glance. Switch between dates to check the specific plans for each day.
Today's Events:	Focus on today's agenda to help you stay on top of daily tasks. Completed events appear in grey, while pending events remain in their usual status. The current time period is highlighted for easy reference.
List View:	Displays ongoing categories and the number of events within each category, making it easier to manage and review your schedule.
Weather/ Temperature:	Automatically updates with the local time zone's weather and temperature. The temperature is displayed in both Celsius and Fahrenheit, with Fahrenheit set as the default.

How to sync External calendar to your account

Before sync external calendar, please refer to the Quick Start Card to ensure that your calendar device and the Whale Framely app have been successfully paired.

1: Sync operations can only be completed through the app. See the following picture:



When you sync your external calendar (such as Google, iCloud, etc.) with Whale Framely, any changes made to the source calendar will be automatically updated in the Whale Framely calendar.

Note:

iCloud compatibility: iPhone 6s or later, with at least 16GB of storage, running iOS 13.0 or higher.

Video tutorials

Scan this QR code, you'll find a step tutorial on how to sync your Google Calendar, Apple Calendar (iCloud), Outlook Calendar, and compatible calendars on your account.



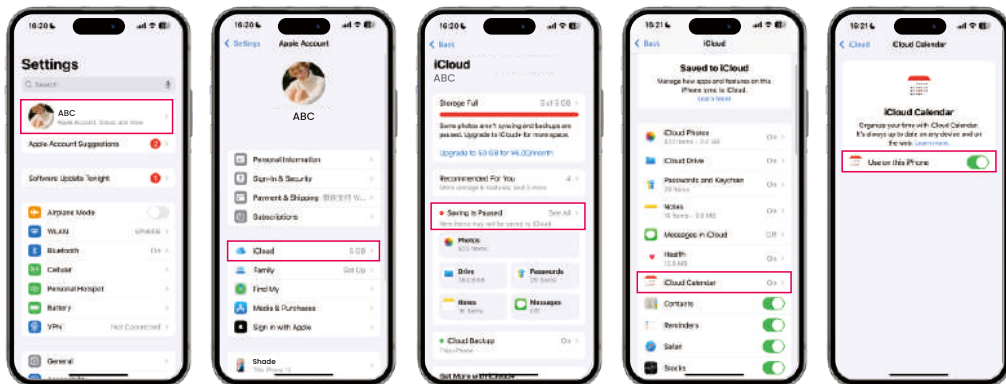
Important Notes for Calendar Sync

1. Google Calendar is the only service that supports two-way sync (changes update in both directions). For other calendars (e.g., iCloud, Outlook, etc.), the sync is one-way (changes update only from the app to the calendar).

2. **iCloud Sync:** If you can't find the "Share Link" option as prompted by the app, make sure calendar permissions are enabled in your iCloud settings. Follow these steps:

- (1) Go to Settings > [Your Name] > iCloud.
- (2) Tap See All (or Show All), then select iCloud Calendar.
- (3) Turn Use on this iPhone on.

Note: Screenshots provided are for reference only. The exact layout and options may vary slightly depending on your operating system version, so some features might be located in different places.

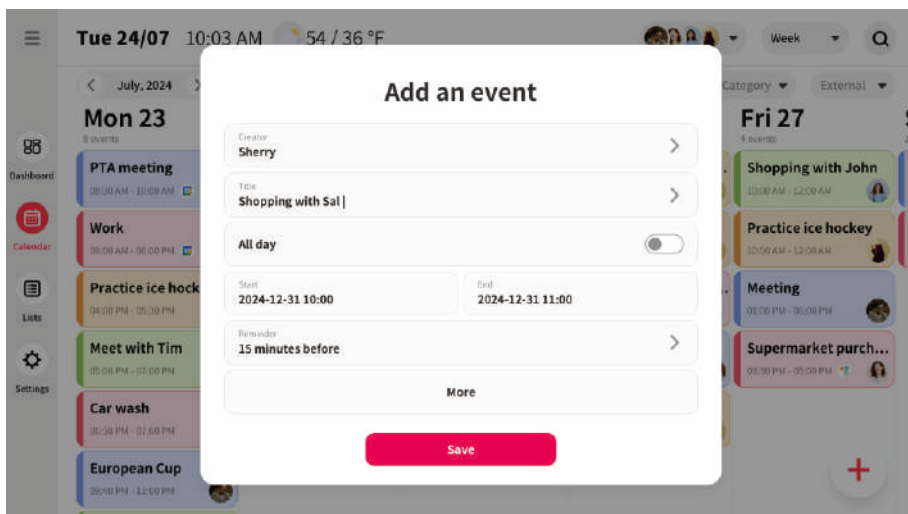


Create Event

You can create events directly through your calendar or the Whale Framely app. Your event will be automatically synced between your calendar and the app.

• How to Create an Event on Your Digital Calendar ?

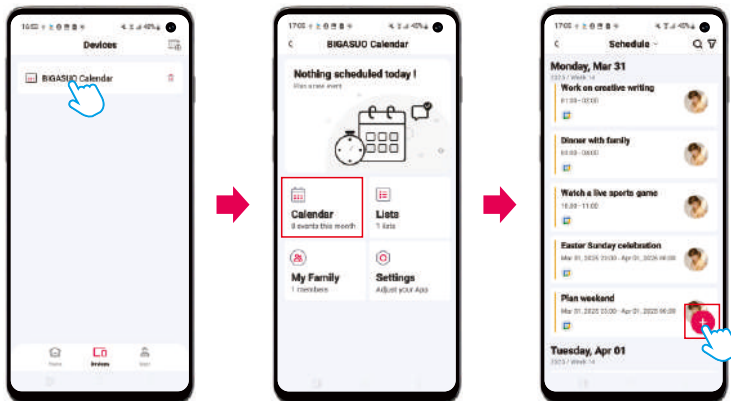
- 1: In the calendar section, Tap the “+” icon in the bottom right corner of the screen
- 2: Enter event details: On the next page, fill in the event title, time, and any other relevant details.
- 3: Save event: Once you’ve reviewed the information and confirmed it’s correct, tap the “Save” button. The event will be instantly added to your calendar.



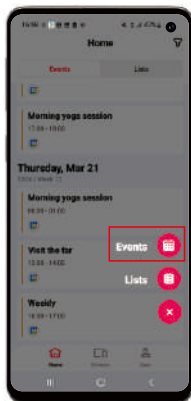
• How to create an event on a Whale Framely app ?

1. **Launch the App:** Open your "Whale Framely" App ,you have two options to create an event:

- ① Go to the "Device" module and select the calendar you want to manage.



- ② Alternatively, choose "Events" in the "Home" module.



2. **Add event(s):** Tap the "+" icon at the bottom right corner of the screen.

3. **Enter event details:** On the next page, fill in the event title, time, and any other relevant details.

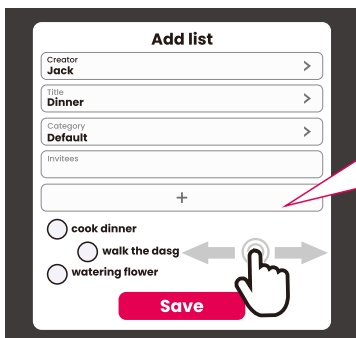
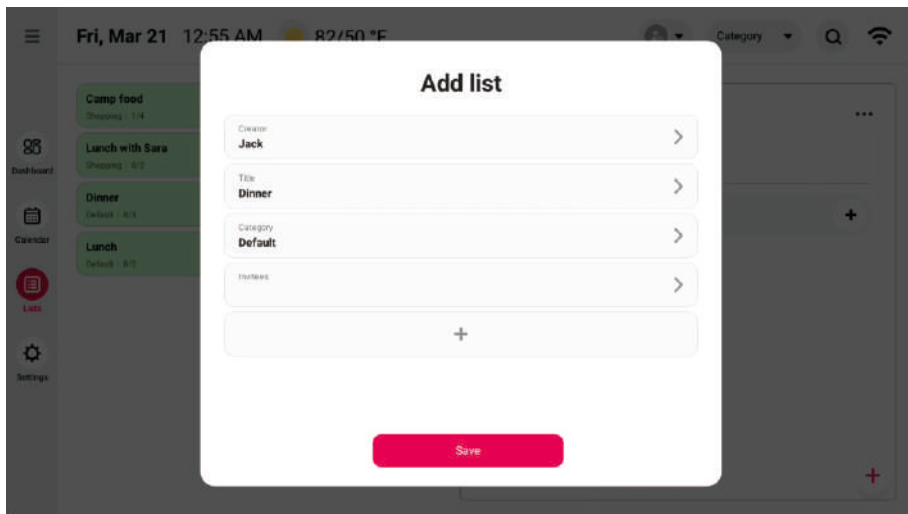
4. **Save event:** Once you've reviewed everything and confirmed it's correct, tap the "Save" button. Your event will be instantly added to the calendar.

Create list

You can create a list via your calendar or Whale Framely, and it will sync across both platforms.

• How to create an list on your digital calendar?

1. Open the list module on the device.
2. Tap the "+" icon in the bottom right corner of the screen.
3. On the next page, enter the list creator, title, and other details.
4. After reviewing the information, click "Save" to confirm. The list will sync and appear in your app.



Tips: In the create interface , if you've accidentally created a list you don't need, simply swipe left or right to delete it.

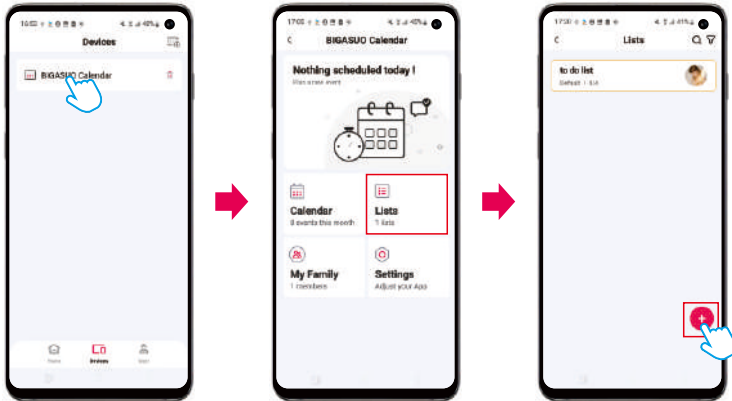
Reminder:

By default, your calendar device will display lists with completed items. To hide them, go to **Settings > Calendar**, then enable the **"Hide Completed Lists"** option.

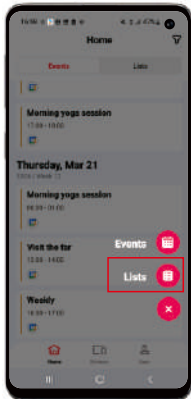
• How to create an list on Whale Framely app?

1. **Launch the App:** Open your “Whale Framely” App. here are two way to create:

① find the lists you want to manage in the “Device” module.



② Choose “Lists” in the “Home” module.

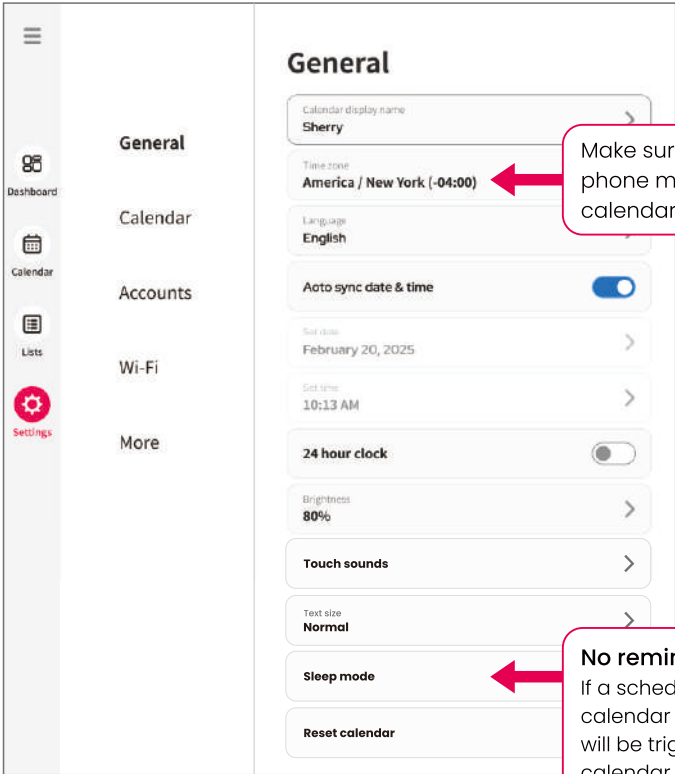


2. **Add a New List:** Tap the “+” icon in the bottom right corner of your screen to begin creating a new list.

3. **Enter List Details:** Type in the list title, choose a category label, and add your to-do tasks underneath.

4. **Save the List:** Once you’ve double-checked everything, tap “Save” and your list will automatically appear on the selected calendar.

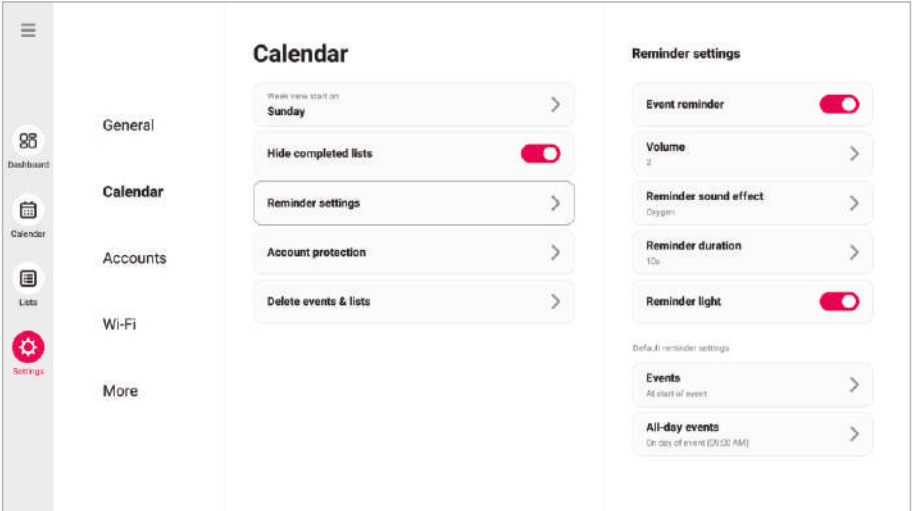
General Settings



Make sure that the time zone on your phone matches the time zone of the calendar device at all times.

No reminders during sleep mode.
If a scheduled event is set while the calendar is in sleep mode, no reminder will be triggered. However, once the calendar is activated, the reminder will be delivered immediately.

Calendar Settings



Hide completed lists	To hide the completed list, please enable this option. By default, this option is turned off.
Reminder setting	You can find all reminder-related settings on this interface.
Account Protection	Set a password to safeguard the linked account information on the calendar device and prevent accidental unbinding.
Delete events & lists	Supports bulk deletion of events and lists, saving you time efficiently.

Account Management

Invite new members

To invite a new member to manage events together, simply tap the “Invite new members” button and share the generated pairing code or QR code through your preferred method.

The screenshot shows the 'Accounts' management interface. On the left is a sidebar with navigation options: Dashboard, Calendar, Lists, and Settings. The main content area is titled 'Accounts' and lists four existing accounts: ABC, EFG, HIJ, and KLM, each with a unique color-coded dot and a right-pointing arrow. Below these accounts is a button labeled '+ Invite new members' with a right-pointing arrow. A red arrow points from a text box below to this button. To the right of the 'Accounts' list is a panel titled 'Invite new members' which displays a QR code, a pairing code '11 22 33 44 55', and a 'Refresh' button. Below the pairing code, it states: 'Code is valid until 2025-02-15 01:50:00 AM. Bind your device with QR code or pairing code via Whole Framely App. You can invite members to share their events. Each member is required to be paired only once.'

Accounts

- ABC
ABC@ibigasuo.com
- EFG
EFG@ibigasuo.com
- HIJ
HIJ@ibigasuo.com
- KLM
KLM@ibigasuo.com

Invite new members

1 QR code

2 Pairing code

11 22 33 44 55

Refresh

Code is valid until 2025-02-15 01:50:00 AM
Bind your device with QR code or pairing code via Whole Framely App. You can invite members to share their events. Each member is required to be paired only once.

You can invite a new member here. Find the pairing code or QR code on the digital calendar. Please note that the invitation code is valid for 48 hours, so ensure the binding is completed within this timeframe.

Unbind the connected calendar

You can unbind a member on “Account” module. Once unbind , that member will no longer be able to manage the events in your calendar.

The screenshot shows the 'Accounts' management interface, similar to the previous one. The 'Accounts' list and the '+ Invite new members' button are present. To the right, a panel titled 'Unbind' contains a message: 'By clicking unbind, you will disconnect from this account, and all associated content will no longer be displayed.' Below this message is a red 'Unbind' button. A text box at the bottom right explains that once the connection is removed, any events created on that calendar will no longer sync.

Accounts

- ABC
ABC@ibigasuo.com
- EFG
EFG@ibigasuo.com
- HIJ
HIJ@ibigasuo.com
- KLM
KLM@ibigasuo.com

Unbind

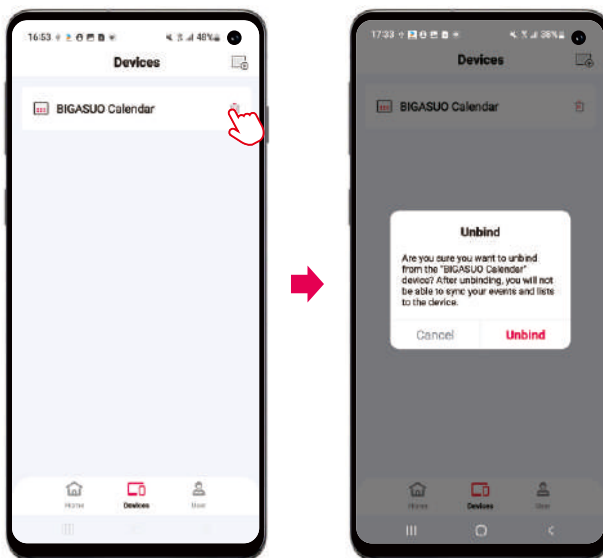
By clicking unbind, you will disconnect from this account, and all associated content will no longer be displayed.

Unbind

Please note that once the connection is removed, any events you've previously created on that calendar will no longer sync.

How to remove a connected calendar in “Whale Framely” App?

1. Tap the **Devices** modules, and you'll see a list of all connected devices.
2. Select the device you want to disconnect. Then, tap the icon next to the calendar you wish to remove.
3. Review the confirmation message, and tap **Unbind** to confirm.



FAQ

If you have any questions about how to use or set up your Digital Calendar, please contact us at help via email: support@ibigasuo.com

Unable to invite new members	The invitation code has expired. Please note that both the QR code and pairing code are valid for 48 hours. If more than 48 hours have passed, please generate a new invitation code.
How to Hide Completed Lists	go to Setting - Calendar, find the "Hide completed lists" option, and enable it.
Created a schedule but I didn't receive a reminder.	Please check if the schedule falls within the sleep mode period. If the schedule is set during sleep mode, reminders won't be triggered. However, the reminder will activate once the calendar device is awakened.
Time/date wrong after restart	Check Wi-Fi in Settings to ensure a stable connection for proper sync.
Why can't I edit iCloud-synced calendars on the calendar device?	iCloud does not support two-way sync, so edits cannot be made on the calendar device. Only Google Calendar supports two-way synchronization.
What should I do if I encounter unclear issues?	If you have any questions, feel free to contact us at support@ibigasuo.com . We're here to help!

FCC Warning Statement

FCC Statement

This equipment has been tested and found to comply with the limits for a Class B digital device, pursuant to part 15 of the FCC Rules. These limits are designed to provide reasonable protection against harmful interference in a residential installation. This equipment generates, uses and can radiate radio frequency energy and, if not installed and used in accordance with the instructions, may cause harmful interference to radio communications. However, there is no guarantee that interference will not occur in a particular installation. If this equipment does cause harmful interference to radio or television reception, which can be determined by turning the equipment off and on, the user is encouraged to try to correct the interference by one or more of the following measures:

- Reorient or relocate the receiving antenna.
- Increase the separation between the equipment and receiver.
- Connect the equipment into an outlet on a circuit different from that to which the receiver is connected.
- Consult the dealer or an experienced radio/TV technician for help.

Caution: Any changes or modifications to this device not explicitly approved by manufacturer could void your authority to operate this equipment.

This device complies with part 15 of the FCC Rules. Operation is subject to the following two conditions: (1) This device may not cause harmful interference, and (2) this device must accept any interference received, including interference that may cause undesired operation.

RF Exposure Information

This equipment complies with FCC radiation exposure limits set forth for an uncontrolled environment. This equipment should be installed and operated with minimum distance 20cm between the radiator and your body.

FCC ID:2ATFT-156C

EU Declaration of Conformity

Shenzhen Kejinming Electronic Co.,Ltd

EU Declaration of Conformity

1. Apparatus model/Product (product, type, batch or serial number):

Product name: Digital Calendar

Model No.: 156C/215C/320C

Brand name: N/A

2. Name and address of the manufacturer or his authorised representative:

Manufacturer: Shenzhen Kejinming Electronic Co.,Ltd

Address: 1~6F, Block B7, Yintian Industrial Park, Xixiang Street, Bao'an Dist, Shenzhen

3. This declaration of conformity is issued under the sole responsibility of the manufacturer

4. Object of the declaration

Refer to the section 1

5. The object of the declaration described above is in conformity with the relevant Union harmonisation legislation:

- ☒ RED Directive (2014/53/EU)
- ☒ LVD Directive (2014/35/EU)
- ☒ EMC Directive (2014/30/EU)

6. References to the relevant harmonised standards used or references to the other technical specifications in relation to which conformity is declared. References must be listed with their identification number and version and, where applicable, date of issue:

Essential requirement		Applied standard	Refer to report
Article 3.1(a)	Safety	EN IEC 62368-1:2020+A11:2020	LCSA02275007S
Article 3.1(b)	RED	ETSI EN 301 489-1 V2.2.3 (2019-11) ETSI EN 301 489-3 V2.3.2 (2023-01) ETSI EN 301 489-17 V3.3.1 (2024-09) ETSI EN 300 328 V2.2.2 (2019-07) ETSI EN 301 893 V2.1.1 (2017-05) ETSI EN 300 440 V2.2.1 (2018-07) EN IEC 62311:2020	LCSA02275005E LCSA02275005EA LCSA02275005EB LCSA02275005EC LCSA02275005ED LCSA02275005EE
Article 3.1(c)	EMC	EN 55032:2015/A1:2020 EN 55035:2017/A11:2020 EN IEC 61000-3-2: 2019/A1:2021 EN 61000-3-3:2013/A2:2021	LCSA02275006E

7. Notified body involved

None

8. Where applicable, description of accessories and components

Adapter	For AC Adapter Input: 100-240V~, 50/60Hz Adapter Output: 12V 4A, 48W
---------	---

9. Additional information

The technical documentation as required by the conformity assessment procedure is kept at the following address for a period ending at least 10 years after the last product has been manufactured at the disposal of the relevant national authorities of any Member State for inspection:

10. Signed for and on behalf of Shenzhen Kejinming Electronic Co.,Ltd

Name: Dani Lee

Signature: Dani Lee

Title: Product Manager

Date of issue: P.R.C. 02/27/2025

Email: info@kejinming.com

ISED Statement

English: This device contains licence-exempt transmitter(s)/receiver(s) that comply with Innovation, Science and Economic Development Canada's licence-exempt RSS(s). Operation is subject to the following two conditions:

- (1) This device may not cause interference.
- (2) This device must accept any interference, including interference that may cause undesired operation of the device.

The digital apparatus complies with Canadian CAN ICES-3 (B)/NMB-3(B).

French: Cet appareil contient des émetteurs/récepteurs exempts de licence qui sont conformes aux RSS exemptés de licence d'Innovation, Sciences et Développement économique Canada. L'exploitation est soumise aux deux conditions suivantes :

- (1) Cet appareil ne doit pas provoquer d'interférences.
- (2) Cet appareil doit accepter toute interférence, y compris les interférences susceptibles de provoquer un fonctionnement indésirable de l'appareil.

l'appareil numérique du ciem conforme canadien peut-3 (b) / nmb-3 (b).

This device meets the exemption from the routine evaluation limits in section 6.6 of RSS 102 and compliance with RSS 102 RF exposure, users can obtain Canadian information on RF exposure compliance.

cet appareil est conforme à l'exemption des limites d'évaluation courante dans la section 6.6 du -102 et conformité avec rss 102 de l'exposition aux rf, les utilisateurs peuvent obtenir des données canadiennes sur l'exposition aux champs rf et la conformité.

This equipment complies with Canada radiation exposure limits set forth for an uncontrolled environment.

Cet équipement est conforme aux limites d'exposition aux rayonnements du Canada établies pour un environnement non contrôlé.

This equipment should be installed and operated with minimum distance 20cm between the radiator & your body.

Cet équipement doit être installé et utilisé à une distance minimale de 20 cm entre le radiateur et votre corps.

The device for operation in the band 5150–5250 MHz is only for indoor use to reduce the potential for harmful interference to co-channel mobile satellite systems;

Les équipements fonctionnant dans la bande 5150–5250 MHz sont destinés à une utilisation intérieure uniquement afin de réduire les risques de brouillage préjudiciable pour les systèmes mobiles par satellite dans le même canal.

Digital Calendar

User Manual