

Annex 2: Integral photographs of EUT to
TEST REPORT
No.: 18-1-0225601T19c



According to:
FCC Regulations Part 15B
Sub-Part 15.109, Class B

for

Helmut Fischer GmbH

MMS Inspection SPG
Surface Profile Gauge

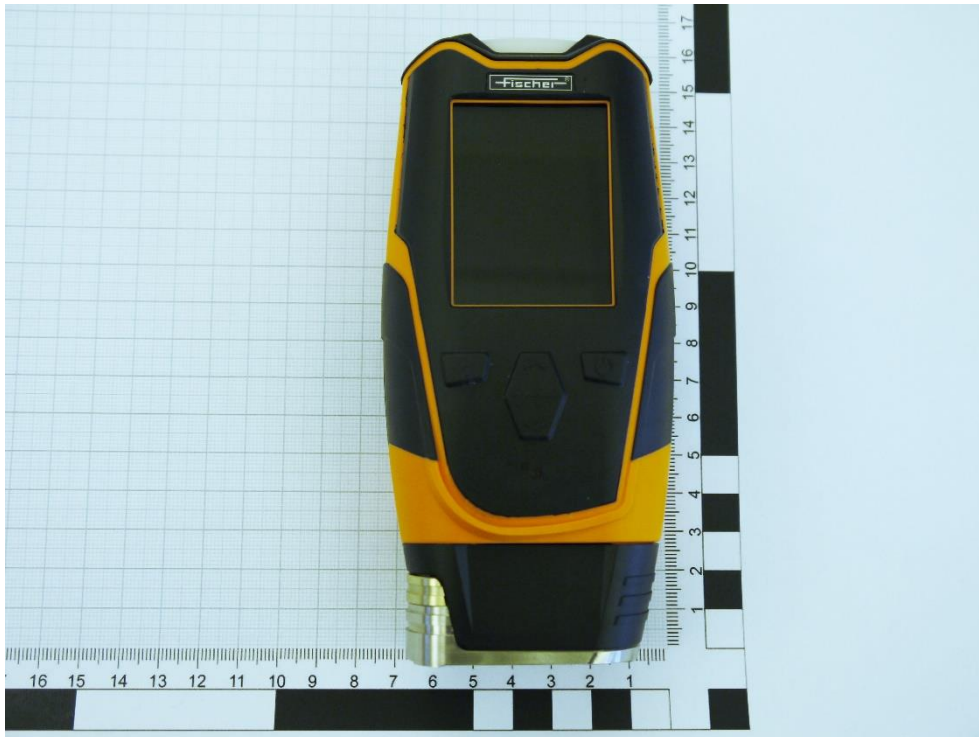
FCC-ID: 2ATFE- MMSINSPEC00

Laboratory Accreditation
<div><div>Deutsche Akkreditierungsstelle D-PL-12047-01-01 D-PL-12047-01-03 D-PL-12047-01-04</div></div>
accredited according to DIN EN ISO/IEC 17025
<p>CETECOM GmbH Laboratory Radio Communications & Electromagnetic Compatibility Im Teelbruch 116 • 45219 Essen • Germany Registered in Essen, Germany, Reg. No.: HRB Essen 8984 Tel.: + 49 (0) 20 54 / 95 19-954 • Fax: + 49 (0) 20 54 / 95 19-964 E-mail: info@cetecom.com • Internet: www.cetecom.com</p>

1. EXTERNAL PHOTOGRAPHS	3
1.1. Main device under test (EUT/DUT)	3

1. External photographs

1.1. Main device under test (EUT/DUT)



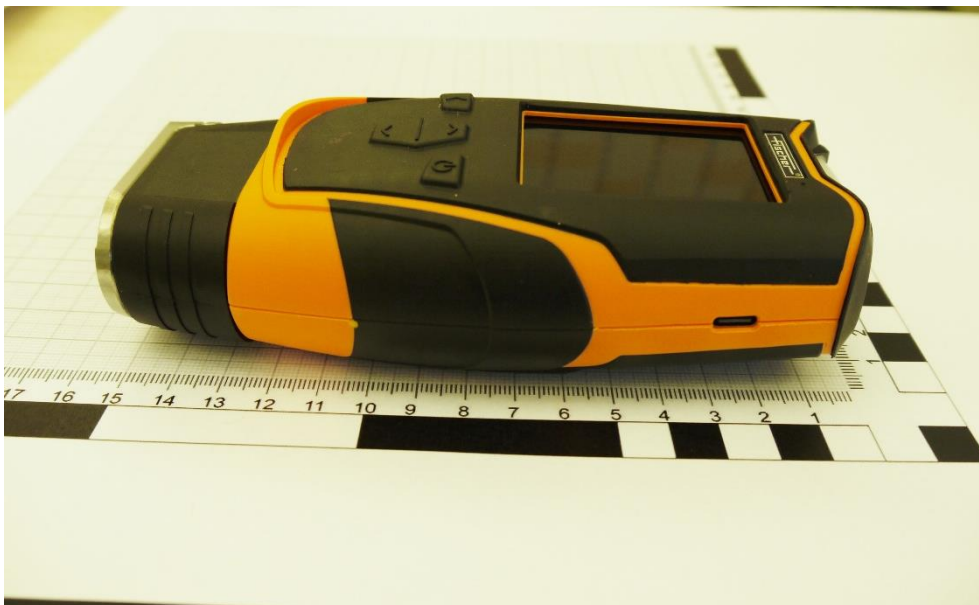
Photograph 1: Front side view



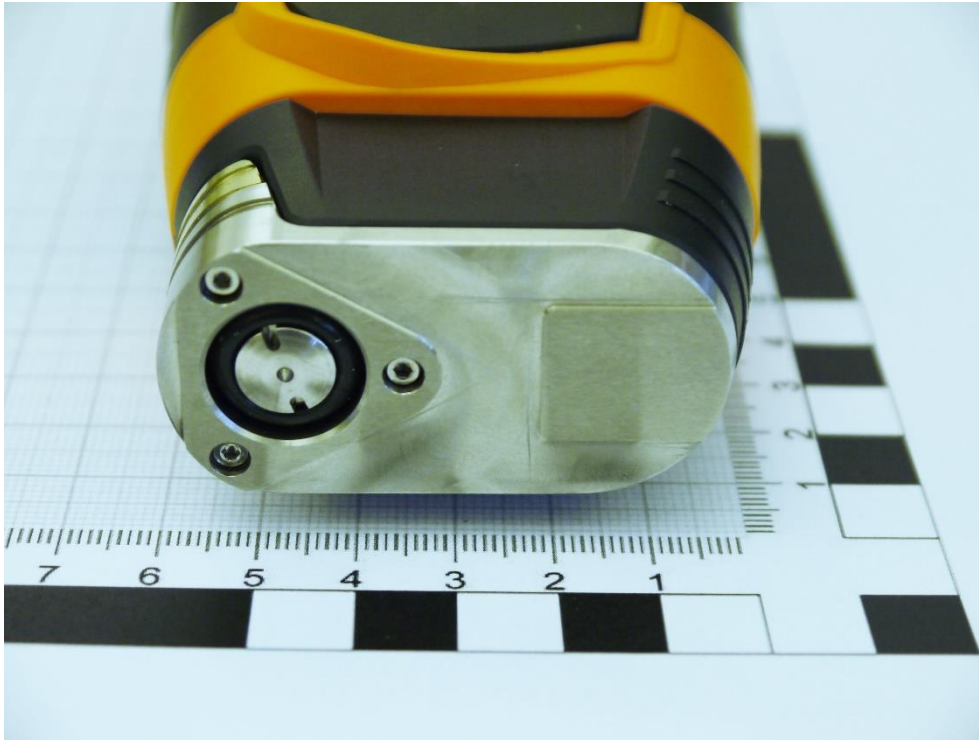
Photograph 2: Rear side view



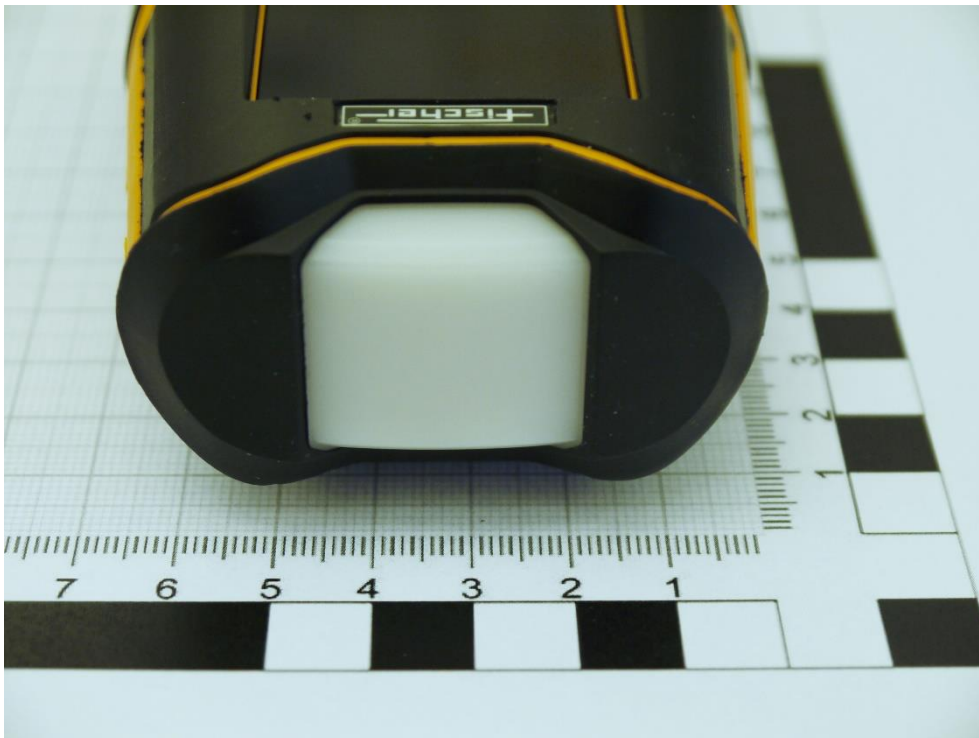
Photograph 3: Left side view



Photograph 4: Right side view



Photograph 3: Under side view



Photograph 4: Top side view