

Annex 2: Internal photographs of EUT to
TEST REPORT
No.: 18-1-0225601T19a



According to:
FCC Regulations Part 15B
Sub-Part 15.109, Class B

for

Helmut Fischer GmbH

MMS Inspection DFT
Dry Film Thickness Measurement

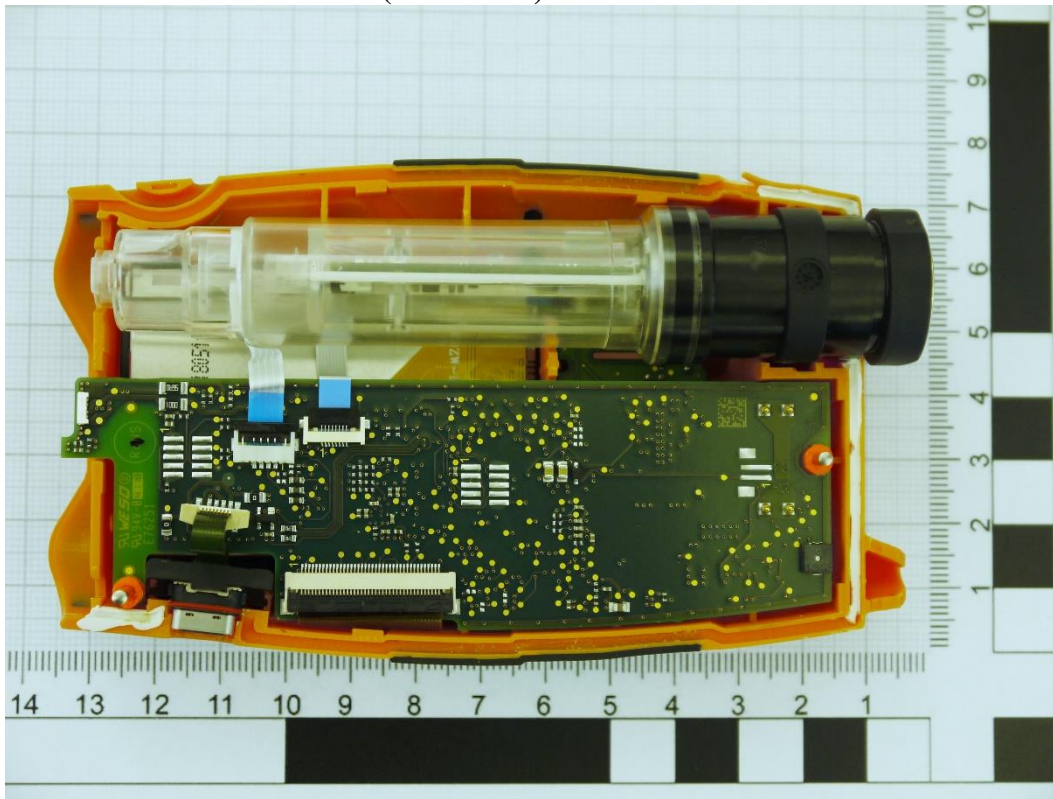
FCC-ID: 2ATFE-MMSINSPEC00

| Laboratory Accreditation |
|---|
| <div><p>Deutsche Akkreditierungsstelle D-PL-12047-01-01 D-PL-12047-01-03 D-PL-12047-01-04</p></div> |
| accredited according to DIN EN ISO/IEC 17025 |
| <p>CETECOM GmbH Laboratory Radio Communications & Electromagnetic Compatibility Im Teelbruch 116 • 45219 Essen • Germany Registered in Essen, Germany, Reg. No.: HRB Essen 8984 Tel.: + 49 (0) 20 54 / 95 19-954 • Fax: + 49 (0) 20 54 / 95 19-964 E-mail: info@cetecom.com • Internet: www.cetecom.com</p> |

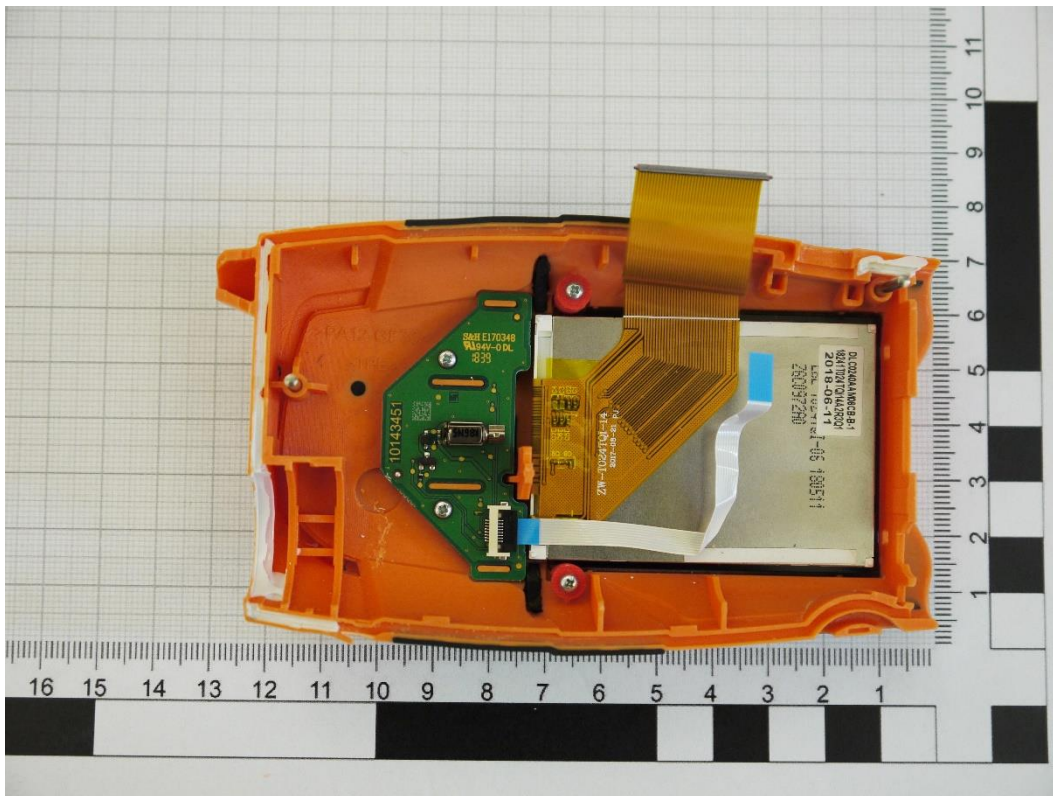
| | |
|---------------------------------------|----------|
| 1. INTERNAL PHOTOGRAPHS | 3 |
| 1.1. Main device under test (EUT/DUT) | 3 |

1. Internal photographs

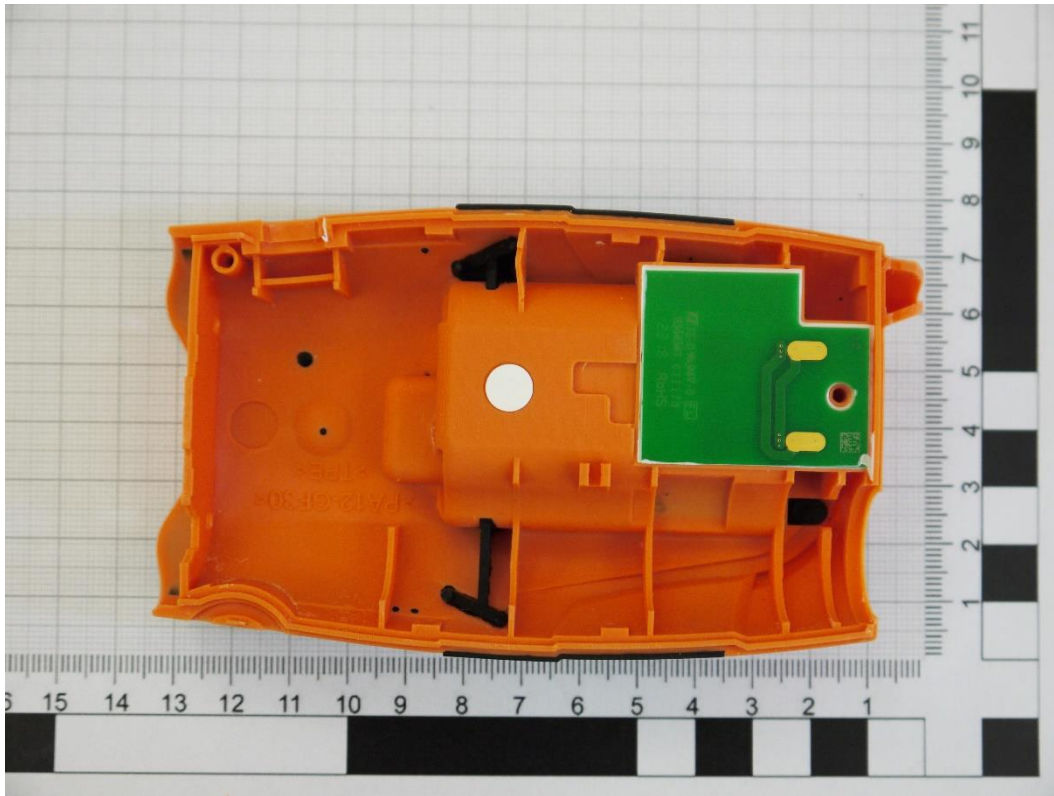
1.1. Main device under test (EUT/DUT)



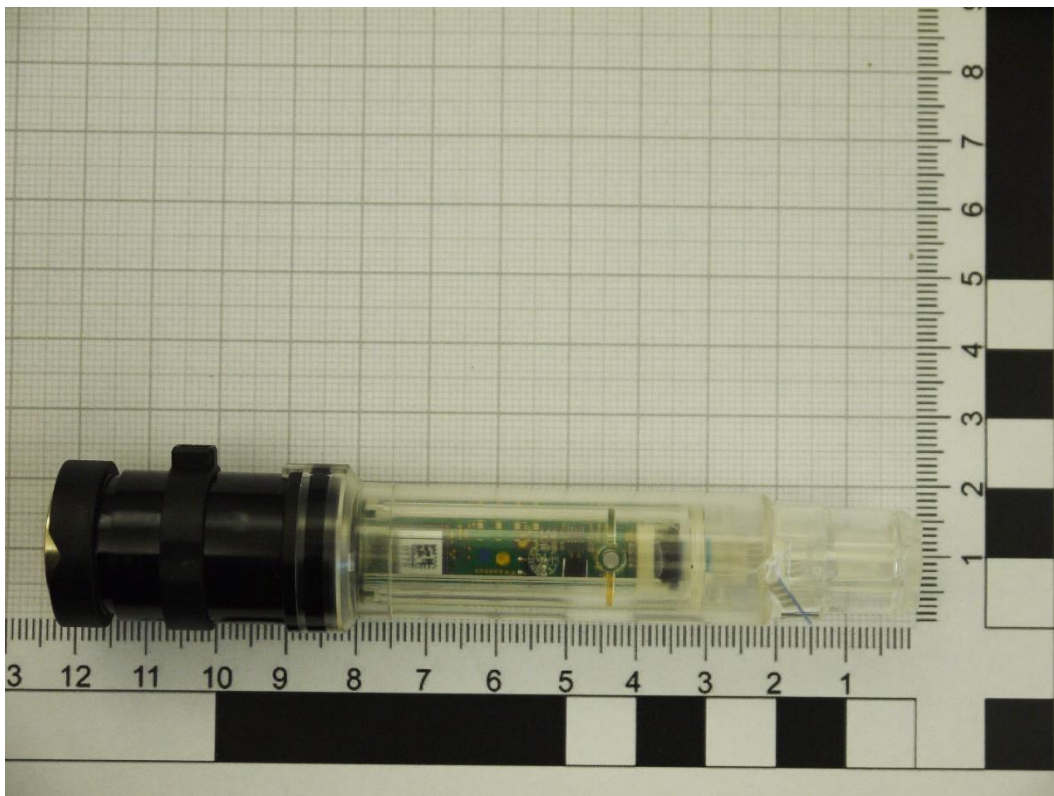
Photograph 1: SGP top PCB 1 inside view



Photograph 2: SGP top PCB 2 and Display inside view



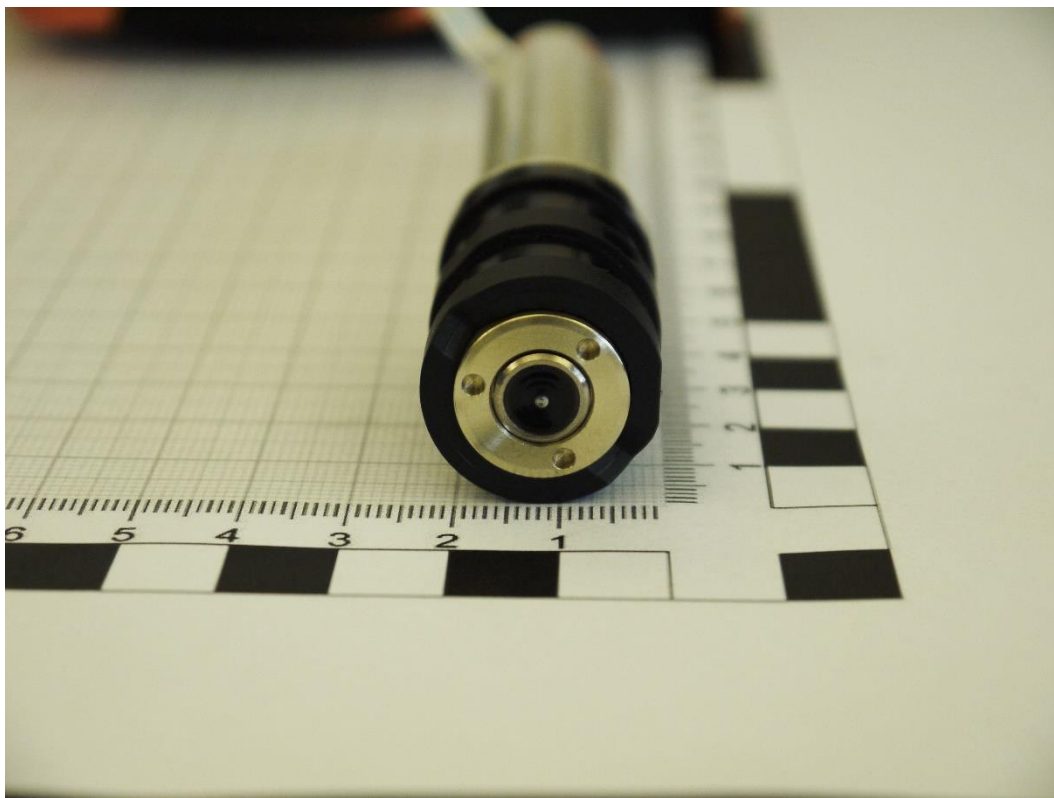
Photograph 3: SGP rear view



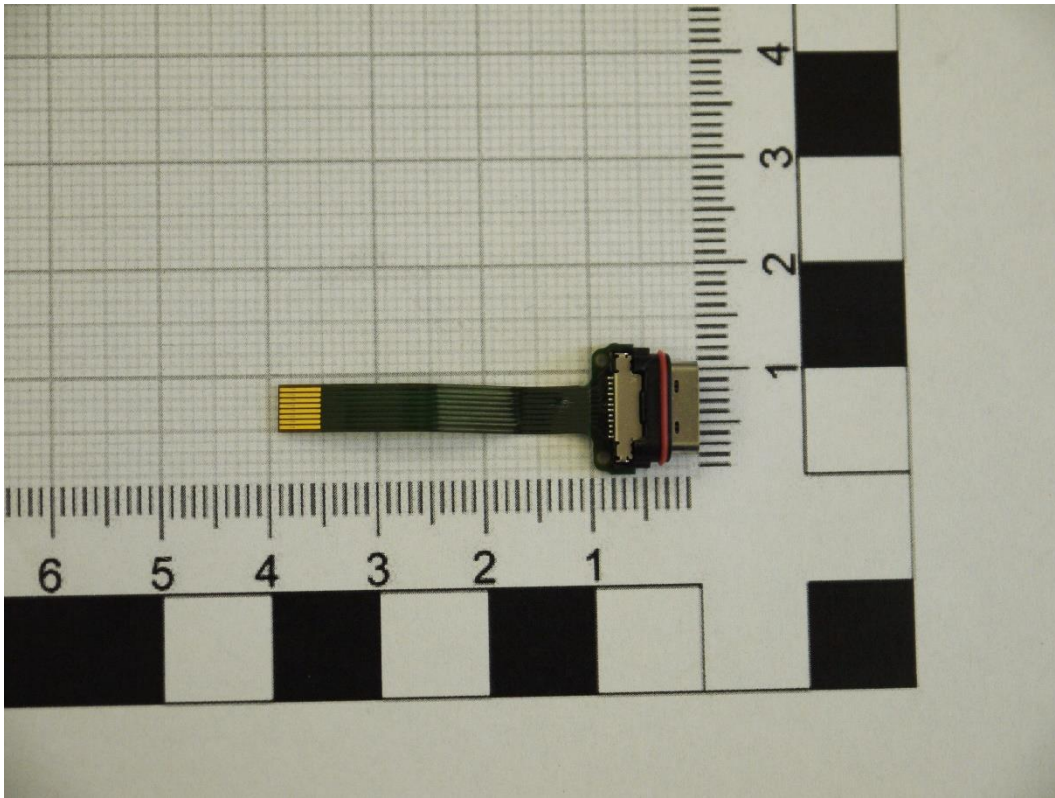
Photograph 4: Measurement unit front side



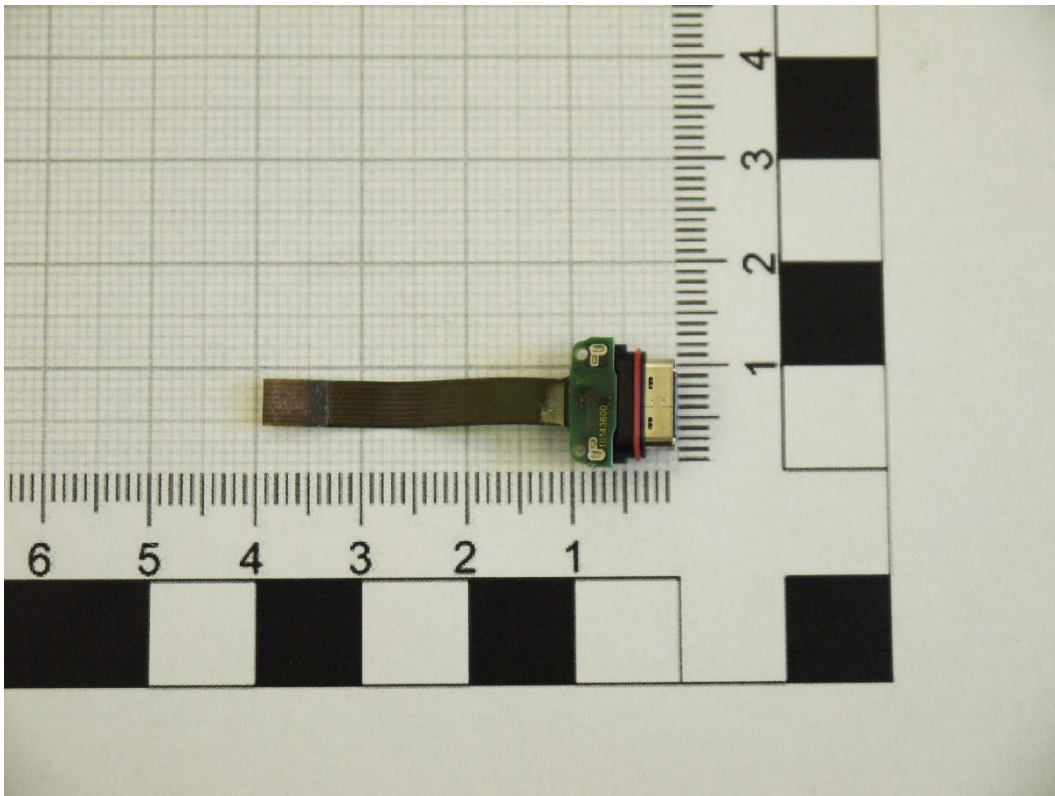
Photograph 5: Measurement unit rear side



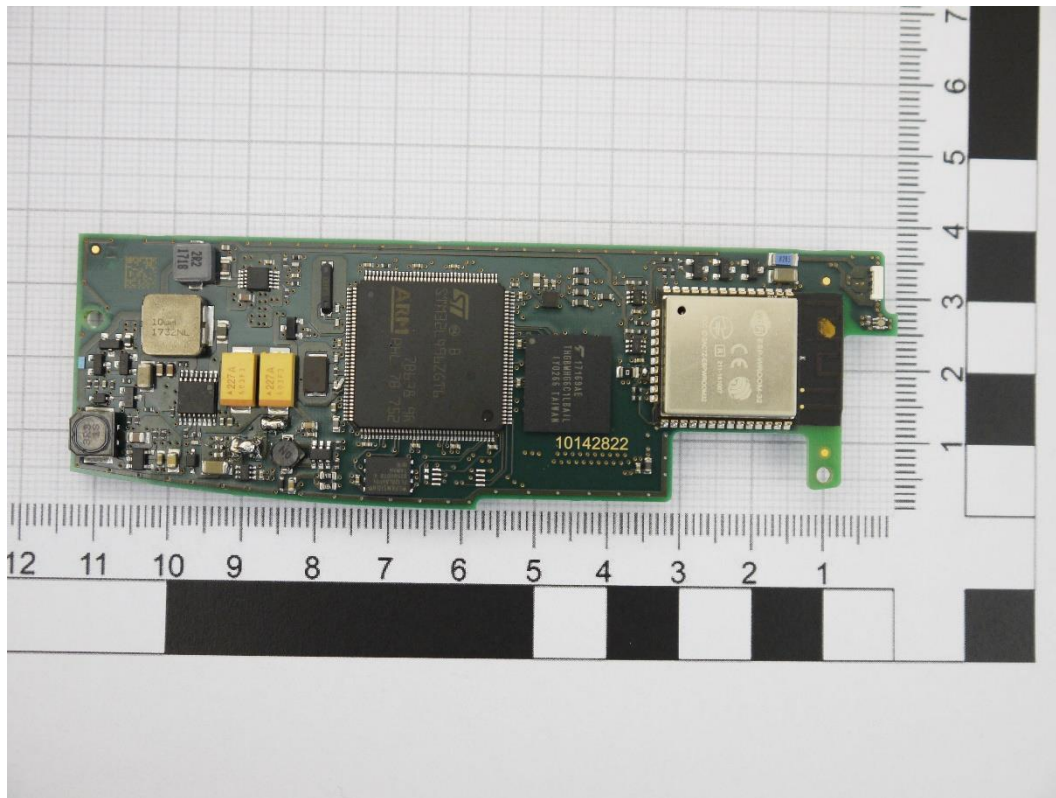
Photograph 6: Measurement Unit under side



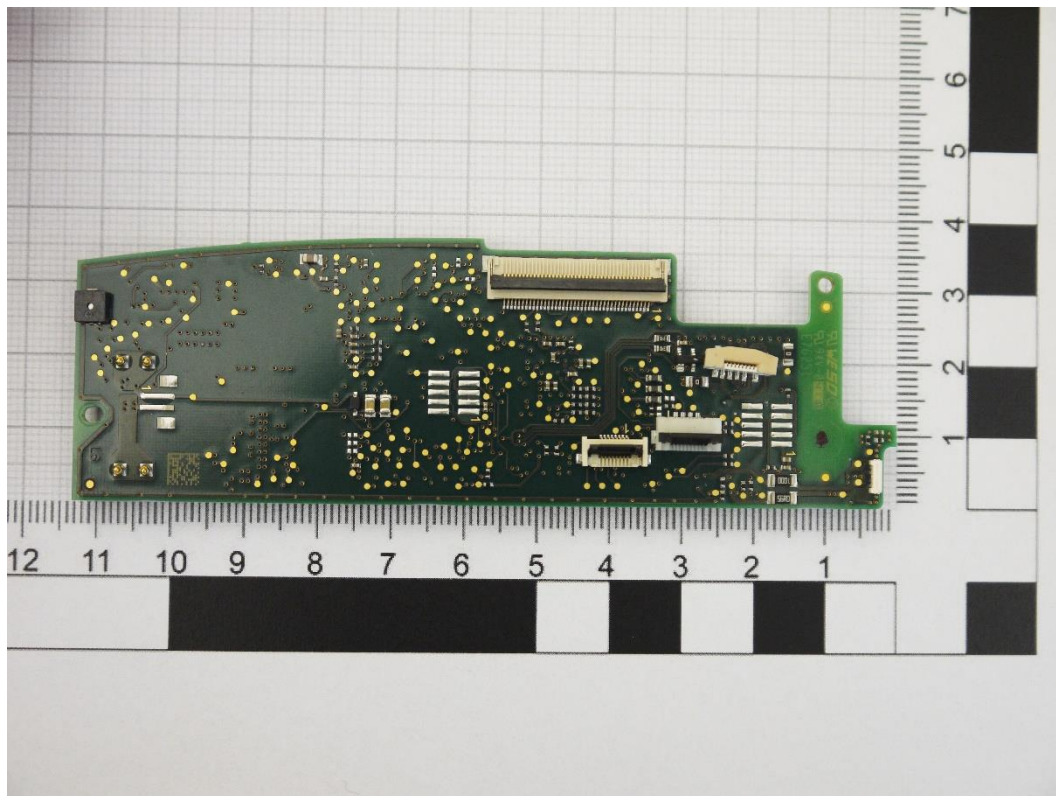
Photograph 7: USB connector front side view



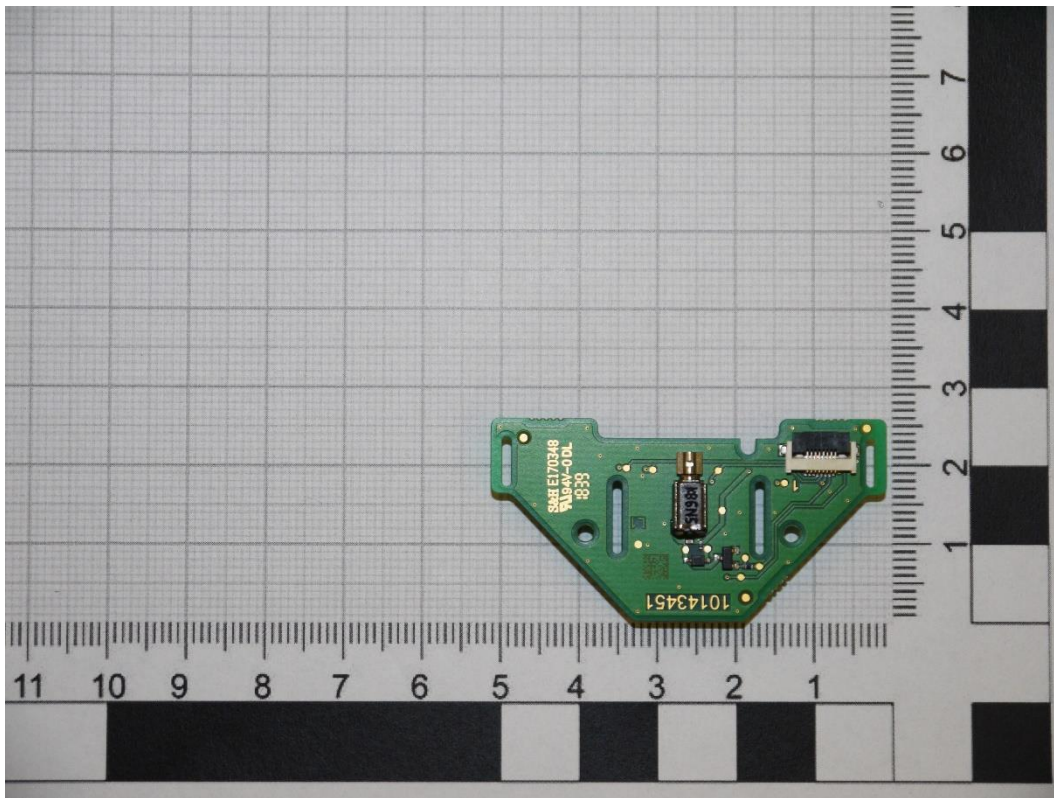
Photograph 8: USB connector rear side view



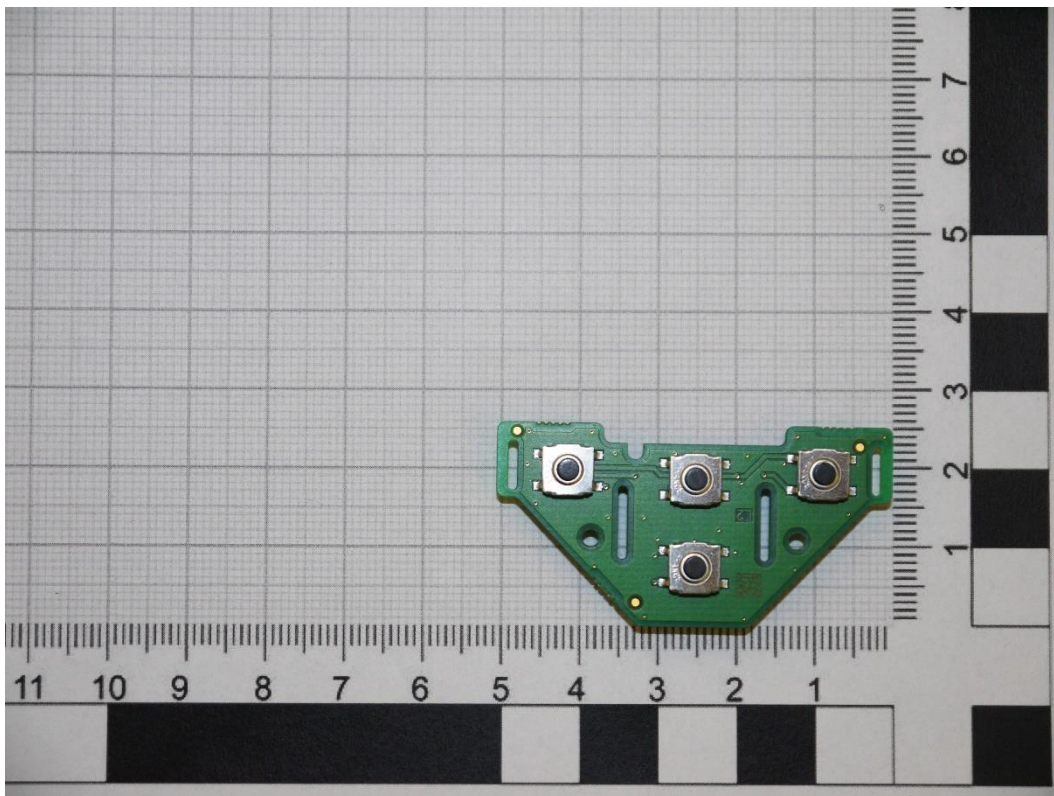
Photograph 9: PCB 1 front side view



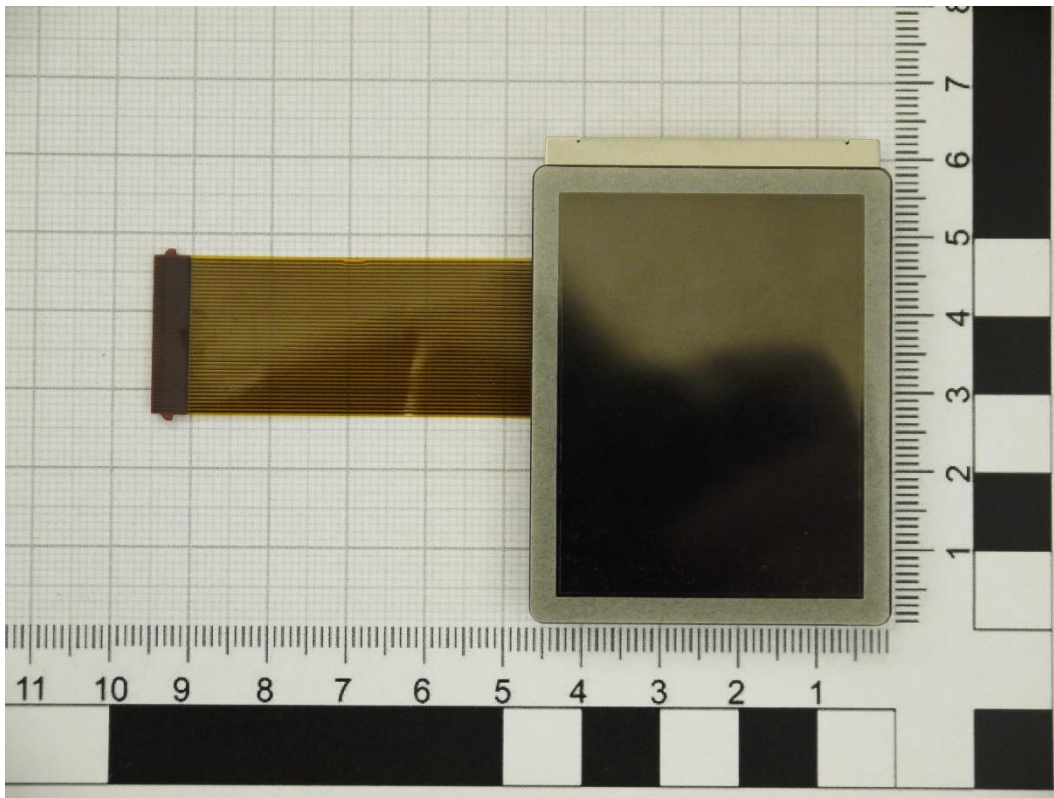
Photograph 10: PCB 1 rear side view



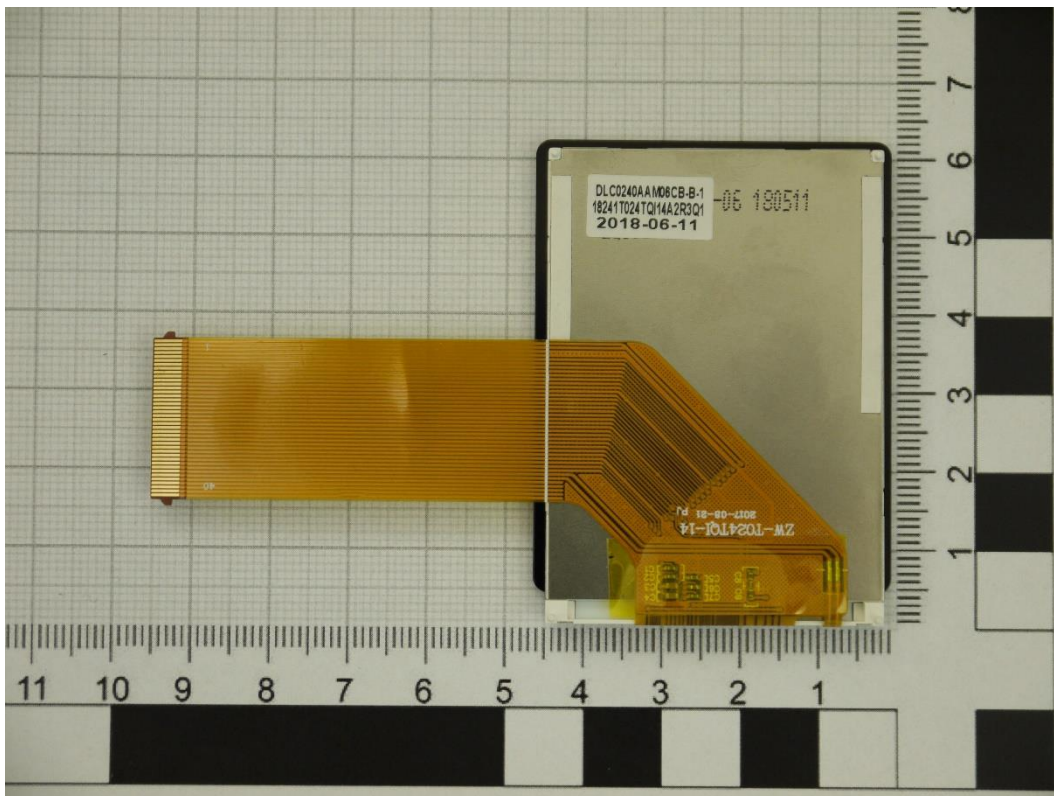
Photograph 11: PCB 2 front side view



Photograph 12: PCB 2 rear side view



Photograph 13: Display front side view



Photograph 14: Display rear side view