

ACCESS CONTROL

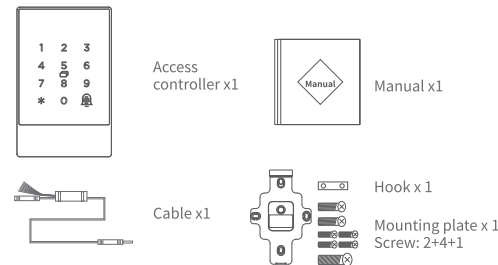
K2/K2F

Manual

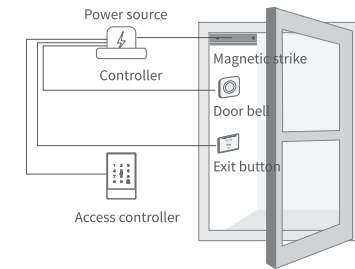
Access Control K2/K2F

Model :	K2/K2F
Dimensions :	W79mm x H125mm x T15.5mm
Material :	Aluminum frame/Tempered glass panel
Communication :	Bluetooth 4.1
Supporting systems :	Android 4.3/IOS7.0 above
Stand-by current :	≈5mA
Operating current :	≈1A
Power supply :	12V
Unlocking time:	≈1.5S
Waterproof level :	IP66(K2 only)
Card capacity:	20,000 Cards
Fingerprint capacity*:	120(K2F only)

Accessories



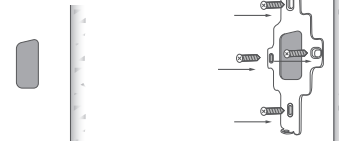
Illustration



1. Drill a hole for the cable
2. Install the mounting plate

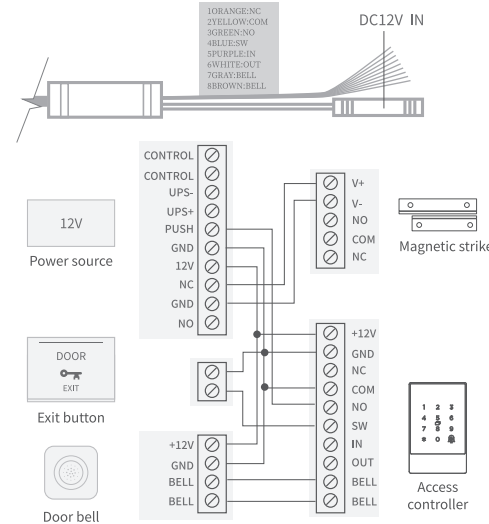
Drill a hole at appropriate position to make space for the cable to connect to the power source.

Fix the mounting plate with 4 screws.



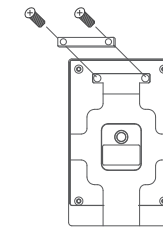
3. Wiring

Connect the cable of the access controller to power cable and other ports according to the illustration.



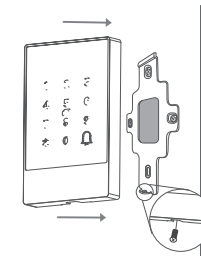
4. Install the hook

Fix the hook to the mounting plate with 2 screws.



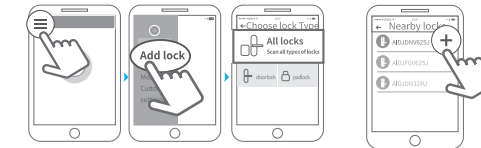
5. Install the access controller

Fit the access controller into the hook and fix it on the mounting plate with a screw in the bottom.



Pair the access controller with app

1. Tap the panel to light it up and activate the lock.
2. On voice prompt "Please add Bluetooth Administrator", activate the APP.
3. Tap the "≡" icon on the upper left corner, tap "+Add Lock", select "Door Lock".
4. Tap the device shown on the screen. Wait a few seconds till the lock gives a voice prompt/long beep, which means it is added successfully.



⚠ Notice: If fails, please shut off the APP and Bluetooth, turn them on and try the above process again.

Limited Warranty

1. For any defect in material and workmanship, the original purchaser of the product
 - 1) Can return or ask for a replacement within 7 invoice days.
 - 2) Can ask for a replacement within 15 invoice days.
 - 3) Can ask for free repair in 365 invoice days.
2. This warranty does not cover defects caused by modification, alteration, misuse or physical abuse of the product.

FCC Statement:

Any Changes or modifications not expressly approved by the party responsible for compliance could void the user's authority to operate the equipment.

This device complies with part 15 of the FCC Rules. Operation is subject to the following two conditions:

- (1) This device may not cause harmful interference, and
- (2) This device must accept any interference received, including interference that may cause undesired operation.

FCC Radiation Exposure Statement:

This equipment complies with FCC radiation exposure limits set forth for an uncontrolled environment. This equipment should be installed and operated with minimum distance 20cm between the radiator & your body.

IC RSS warning:

This device complies with Industry Canada licence-exempt RSS standard (s). Operation is subject to the following two conditions: (1) this device may not cause interference, and (2) this device must accept any interference, including interference that may cause undesired operation of the device.

Le présent appareil est conforme aux CNR d'Industrie Canada applicables aux appareils radio exempts de licence.

L'exploitation est autorisée aux deux conditions suivantes:

- (1) l'appareil ne doit pas produire de brouillage, et
- (2) l'utilisateur de l'appareil doit accepter tout brouillage radioélectrique subi, même si le brouillage est susceptible d'en compromettre le fonctionnement.

IC Radiation Exposure Statement:

This equipment complies with ICSED radiation exposure limits set forth for an uncontrolled environment. This equipment should be installed and operated with minimum distance 20cm between the radiator & your body. This transmitter must not be co-located or operating in conjunction with any other antenna or transmitter.

Le rayonnement de la classe B respecte ICSED fixaient un environnement non contrôlés. Installation et mise en œuvre de ce matériel devrait avec écarteur distance minimale entre 20 cm ton corps. Lanceurs ou ne peuvent pas coexister cette antenne ou capteurs avec d'autres.