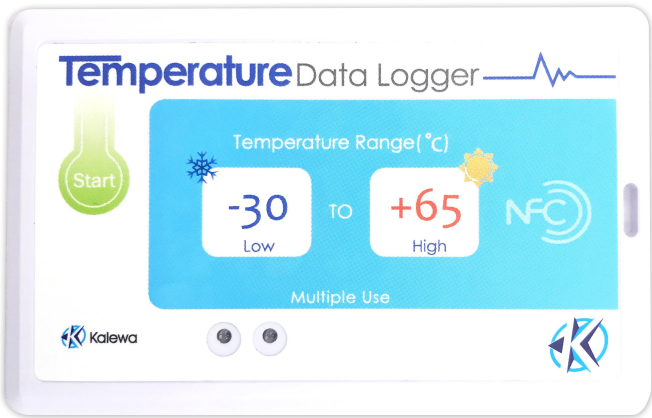


Kalewa Dual Frequency Temperature Data Logger Specification

Product Picture



Product Specification

Current Version V08.05C

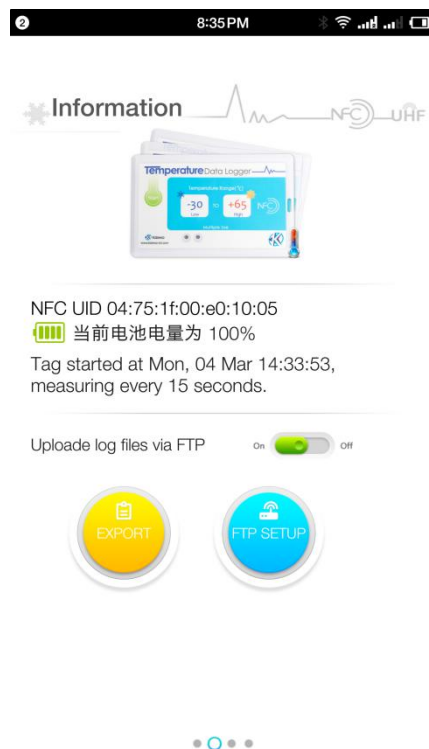
1	RFID Standard:	NFC	ISO/IEC 14443 Type A
		UHF	ISO/IEC 18000-6
2	Smart Phone Application Program:	Android	Android 5.0 above
3	Product Size:	Length: 85.6mm Width: 54mm Thickness: 4.5mm	
4	Product Weight:	18.6g / pc	
5	Product Indicator Light:	LED	Red, Green double light indication
6	Product Button:	Microswitch	Parameter setting start button
7	Battery Voltage:	CR2016 button battery	
8	Battery Capacity:	≥80mAH	

9	Shell Material:	Food grade ABS shell
10	Waterproof Grade:	IP67
11	Product Life	2 years (in continuous test mode measured every 15 minutes)
12	Temperature Measurement Range:	-30°C ~ +65°C
13	Temperature Measurement Accuracy:	± 0.3°C (within range 0°C ~ +65°C)
		± 0.5°C (within range -30°C ~ +65°C)
14	Measurement Interval can be set:	Minimum 5s, Maximum 86400s(24 hours)
15	Clock Precision:	±3% (within range -30°C ~ +65°C)
16	Data Record Storage:	At least 20,000 temperature and time data are stored in nonvolatile memory. If battery runs out, temperature and time data still saved normally
17	Data Record Mode:	"Full record" mode: record all measurement data (time and temperature)
18	Data Upload:	Support FTP server parameter setting and data uploading
19	Data Format:	Standard CSV file, PDF file
20	Language Option:	Chinese/English

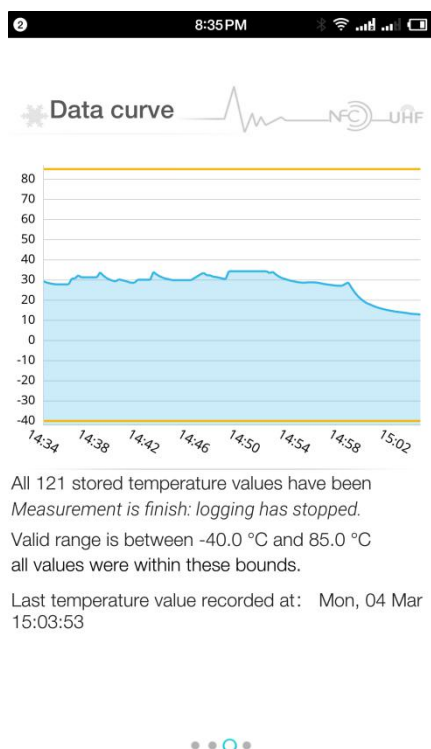
Product APP interface



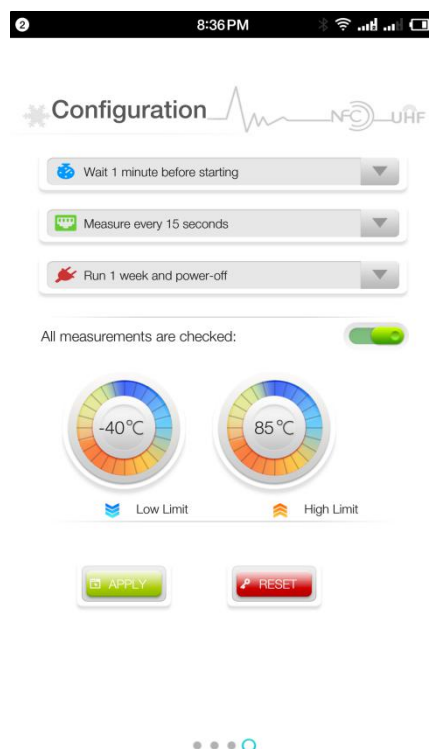
Home Interface



Information State Interface



Temperature Curve Interface



Configuration Interface

FCC Warning Statement Changes or modifications not expressly approved by the party responsible for compliance could void the user's authority to operate the equipment. This equipment has been tested and found to comply with the limits for a Class B digital device, pursuant to Part 15 of the FCC Rules. These limits are designed to provide reasonable protection against harmful interference in a residential installation. This equipment generates uses and can radiate radio frequency energy and, if not installed and used in accordance with the instructions, may cause harmful interference to radio communications. However, there is no guarantee that interference will not occur in a particular installation. If this equipment does cause harmful interference to radio or television reception, which can be determined by turning the equipment off and on, the user is encouraged to try to correct the interference by one or more of the following measures:

- Reorient or relocate the receiving antenna.
- Increase the separation between the equipment and receiver.
- Connect the equipment into an outlet on a circuit different from that to which the receiver is connected.
- Consult the dealer or an experienced radio/TV technician for help.

This device complies with part 15 of the FCC Rules. Operation is subject to the following two conditions: (1) This device may not cause harmful interference, and (2) this device must accept any interference received, including interference that may cause undesired operation.