

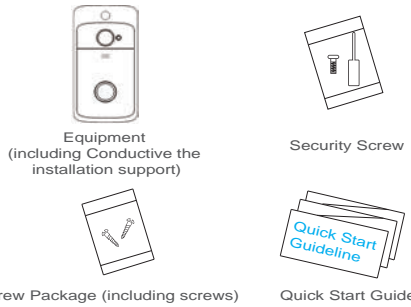
Visual wireless doorbell
M7

Quick Start Guideline

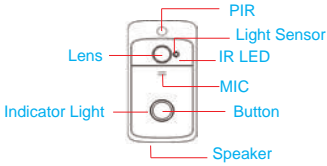
* Please read it carefully before using the product,
and safe keeping

Packing List

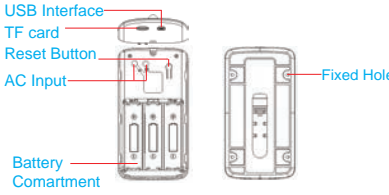
After opening the package, please make sure the doorbell (hereinafter referred to as the "Equipment") is in good condition verify parts below is complete.



Appearance Introduction



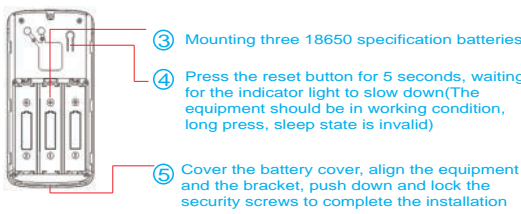
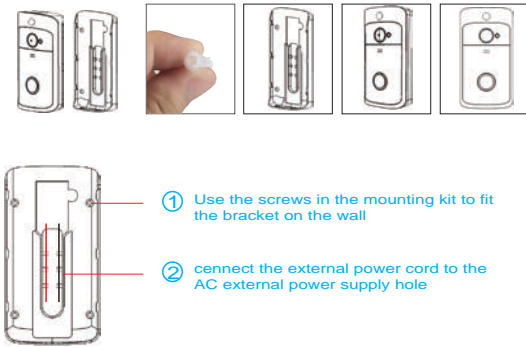
- IR LED** The ambient light is not enough, to enable the infrared light, increase the environmental brightness
- Light Sensor** Used to collect environmental brightness value, when the intensity of illumination is less than 2 Lux, enable the IR LED
- MIC** Audio capture
- Button** The doorbell button
- PIR** When human body movement in front of the equipment, the equipment could be made the notification to your mobile phone.
- Lens** Video image capture
- Indicator Light** Blinking blue: configuration status; Long red light: failed to connect wifi; Blue light is on: the device is connected successfully Red and blue light together: The device is connected to WiFi
- Speaker** Make a sound of the equipment, and voice intercom



- AC Input** Power is supplied to the equipment by installing the AC input supply hole on the mounting bracket.
- Reset Button** Equipment working status, long press 5 seconds to restore factory settings
- Battery Compartment** Mounting 18650 specification battery.
- Fixed Hole** Fit the support on the wall with the mounting screws for the mounting kit.
- AC Input Hole** The power supply of the equipment can be supplied by connecting the hole and the AC power supply on the wall
- Stuck Hole** Mounting the equipment onto the bracket
- Security Screw Hole** Mounting the security screw on the fittings to prevent the equipment from being removed
- TF card** TF card maximum support 32G

Installation Guide

As shown in the figure, take back



Setup Device

Thank you for choosing our products! Please follow the below instruction to setup and using your doorbell device.

1. Downloading and Installing the App

Open the App Store (for iOS) or the Google Play Store(for Android) on your mobile devices. Search for "Ubell" or scan the following QR Code to download and install to your device.



2. Setting up the App

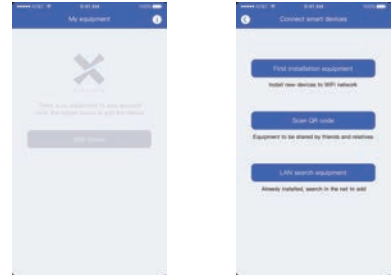
Before you begin...
> Make sure the Ubell app is installed to your device.
> Make sure that your device is connected to a 2.4GHz Wi-Fi network, NOT a 5GHz network.

Add the camera

1.) Launch the Ubell app on your device and tap Add a Camera.

Seup the Camera

2.) Select Setup Camera. Note: If you have multiple cameras, only setup one at a time.



3.) Before setup, make sure the device is in configuration --- with a voice prompt "The camera is now ready to begin pairing".



4.) If you didn't hear the voice prompt, press and hold the reset button for 5 seconds. Release after the LED indicator turned off, and the device will restart to configure automatically.



5.) The name of the Wi-Fi network will automatically be filled in, enter the Wi-Fi password. And adjust the volume of your device to a reasonable level then tap "Next". The APP will fill the corresponding password automatically if connected with the same Wi-Fi, and you don't need to fill the password again.



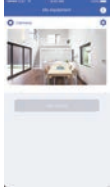
6.) The mobile device will emit sound waves, keep quiet and make sure about 30cm distance between the phone and the device, and waiting for the device to configure the network. If your camera fails to connect, reset the camera and repeat all the steps (please see the previous section, Resetting the Camera)



7.) After a successful connection, you will be prompted to create a name and password for your camera. The password must be at least 8 characters and include an uppercase letter, a lower-case letter, and a number.

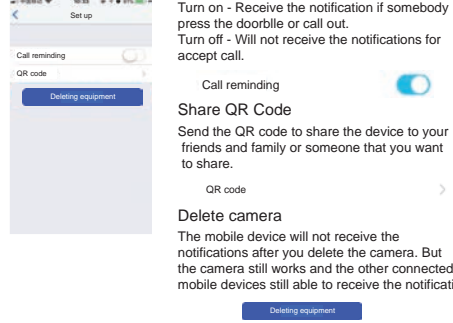


8.) Setup completed! The APP will be entered the device list interface automatically. Congratulations! The device is ready for use.



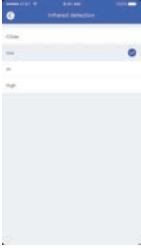
3.The Wi-Fi Doorbell Features

In the device list section, please click settings icon which at the top right corner to enter the device settings.



4.PIR Detection Instructions

The device can support the PIR detection. Tap "PIR detection" to open the submenus.

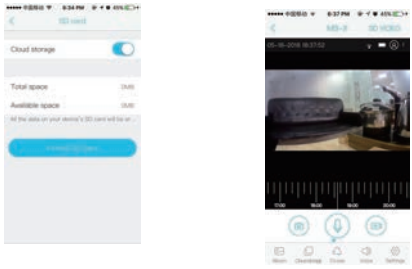


- Disabled - Close the PIR function.
- Low - The device will be able to wake up after device detects human for 7 seconds. Device start to take videos and call the mobile device at the same time.
- Medium - The device will be able to wake up after device detects human for 5 seconds. Device start to take videos and call the mobile device at the same time.
- High - In the state, the device will be able to detect if keep the state what be detected at least 1 second, and the device start to take videos and call to phones at the same time.

5.Cloud Storage

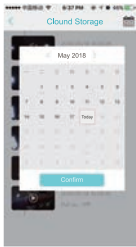
In the XSHcam APP setting menu, choose storage management, and open Cloud Storage

At the bottom of the preview page, the "Switch" button in the panorama mode becomes the "Cloud Storage" button

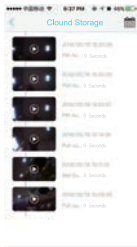


Cloud Storage Description: When the device is in sleep state, when PIR triggered or the doorbell button was pressed, the device will automatically upload 10 seconds of video to the cloud. Each device can record 20 events per day, and provide a week of loop recording space and Traffic for users

Tap the calendar icon in the upper right corner and select the date to see all the cloud videos for the selected date



Click on the event video to see the cloud video



Note: In crowded environment, it is recommended to close or set the device to low sensitivity to reduce device arousal and call times to extend battery life.

6.Note for using

- The device is powered by rechargeable lithium batteries. With fully charged, the battery life approx be six months. The mobile device APP will be prompted while the battery voltage is low. Please charge the device after received the reminder.
- Keep the camera in range of your router. Make sure to pick a place within range of your network. Thick or insulated doors can greatly reduce the strength of your Wi-Fi signal even if your router is close by, so you should try streaming video before you mount your camera.
- The device is a low power consumption intelligent products, can support remote wake up from the APP, PIR human detection, press doorbell wake up. The device will be works for 30 seconds after wake up then be in the resting state automatically and until to next waking up.

Technical Specification

Resolution	1280* 720
Field of Angle View	166°
IR LED	6*850mm
Wi-Fi	IEEE 802.11 b/ g/ n
Audio	Two-way talk with noise cancellation
Recording	Device SD Card recording(20 seconds)
Storage	Cloud storage or 8G/16G/32G TF Card
Battery	Two 18650 specification batteries
Device Wakeup	Device Button, Motion Detection, Remote Live View
Power Consumption	Three pcs 18650 lithium battery
Monitoring	Within 600 ms
Notifications	Power Consumption Standby 200 uA, Working 170 mA

- Three 18650 specification batteries, work regularly for 9 months.

Ding-dong Pairing

(Needs to be purchased separately)

Code Pairing: 1. Short press the button of Ding-dong responder, indicator light is always on

2. Press the button of doorbell to make the code successful

Reset: 1. Press the button of Ding-dong for 5 seconds.

Number of connections: 1 Ding-dong can connect with 12 Doorbells; 1 Doorbell can connect with unlimited amount of Ding-dongs.

Function Introduction

- Three 18650 specification batteries work regularly for 9 months
- Million HD pixels collocated with wide-angle lens
- Support mobile phone remote fast wakeup device within 1 second.
- 2.4G Wi-Fi connection
- High quality two-way talk with noise cancellation
- Support PIR motion detection, when someone hovers at the door, immediately alerts push notifications to the mobile phone.
- Day and night mode automatic switching, whether day or night, the image is clearly visible, for your safety and family security.

Warning:

This device complies with Part 15 of the FCC Rules. Operation is subject to the following two conditions: (1) this device may not cause harmful interference, and (2) this device must accept any interference received, including interference that may cause undesired operation.

changes or modifications not expressly approved by the party responsible for compliance could void the user's authority to operate the equipment.

NOTE: This equipment has been tested and found to comply with the limits for a Class B digital device, pursuant to Part 15 of the FCC Rules. These limits are designed to provide reasonable protection against harmful interference in a residential installation. This equipment generates, uses and can radiate radio frequency energy and, if not installed and used in accordance with the instructions, may cause harmful interference to radio communications. However, there is no guarantee that interference will not occur in a particular installation. If this equipment does cause harmful interference to radio or television reception, which can be determined by turning the equipment off and on, the user is encouraged to try to correct the interference by one or more of the following measures:

- Reorient or relocate the receiving antenna.
- Increase the separation between the equipment and receiver.
- Connect the equipment into an outlet on a circuit different from that to which the receiver is connected.
- Consult the dealer or an experienced radio/TV technician for help.

NOTE: This device and its antenna(s) must not be co-located or operation in conjunction with any other antenna or transmitter

RF Exposure Statement

To maintain compliance with FCC's RF Exposure guidelines, This equipment should be installed and operated with minimum distance of 20cm the radiator your body. This device and its antenna(s) must not be co-located or operation in conjunction with any other antenna or transmitter