

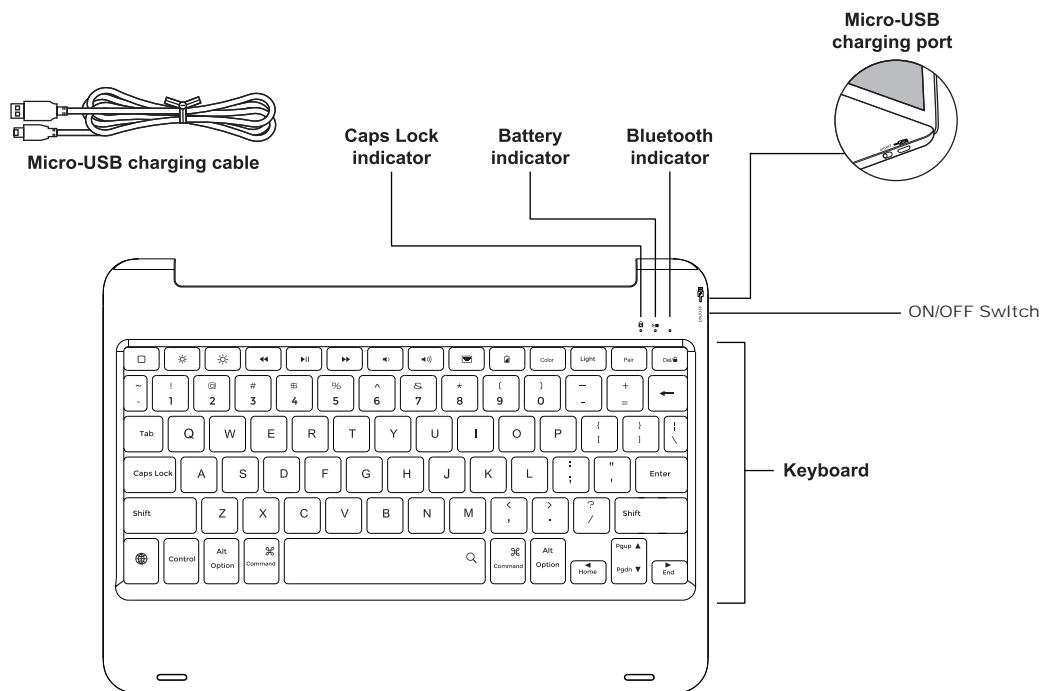
User Manual

iPad 360 Keyboard Case



For more support, please email us at support@ipadkeyboards.com
Your questions will be answered promptly.


Overview

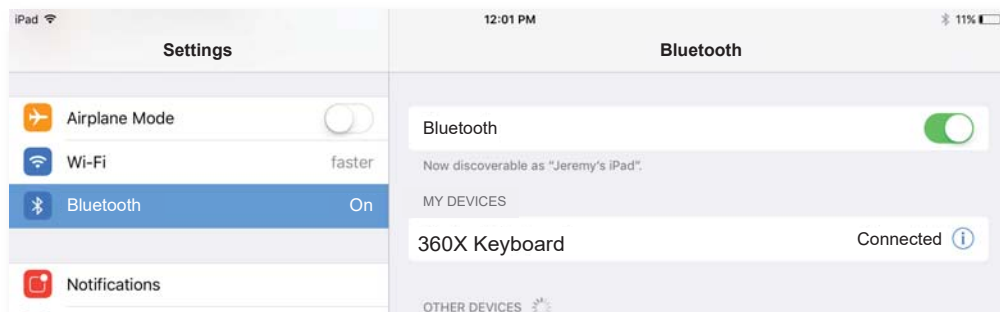


(Package contents: Bluetooth Keyboard, Micro-USB cable, user manual).

Connecting

First-time pairing:

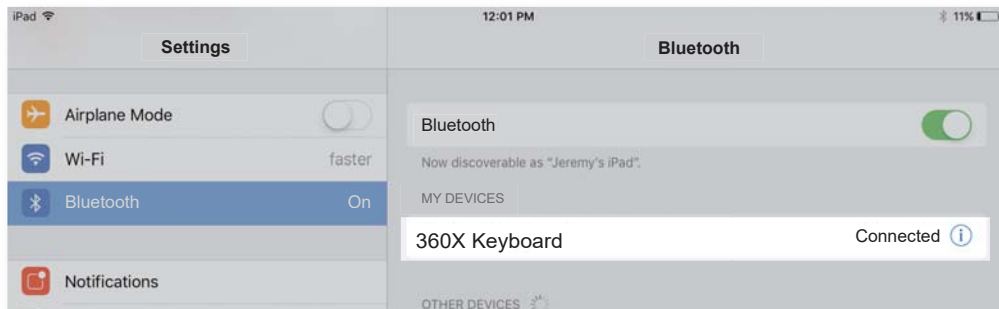
- Step 1:** Move **ON/OFF switch** to **ON**
- Step 2:** Press the '**Pair**' button for **2seconds** to connect to your iPad, (the Bluetooth indicator flashes)
- Step 3:** Toggle Bluetooth On in the Setting app  on your iPad, (the Bluetooth indicator dies, you are connected)



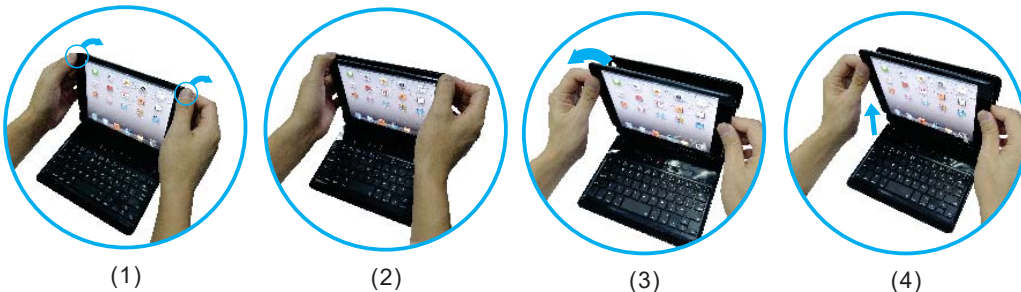
Connecting (continued)

- **Step 4:** Tap “360X Keyboard” under “DEVICES” in the Bluetooth section of the Settings app.

For future pairings, please repeat steps 1-3 (if necessary). “360X Keyboard” will appear under My Devices. Tap it to connect.

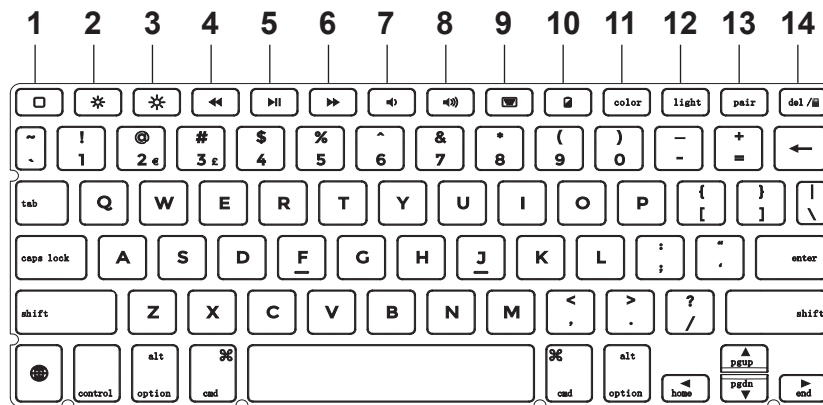


Installation and Removal



- 1) Removing back protective piece: hold iPad on both sides and use thumbs to gently push off the back cover (see photo.) Cover is held in place by two tabs.
- 2) Proceed to “peel” cover away from iPad.
- 3) Take iPad out.
- 4) Take iPad out upwards.

Function Keys



- | | |
|---------------------------------------|----------------------------|
| 1. Home (display iPad's home screen) | 8. Volume up |
| 2. Decrease Brightness | 9. Virtual Keyboard |
| 3. Increase Brightness | 10. Battery Status Check |
| 4. Backward | 11. Change backlight color |
| 5. Play/Pause | 12. Turn on backlight |
| 6. Forward | 13. Pair |
| 7. Volume down | 14. Lock/Unlock iPad + |

Some common shortcuts with Command Key:

Cut + Paste + Select all + Copy +

Product Specs

- Operating distance: 10 meters (33 feet)
- Modulation System: GFSK
- Working voltage: 3.0-4.2V
- Working current: 0.88-3.85mA
- Sleeping current: < 125μA
- Charging current: 500-800mA
- Standby time: 30 days
- Continuous working time without backlight: 60 hours.
- Charging time: < 2 hours
- Battery's capacity: 500mAh
- Battery's life span: 3 years
- Key's life span: > 5 million strokes
- Operating temperature: -10 ±55°C

Maintenance:

Please preserve the keyboard under normal temperature and recharge under normal voltage.



Rotation



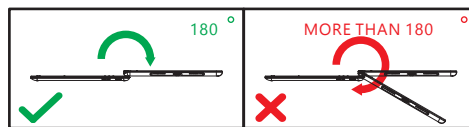
Twist to rotate 360°



Open up to 180°

(Twist to use in 360° Tablet mode and Video mode as below)

WARNING:



Usage



Laptop mode

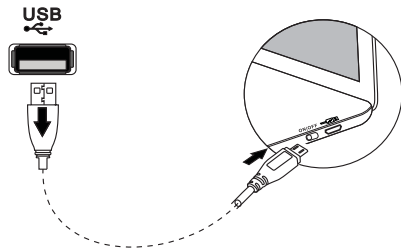


Video Mode



Tablet mode

Charging



iPad adapters

1. Switch on the keyboard.
 - a. Note: If battery light is flashing, please charge the keyboard.
2. Plug in the charging cable to the keyboard, and then to the power adapter
 - a. Battery indicator turns red when keyboard is charging
 - b. Battery indicator turns blue when charging is complete
3. To see the current battery status, press the the battery key. The status will be shown with the three LED indicator lights
 - a. Three blue lights: 70-100%
 - b. Two blue lights: 40-70%
 - c. One blue light: 10-40%
 - d. Flashing red light:<10%

Contact Us

If you have any issues or questions, let us know ASAP! We would love to get you taken care of and happy right away! All units come with a full 12 month warranty, so you can relax and take comfort in your purchase.

For the fastest & friendliest support, contact us (not Amazon) via one of the contact methods below. Our email support is open 10/7/365.

- 1.Email:support@ipadkeyboards.com
- 2.Phone:832-303-5080
- 3.Support link:<https://ipadkeyboards.com>

Troubleshooting next page 

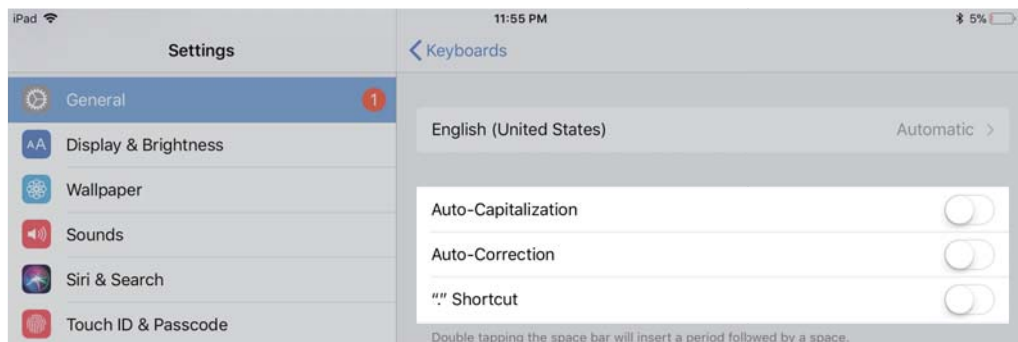
Troubleshooting

If the keyboard is not working correctly, please check the following:

- 1) The Bluetooth function on the iPad (or other Bluetooth devices) is enabled.
- 2) The Bluetooth keyboard is within 33 feet.
- 3) The Bluetooth keyboard is charged.

If you have unwanted auto-correction or punctuation, please try to change Wireless keyboard's setting on your iPad:

- 4) **Connect your iPad to Wireless keyboard.**
- 5) Go to iPad Settings app > General > Keyboard > **Hardware Keyboard.**
- 6) Toggle **OFF** Auto-Capitalization, Auto-Correction, and "." Shortcut.
(please refer to the figure below)



1. Make sure the keyboard is on (the battery indicator is illuminated).
2. Ensure the battery has enough power.
3. Make sure that Bluetooth in your device (eg iPad, tablet, PC) is on.
4. Press the key 'Pair', check the Bluetooth status.
5. Ensure keyboard has already paired via Bluetooth.

If fail in connect with bluetooth, please try the following steps:

- Delete bluetooth device on the iPad,
- Switch off the Bluetooth function on the iPad
- Reboot the iPad
- Switch on Bluetooth on the iPad
- Switch the keyboard off and on
- Repeat the step on page 2 and 3 to pair the keyboard

Warning

NOTE: This equipment has been tested and found to comply with the limits for a Class B digital device, pursuant to part 15 of the FCC Rules. These limits are designed to provide reasonable protection against harmful interference in a residential installation. This equipment generates uses and can radiate radio frequency energy and, if not installed and used in accordance with the instructions, may cause harmful interference to radio communications. However, there is no guarantee that interference will not occur in a particular installation. If this equipment does cause harmful interference to radio or television reception, which can be determined by turning the equipment off and on, the user is encouraged to try to correct the interference by one or more of the following measures:

- **Reorient or relocate the receiving antenna.**
- **Increase the separation between the equipment and receiver.**
- **Connect the equipment into an outlet on a circuit different from that to which the receiver is connected.**
- **Consult the dealer or an experienced radio/TV technician for help**

Changes or modifications not expressly approved by the party responsible for compliance could void the user's authority to operate the equipment. This device complies with Part 15 of the FCC Rules. Operation is subject to the following two conditions:

- (1) this device may not cause harmful interference, and
- (2) this device must accept any interference received, including interference that may cause undesired operation.

