



Garage Door Control System User Manual

(For Residential Use Only)

FCC statement

M2Micro		
Product name	Door controller	Door sensor
Product model	D3011A	D3011B
FCC ID	2ATDG-D3011A	2ATDG-D3011B

This device complies with part 15 of the FCC Rules. Operation is subject to the condition that this device does not cause harmful interference 1) this device may not cause harmful interference, and 2) this device must accept any interference received, including interference that may cause undesired operation.

Changes or modifications not expressly approved by the party responsible for compliance could void the user's authority to operate the equipment.

NOTE: This equipment has been tested and found to comply with the limits for a Class B digital device, pursuant to Part 15 of the FCC Rules. These limits are designed to provide reasonable protection against harmful interference in a residential installation. This equipment generates, uses and can radiate radio frequency energy and, if not installed and used in accordance with the instructions, may cause harmful interference to radio communications. However, there is no guarantee that interference will not occur in a particular installation.

If this equipment does cause harmful interference to radio or television reception, which can be determined by turning the equipment off and on, the user is encouraged to try to correct the interference by one or more of the following measures:

- Reorient or relocate the receiving antenna.
- Increase the separation between the equipment and receiver.
- Connect the equipment into an outlet on a circuit different from that to which the receiver is connected.
- Consult the dealer or an experienced radio/TV technician for help.

To maintain compliance with FCC's RF Exposure guidelines, This equipment should be installed and operated with minimum distance between 20cm the radiator your body: Use only the supplied antenna.

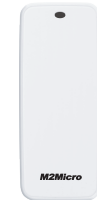
Summary

The Garage Door Control System is independently designed and manufactured by M2Micro Co., Ltd. This system is powered by our advanced AI solutions and Internet-of-Things (IoT) technique. The garage door control system consists of a door controller and a door sensor. It adds remote control to your original garage door switch, allows real-time monitoring of the garage door status, and sends alarms to your mobile devices for security.

Appearance design



Door controller



Door sensor

Product functions



Remote switch



Gate status



Alarm push



Smart phone control



QR code sharing



Easy to install

Technical SPECS

Door controller

Product model: D3011A
Operating temperature: 13-158°F
Rated power: 10W
Operating voltage: 5V DC
Dimensions: 120L*120W*30H mm
Wireless connection:
Wi-Fi IEEE802.11b/g/n 2.4GHz

Door sensor

Product model: D3011B
Operating temperature: 13-158°F
Battery type: AAA
Dimensions: 40.25L*95W*20.50H mm
Frequency: 2.4GHz

Operating instructions

1. App Download

Scan the QR code below to download the mobile App.



2. Account login

Connect your device to Internet through Wi-Fi. Run the App to log in to your M2Micro account.

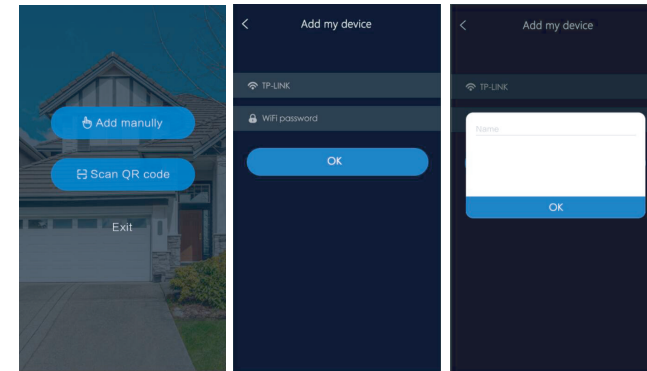
For first time user, sign up a new account before login.

3. Set-up door controller

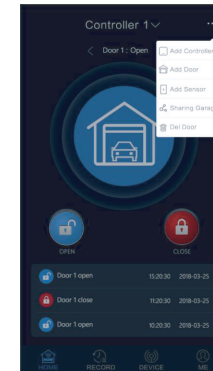
Plug the door controller into the power outlet (5V).

For first time set-up, click the **Add Manually** button in your App, choose your Wi-Fi to connect, then click **OK**.

In the pop-up dialog box, set the name of your garage door control system. Click **OK** to confirm the set-up.



If it is not the first time to setup, , click " ..." on the upper right corner of the homepage in the App, then select **Add Controller** to set-up.

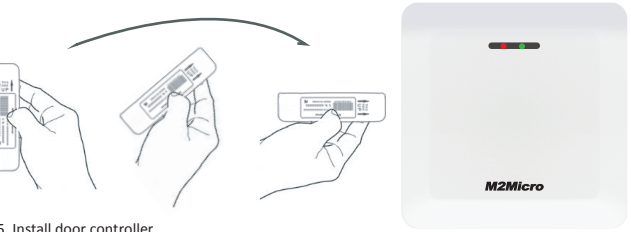
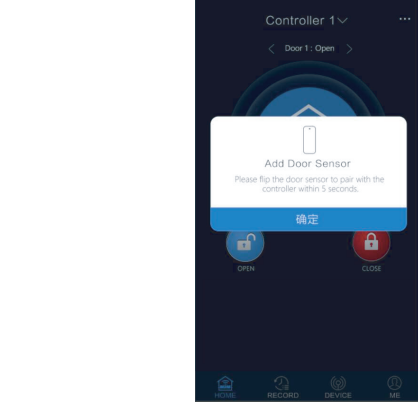


4. Set-up door sensor

Set-up the door sensor per to the instructions in the App.

Flip the sensor 90° and hold its trigger for 5 seconds. (See the picture below)

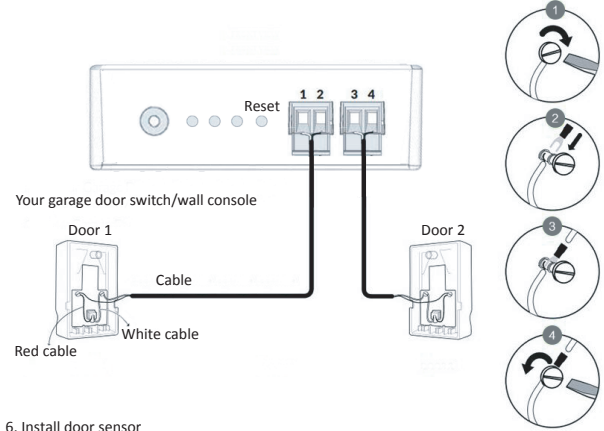
An message "Add garage door sensor successfully " will pop up when the door sensor has been set-up successfully and working normally.



5. Install door controller

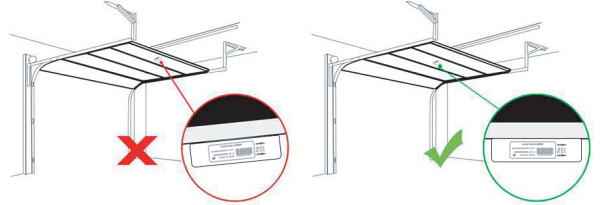
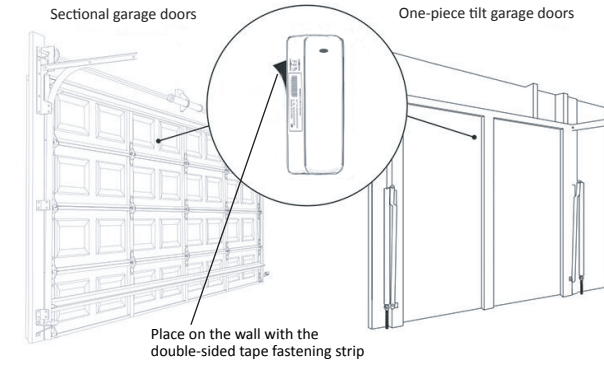
Before set-up the system, the controller should be restored to the factory settings.

Connect the door controller to the original wall switch of the garage door. (see the picture below)



6. Install door sensor

Place the door sensor in the upper portion of the garage door with the "THIS SIDE UP" label facing to the ceiling (arrows pointing up) and the battery compartment facing the garage door. Assure the sensor is in the horizontal position when the garage door is open.



Reset to factory default

To reset the controller, press and hold the **Reset** button on the device until you hear a beep sound, and see indicators flashing green.

Attentions

1. Please use the product with the designed voltage. An improper voltage may damage the product and cause injury.
2. Please do not disassemble products .
3. Do not use the product in extreme temperatures.
4. Radio signals in the installation area may interfere signal transmissions of the product.

Warranty

M2Micro offer a one-year limited warranty to this product. Your door controller & door sensor are warranted against defects in materials and workmanship for a period of one year from the date of the purchase.

If a defect arises during the warranty period, we will either 1) replace the defective product with a new and undefective one with your consent, or 2) refund the original purchase price. This warranty excludes damage resulting from abuse, accident, modifications, unauthorized repairs or damage that are not related to defects in materials and workmanship.

More information

This is a quick guide of the Garage Door Control System product.

If you would like to get more information or help, please download a detailed user manual from our website (www.m2micro.com), or contact our technical support (Tel. : +86-752-3888028, Email: TechSupport@m2micro.com).

Statement

The copyright of this manual belongs to M2Micro Co., Ltd. all rights reserved.

Without authorized written permission issued by M2Micro, any organization or individual cannot change, imitate, copy or translatedesign and content of this manual.

Applying this manual in any form, including but not limited to formats of hard copies, electronic copies, photocopies, or audio and video recordings, to any commercial or profitable usage is prohibited.

What's in the box

