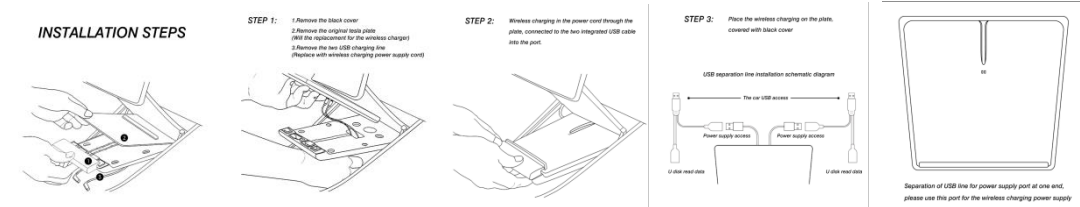


Model: TSL-A03

## Car Fast Wireless Charger

### User Manual

#### Wireless Charging Connection Flow



#### Specifications

Input: 5V/2A、9V/2A

Output: 5W-7.5W-10W

Receiving distance: 2-8mm

Conversion: ≤83%

Size: 195mm\*175mm\*20mm

NW: 425g

#### Mobile phone charging right way

1. After the power is turned on, the yellow light of the charging board is turned on for 2 seconds, and the charging board enters the standby state.
2. LED Lights Color:  
**Orange**, On: Charging, Off: No Charging and No Connecting, Flashing:Error, e.g. Detects Foreign Object(s), etc.  
**Green**, On:Fully Charged

#### Compatibility

Apple phone:iphone Xs/MAX/XR/X/8/8 Plus

Samsung phone:Galaxy Note 10/9/8/7/5 S9/S9 Plus/S8/S8 Plus/S7/S7 edge/S6 edge Plus

Anyone of the qi protocol phone can support

#### Notes

Please pay attention to the following issues,otherwise it may cause abnormal charging,high charging temperature,intermittent charging,or even ont charging.

1. Please put the phone at the center of the charger area.
2. Use mobile power supply with QC2.0/3.0 USB port to charge for fast charging (9V/1.67A), and use on-board USB to charge for normal charging (5V/2A).
3. The charging distance is 2-8mm,please don't wear protective case which is over 6mm thick.
4. No metal or magnetic objects around 5cm of the back center of the phone during charging.
5. The lower the temperature,the faster the charge speed.The charging speed is faster in winter than in summer.
6. Please don't charge in high temperature and humid environments to avoid damage to circuit.
7. Put it at the place that children can't reach to avoid unnecessary accidents.

The involved images are sketch maps, the final product as per the material subjects

#### FCC Warning

This device complies with part 15 of the FCC Rules. Operation is subject to the following two conditions: (1) This device may not cause harmful interference, and (2) this device must accept any interference received, including interference that may cause undesired operation. Any changes or modifications not expressly approved by the party responsible for compliance could void the user's authority to operate the equipment. This equipment has been tested and found to comply with the limits for a Class B digital device, pursuant to part 15 of the FCC Rules. These limits are designed to provide reasonable protection against harmful interference in a residential installation. This equipment generates and can radiate radio frequency energy and, if not installed and used in accordance with the instructions, may cause harmful interference to radio communications. However, there is no guarantee that interference will not occur in a particular installation. If this equipment does cause harmful interference to radio or television reception, which can be determined by turning the equipment off and on, the user is encouraged to try to correct the interference by one or more of the following measures:

- Reorient or relocate the receiving antenna.
- Increase the separation between the equipment and receiver.
- Connect the equipment into an outlet on a circuit different from that to which the receiver is connected.
- Consult the dealer or an experienced radio/TV technician for help. The device has been evaluated to meet general RF exposure requirements. The device can be used in portable exposure conditions without restriction.