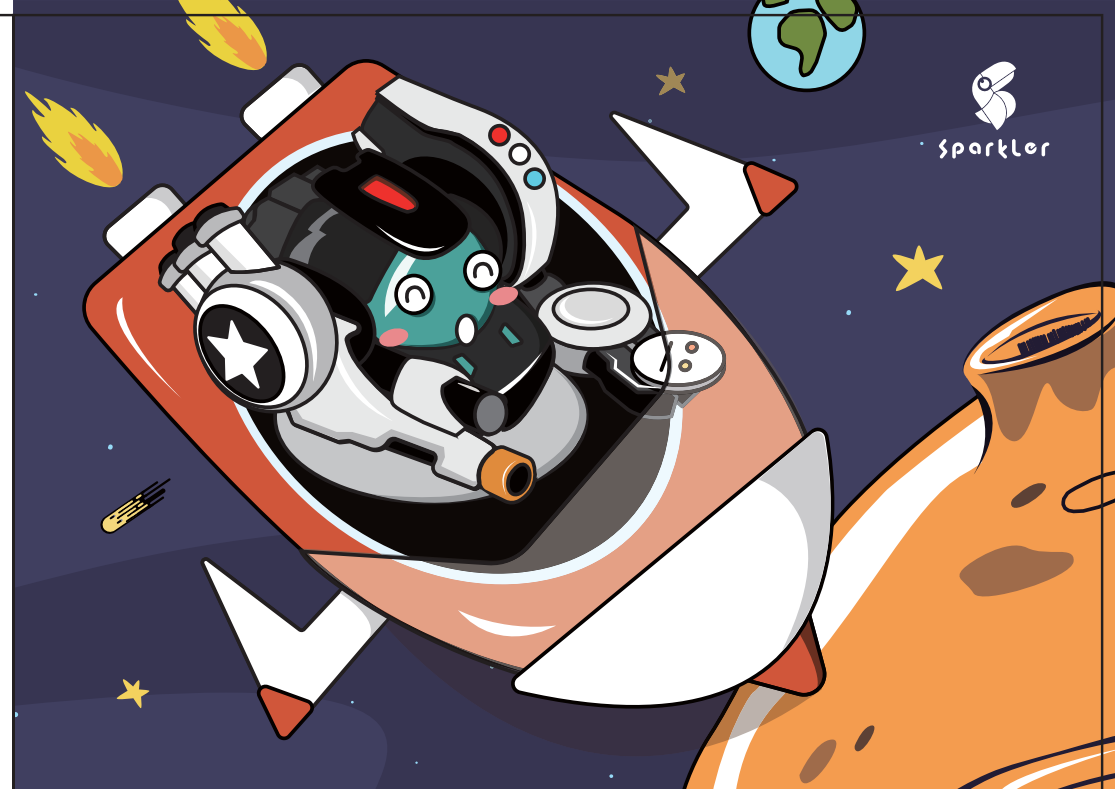


SPACE POLICE ROBOT STARBOT II

Product Name: Robot
Model: SBK50001
Manufacturer: GUANGDONG MZ SMART TECHNOLOGY CO., LTD
Address: Shangxiang Village Industrial Zone, Lianshang Town, Chenghai District, Shantou City
Service Hotline: 4008-240-678
Web site: www.mz-sparkler.com
Service Time: 09:00-11:30 13:00-17:30 (Monday to Friday)



This user guide contains important information. Please keep it spare.

SPACE POLICE

ROBOT STARBOT II

INTELLIGENT REMOTE CONTROL

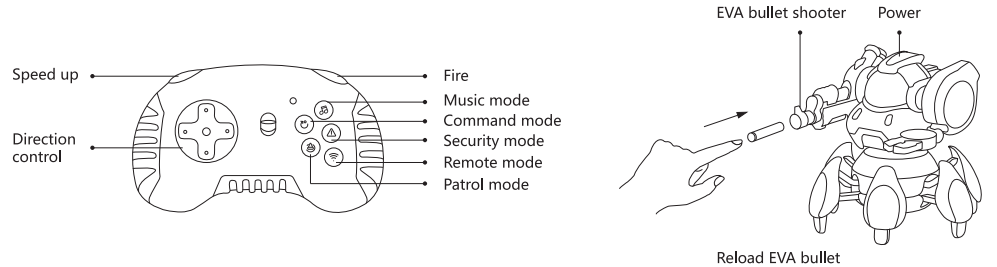
StarBot, kind of the robots created to maintain the law and order of the universe by human. In order to appease the human who have become emotionally unstable during a boring space trip. The A.I. is deliberately designed to be funny. The hexapod feet are designed to fit the land surface of most planets. Firepower not strong as his brother on battlefield, but enough to stop the crime. come on! Let's go patrol with StarBot together!



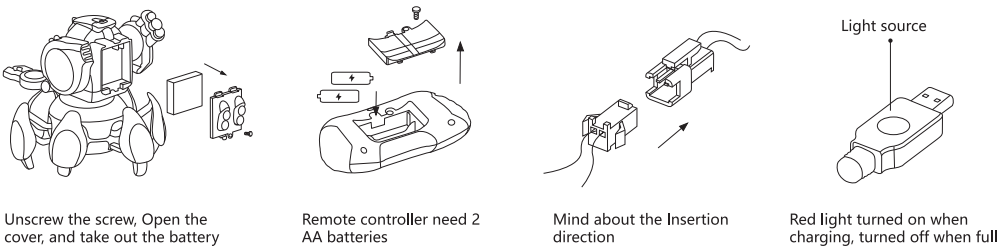
AGES: 6+



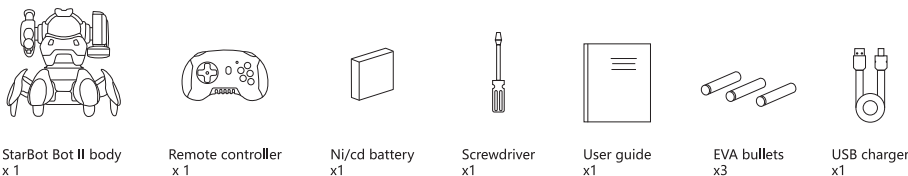
PRODUCT INTRODUCTION



BATTERY USING GUIDE



PACKING LIST

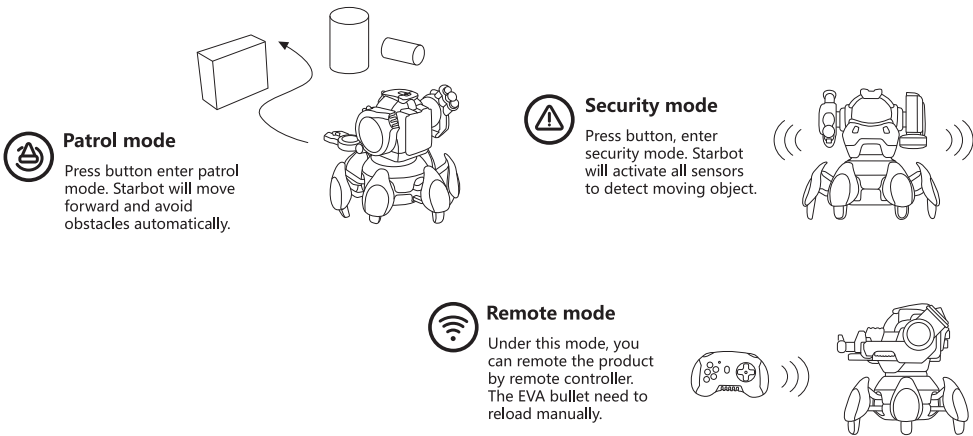
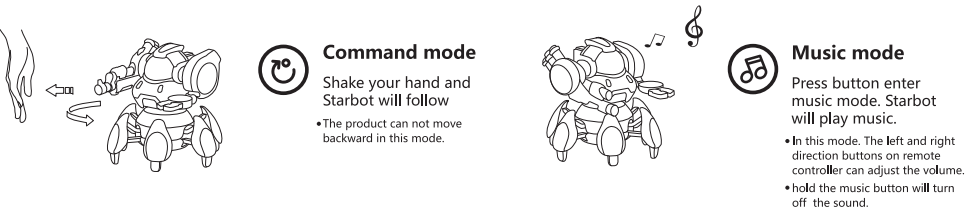


Remarks: There is no remote control battery, the remote control battery is two sections of 5th battery, you need to purchase separately.

ERROR MESSAGE

| Faul status | Cause | Suggestion |
|--|--------------------------------|--------------------------|
| Eyes turn Red, flashing like breathing | StarBot body out of power | Please charge |
| Eyes turn Red, flashing left and right alternately | Remote controller out of power | Please replace batteries |

HOW TO PLAY



WARNING

- All packaging materials, such as plastic buckles, binding lines, labels, etc. Are not part of the product. Not for children to play. For your child's safety, please remove all the package materials before playing.
- CHOKING HAZARD - Small parts. Not for children under 3 years.
- DO NOT aim at eyes or face. DO NOT use eva bullets from third-party.
- CAUTIONS:
 - This product uses a Ni/cd rechargeable battery.
 - DO NOT uses Non-original battery.
 - DO NOT uses Non-original charger.
 - Rechargeable battery loading must be operated by adult.
 - DO NOT charge the battery unattended.
 - DO NOT disassemble, throw, or touch the battery with sharp objects.
 - Stop using If wires, plugs, casing or other parts was damage.
 - Exhausted battery should be taken out.
 - Power terminal should not be short circuit.
 - Please takeout the battery before storing to prevent from leaking.
 - DO NOT put the battery into fire.
- DO NOT play the product or charge the battery in a high temperature environment!

Remarks: The product will sounds "I am out of power" when low power. If not charge in time, the product will shut down automatically.

Note: This equipment has been tested and found to comply with the limits for a Class B digital device, pursuant to Part 15 of the FCC Rules. These limits are designed to provide reasonable protection against harmful interference in a residential installation. This equipment generates, uses and can radiate radio frequency energy and, if not installed and used in accordance with the instructions, may cause harmful interference to radio communications. However, there is no guarantee that interference will not occur in a particular installation. If this equipment does cause harmful interference to radio or television reception, which can be determined by turning the equipment off and on, the user is encouraged to try to correct the interference by one or more of the

- following measures:
- Reorient or relocate the receiving antenna.
 - Increase the separation between the equipment and receiver.
 - Connect the equipment into an outlet on a circuit different from that to which the receiver is connected.
 - Consult the dealer or an experienced radio/TV technician for help.

Warning: changes or modifications not expressly approved by the party responsible for compliance could void the user's authority to operate the equipment.