



Smart LED Ceiling User Manual

Specification

Product:	Smart light ceiling	Smart light ceiling
Luminous Flux:	>880 lm	>1480lm
Input Voltage:	AC 100-240V 50/60HZ	AC 100-240V 50/60HZ
Lamp Base:	KD2/3	KD2/3
Rated Power:	11 W	18 W
Size:	∅ 270*85mm	∅ 340*100mm
Lifespan:	>20000h	>20000h
Wireless Connect:	2.4GHz 802.11b/g/n	2.4GHz 802.11b/g/n

Factory Reset

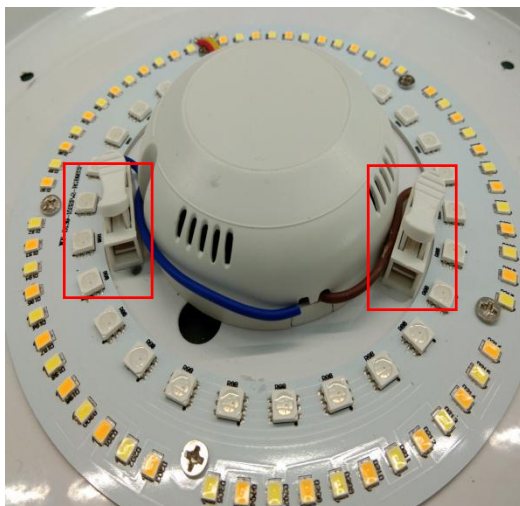
Turn on and off the lamp 5 times. Hold for 2 seconds when the lamp is turned on or off. For the 5th time, hold the turn-on mode for about 5 seconds. If the light blinks, which means the lamp is reset successfully.

Installation

1、Installing ceiling

Install the ceiling and turn on the power switch.

Use quick-connect terminal wiring. Turn the mask open, insert the pre-wired terminals into the quick-connect terminals, then fix the ceiling lamp, a peripheral switch, and finally install the top cover. that's it.





Attention

- 1、Pls insure the power is turned off when installing, removing or inspecting the ceiling.
- 2、Pls don't install the ceiling to dimmable appliances in case of damaging the ceiling (For example, dimmable desk lamp).
- 3、Pls don't use it in a damp environment
- 4、It is not recommended to use the ceiling in a narrow or sealed space in case of losing signals or bad heat dissipation.

Smart Control

This product is compatible with the smart platform and can be controlled by "Smart Life APP", supporting smart voice control such as Amazon echo, Google Home, etc. Simplified steps to install App on your smart device and pair with Amazon Alexa, Google Assistant using Smart Life App on Apple Store/Google Play Store Compatible with any smart phone or including any Android and Apple device.

How to connect Smart Device to Wi-Fi network

1. Download Smart Life from  or . Download or scan the QR code and install the Smart Life App for either IOS or Android. Once downloaded, the app will ask you to register your device. Enter your phone number or email whichever one makes you feel comfortable and select the country you live in. If phone number is selected you will receive a text with a registration code. If you choose email you will then create a password.



Android

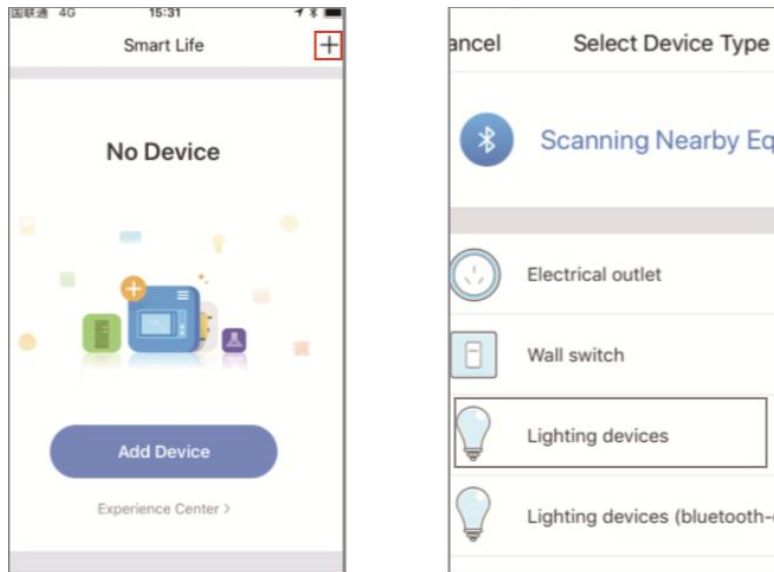


IOS

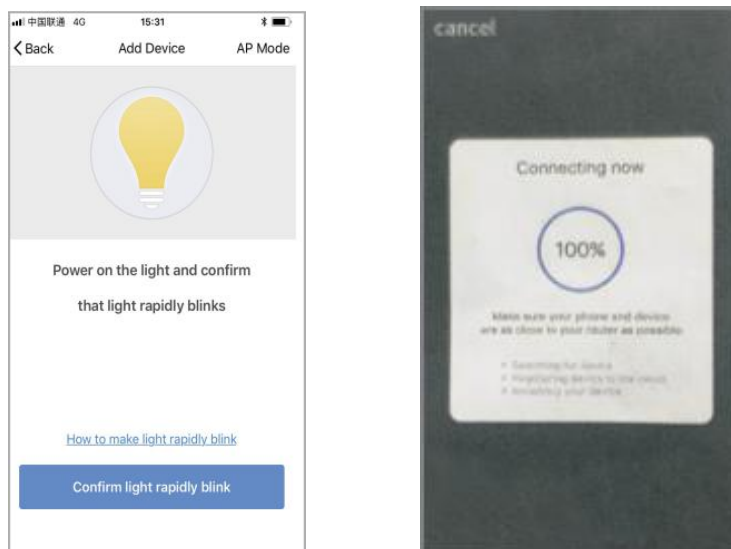
Quick Mode Configuration

1. Make sure quick mode configuration is initiated: the indicator light blinks blue rapidly (twice per second). If it blinks blue slowly (once every 3 seconds), press and holds the power button on the Mini Smart Light for 6 seconds until the indicator light blinks rapidly.

2. Tap the icon “+” on the top right corner of “Smart your smart life”, choose your device type and enter into “Add Device”.



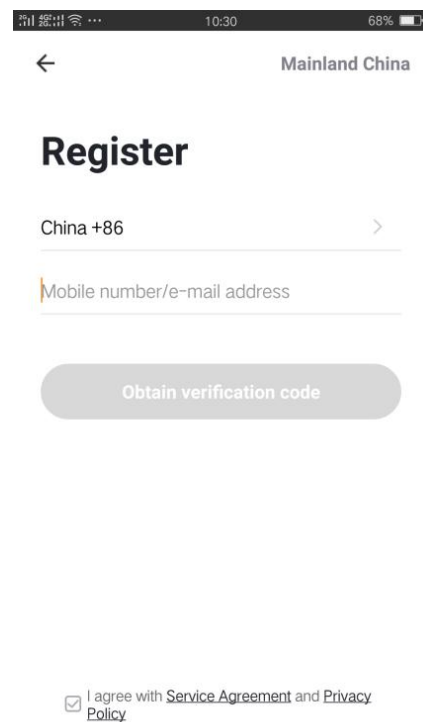
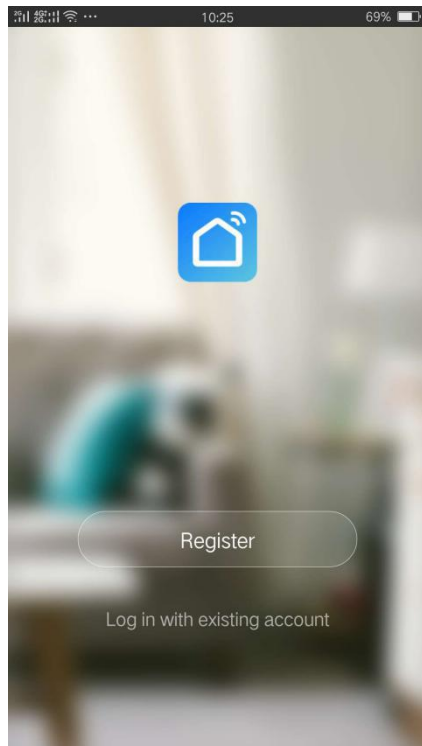
3. Follow the in-app instructions to connect the Smart Light to your Wi-Fi network.



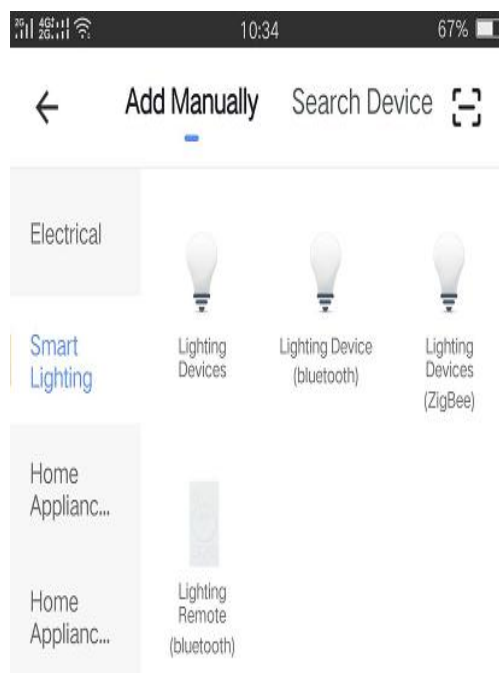
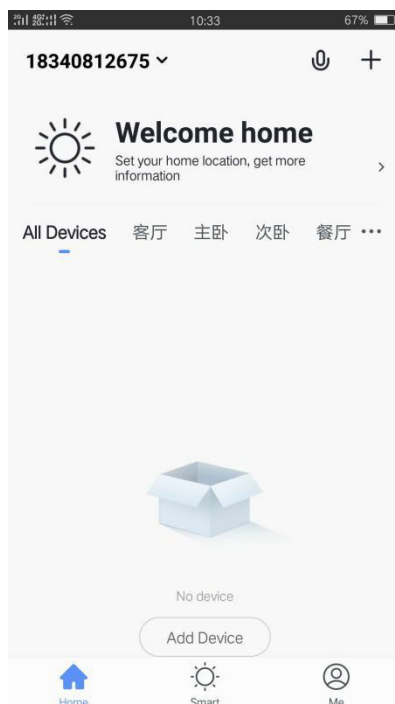
4. Once connected, the App will prompt the connection, and click “Done” .
 5. Now you can control the Mini Smart Light through Smart Life App.
 6. Once the configuration is completed successfully, the indicator light will turn to solid blue and the device will be added to the “Device List”.

Use your phone to control your lights

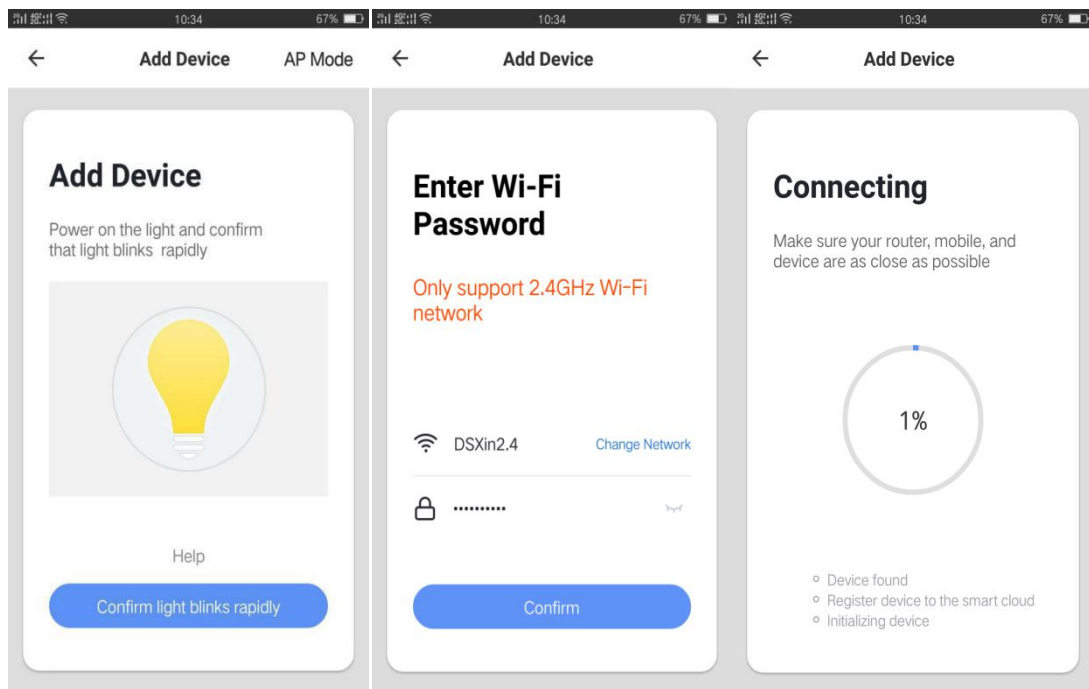
1、Download the smart life app, click to enter the app, log in or register an account.



2、Click Add Device and select **Smart Lighting**---**Lighting Devices**.



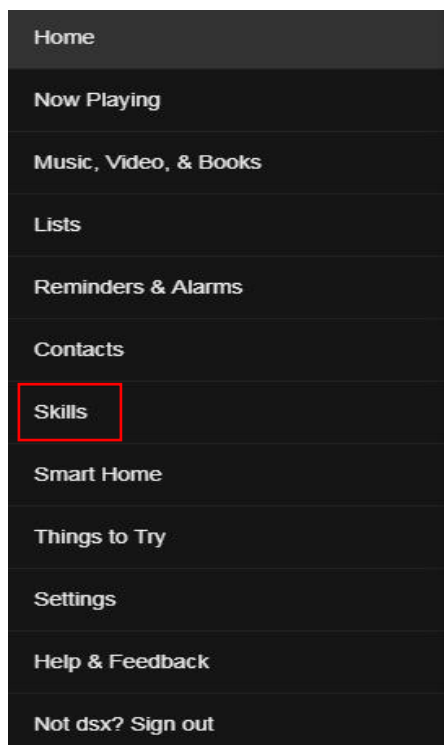
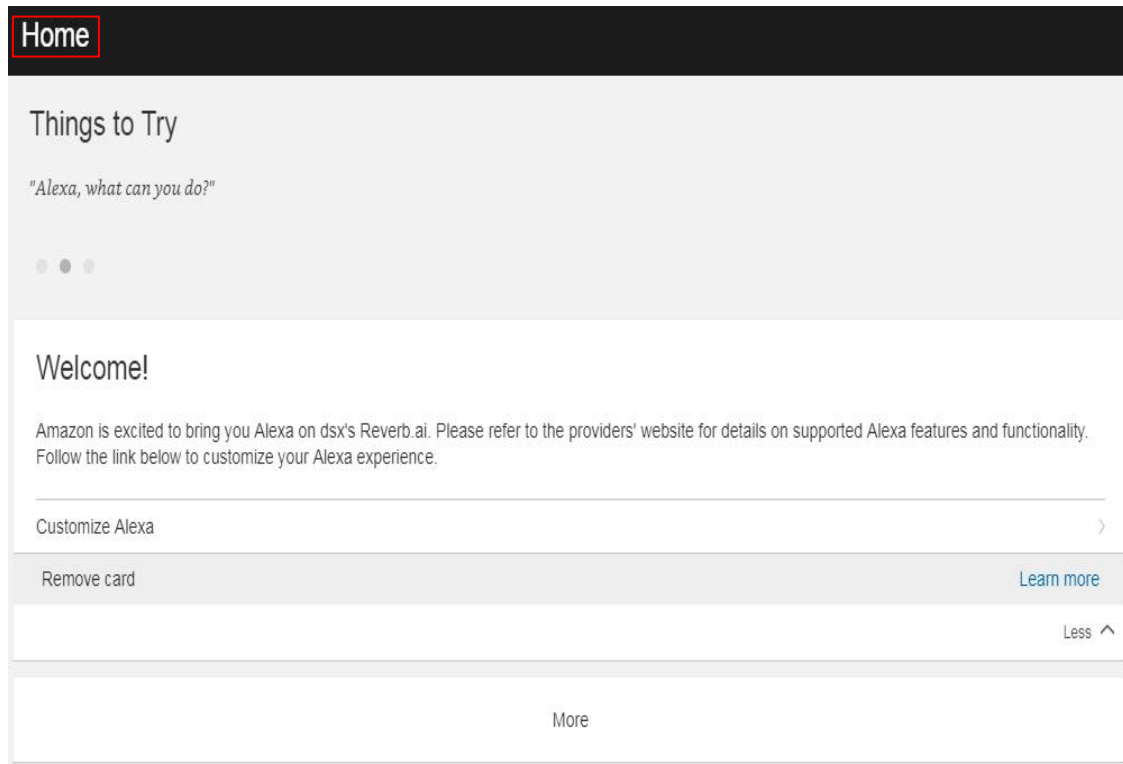
3、Switch the bulb quickly 3 times, and turn it on for the fourth time. The bulb will flash. Now you can click on **Confirm light blinks rapidly** on the app.



4、connect to the network, smart life APP will find your lights, when it reaches 100%, you can use your mobile phone to control your light bulb. For your convenience, you can give your own light bulb a name , like: bedroom light.

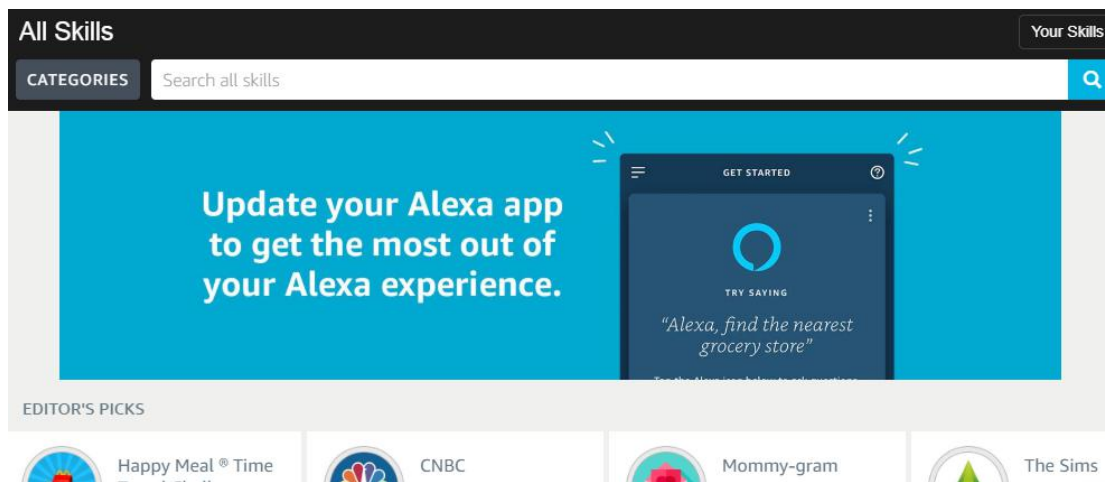
How to connect Smart Device to Amazon Alexa

1. Launch Smart Life App, sign in your account and make sure Mini Smart Light is in the device list.
2. Modify device name so that Alexa can easily recognize, such as Living room Light, Bedroom light. etc.
3. Minimize Smart Life App, then launch the Alexa APP and sign in your Alexa account and make sure you have at least one Alexa voice-controlled device installed like Echo, Echo dot, etc.
4. In the upper left corner of the Home page, click **“Home”** the button to show the App menu. Then click **“Skills”** in the menu.

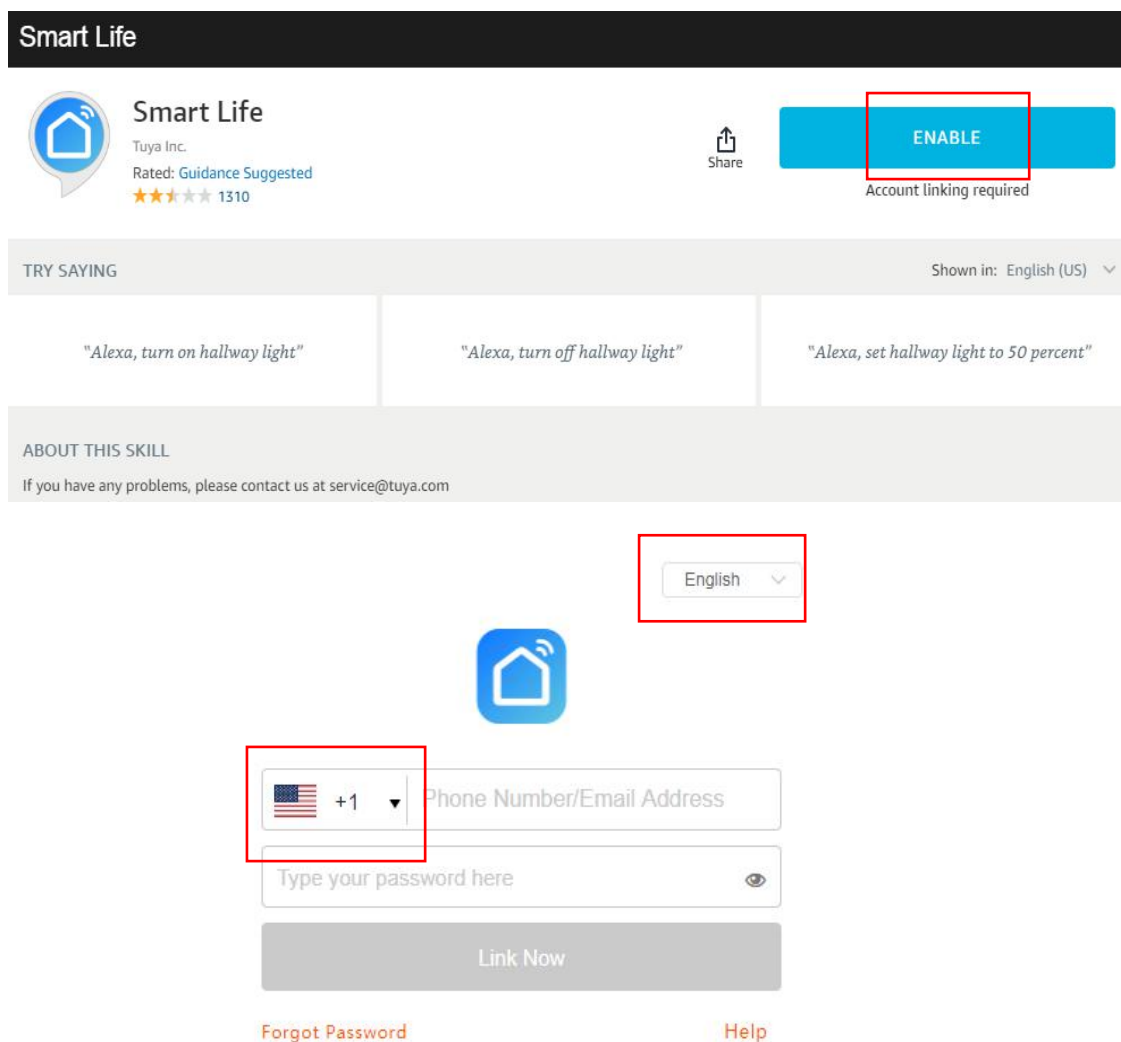


5. Type in “**Smart life**” in the search and click the search button next to it.

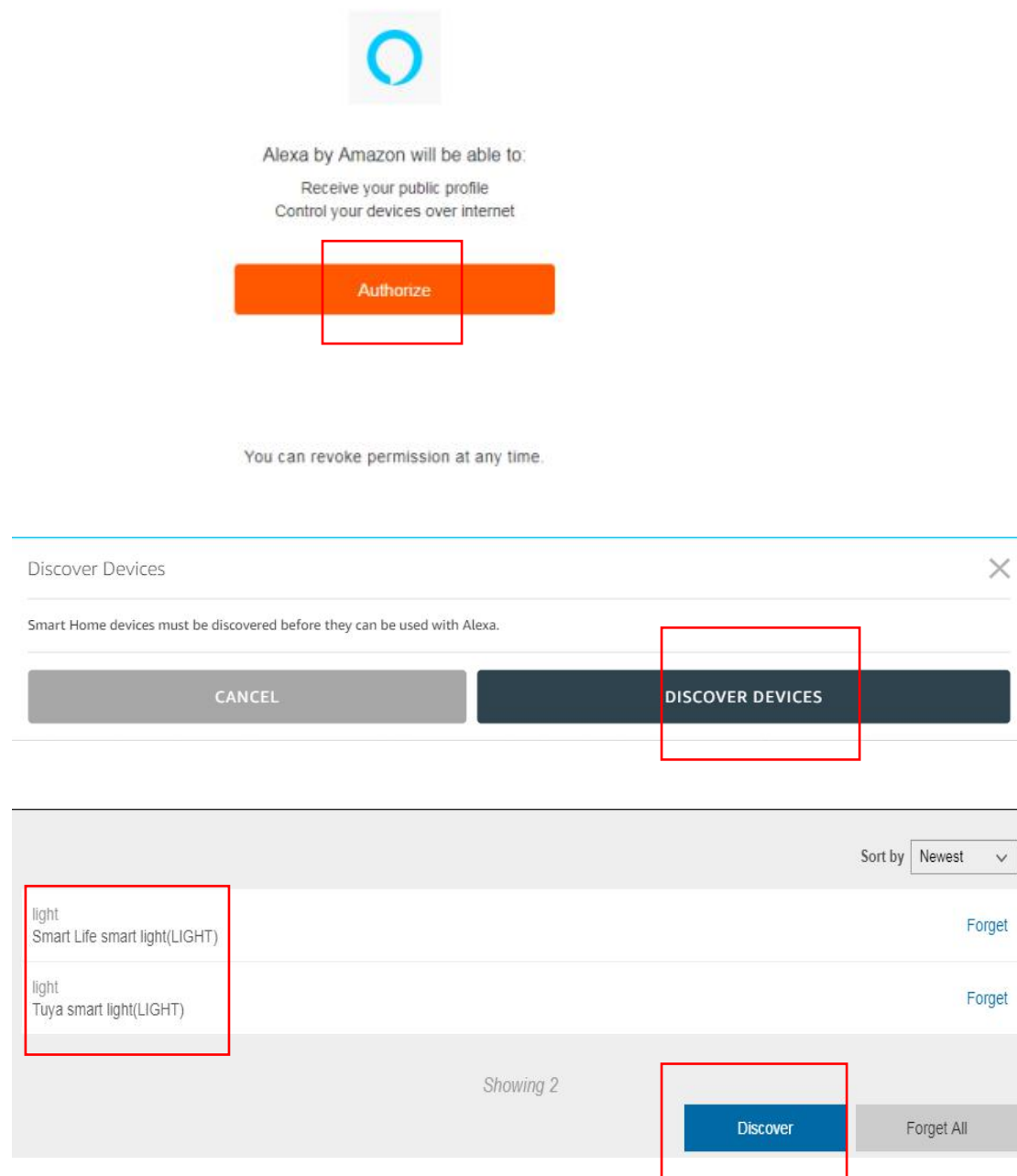




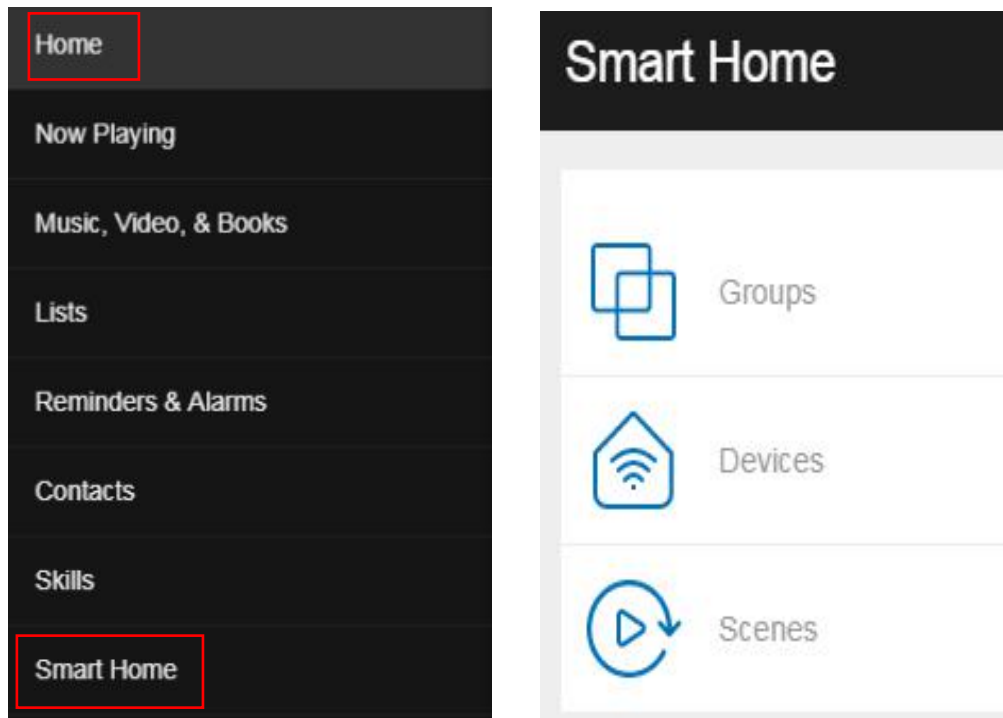
6. Enable **Smart Life** Skill, the sign in your **Smart Life** account to complete the account linking.



7. After successful account linking, ask Alexa to discover devices. After a 20-second device discovery, Alexa will show all the discovered devices.




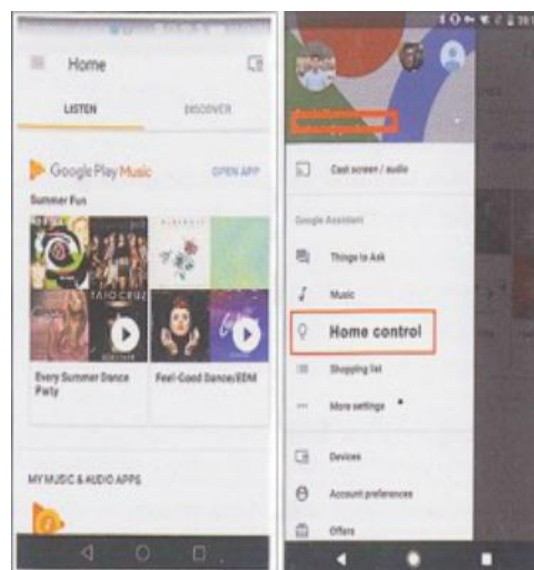
8. Back to Menu by clicking “Home” button, and then click “Smart Home” button.



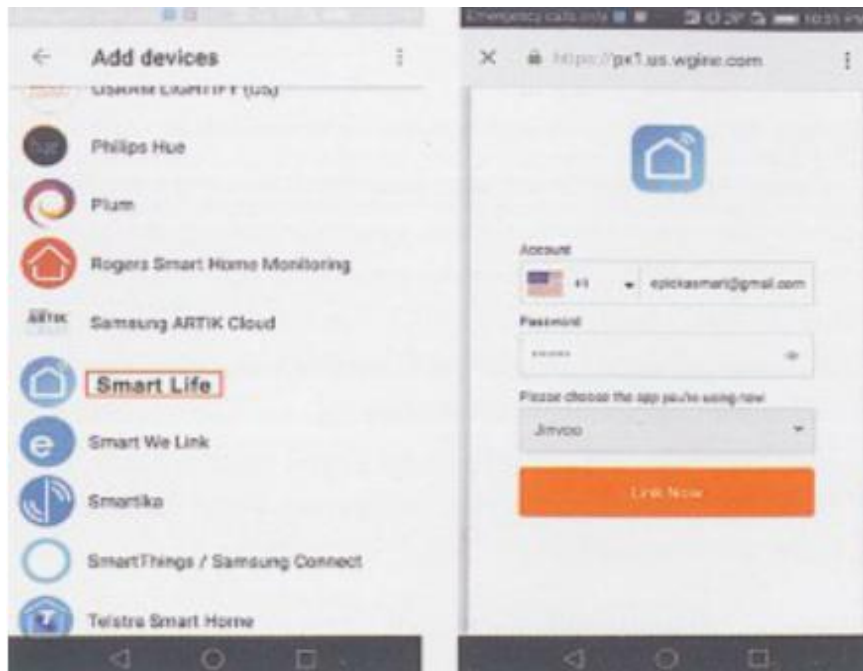
9. In Smart Home page, you can group your devices for different categories. Your **Smart Life APP** has been skilled with Alexa. Now you can control your Smart Light through Alexa.

How to connect Smart Device to Google Home

1. Launch the Google Home App and make sure Google Home speaker is installed. If not, please follow Google Home speaker installation instruction to complete the installation.
2. Once Google Home is installed, in the upper left corner of APP Home page, clicking  button to show APP menu, then clicking “Home Control”



3. On “Add devices” page, scroll down to find “**Smart Life**” and then click it. Sign in Smart Life App with your Smart Life App account and password choose **Smart Life App** in the drop down menu to complete the account linking.

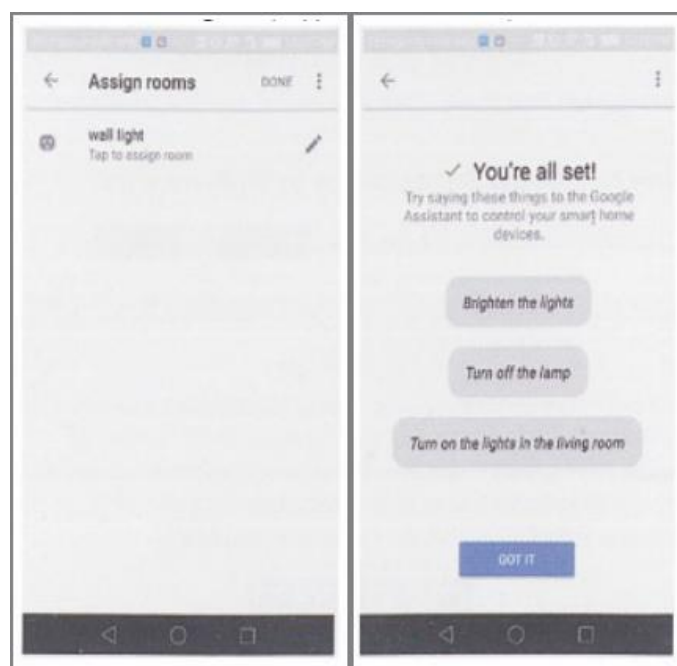


4. After successful account lining, in Google Home App you can see all the smart devices from your Smart Life App account. You can assign rooms for each device.

5. Now you can use Google Home to control your smart device, you can say like:

OK Google, turn on/off wall light

OK Google, set bedroom light to red



Product Features



Color
Adjustment



Brightness
Adjustment



One-key
Open ration



Scene Mode
Switch



Timing
Switch



Voice
Control



Phone
Control



Firmware
Upgrade

Product Performance Fault List

Performance failure	The ceiling is not working when powered on.
	The ceiling is blinking abnormally.
	Lacking of color or can't change color.
	APP can't connect with or control the ceiling, causing by the ceiling itself.
	Non-human factor (structure damage) affecting the use of ceiling or some other safety abnormality.

Safety Precautions

- 1、Please confirm the working voltage before using this product, the use of inappropriate voltage may cause damage to the product and security risks.
- 2、Please don't dismantle the product by yourself.
- 3、The ceiling will generate heat when working. Pls don't use it in a sealed lamp for a long time. Keep the air flow around.
- 4、The optical radiation of the led lamp meets the IEC62471-2005 exemption level requirements.

Warranty Revocation Rules

- 1、Unauthorized repairs, misuse, collision, negligence, liquid intrusion, accident, alteration or tearing, alteration, labeling, security markings.
- 2、Exceeds warranty period.
- 3、Damage caused by force majeure.
- 4、Failures which are not listed in "Product Performance Fault List".

changes or modifications not expressly approved by the party responsible for compliance could void the user's authority to operate the equipment.

This device complies with Part 15 of the FCC Rules. Operation is subject to the following two conditions:

- (1) this device may not cause harmful interference, and
- (2) this device must accept any interference received, including interference that may cause undesired operation.

Note: This equipment has been tested and found to comply with the limits for a Class B digital device, pursuant to Part 15 of the FCC Rules. These limits are designed to provide reasonable protection against harmful interference in a residential installation. This equipment generates, uses, and can radiate radio frequency energy, and if not installed and used in accordance with the instructions, may cause harmful interference to radio communications. However, there is no guarantee that interference will not occur in a particular installation. If this equipment does cause harmful interference to radio or television reception, which can be determined by turning the equipment off and on, the user is encouraged to try to correct the interference by one or more of the following measures:

- Reorient or relocate the receiving antenna.
- Increase the separation between the equipment and receiver.
- Connect the equipment into an outlet on a circuit different from that to which the receiver is connected.
- Consult the dealer or an experienced radio/TV technician for help.

FCC 20cm Statement

This equipment complies with FCC radiation exposure limits set forth for an uncontrolled environment. This equipment should be installed and operated with a minimum distance of 20cm between the radiator & your body. This transmitter must not be co-located or operating in conjunction with any other antenna or transmitter.