



Android / iOS

WIFI SMART SIREN USER MANUAL



Please read this manual carefully before use.

Features

- Based on the TUYA smart home platform, work with most of the TUYA smart based smart products.
- On-site high-decibel alarm, flashing lights and other alarm modes.
- Home Arm, Away Arm, Disarm
- Low-battery detection
- System power off detection.
- Tamper detection.
- Built-in battery.
- Support Amazon Alexa, Google Assistant.

Download the app and register

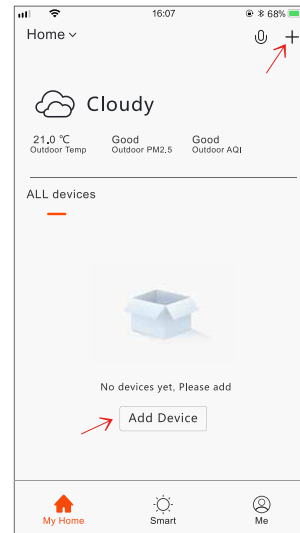
Search for “TuyaSmart ” or scan the QR code below to download the app and register.



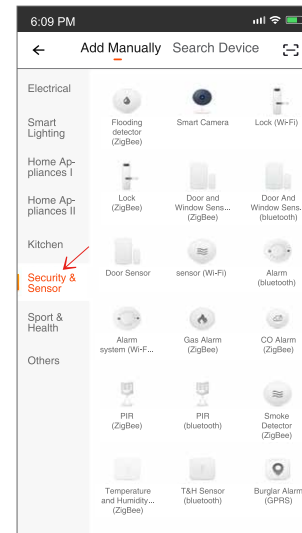
How to connect WiFi network.#1:

“Default mode”

① Open the APP homepage, press “+” in the upper right corner to add devices → select “ALL devices” → select “Alarm system”



①

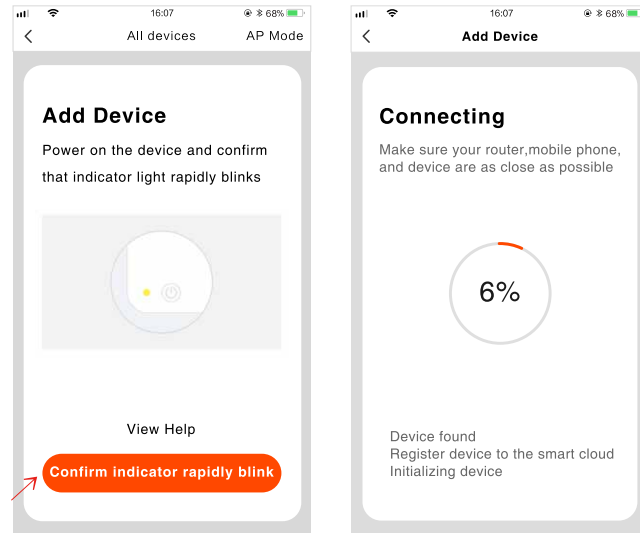


②

② Re-open the smart siren switch, re-connect the power, the indicator flashes quickly, ready to connect WiFi.



③ “Confirm indicator quickly blink” → Enter WiFi password (2.4G WiFi only) → OK

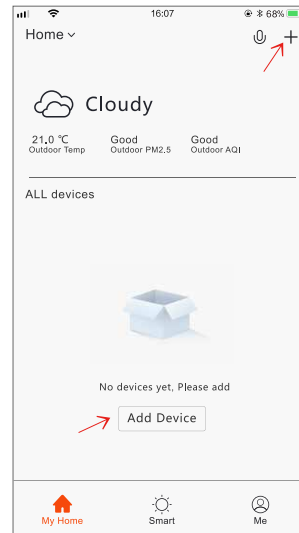


How to connect WIFI network, #2:

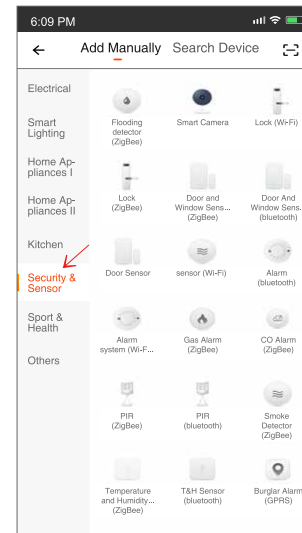
“compatibility mode”

If the default way to connect WIFI is unsuccessful, you can select “AP Mode”.

① Open the APP homepage, press “+” in the upper right corner to add devices → select “ALL devices” → select “Alarm system”

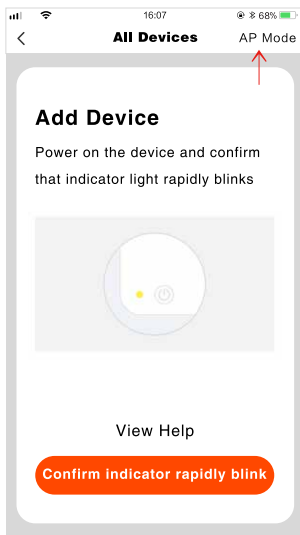


①



②

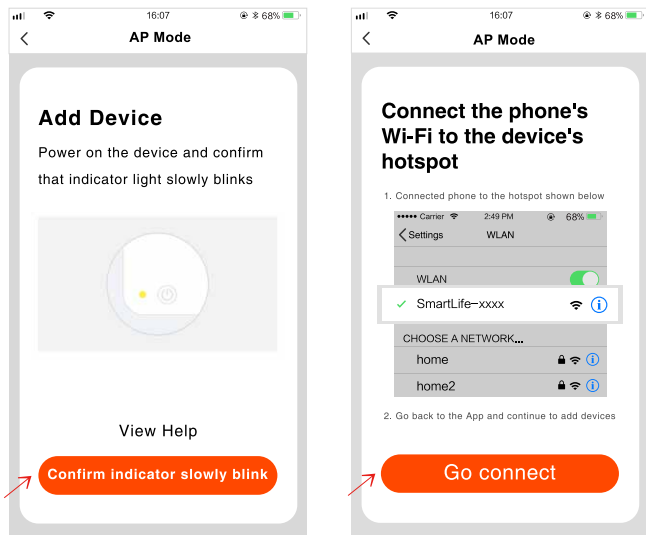
- ② Click on “ AP Mode ” at the top right of the app.



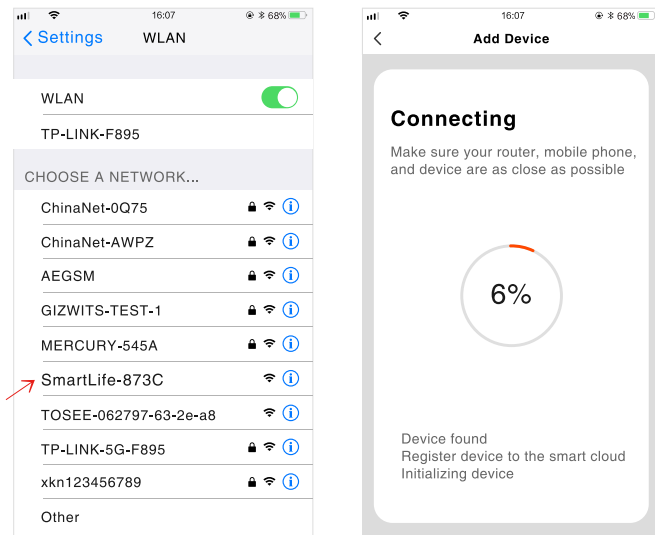
- ③ Re-open the smart siren switch, re-connect the power, the indicator light flashes quickly, press and hold the RESET button for 5 seconds, the indicator light flashes slowly, ready to connect.



- ④ “ Confirm indicator slowly blink ” → Enter the network password
(2.4G WiFi only) → OK → Go connect.



- ⑤ Find “ SmartLife-xxx ” in the wifi list of your mobile and click Connect
→ Return to “ TuyaSmart ” APP.



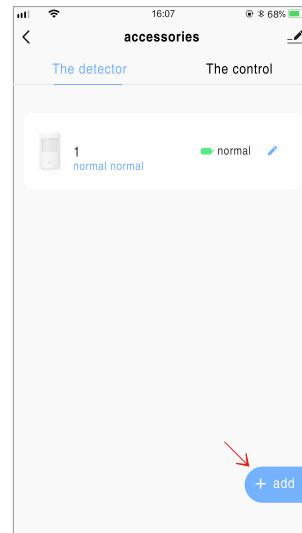
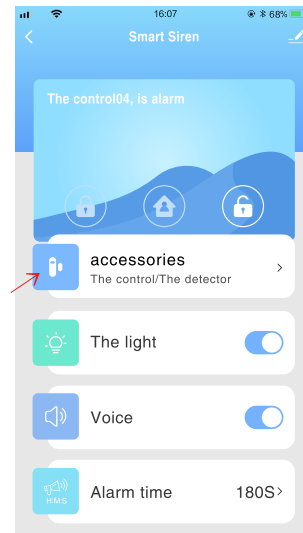
WiFi connection notes:

1. Does not support 5G router..
2. If the above two way connection both fail, please try to restart the router.
3. Siren host and mobile phone as close as possible to the router.

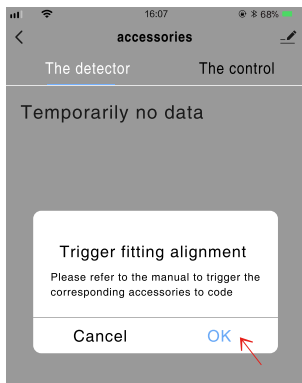
Add detectors and remotes:

Method 1:Add detectors and remotes via APP.

- ① Click on the APP homepage “ accessories ” → select “ The detector ” or “ The control ” → click on “ add ”



- ② Click “OK” → smart siren light keep on → accessories send signals
→ smart siren light flash 3 times, adding is successful.

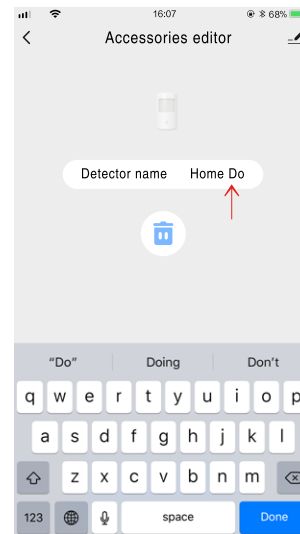
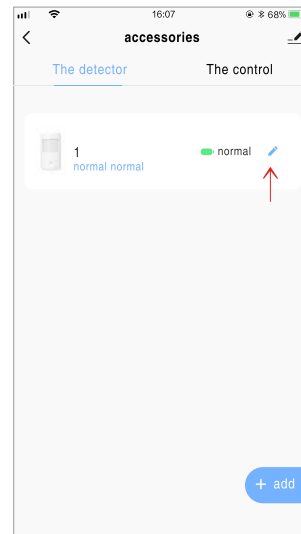


Method 2: Add detectors and remotes via the buttons on the siren

Press “RESET” button, the indicator light keep on, trigger the detector → siren indicator light flash 3 times, adding successfully. Pls do it like this way to add more detectors.



Edit the accessory name:

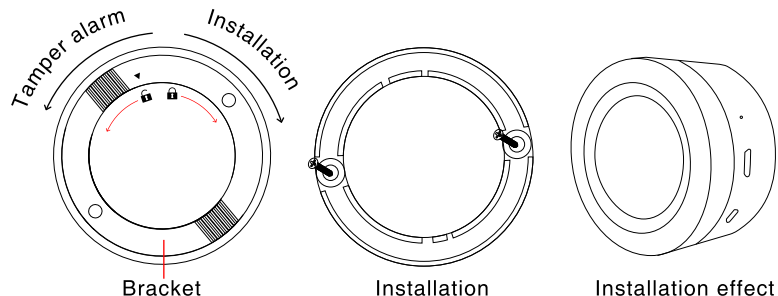
In order to make it easier to distinguish different alarm events, you can edit the accessories' name (within 24 characters).



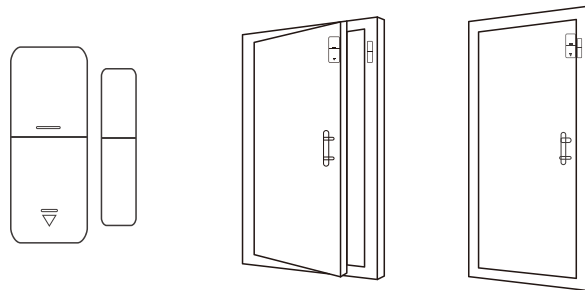
Installation note:

Install the siren:

Move the bracket to () direction, take out the bracket and fix it with screw, install the siren body to the bracket and rotate it to () direction.



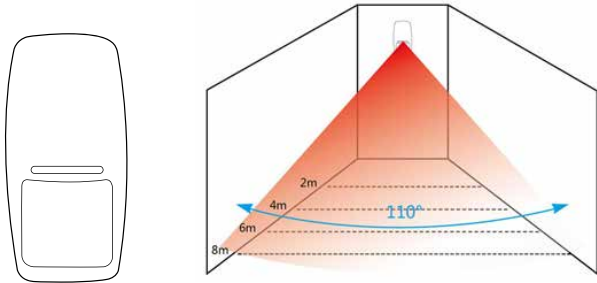
Install the Door Detector:



- ① The gap between the magnet and the sensor should be less than 10mm.
- ② After the installation, if the indicate light of the detector is on when the door is opened, it proves it is installed successfully
- ③ If the indicate light of the door detector flashes when it is triggered, it means the battery of the sensor is in low voltage, and you need to change the battery as soon as possible.

- ④ The transmit distance of the detectors is less than 80meters in the open area. Please test the distance before installing. The obstacles will change the transmitting distance.

Install the PIR Motion Detector:



To avoid the false alarm, please pay attention to the following points in stalling the PIR motion detector:

- ① Do not face the glass door/window.
- ② Do not face the big object which is easy to swing.
- ③ Do not face the cold and heat air vent or cold and heat source.
- ④ The furniture, miniascape, or any other isolations should be away from the detecting scope.
- ⑤ Do not install 2 or more detectors in the same area or it will cause the interference when alarm.
- ⑥ When the detector is triggered and the LED indicator flashes, it means the battery is in low voltage, please change it as soon as possible.
- ⑦ The detecting distance is less than 8meters, the transmitting distance is less than 80meters. Please test the distance after installing. The obstacles will influence the distance.

Specifications:

Indicator light keep flashing: not connect to WiFi

Arm: alarm with sound and light flash

Home Arm: only light flash to alarm

Disarm: only SOS alarm available

Remote controls: max 8

Detectors: max 24

Volume: high / medium / low

Beep time: 1-180 seconds adjustable

Timing control: arm / home arm / disarm

Accessories frequency: 433Mhz (can be customized to any frequency between 300-912M)

FCC ID:2AT7VDY-H1

FCC Statement:

This device complies with Part 15 of the FCC rules. Operation is subject to the following two conditions: 1) this device may not cause harmful interference, and 2) this device must accept any interference received, including interference that may cause undesired operation.

Note: This equipment has been tested and found to comply with the limits for a Class B digital device, pursuant to part 15 of the FCC Rules. These limits are designed to provide reasonable protection against harmful interference in a residential installation. This equipment generates uses and can radiate radio frequency energy and, if not installed and used in accordance with the instructions, may cause harmful interference to radio communications. However, there is no guarantee that interference will not occur in particular installation. If this equipment does cause harmful interference to radio or television reception, which can be determined by turning the equipment off and on, the user is encouraged to try to correct the interference by one or more of the following measures:

--Reorient or relocate the receiving antenna.

--Increase the separation between the equipment and receiver.

--Connect the equipment into an outlet on a circuit different from that to which the receiver is connected.

--Consult the dealer or an experienced radio/TV technician for help.

Changes or modifications not expressly approved by the party responsible for compliance could void the user's authority to operate the equipment.

FCC Radiation Exposure Statement

This device complies with FCC RF radiation exposure limits set forth for an uncontrolled environment.

This transmitter must not be co-located or operating in conjunction with any other antenna or transmitter.