

FOREO
SWEDEN



LUNA™ 4 go (gen 2)

FACIAL CLEANSING & FIRMING DEVICE



ONLINE MANUAL

FULL USER MANUAL

GETTING STARTED

Congratulations on acquiring your new LUNA™ 4 go (gen 2) & joining millions worldwide who believe in smarter selfcare. Before you start enjoying your new life with sophisticated skincare technology & professional results in the comfort of your home, please take a few moments to carefully read this manual. Welcome to the future of skincare.

Please READ ALL INSTRUCTIONS BEFORE USE and utilize this product only for its intended use as described in this manual.

⚠ WARNING: NO MODIFICATION OF THIS EQUIPMENT IS ALLOWED.

LUNA™ 4 go (gen 2) OVERVIEW

Meet LUNA™ 4 go (gen 2) - your compact, travel-friendly, 2-in-1 cleansing & firming skincare companion. The ultra-hygienic soft silicone combines with 8 manually adjustable T-Sonic™ pulsation intensities, allowing you a perfectly tailored cleanse in seconds. Lift away dirt, oil & excess sebum in just 1 minute with an ergonomic, 2-zone brush featuring thinner & thicker touchpoints to suit all skin types.

The LUNA™ 4 go (gen 2)'s T-Sonic™ pulsations travel into the skin, providing a cleanse far superior to hand-washing while enhancing the absorption of your favorite skincare products. Flip your device and use the firming concentric silicone ridges at the back to channel T-Sonic™ pulsations onto age-sensitive areas to diminish visible signs of aging for smooth, younger-looking skin.

These benefits, paired with the practical, long-lasting USB charge & 100% waterproof Swedish design, make LUNA™ 4 go (gen 2) the iconic & essential core of a daily routine-at home & on the go - for fresh, glowing, flawless results.

GETTING TO KNOW LUNA™ 4 go (gen 2)

THINNER & THICKER SILICONE TOUCHPOINTS

Thinner touchpoints gently cleanse sensitive or normal skin while thicker touchpoints offer precision cleansing for oily parts like T-zone

EXTRA SOFT & ULTRA-HYGIENIC SILICONE

35x more hygienic than nylon bristles and suitable for all skin types. BPA & phthalate free

SMART SWEDISH DESIGN

Tailor-made for each skin type with no replacement br heads required

INDICATOR LIGHT

Flashes to indicate when device is in Firming Massage mode and when device needs to be charged

T-SONIC™ PULSATIONS

Remove dirt, oil, & makeup residue in 1 minute & enhance absorption of active ingredients

FIRMING FACIAL MASSAGE

Targeted massage routines give skin a firmer, more youthful appearance

POWER BUTTON

Short press to turn device on and off.

INTENSITY BUTTONS

Easily change between 8 T-Sonic™ intensities

CHARGING PORT

Up to 300 uses per charge. 100% waterproof closure

USB CABLE

Charge anytime, anywhere



UNLOCK YOUR DEVICE

LUNA™ 4 go (gen 2) is locked when first unboxed - unlock it by holding down the + and - buttons together for 3 seconds. The light will flash to indicate your device is unlocked. Should you wish to lock your device for travel convenience, follow the same procedure.

HOW TO USE LUNA™ 4 go (gen 2)

CLEANSING MODE

1. Remove all makeup, dampen skin and then apply FOREO cleanser to your face.
2. Press power button to turn on the device and press the +/- buttons to select your preferred cleansing intensity.
3. Glide LUNA™ 4 go's touchpoints in circular motions over your face until the built-in timer turns the device off.
4. Rinse and pat your face dry.



FIRMING MESSAGE MODE

1. Apply FOREO serum to clean, dry skin.
2. Press power button to turn on the device and press the +/- buttons to select your preferred massage intensity.
3. Relax your face and glide LUNA™ 4 go's firming massage surface in outward motions following the shape of your face until the built-in timer turns the device off.
4. Continue with your usual skincare routine.



CLEANING YOUR LUNA™ 4 go (gen 2)

Always clean LUNA™ 4 go (gen 2) thoroughly after use. Wash the brush surface with water and soap, then rinse with warm water. Avoid using clay-based, silicone-based or grainy cleansers, exfoliators or scrubs, as they may damage the device's soft silicone touchpoints. Pat dry with a lint-free cloth or towel. After use, we recommend spraying the device with FOREO Silicone Cleaning Spray and rinsing with warm water for optimal results.

NOTE: Never use cleaning products containing alcohol, petrol, or acetone, as they may irritate the skin and damage the silicone.

IMPORTANT

FOR OPTIMUM SAFETY:

- If you have a skin condition or any medical concerns, please consult a dermatologist before use.
- Cleansing with LUNA™ 4 go (gen 2) should be comfortable - if you experience discomfort, discontinue use immediately and consult a physician.
- Exercise particular care when cleansing the under-eye regions and do not bring the device into contact with the eyelids or eyes themselves.
- For reasons of hygiene, we do not recommend sharing your LUNA™ 4 go (gen 2) with anyone else.
- Avoid leaving your LUNA™ 4 go (gen 2) in direct sunlight and never expose it to extreme heat or boiling water.
- Close supervision is necessary when this device is used by, on, or near children and those with reduced physical and mental abilities.
- Discontinue use if this product appears damaged in any way. This product contains no serviceable parts.
- Given the efficiency of the FOREO cleansing routine, we recommend that you do not use LUNA™ 4 go (gen 2) for more than 3 minutes at a time.
- Use this device only for its intended use as described in this manual. If you do not find the answer to your specific question, or if you have any other questions regarding the device's operation, please visit www.foreo.com

TROUBLESHOOTING

PRECAUTIONS TO BE TAKEN IN THE EVENT OF CHANGES IN THE PERFORMANCE OF LUNA™ 4 go (gen 2).

If LUNA™ 4 go (gen 2) is not activated when pressing the center button:

- Battery is dead, Recharge using USB charging cable for up to 2 hours until fully charged, and then restart your device by holding down the power button.

If LUNA™ 4 cannot be switched off and/or interface buttons do not respond:

- Microprocessor is temporarily malfunctioning. Press and hold power button to restart the device.

WARRANTY TERMS & CONDITIONS

REGISTER WARRANTY

To activate your 2-Year Limited Warranty register through the FOREO app, or visit foreo.com/product-registration for more information.

2-YEAR LIMITED WARRANTY

FOREO warrants this device for a period of TWO (2) YEARS (except in countries where national law requires longer minimum guarantee) after the original date of purchase against defects due to faulty workmanship or materials arising from normal use of the device. The warranty covers working parts that affect the function of the device. It does NOT cover cosmetic deterioration caused by fair wear and tear, or damage caused by accident, misuse, or neglect. Any attempt to open or take apart the device (or its accessories) will void the warranty.

If you discover a defect and notify FOREO during the warranty period, FOREO will, at its discretion, replace the device free of charge. Claims under warranty must be supported by reasonable evidence that the date of the claim is within the warranty period. To validate your warranty, please keep your original purchase receipt together with these warranty conditions for the duration of the warranty period.

To claim your warranty, you must log in to your account at www.foreo.com and select the option to make a warranty claim. Shipping costs are nonrefundable. This undertaking is in addition to your statutory rights as a consumer and does not affect those rights in any way.

DISPOSAL INFORMATION

Disposal of old electronic equipment (applicable in the EU and other European countries with separate waste collection systems).



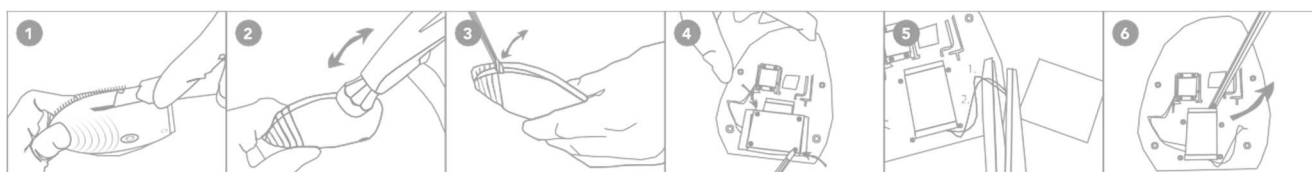
The crossed-out dustbin symbol indicates that this device should not be treated as household waste, but rather be brought to the appropriate collection point for recycling of electrical and electronic equipment. By ensuring this device is disposed of correctly, you will help prevent the potential negative consequences for the environment and human health which could be caused by inappropriate waste handling of the product. The recycling of materials will also help conserve natural resources.

For more information about the recycling of your device, please contact your local household waste disposal service or your place of purchase.

BATTERY REMOVAL

NOTE: This process is not reversible. Opening the device will void its warranty. This action must only be undertaken when the device is ready to be disposed of.

Because this device contains a lithium-ion battery, the battery must be removed before disposal and should not be thrown away with household waste. To remove the battery, open the inner plastic shell after removing silicone outer layer and remove the battery to be disposed of in accordance with your local environmental regulations. Wear gloves during this process for your safety. Detailed visual instructions are provided below.



SPECIFICATIONS

MATERIALS: Body-safe silicone & ABS plastic

COLOR: Lavender, Apricot, Pistachio, Evergreen

SIZE: 65*30.6*59mm

WEIGHT: 54g

BATTERY: Li-ion 300mAh 3.7V

USAGE: Up to 300

STANDBY: 90 days

FREQUENCY: 100 Hz

MAX NOISE LEVEL: <50dB

INTERFACE: 3- button

DISCLAIMER: Users of this device do so at their own risk. Neither FOREO nor its retailers assume any responsibility or liability for any injuries or damages, physical or otherwise, resulting, directly or indirectly, from the use of this device. Further, FOREO reserves the right to revise this publication and to make changes from time to time in the contents thereof without obligation to notify any person of such revision or changes.

Any changes or modifications not expressly approved by the party responsible for compliance could void the user's authority to operate the equipment. This device complies with part 15 of the FCC Rules. Operation is subject to the following two conditions: (1) This device may not cause harmful interference, and (2) this device must accept any interference received, including interference that may cause undesired operation.

This device contains licence-exempt transmitter(s)/receiver(s) that comply with Innovation, Science and Economic Development Canada's licence-exempt RSS(s). Operation is subject to the following two conditions:

- (1) This device may not cause interference.
- (2) This device must accept any interference, including interference that may cause undesired operation of the device.

l'appareil contient des émetteurs/récepteurs exempts de licence qui sont conformes aux CNR exempts de licence d'Innovation, Sciences et Développement économique Canada. L'exploitation est soumise aux deux conditions suivantes :

- (1) l'appareil ne doit pas produire de brouillage,
- (2) l'utilisateur de l'appareil doit accepter tout brouillage radioélectrique subi, même si le brouillage est susceptible d'en compromettre le fonctionnement.

RF EXPOSURE STATEMENT: This equipment complies with FCC radiation exposure limits set forth for an uncontrolled environment. The device has been evaluated to meet general RF exposure requirement. The device can be used in portable exposure condition without restriction.

FREQUENTLY ASKED QUESTIONS

BASICS

1. WHAT SHOULD I DO AFTER I RECEIVE MY LUNA™ 4 go (gen 2) DEVICE?

Congratulations on discovering smarter skincare! First things first - download the FOREO For You app for free to register your device.

2. WHAT COMES WITH MY LUNA™ 4 go (gen 2) DEVICE?

1 LUNA™ 4 go (gen 2) Device, 1 USB Charging Cable, 1 User Manual.

3. HOW DO I TURN MY LUNA™ 4 go (gen 2) DEVICE ON AND OFF?

Press the power button on your LUNA™ 4 go (gen 2) device to turn it on, and hold it for 3 seconds to turn off the device.

4. MY DEVICE IS NOT ACTIVATED WHEN PRESSING THE POWER BUTTON?

The battery is dead. Recharge using a USB charging cable until fully charged and then restart your device by holding down the power button.

5. HOW DO I CHARGE MY LUNA™ 4 go (gen 2)?

LUNA™ 4 go (gen 2) is USB-rechargeable, with a 2-hour charge delivering up to 300 uses (based on a 1-minute treatment time per use). The USB charging cable is provided with the device.

6. WHY DOESN'T MY CHARGER GO ALL THE WAY IN?

The charging cable for your LUNA™ 4 go (gen 2) is not supposed to go all the way into the device. It is completely normal for it to stick out a bit from the device.

7. MY CHARGE DIDN'T LAST 300 USES.

300 uses refer to 300 minutes, so the duration of the charge depends on how often and for how long the device is used.

8. IS THE CHARGING POINT ON LUNA™ 4 go (gen 2) WATERPROOF?

Yes, the charging point is waterproof which means you can safely use the device in the shower. Make sure the device is completely dry before charging and do not use it while charging. Once you are done using your device, store it in a dry area. Do not leave the device submerged in water.

USING LUNA™ 4 go (gen 2)

1. HOW OFTEN CAN I USE MY LUNA™ 4 go (gen 2) DEVICE?

LUNA™ 4 devices are safe and gentle enough to use every day, either morning or night. We recommend using your LUNA™ 4 go (gen 2) any time your skin needs a deeper cleanse.

2. HOW LONG CAN I USE IT PER DAY?

Given the efficiency of cleansing, we recommend that you do not use LUNA™ 4 go (gen 2) for more than 3 minutes per day.

3. CAN I SHARE MY LUNA™ 4 go (gen 2) WITH OTHER PEOPLE, SUCH AS FAMILY MEMBERS?

For hygiene reasons, we do not recommend sharing your LUNA™ 4 go (gen 2) with anyone else.

4. CAN LUNA™ 4 go (gen 2) BE USED FOR REMOVING MAKEUP?

All make-up should be removed before doing the cleansing routine with any of our devices.

5. HOW HARD SHOULD I PRESS WHEN I MOVE MY LUNA™ 4 go (gen 2)?

There is no need to use any pressure when using LUNA™ 4 go (gen 2). Gently cleanse your face using circular movements on the cheeks and forehead, gliding up and down the nose.

6. CAN I USE FOREO LUNA™ 4 go (gen 2) AROUND THE EYE AREA?

Yes, you can use your LUNA™ 4 go (gen 2) around the eye area. When doing so, please exercise particular care in the under-eye regions and do not bring the device into contact with the eyelids or eyes themselves.

7. WHAT KIND OF FACIAL CLEANSER CAN I USE?

You can use the cleanser of your preference as long as it does not contain ingredients that can damage the silicone of your device. Please avoid using clay-based, silicone-based or grainy cleansers, exfoliators, or scrubs, as they may damage the device's soft silicone touchpoints. For best results, we recommend using FOREO Micro-Foam Cleanser.

8. CAN I USE LUNA™ 4 go (gen 2) IF I HAVE SKIN CONDITIONS SUCH AS ECZEMA OR IF I HAVE HAD A COSMETIC PROCEDURE SUCH AS BOTOX?

We suggest that anyone who suffers from a serious skin condition or has undergone a cosmetic procedure consults their physician or skincare professional before using the device.

9. CAN I USE MY LUNA™ 4 go (gen 2) DURING PREGNANCY?

Yes, LUNA™ 4 go (gen 2) is safe to use while pregnant or breastfeeding.

10. HOW DO I ADJUST THE INTENSITY OF THE T-SONIC™ PULSATIONS?

LUNA™ 4 go (gen 2) is designed with 8 different cleansing intensities for your selection. Simply use the plus and minus buttons to adjust your cleanse and massage, according to your preferences.

11. HOW DO I ACCESS MESSAGE MODE?

Flip your device to the massage side with silicone ridges. Gently glide the back of the device from the center of your face to the outside of your face, in upward lines. Glide across your cheekbones and forehead, and over your jawline & neck, as desired.

12. WHAT ARE THE DIFFERENCES BETWEEN THE LUNA™ go AND LUNA™ 4 go (gen 2)?

LUNA™ 4 go (gen 2) is bigger in size and has 8 adjustable T-Sonic™ intensities while the original LUNA™ go had only one intensity. The silicone touchpoints are also 17% softer — allowing them to glide even more effortlessly across skin, to preserve its natural elasticity. Upgraded from up to 60 uses to a whopping 300 uses per charge, so you don't have to worry about charging your device mid-trip, or running out of battery mid-cleanse. LUNA™ 4 go (gen 2) also features a new travel-lock option, to make skincare on-the-go as easy as possible - whether you're going to the gym or on vacation.

©2024 FOREO AB. ALL RIGHTS RESERVED.

EU DISTR.: FOREO AB, KARLAVÄGEN 41, 114 31 STOCKHOLM, SWEDEN.

US DISTR.: FOREO INC., 1525 E PAMA LANE, LAS VEGAS, NV 89119, USA.

AUS DISTR.: 6 PROHASKY STREET, PORT MELBOURNE, VIC, 3207 AUSTRALIA.

DESIGNED AND DEVELOPED BY FOREO SWEDEN.

MANUFACTURED FOR FOREO AB.