

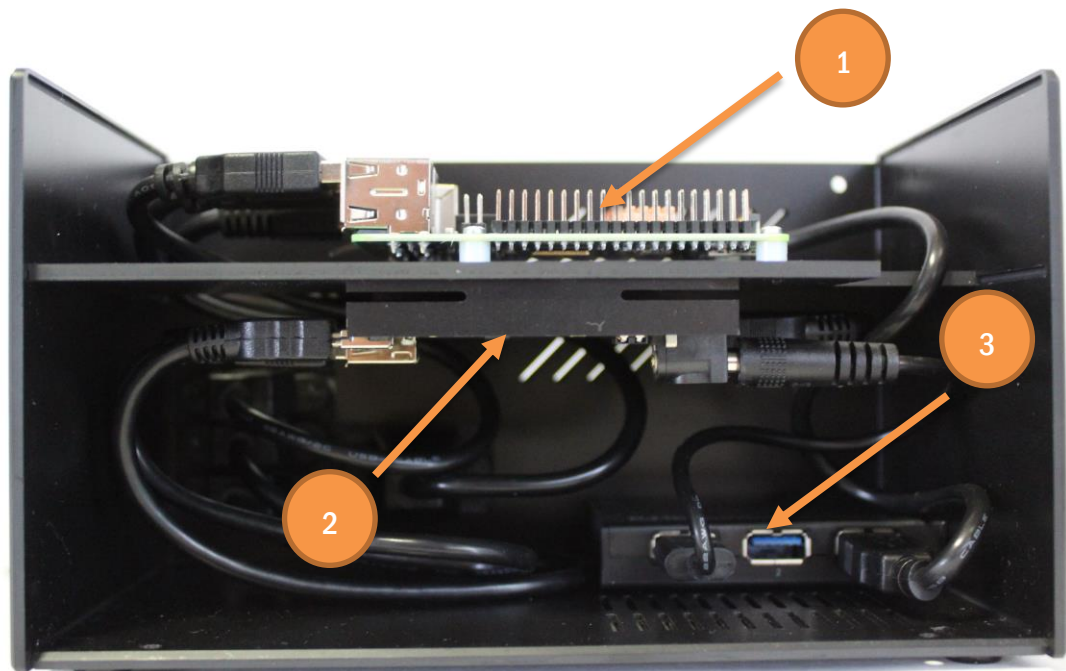
REV-GB/U

FCC

Internal Photos

The following pictures shows the inside of the taprbox. It contains three “devices”:

1. Raspberry Pi 3 Model B+
2. USB Duplicator
3. USB Hub



PPA15 GmbH

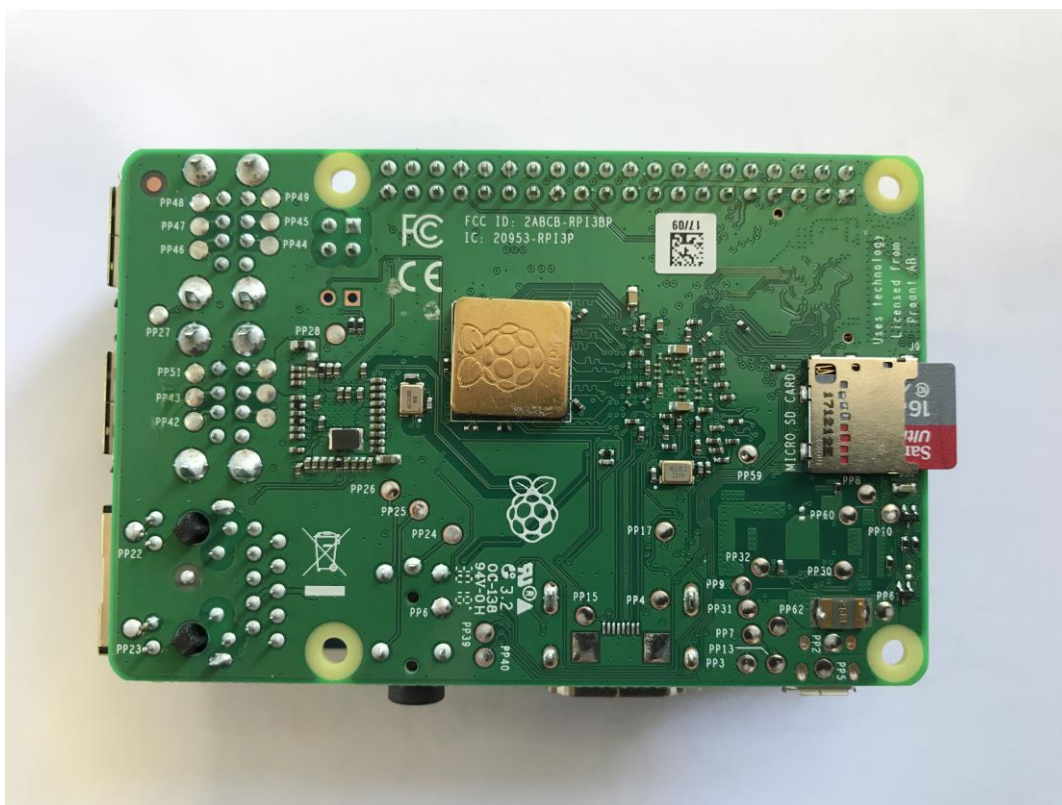
Stollbergstr. 22

80539 München

The following picture shows the “Raspberry Pi 3 Model B+” from the top. On the bottom it is screwed into the black plate.

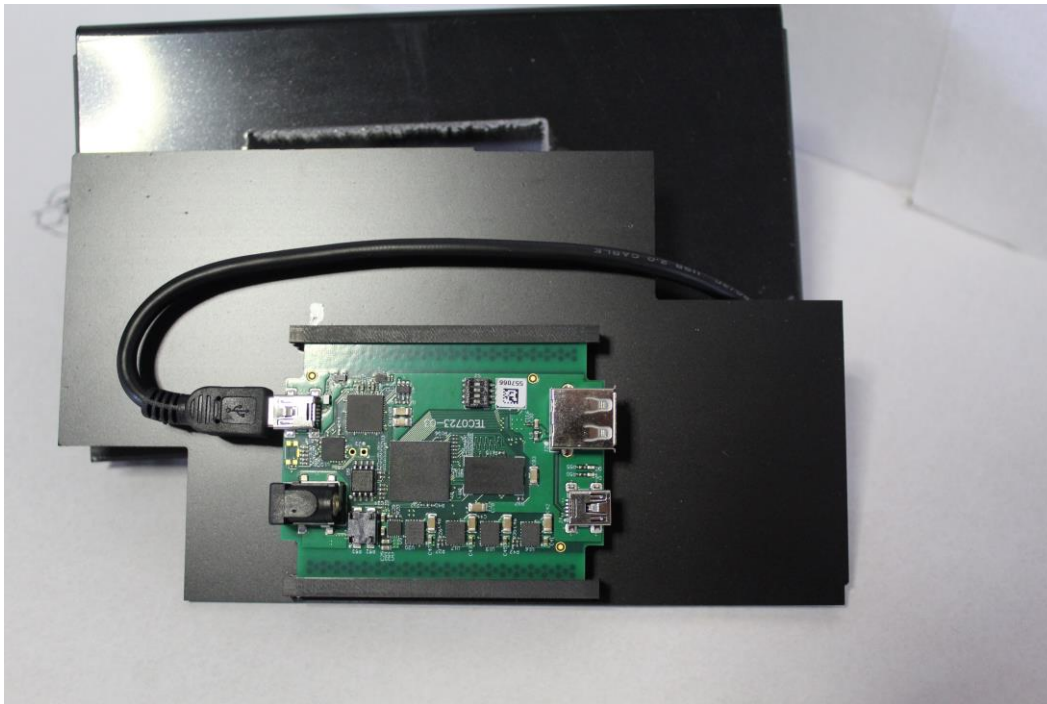


The following picture shows the “Raspberry Pi 3 Model B+” from the bottom.

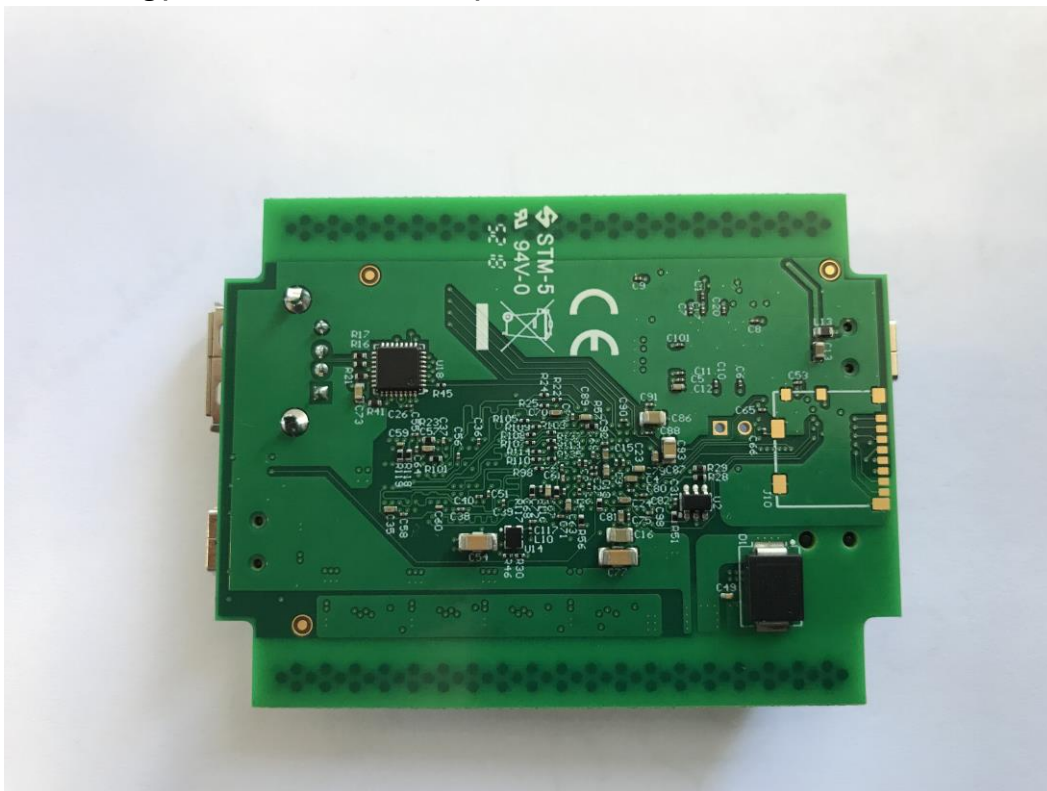


PPA15 GmbH
Stollbergstr. 22
80539 München

The following picture shows the “USB Duplicator” from the top. It is clicked into the plate



The following picture shows the “USB Duplicator” from the bottom.



PPA15 GmbH
Stollbergstr. 22
80539 München

The following picture shows the USB Hub from the top. It is glued on the bottom of the case:



The following picture shows the USB Hub from the bottom.

