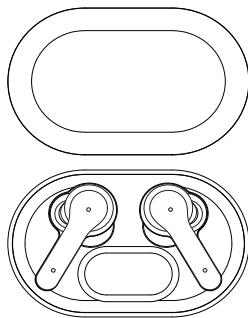


# User Manual

Model: DX-09

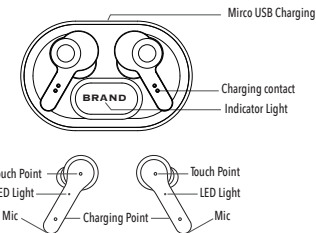


FCC ID: 2AT5KDX-09

Bluetooth earphone

## INSTRUCTIONS

- Play/ Pause
- Music switch
- answer
- hang up
- Touch control
- voice assistant



### 1 / Headphone Specification

- Bluetooth version: JL V5.0
- Speaker impedance: 6MM 32Ω
- Microphone sensitivity: -42Db
- Radio frequency: 2.4GHz
- Battery capacity: 40mAh
- Operating temperature: 10-50°C

- Charging voltage: DC5V
- Transmission distance: 10m
- Play time: about 4 hours
- Charging time: about 1 hour
- Standby time: 100 hours

### 2 / Charging case

- Battery storage: 300 mAh
- Input : 5V 300mA
- Output : 5V 150mA

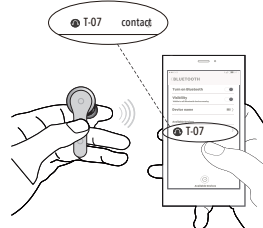
## Basic Function

### Automatic boot:

Open the battery compartment, remove the headset, the headset automatically turns on, and automatically pair within 3 seconds. The left ear is red and blue, The right ear does not flash. The left and right ears are paired successfully. Manual power on: Press and hold the contacts on the left and right ears for 3 seconds, the red light is on, and the power is turned on.

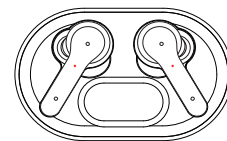
### Headphone connection:

After the headset is automatically paired, turn on the Bluetooth Bluetooth function of the phone and select it in the Bluetooth list. "T-07". After successful pairing with the mobile phone, the connection to the headset service is successful and the handset will be "paired". Successful, connected "Voice prompt". Disconnected to enter the connectionless standby state, headset 5 points Automatically shut down after the clock.



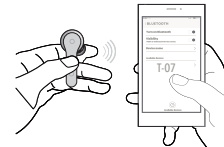
### Shut down:

Put the headset into the battery compartment and the indicator light is red to disconnect and shut down. Press and hold the contact on the left and right ears for 6 seconds to shut down.



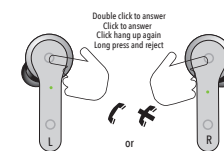
### Automatic connection:

When booting, it will automatically return to the last paired phone.



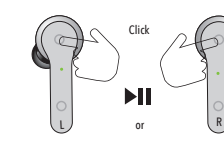
### Answer/Hang up:

Click on the left or right ear to answer the call when you call, click during the answering process. Hang the phone at the touch point above the left or right ear. If you refuse to answer the phone, please press the left or right ear. Upper contact 2 seconds



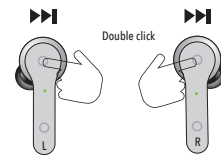
### Pause/play music:

Click on the left ear or the touch point above the right ear while playing music. Pause/play music



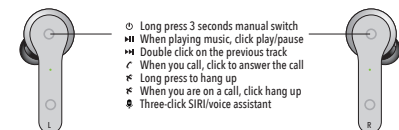
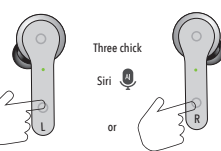
### Music switch:

Double click on the touch point above the left/right ear, the next song



### Voice assistant

Three-click the left or right touch point below the right ear to wake up siri



## Related accessories

Model: T-07  
Wireless headset\*1, charging cable\*1, Manual\*1, Ear caps\*3

## Cautions

- Please do not overuse this earphone or put it under heavy pressure, keep away from wet and heat.
- Keep away from WIFI, router or other high frequency transmitting equipment to prevent interruption of signal receiving.
- Please use this earphone under its working range (10meters), and the effect would be better if there is no obstacle between the connected devices.
- Use this Bluetooth earphone to connect any device with Bluetooth function.
- If you let this headset lie idle long time. Please charge it before you use it!

FCC Warning Statement

Changes or modifications not expressly approved by the party responsible for compliance could void the user's authority to operate the equipment.

This equipment has been tested and found to comply with the limits for a Class B digital device, pursuant to Part 15 of the FCC Rules. These limits are designed to provide reasonable protection against harmful interference in a residential installation. This equipment generates uses and can radiate radio frequency energy and, if not installed and used in accordance with the instructions, may cause harmful interference to radio communications.

However, there is no guarantee that interference will not occur in a particular installation. If this equipment does cause harmful interference to radio or television reception, which can be determined by turning the equipment off and on, the user is encouraged to try to correct the interference by one or more of the following measures:

- - Reorient or relocate the receiving antenna.
- - Increase the separation between the equipment and receiver.
- - Connect the equipment into an outlet on a circuit different from that to which the receiver is connected.
- - Consult the dealer or an experienced radio/TV technician for help.

This device complies with part 15 of the FCC Rules. Operation is subject to the following

two conditions: (1) This device may not cause harmful interference, and (2) this device must accept any interference received, including interference that may cause undesired operation.