

Lattice1 Setup Manual



Step 1:

Plug the power adapter into your Lattice1

Note: Please use the power adapter provided with the Lattice1



Step 2:

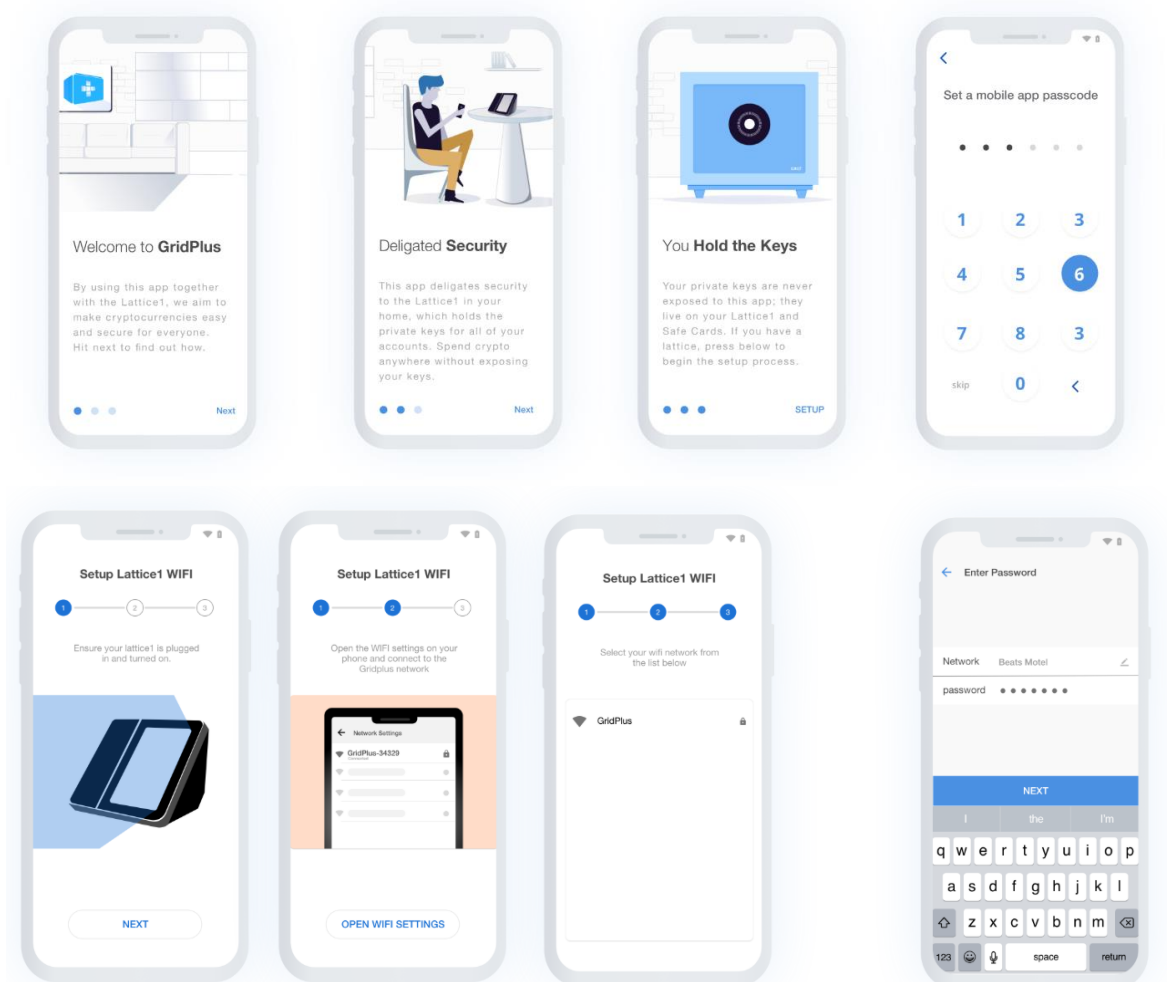
Plug the power adapter into a wall outlet

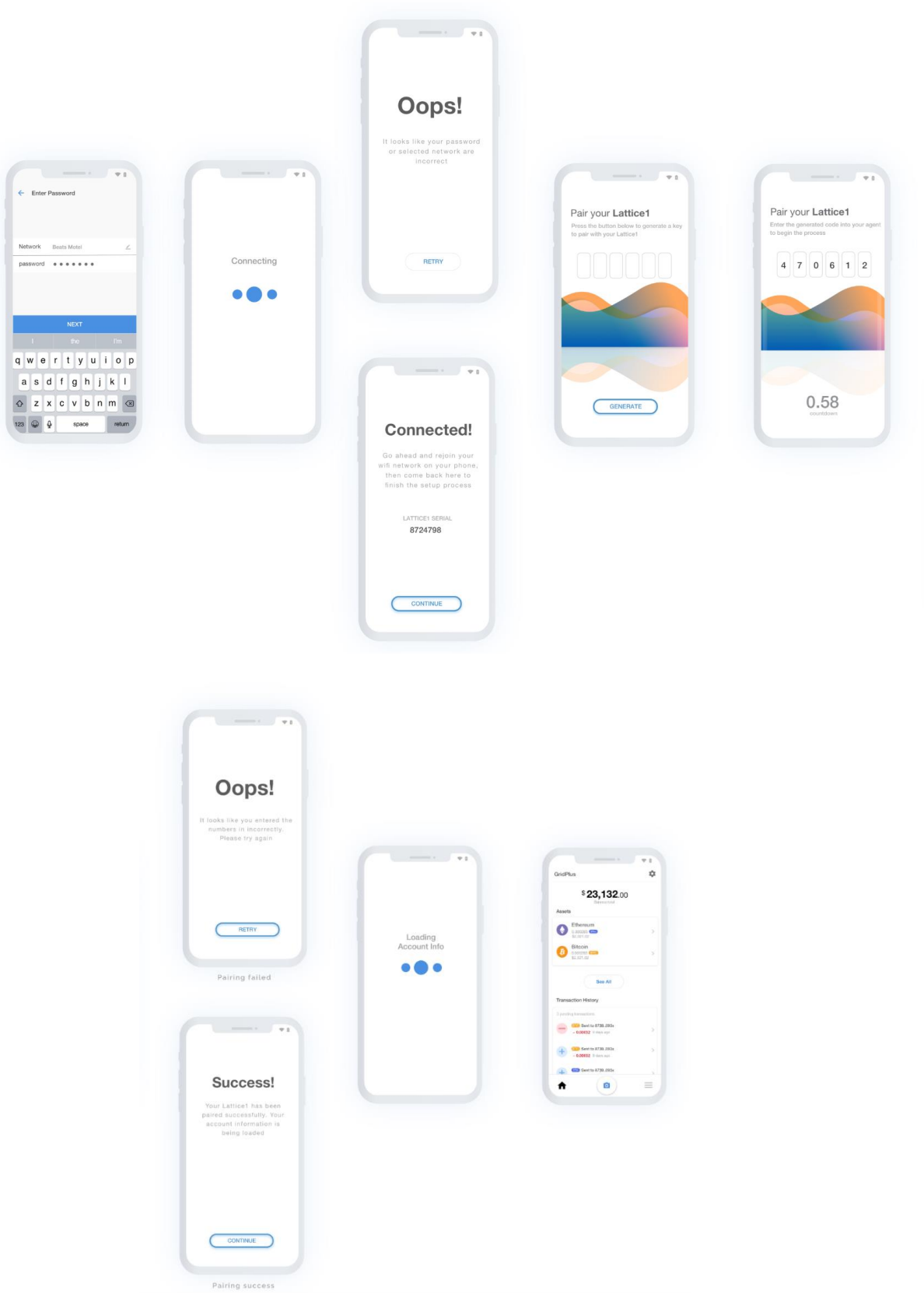
Step 3:

Connect the Lattice1 to WIFI

Download the GridPlus Mobile App from the Apple Store and follow the below instructions.

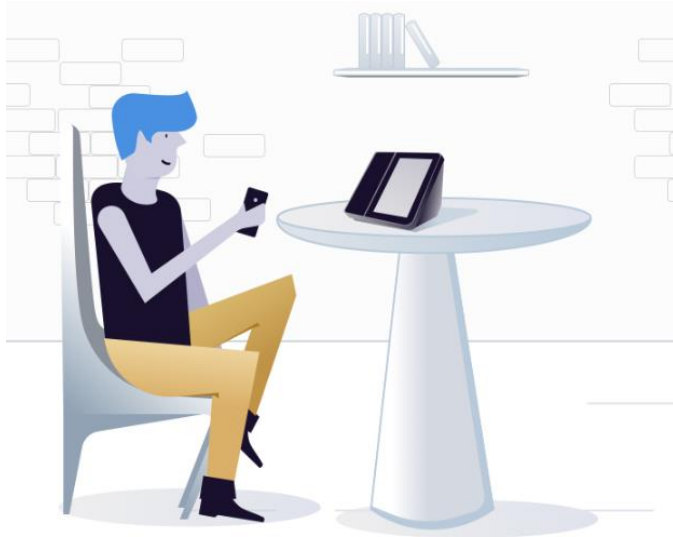
Note: The Lattice1 needs to be connected to the internet to work as intended.





Step 4:

Begin using the Lattice1



Operator's Manual

WARNING: DISASSEMBLY WILL RENDER LATTICE1 UNUSABLE AND MAY RESULT IN LOSS OF FUNDS

GridPlus Inc. reserves the right to modify the content, specifications, and parameters included in this user guide, which is subject to change without prior notice. Due to regular product updates and improvements, certain details present in this manual may not be up to date or match exactly with the product provided.

Please review the product information, regulatory information, health and safety information and instructions available at [Gridplus.io](https://gridplus.io) before using your Lattice1. Additional support information such as the product warranty may also be found on the website.

Introduction

Thank you for purchasing our product. Please ensure that ALL USERS of our products have read this manual and understand its contents prior to using the Lattice1 and SafeCards. Please visit our website, [Gridplus.io](https://gridplus.io), for the most up to date information on our products, software, and any updates to our product manuals.

Unboxing

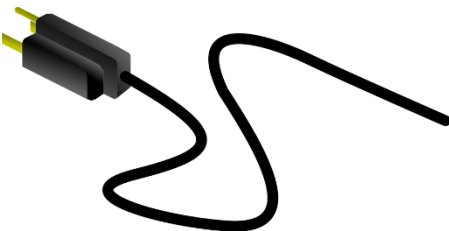
When unboxing your Lattice1, you will find the following items:


Lattice1



The Lattice1 is your digital asset vault, giving users sovereignty over anything stored on the Lattice1.

Power Adapter



AC Power Adapter
Model: TDX-1201000 Input: 100-240V 50/60 Hz 0.5A Output: 12V  1.0A

The Lattice1 should be powered with the provided power adapter.

Ethernet Cord



The Ethernet cord is used to connect to internet without using WIFI.

SafeCard



SafeCards are used to store assets locally. Assets can be moved from card to Lattice1 once the card is inserted, chip facing forward, into the device.

Please refer to the [Setup Manual](#) for instructions for powering the Lattice1 on.

Note: SafeCards are not necessary for use, but can be used as vessels for storing cryptographic tokens.

When opening the Lattice1, please ensure that all components listed in the Setup Manual are received in good condition. Please contact help@gridplus.io if you have any issues. GridPlus Inc. will not accept any returns once the box has been opened.

Front



Touch Screen Display	Main interface of the Lattice1
Card Reader	Port for the insertion of SafeCard (chip facing up)

Rear



Power Port	Charging interface for the Lattice1 and power adapter
Ethernet Port	Port for connecting to the internet if the user is not using WIFI

Safety

Please read all the safety information below before using your Lattice1.

The Lattice1 must be installed and used in strict accordance with the instructions provided in our manual. Tampering or attempting to disassemble the Lattice1 will cause the Lattice1 to render itself unusable, causing all of the stored information to be lost. The Lattice1 must not be dropped, shaken, or hit as this may also trigger the anti-tamper mechanism. The Lattice1 should not be operated in extreme weather conditions as this may cause damage. High temperatures, extreme humidity, dust, or strong magnetic fields may cause damage to the Lattice1. The Lattice1 should only be operated in temperatures between 0-35 degrees Celsius.

The Lattice1 is provided with a built-in battery. Please do not attempt to replace the battery yourself. The Lattice1 has a five-year shelf life. Please dispose of your Lattice1 in accordance to your local regulations.

When cleaning the Lattice1, please use a soft, dry cloth. Never use corrosive detergents to clean the Lattice1. As the Lattice1 is an electronic device, exposure to liquid may cause short circuiting or damage to the Lattice1 and surrounding area.

The Lattice1 must be powered using the adapter which is provided. Third party power adapters may lead to the Lattice1 malfunctioning and causing injury to the user or the surrounding area.

The Lattice1 should only be used with GridPlus Inc. accessories. Use of third-party accessories may cause loss of assets or damage to the Lattice1.

PLEASE OBEY ALL POSTED SIGNS TO TURN OFF WIRELESS DEVICES. DO NOT USE THE LATTICE1 IN AREAS WHERE POSTED SIGNS PROHIBIT USE.

DO NOT:

- Use your Lattice1 in areas of high humidity, such as bathrooms. Doing so may result in electric shock, injury, fire, or power adapter damage.
- Use your Lattice1 in hospital operating rooms, emergency rooms, or intensive care units. Please consult your doctor and the medical device manufacturer to determine if operation of the Lattice1 may interfere with the operation of your device. To avoid potential interference with a pacemaker, ensure a minimum distance of 15 cm between the pacemaker and the Lattice1.
- Use your Lattice1 in potentially explosive environments including fueling areas, below decks on boats, fuel or chemical transfer or storage facilities, areas where the air contains chemicals or particles, such as grain, dust or metal powders.



Correctly dispose of this product. This marking indicates that this product should not be disposed with other household wastes throughout the EU. To prevent possible harm to the environment or human health from uncontrolled waste disposal, recycle responsibly to promote the sustainable reuse of material resources. To safely recycle your Lattice1, please use return and collection systems.

The Lattice1 has been tested and meets applicable limits for radio frequency (RF) exposure.

Specific Absorption Rate (SAR) refers to the rate at which the body absorbs RF energy. The SAR limit is 1.6 watts per kilogram in countries that set the limit averaged over 1 gram of tissue and 2.0 watts per kilogram in countries that set the limit averaged over 10 grams of tissue.

FCC Compliance Statement:

Note on interference in a residential installation.

This device has been tested and found to comply with the limits for a Class B digital device, pursuant to part 15 of the FCC Rules. These limits are designed to provide reasonable protection against harmful interference in a residential installation. The device generates, uses and can radiate radio frequency energy and, if not installed and used in accordance with the instructions, may cause harmful interference to radio communications. However, there is no guarantee that interference will not occur in a particular installation. If the device does cause harmful interference to radio or television reception, which can be determined by plugging in, then unplugging, the device, the user is encouraged to try to correct the interference by reorienting or relocating the receiving antenna and/or consulting the dealer or an experienced radio/TV technician for help.

The device complies with part 15 of the FCC Rules. Operation is subject to the following two conditions: (1) the device may not cause harmful interference, and (2) this device must accept any interference received, including interference that may cause undesired operation.

Changes or modifications not expressly approved by the party responsible for compliance could void the user's authority to operate a device or the warranty.

ISED Canada Compliance Statement:

This device complies with ISED Canada license-exempt RSS standard(s). Operation is subject to the following two conditions: (1) this device may not cause interference, and (2) this device must accept any interference, including interference that may cause undesired operation of the device

Le présent appareil est conforme aux CNR d'Industrie Canada applicables aux appareils radio exempts de licence. L'exploitation est autorisée aux deux conditions suivantes : (1) l'appareil ne doit pas produire de brouillage, et (2) l'utilisateur de l'appareil doit accepter tout brouillage radioélectrique subi, même si le brouillage est susceptible d'en compromettre le fonctionnement.

Device information can be found via the following path:

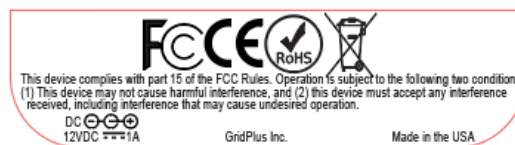
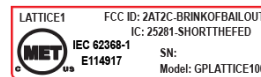
1. Home
2. Settings
3. Device Info

Model: GPLATTICE100

FCC ID: 2AT2C-BRINKOFBAILOUT- Found on the back of your Lattice1



Placeholder for FCC and IC ID





Placeholder for labeling on the box



©GridPlus Inc. All rights reserved. The Lattice1 and SafeCards are trademarks of GridPlus Inc. The Lattice1 is proudly designed and manufactured in the United States.