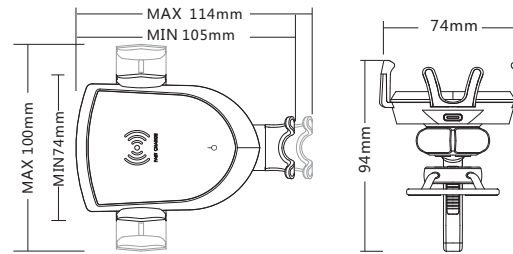
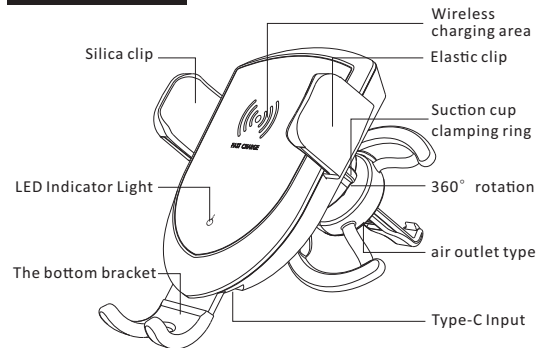


Automatic Induction & Wireless car charger bracket User Manual

Thanks for purchasing and using this product !

In order to make you have better using experience, pls read this manual and also your smartphone manual

Product Profile



Product parameters

- Material: ABS+PC
- Working frequency: 110-205KHZ
- Max power: 10W
- Inductive distance: ≤10mm
- Product weight: 80g
- Input: DC 5V/2A 9V/1.67A
- Working temperature: -10°C - 60°C
- Conversion efficiency: 60%-75%
- Product size: 105*74*94mm
- Input Port: Type-C

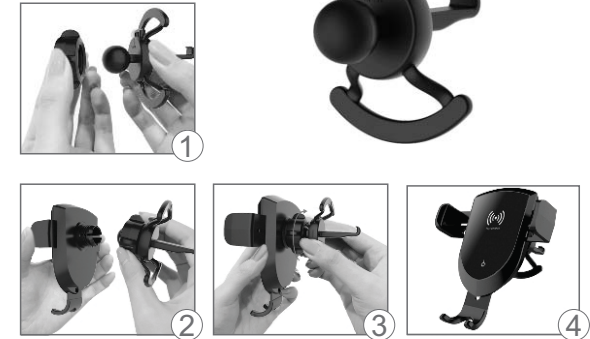
[Contents:]

- ① Wireless car charger bracket
- ② 1m Type-C charge cable
- ③ 3M glue type or suction type
- ④ User manual

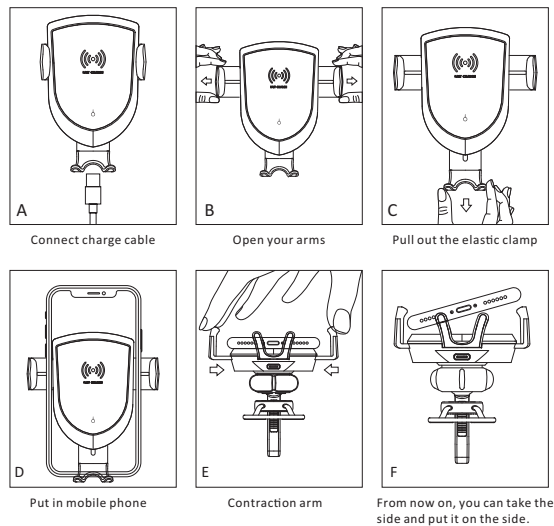
[Qi device, compatible widely]

Compatible with all kinds of Qi standard phones, including, iPhone 8/8P/X, Samsung Note 8/7/5 Samsung S8+/8/7 edge/7/6 edge/6, LG10/G3/G2, Google Nexus6/5/4 Nokia Lumina820/830/920 etc.

Combination



Applicable steps



Method of operation

1. Pls choose proper fix method to install the product in your car and adjust best vision, pls use the attached data charge cable to connect product for wireless product.
2. When Type-C connected successfully, LED light green, it will light blue when receive wireless phone charging.
3. LED will light up when excessive flow or foreign matters etc. errors happen and it will not allow to charge. When trouble occurs, don't insert the charging line into the Type-C.
4. When the handset needs to be clamped, please move the mobile phone to the 10-25mm above the mount. The mount automatically opens the clip, and the mobile phone is easily put into the mount. The clip automatically retracts the handset if you need to take your handset, touch the on-off switch on both sides of the mount. The clips are opened automatically and handset can be taken out.
5. The product does not include wireless charging receiver for phones. Pls purchase Android/Apple wireless charging receiver if your phone does not support wireless receiving function.

Attention

- Please carefully handle your charger and accessories, below suggestions will help you to use warranty service effectively. Pls keep device dry.
- Water may include minerals which will corrode circuit, pls dry the product and clean when it is wet.
- Please choose high quality QC 2.0 or QC3.0 charger, improper charger may have risk.
- Please do not charge exposed battery, or damage battery box, do not store device in wet or high temperature place.
- When device temperature increased to normal value, water will be produced and damage electronics, do not try to open the unauthorized device, or it will damage device or wireless charging devices.
- Does not throw, knock and shock device.
- Do not use or store device in dust or dirty place.
- Some parts of this device are made of magnetic materials and metal materials, do not use bank card, credit card or other magnetic product to close it, or it will make the storage data lost and demagnetizing.

Kindly reminding: Do not play phone when driving !



FCC Statement

This equipment has been tested and found to comply with the limits for a Class B digital device, pursuant to Part 15 of the FCC Rules. These limits are designed to provide reasonable protection against harmful interference in a residential installation. This equipment generates uses and can radiate radio frequency energy and, if not installed and used in accordance with the instructions, may cause harmful interference to radio communications. However, there is no guarantee that interference will not occur in a particular installation. If this equipment does cause harmful interference to radio or television reception, which can be determined by turning the equipment off and on, the user is encouraged to try to correct the interference by one or more of the following measures:

- Reorient or relocate the receiving antenna.
- Increase the separation between the equipment and receiver.
- Connect the equipment into an outlet on a circuit different from that to which the receiver is connected.
- Consult the dealer or an experienced radio/TV technician for help.

This device complies with part 15 of the FCC Rules. Operation is subject to the following two conditions:(1) This device may not cause harmful interference, and (2) this device must accept any interference received, including interference that may cause undesired operation.

Any Changes or modifications not expressly approved by the party responsible for compliance could void the user's authority to operate the equipment.