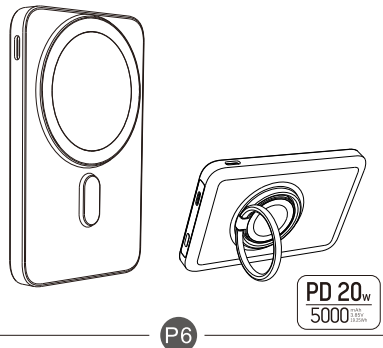


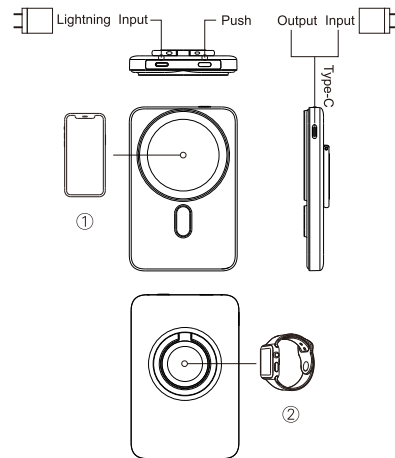
USER MANUAL

3in1 Power bank wireless charger Single ring

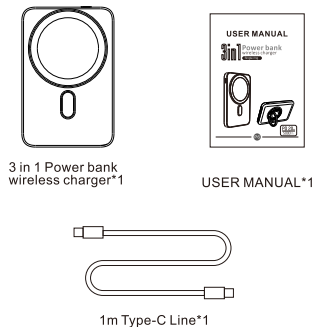


Thanks for choosing Us!

This is a wireless charger for smart phone/iWatch /AirPods, allows you enjoy the fun of digital productseasily. Please read this manual carefully beforeusing the product, and keep properly for checking.



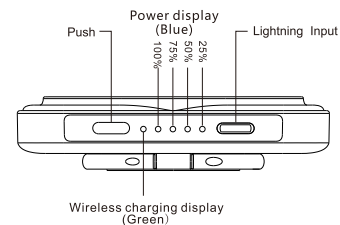
► Standard Accessories



► Specification

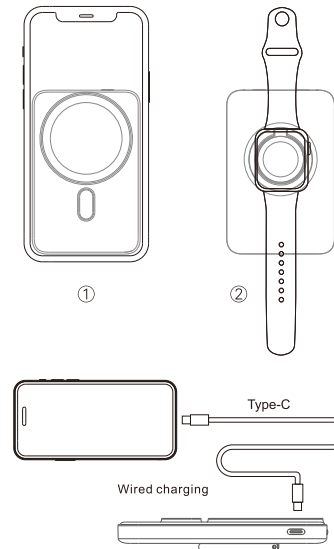
Name:	3 in 1 Power Bank
Capacity:	5000mAh/3.85V 19.25Wh
Lightning Input:	5V=2A
Type-C Input:	5V=3A 9V=2A 12V=1.67A
Type-C Output:	5V=3A 9V=2A 12V=1.67A
Wireless charger :	①15W(max) ②3.5W(max)
Weight:	145g
Dimensions:	68*104*16mm

► Led



1. Press the button and all indicator lights will light up.
2. Put on your phone or watch, the green light is always on, And the four blue battery indicator lights also light up.
3. The battery indicator light is less than 25% The indicator light flashes.
4. Over current, over voltage, over discharge, Short circuit protection

► Usage method



FCC WARNING

This device complies with part 15 of the FCC Rules. Operation is subject to the following two conditions: (1) this device may not cause harmful interference, and (2) this device must accept any interference received, including interference that may cause undesired operation.

Any changes or modifications not expressly approved by the party responsible for compliance could void the user's authority to operate the equipment.

NOTE: This equipment has been tested and found to comply with the limits for a Class B digital device, pursuant to Part 15 of the FCC Rules. These limits are designed to provide reasonable protection against harmful interference in a residential installation. This equipment generates, uses and can radiate radio frequency energy and, if not installed and used in accordance with the instructions, may cause harmful interference to radio communications.

However, there is no guarantee that interference will not occur in a particular installation. If this equipment does cause harmful interference to radio or television reception, which can be determined by turning the equipment off and on, the user is encouraged to try to correct the interference by one or more of the following measures:

- Reorient or relocate the receiving antenna.
 - Increase the separation between the equipment and receiver.
 - Connect the equipment into an outlet on a circuit different from that to which the receiver is connected.
 - Consult the dealer or an experienced radio/TV technician for help.
- The device has been evaluated to meet general RF exposure requirement. The device can be used in portable exposure condition without restriction



128g双铜单黑印刷