

alpha

User Manual



Intelligent Share· Relieved Life

Model: SP300

► Contents

FCC Statement

This equipment has been tested and found to comply with the limits for a Class B digital device, pursuant to part 15 of the FCC Rules. These limits are designed to provide reasonable protection against harmful interference in a residential installation. This equipment generates, uses and can radiate radio frequency energy and, if not installed and used in accordance with the instructions, may cause harmful interference to radio communications. However, there is no guarantee that interference will not occur in a particular installation. If this equipment does cause harmful interference to radio or television reception, which can be determined by turning the equipment off and on, the user is encouraged to try to correct the interference by one or more of the following measures:

- Reorient or relocate the receiving antenna.
- Increase the separation between the equipment and receiver.
- Connect the equipment into an outlet on a circuit different from that to which the receiver is connected.
- Consult the dealer or an experienced radio/TV technician for help.

Caution: Any changes or modifications to this device not explicitly approved by manufacturer could void your authority to operate this equipment.

This device complies with part 15 of the FCC Rules. Operation is subject to the following two conditions: (1) This device may not cause harmful interference, and (2) this device must accept any interference received, including interference that may cause undesired operation.

RF Exposure Information

This equipment complies with FCC radiation exposure limits set forth for an uncontrolled environment. This equipment should be installed and operated with minimum distance 20cm between the radiator and your body.

P1—P2

Hardware introduction

P3

Prepare the door and check dimensions

P4

Parts list

P5—P15

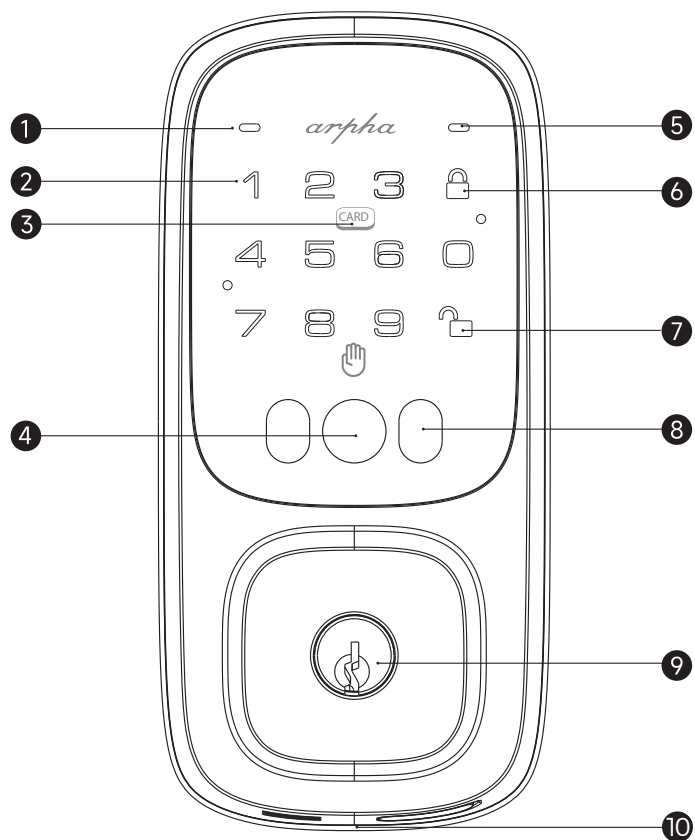
Installation overview

P16—P22

Programming instructions

► Overview

Model: SP300

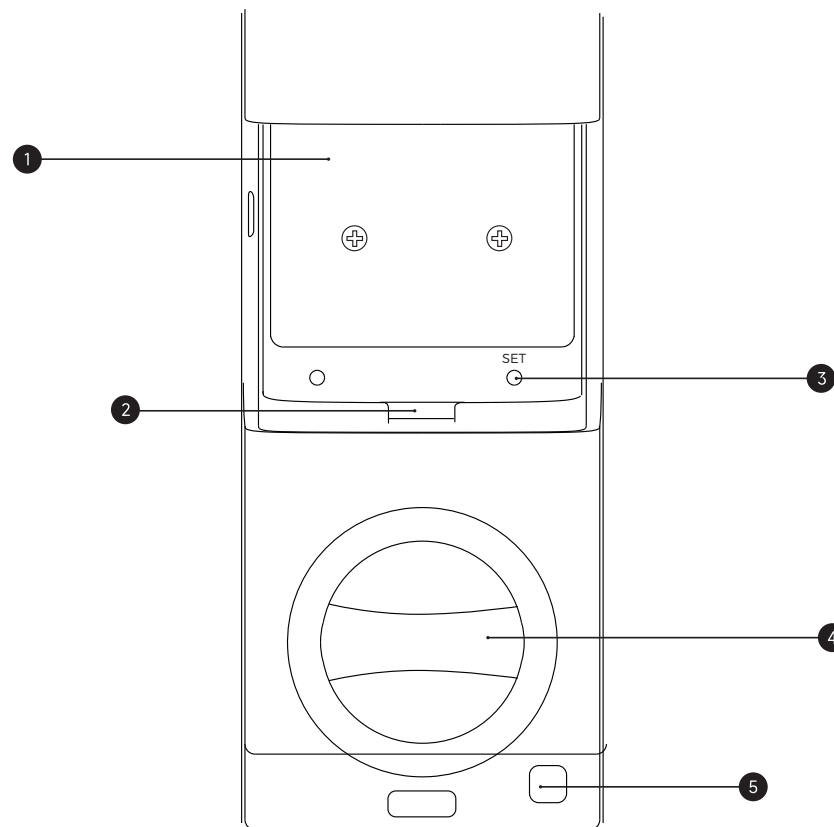


- ① Green Status Light: Succeed(Door Unlock).
- ② Touch Keypad
- ③ Fob Scanner
- ④ Palm Vein Scanner
- ⑤ Red Status Light: Abnormal status detected.
- ⑥ Lock Button: Press this button to lock the door.
- ⑦ Unlock Button: After input the right password, press this button to unlock the door.
- ⑧ Fill Light: When the palm vein is activated, the fill light lights up.
- ⑨ Keyhole
- ⑩ Emergency Power Supply Port: For emergency use only.

Note: The “Emergency Power Supply Port” is not for battery charging purpose and can only be used for emergency power supply to the lock.

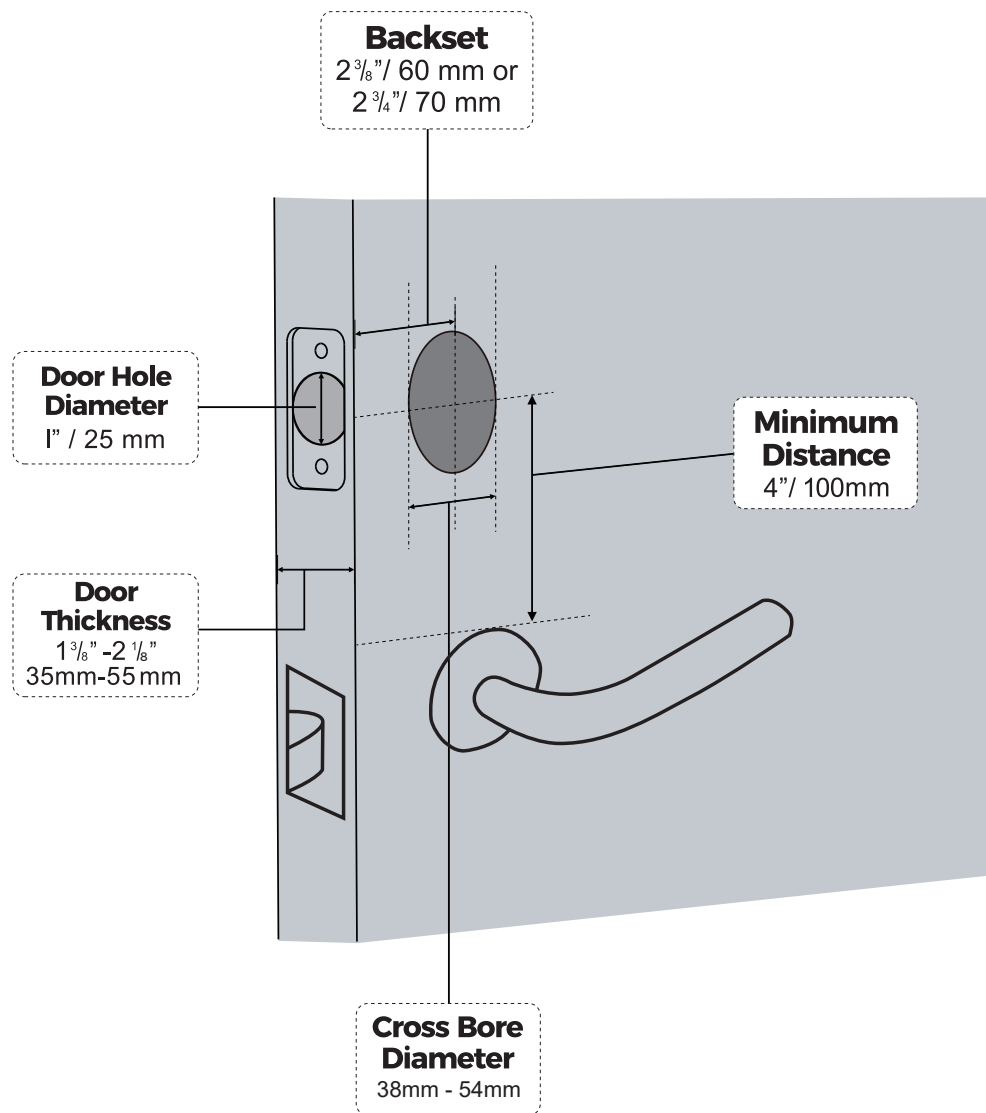
► Arpha Palm Vein Smart Lock

Model: SP300



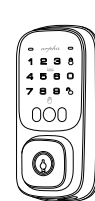
- ① Rechargeable Lithium Battery
- ② Charging Port
- ③ Set Button
- ④ Manual Lock/Unlock Knob
- ⑤ Lock & Unlock Button

► Compatible Doors



► Arpha Palm Smart Lock

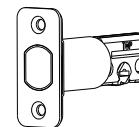
Parts List



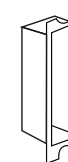
Exterior Assembly



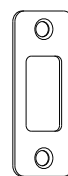
Interior Assembly



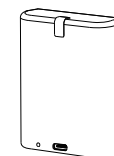
Latch



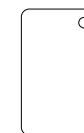
Strike Box



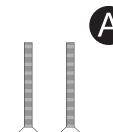
Strike



Battery



Fob Card



Mounting plate
Screws (x2) 40 mm

B



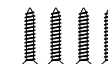
Interior Assembly
Screws (x2) 17 mm

C



Interior Assembly
Screws (x2) 5 mm

D

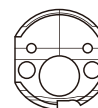


Strike Screws
(x4) 25mm

E



Mounting plate
Screws (x2) 30 mm



38mm spacer



Keys (x2)



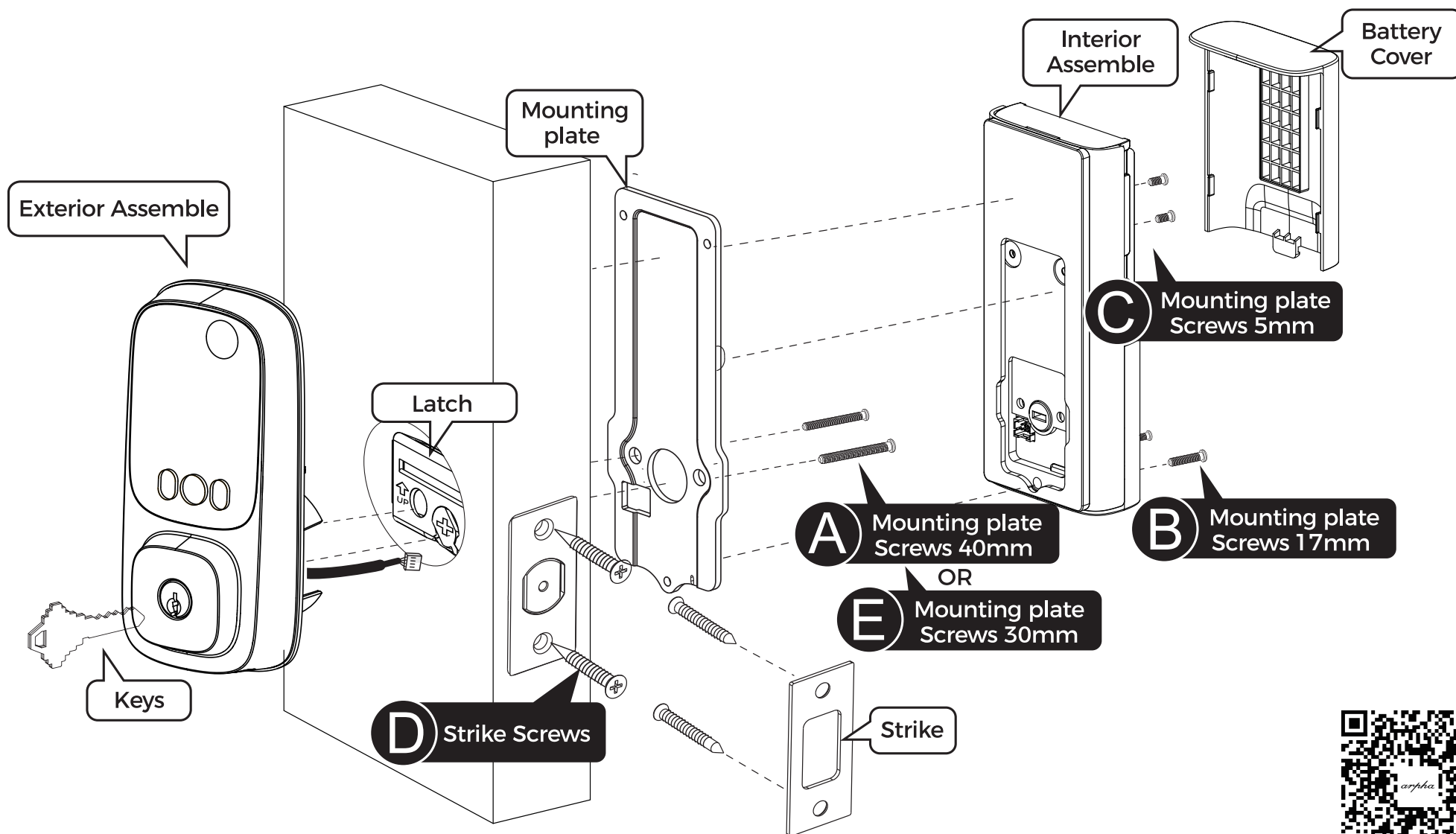
TOOL REQUIRED

All you need is a manual screwdriver or an electronic screwdriver.



IMPORTANT

Do not load batteries until lock is completely installed.



*45-55mm door thickness use A

*35-45mm door thickness use E

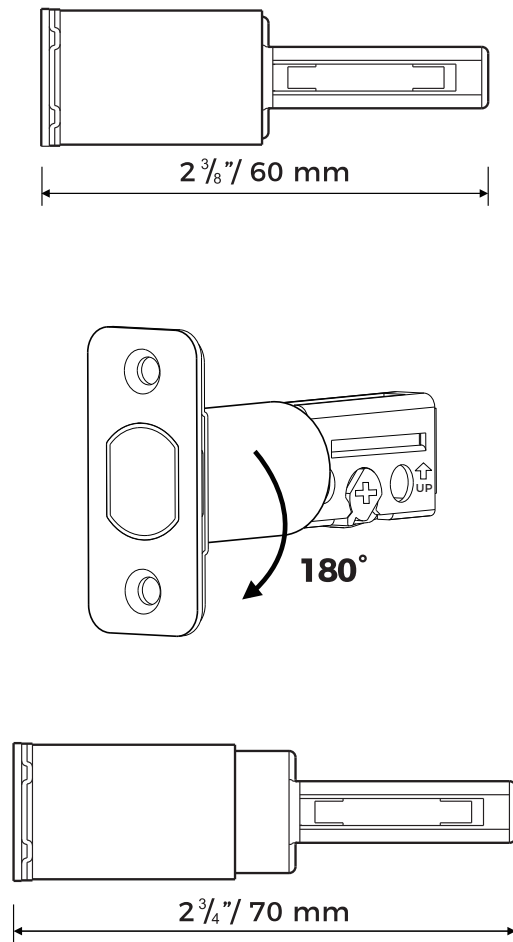


Scan the QR code to watch the video of installation guide

► Step 1. Install Deadbolt

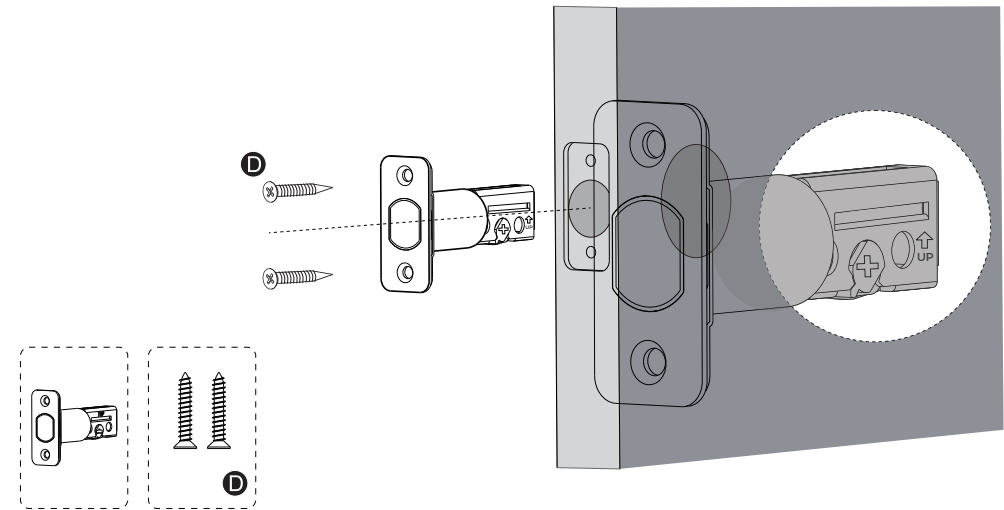
1. Check your door to see if the deadbolt requires adjustment.

If the backset is 70mm, turn the faceplate 180° to extend the length.

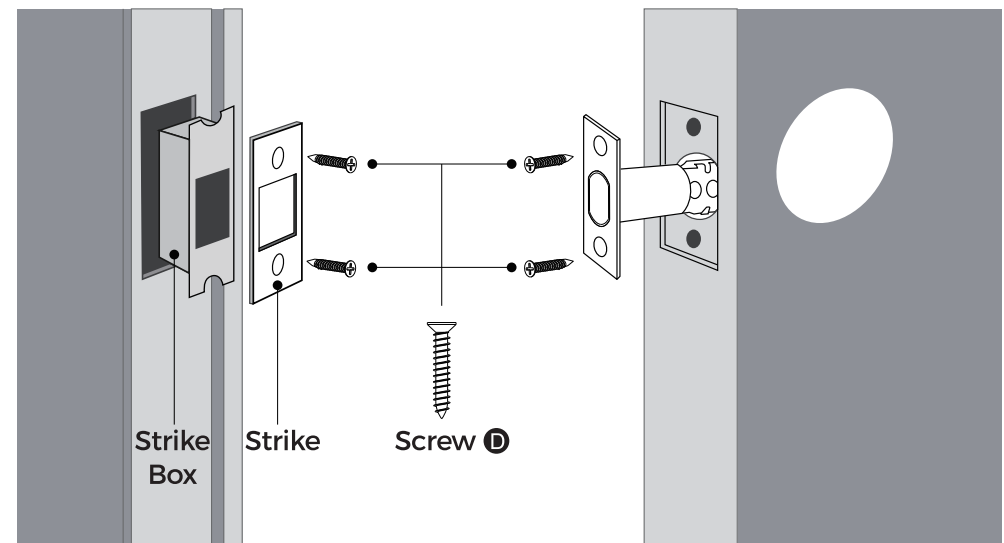


2. Insert and screw the deadbolt into the doorframe.

Make sure the word "UP" on the deadbolt faces up.

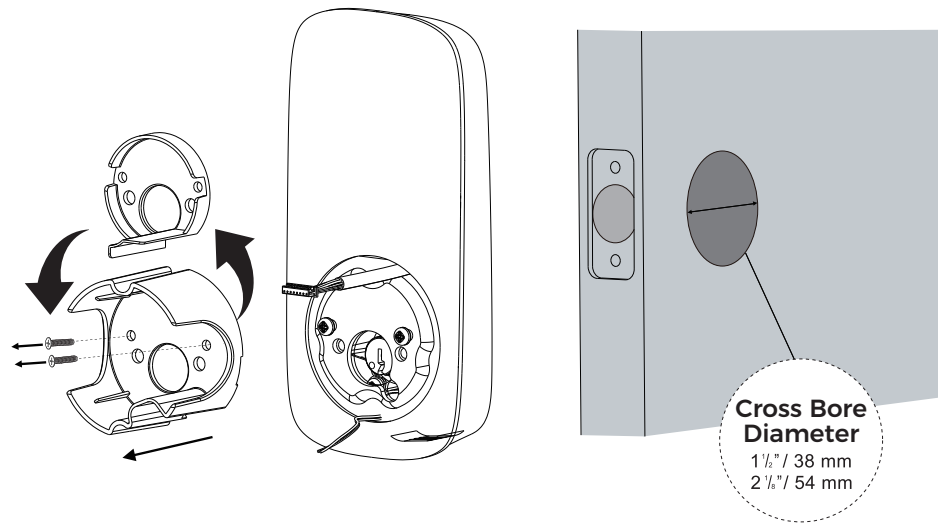


► Step 2. Install Strike Plate



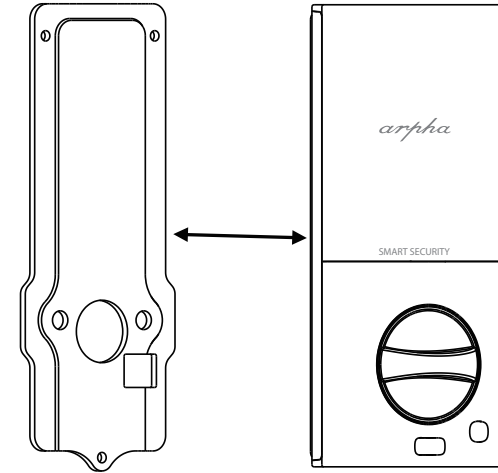
► Step 3. Install Exterior Assembly

If you have a 38mm cross bore, replace the spacer before installation.

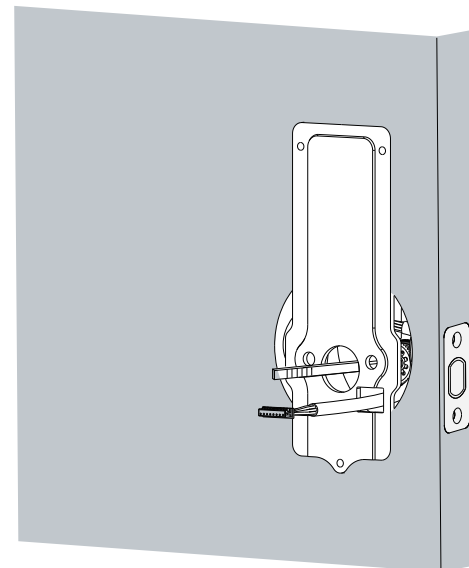
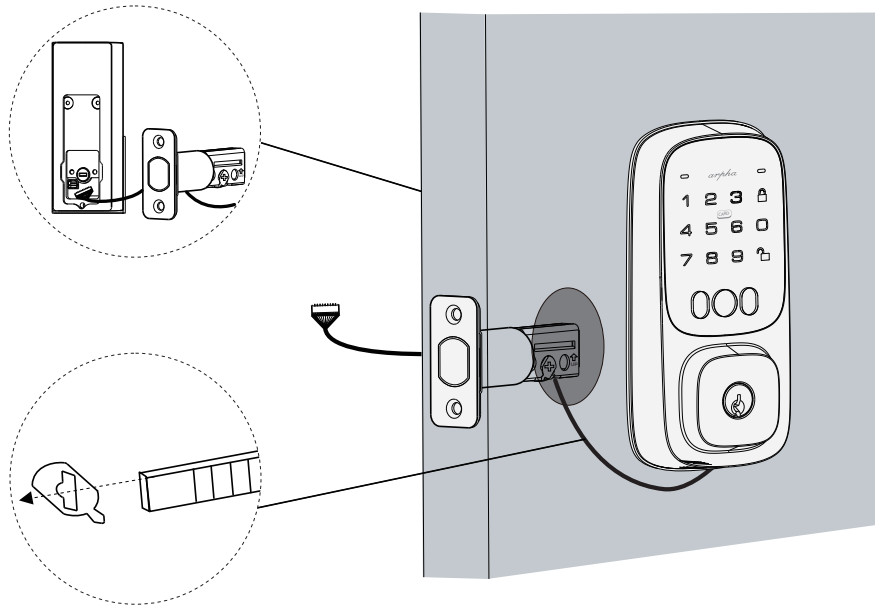


► Step 4. Install Interior Assembly

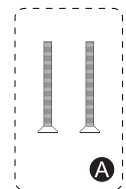
1. Detach the back cover from the interior assembly.



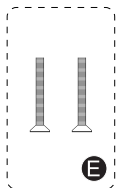
2. Run the wires through the back cover.



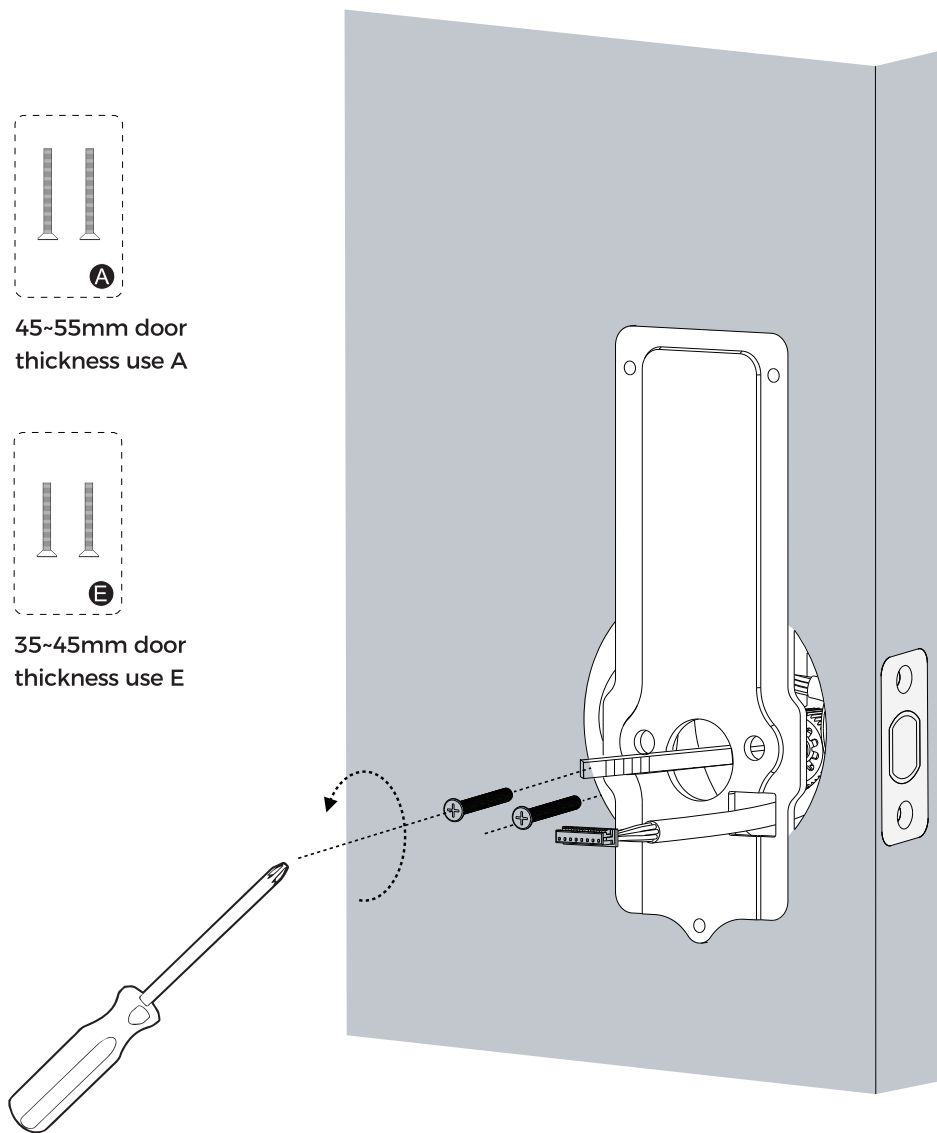
3. Secure the back cover with screws.



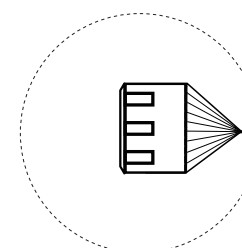
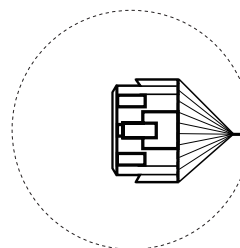
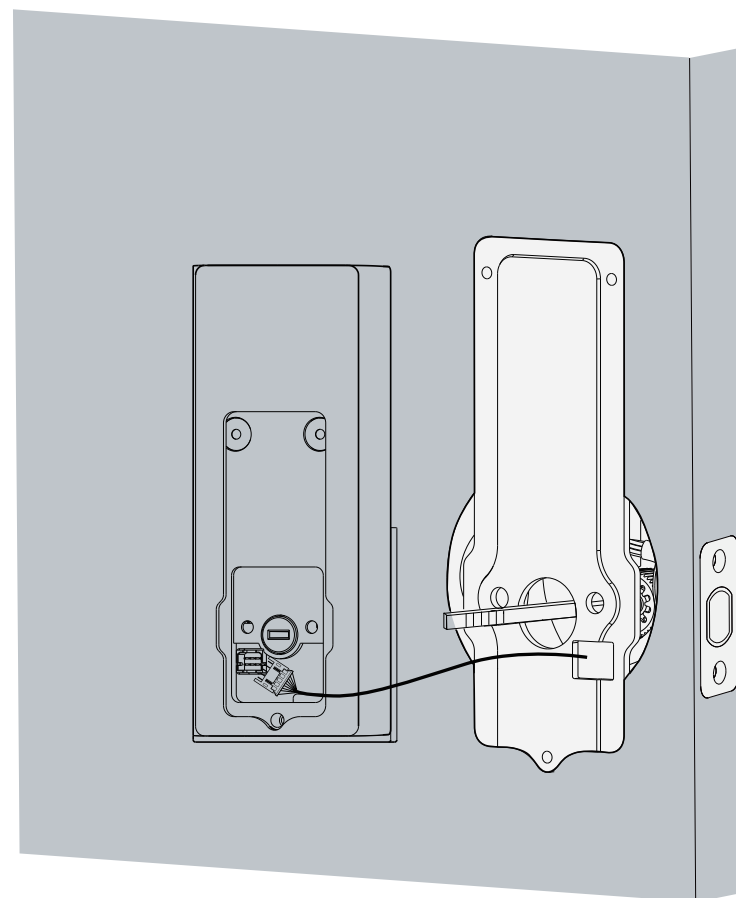
45-55mm door
thickness use A



35-45mm door
thickness use E

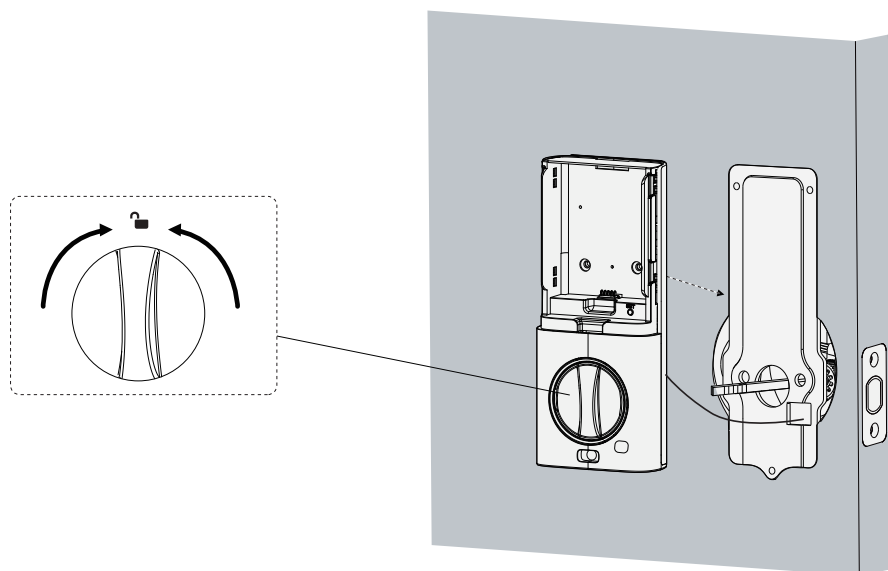


4. Wire to the interior assembly.

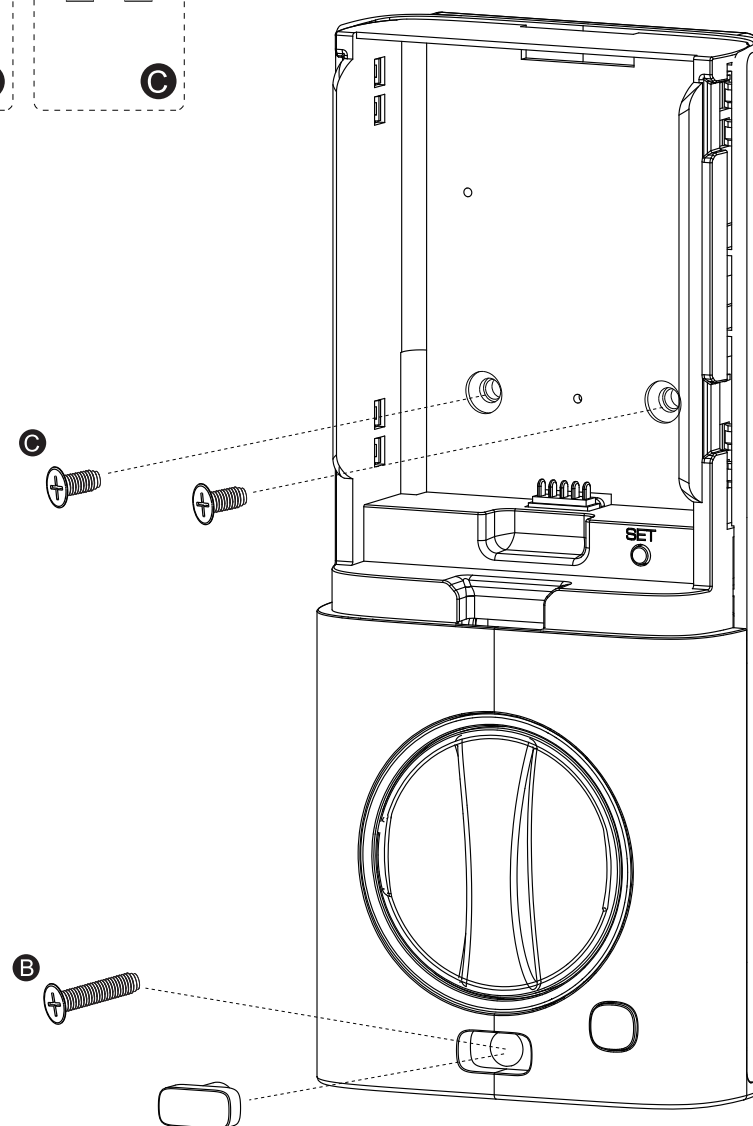
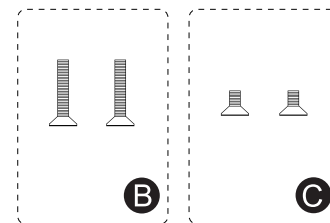
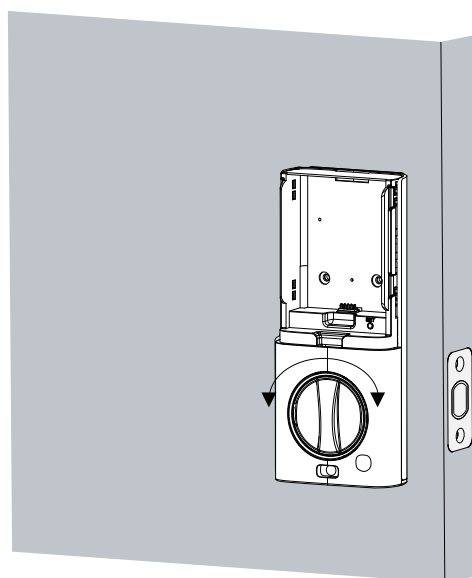


Upside Down

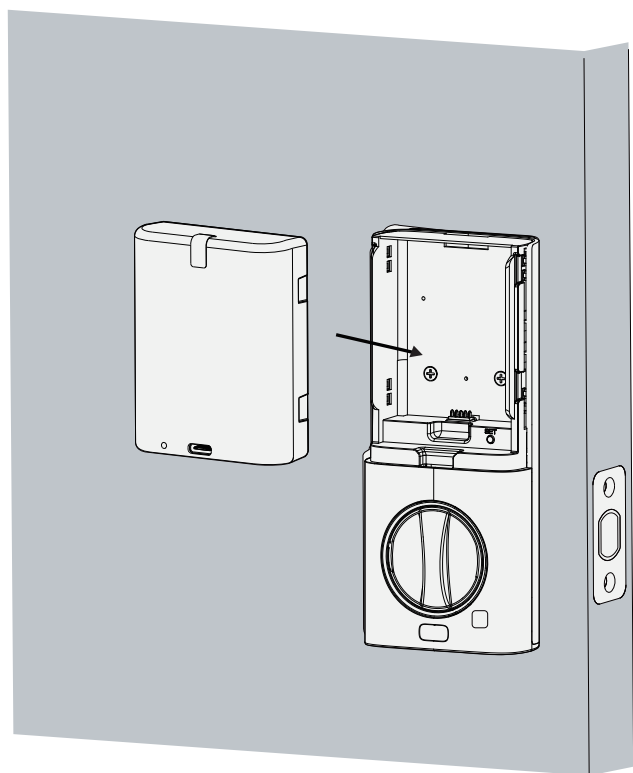
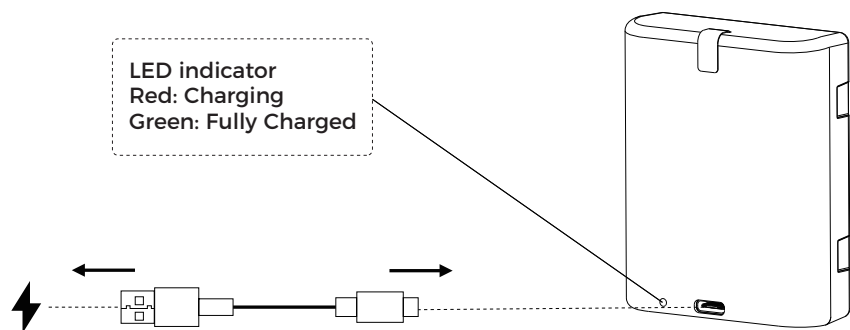
6. Mount the interior assembly. Make sure both wires are tucked into the cabin on the back of the interior assembly.



7. Check if the deadbolt retracts by turning the thumbturn.

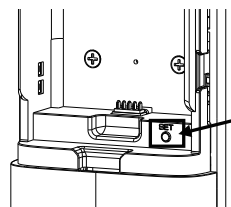


8. Fully charge the battery before first use. It might take about 6 hours.



► Operation on Keypad Door Lock

1. Restore Factory Settings



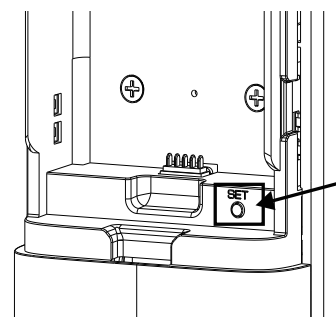
Step1: Press and hold "setting" button, and after 4 seconds, the lock will start emitting a "beep" sound (7 times).

Step2: Hold the button until you hear the voice prompt: To confirm, Please press the "●" button



Step3: You will hear the voice prompt: Factory reset succeeded.
Attention: When the door lock is reset, any password (6-8 digits), any palm vein, and any Fob card can unlock the door. If you want to change this setting simply register an administrator password.

2. Set Administrator Password

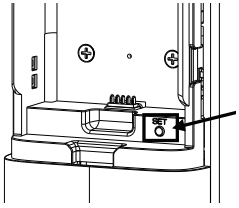


Step1: Press the "SET" button. If no administrator password has been set before, you will hear a voice prompt: Please set the administrator password.

Step2: After input the administrator password, press the "●" button to confirm.

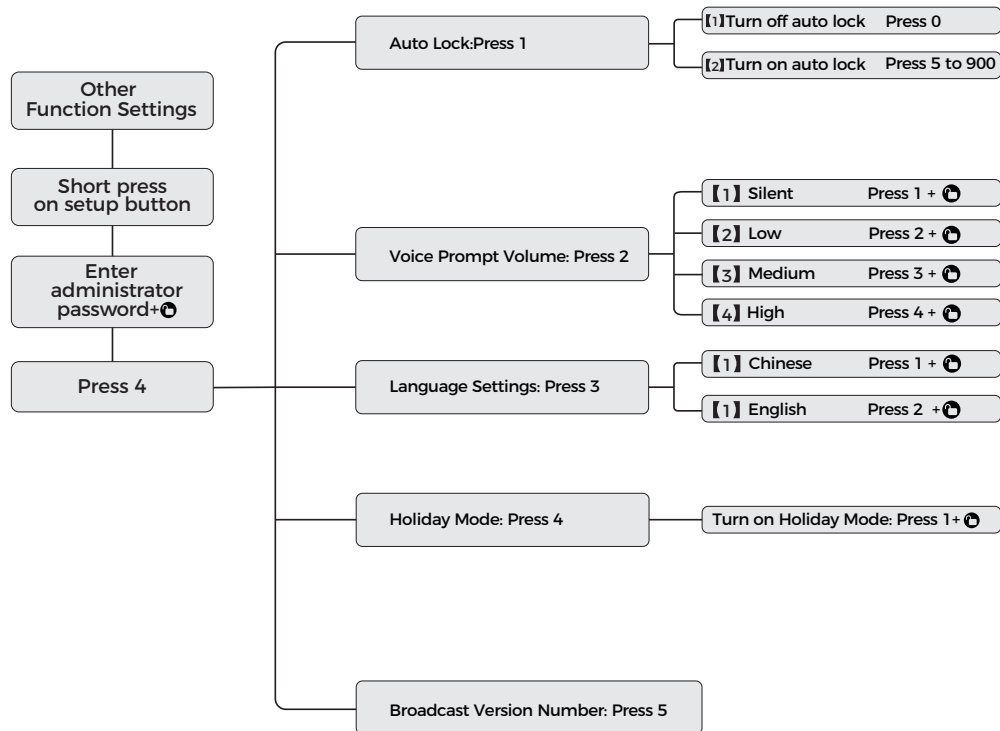
Step3: Follow the voice prompt instructions, enter the administrator password again, and press the "●" button to confirm.

3. Enter The Function Settings Mode



Step1: Press the "Settings" button. You will hear a voice prompt saying, "Please verify administrator user." Enter the correct administrator password, then press the " " button to confirm. If the password verification is successful, you will enter the setting mode.

4. Setting Mode Function List



5. Vacation Mode



When you need to go on vacation for an extended period, you can set the door lock to vacation mode. In this mode, the door lock will disable some functions and reduce response speed to minimize power consumption and prevent the battery from draining during long periods of inactivity.

Exiting Vacation Mode:

Add long press unlock button (front lock) 3~5S, prompting please verify the administrator password. Enter the code to unlock the door normally then the lock returns to automatically close the vacation mode. Or remove the battery and reinstall it, the lock will also automatically turn off vacation mode.

6. Permanent Unlock Mode

Once the Permanent unlock mode is activated, the door lock will no longer automatically lock until it is manually locked or the lock button is pressed to lock it.

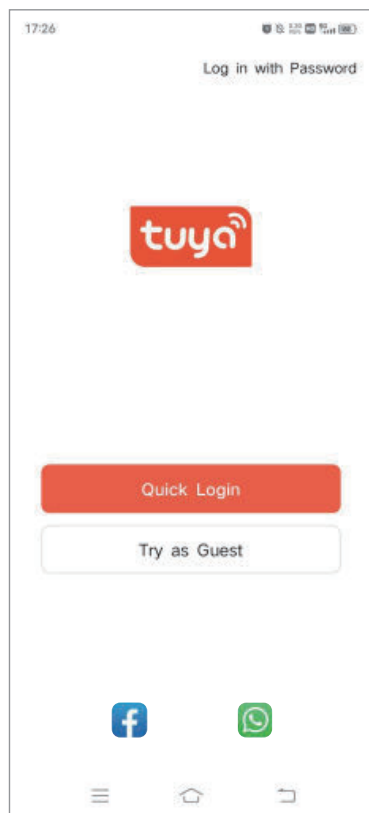
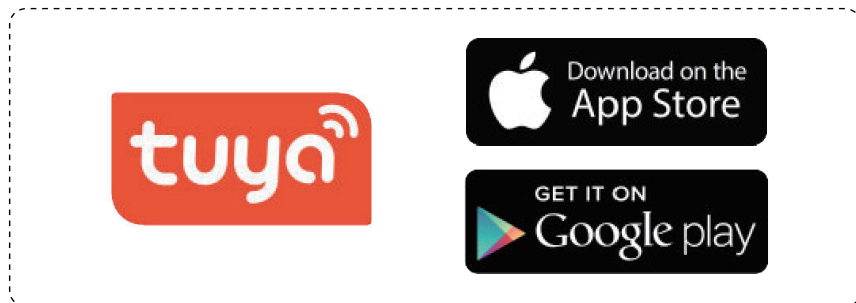
Note: When manually locking or pressing the lock button to lock, the system will automatically exit the constant unlock mode.

Enter Path: Setting Mode → Press [4] → Press [0]

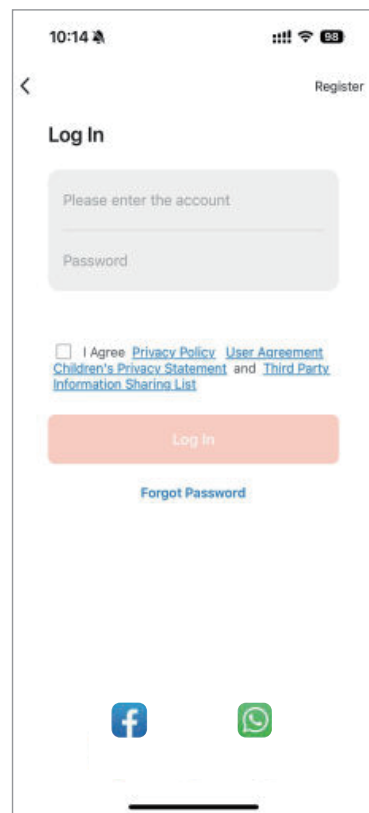
Attention:

1. When the battery level is below 20%, we recommend charging it immediately. If you use the door lock frequently, the battery can last approximately one week; if infrequently used, it can last about a month.
2. The door lock supports a maximum of 100 sets of passwords. The app allows entry of up to 50 sets, while the door lock itself supports adding all 100 sets of passwords.

► App Connection Guide

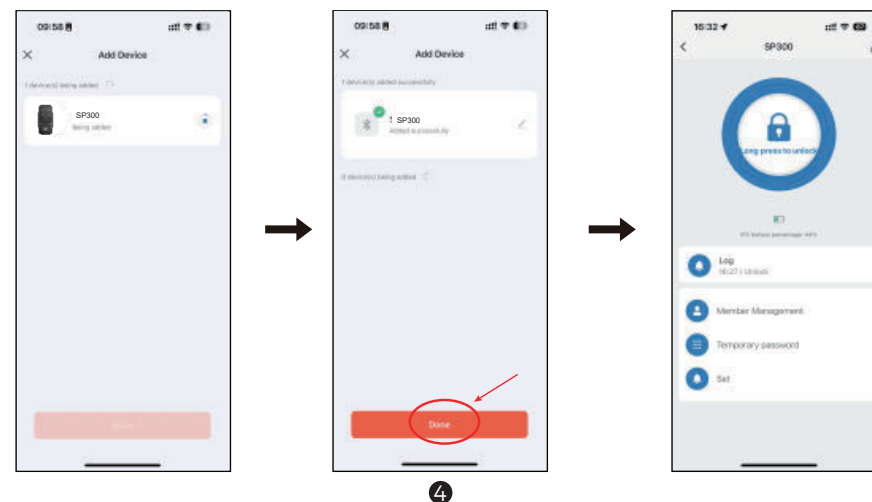
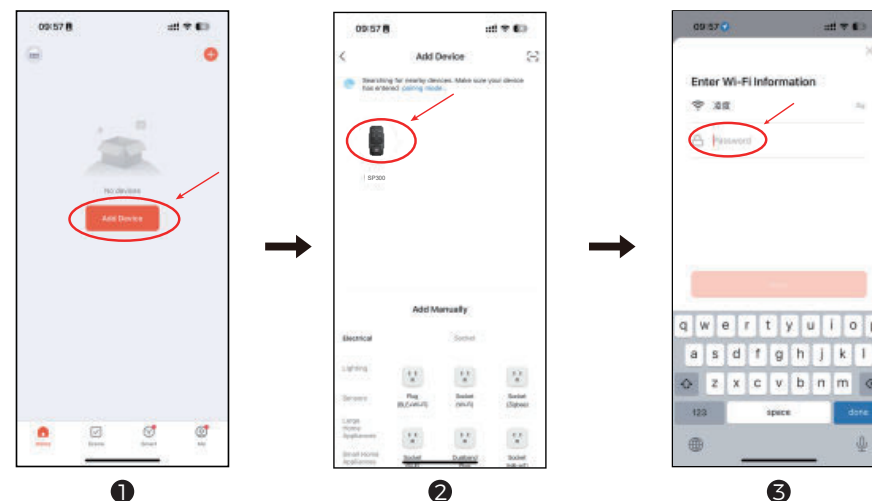


① Select the Quick Login



② Input the Account and the Password

► Tuya App User Guide



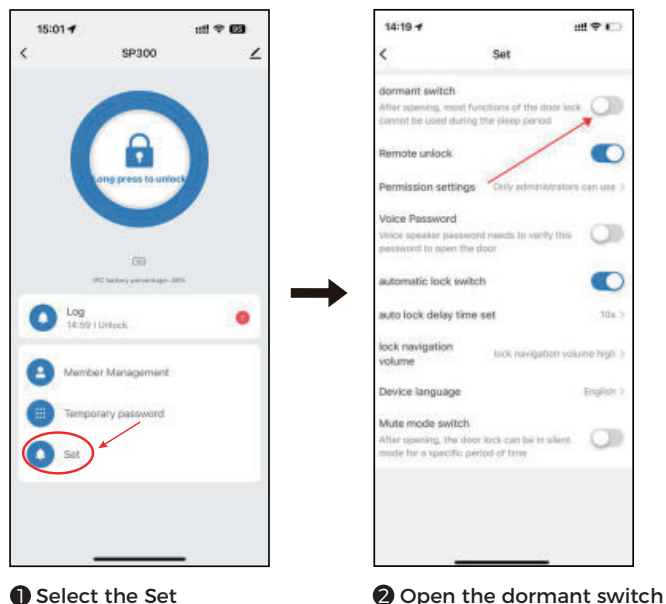
① To engage the network connection after locking the door → Short press the setup button → Input the admin password+ → Press 5+ →

② Select the SP300

③ Input the WiFi Password

④ Select the Done

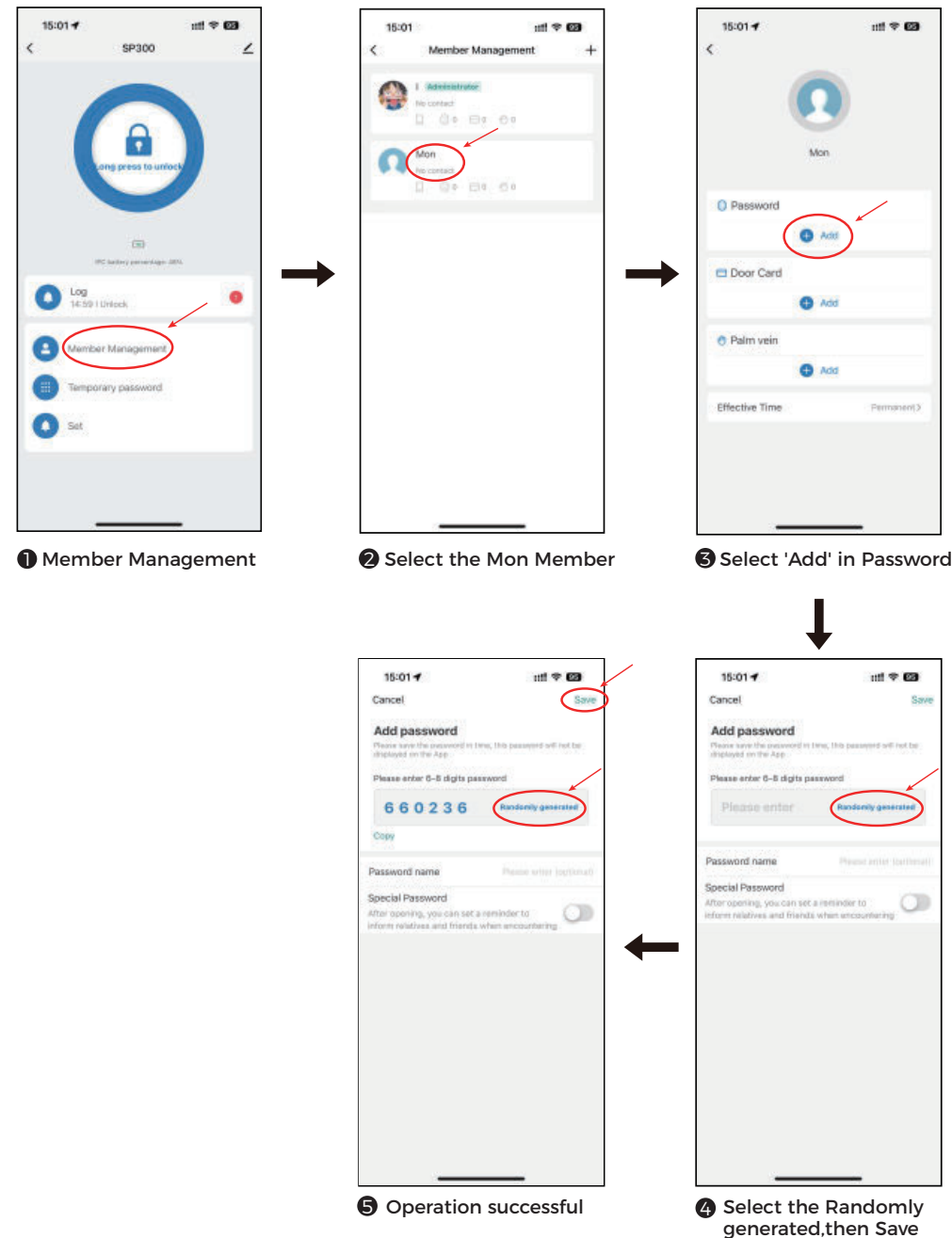
► Power-saving Mode



Attention:

1. When the dormant switch is turned on to save power, functionalities of the smart lock controlled via the smartphone app will be disabled. This includes unlocking and adding passwords through the app.
2. You can only view unlock records through the app. To unlock, add passwords or register fingerprint recognition, you must use the keypad on the door lock.
3. To disable power-saving mode, you must manually enter the password on the door lock for verification and then turn off the dormant switch in the mobile app.

► Add Member Password



SP300 说明书(英语版)

材质:128G 双铜纸 , 彩色印刷 骑马订

展开尺寸: 240x170mm(成型尺寸120x170mm)