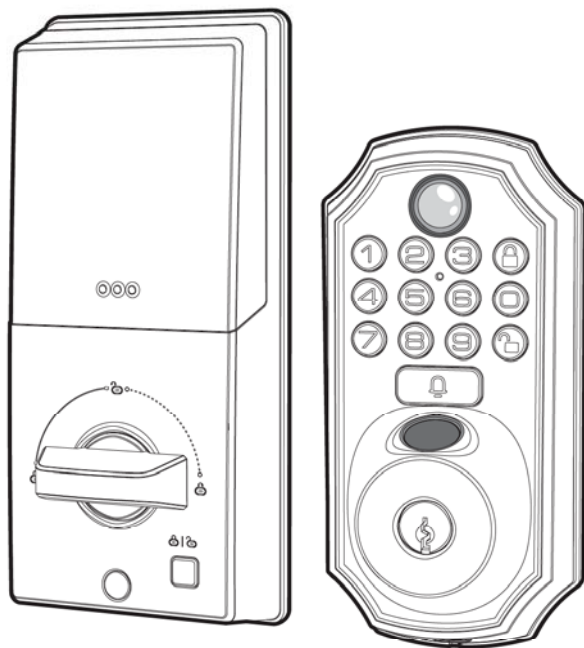


alpha

Smart Video Deadbolt

D289H



Operating Manual of American-Standard Lock

Please read and understand the Operating Manual before use.

Caution: Please take along an emergency key or put it in a safe place outside.



You could save your time by scanning the QRcode to watch a video on how to installant the lock.

■ Instructions for Use

Notice: Prepare screwdriver and a drilling machine before installation.

1. The initial default password for the new lock is "123456" and all fingerprints can unlock it.
2. When the lock has been added with an administrator password, only registered users can unlock the lock. After connecting to the app, press the doorbell button and the user can unlock the door on the mobile app.
3. When unlocking the lock, if the battery is low, you will receive a prompt to replace the battery in a timely manner before unlocking the lock. It is recommended to replace the battery as soon as possible if it is running low. The battery can last for approximately 200 door openings, so it is important to replace it promptly when necessary.
4. Please do not scrape the surface with corrosive objects or sharp objects to avoid damage to the lock surface.
5. When the battery is dead or the electronic part fails, you can use the emergency key to unlock the lock outside. Please properly put the key in a safe place outside.
6. After the installation, the door must be in an open state for debugging and initialization parameter setting.
7. Working temperature: -4°F(-20°C) to -140°F(60°C).

■ Packing List

S/N	Content	Quantity
1	Front lock	1
2	Rear lock	1
3	Lock cylinder(Including key*2)	1
4	Specification	1
5	Installation accessories package	1
6	Opening drawing	1
7	Front Door Handle Set	1
8	Doorbell	1

■ Product Functional Characteristics



Camera



Key
Unlock



Fingerprint
Unlocking



Password
Unlock



Anti-Peeping
Password



Standard Lock
Cylinder



Voice
Communication



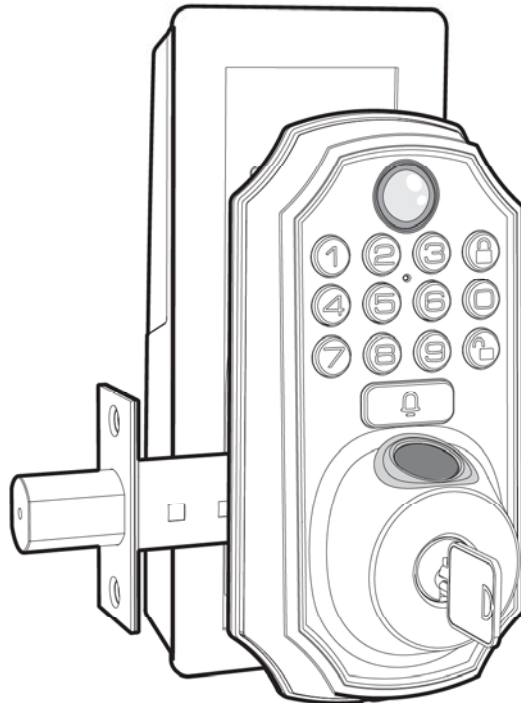
App
Unlock



Low Battery
Warning



Automatic
Locking



■ Product Details Introduction

Camera

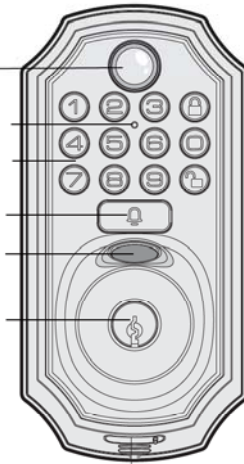
Voice Communication Hole

Password Keyboard

Doorbell Button

Fingerprint collection

Mechanical keyhole



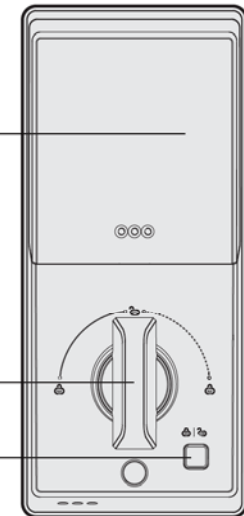
Emergency power port (TYPE-C interface)

Front lock body

Battery lid

Manual knob opens

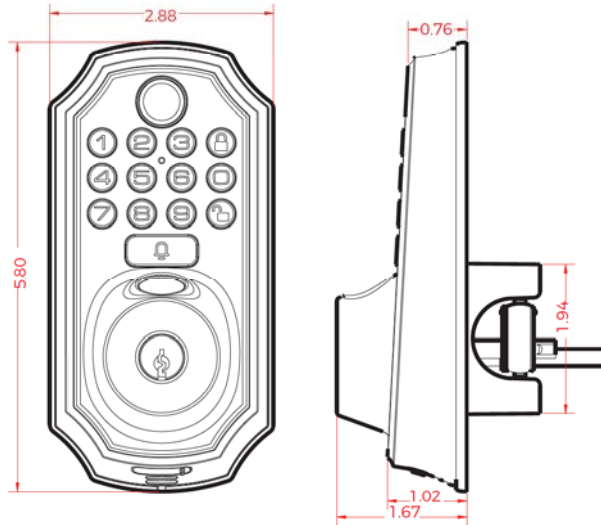
One Touch Lock



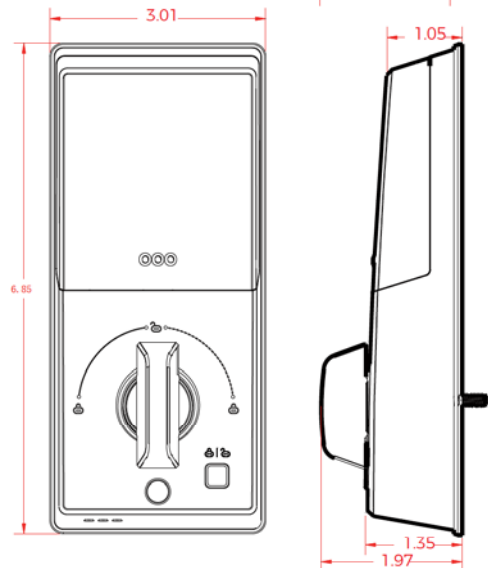
Back lock body

■ Product Size

Front lock
body : Inch



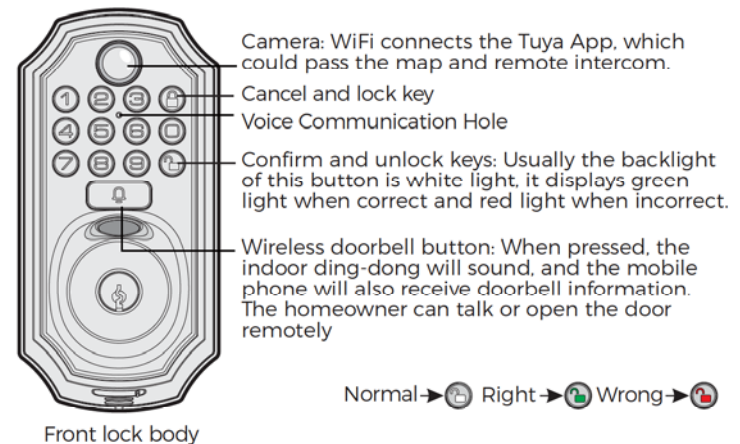
Back lock
body: Inch



■ Product Specifications and Menu Operations

Name	Content
Key category	password, fingerprint, app unlock and mechanical key
Password capacity	Up to 3 administrator users, up to 50 ordinary password users
Fingerprint capacity	Up to 3 administrator users, up to 50 ordinary password users
Power supply	4 AA alkaline batteries
Remind	Prompt of light and voice reminder
Low Battery Alarm	4.8V
Antistatic	Exposure+8KV Air+/15KV
Stand-by Current	<70uA
Dynamic power consumption	<300mA
Working enviroment	-4°F/-20°C ~ +122°F/+50°C
Operating humidity	0%-95%

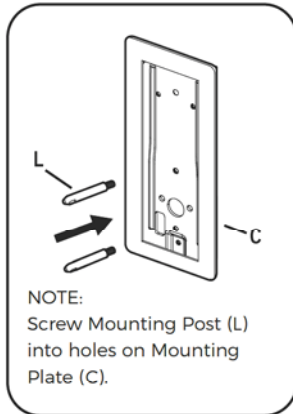
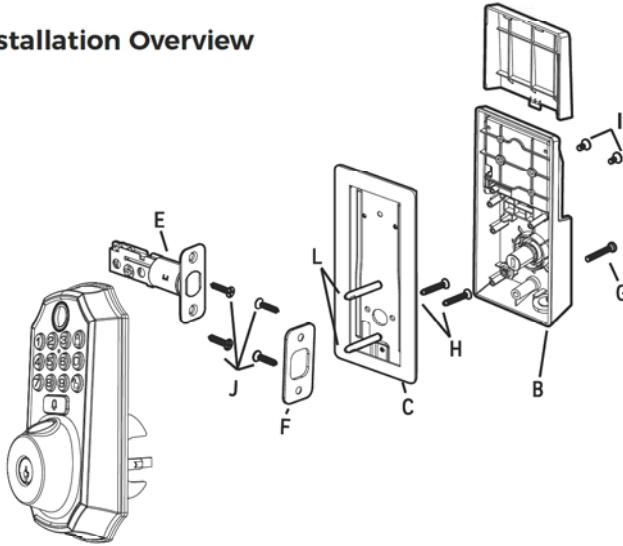
■ Key-Press And Light Indicator Function



Normal → Right → Wrong →

■ Installation

① Installation Overview



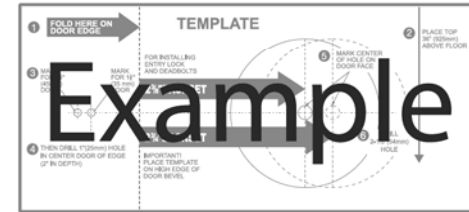
If your door thickness is
1.38in/35mm to 1.77in/45mm
door thickness, you should use
0.98in/25mm shorter screws

If your door thickness is 1.77
in/45mm to 2.17in/55mm door
thickness, you should use
1.38in/35mm longer screws.

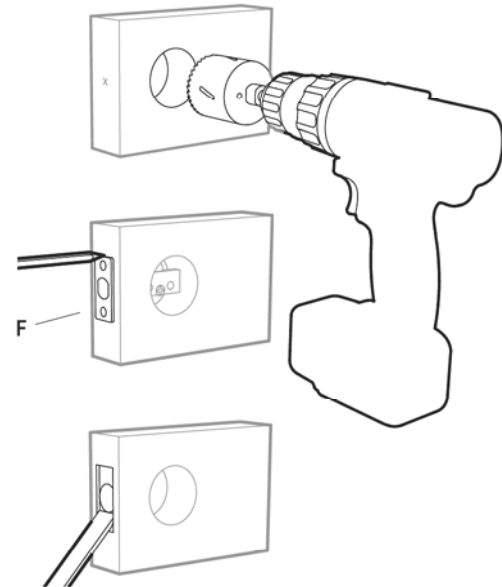
■ Installation

② Preparing Door

NOTE: Skip this step if your door comes with pre-drilled holes.



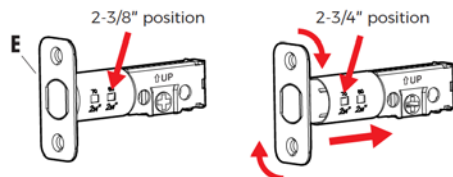
Refer to Template included for Door Prep Instructions



■ Installation

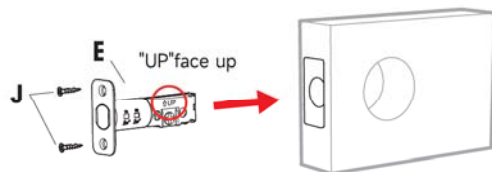
③ Install Enclosed Latch and Strike Plate

Note: Please determine the thickness size of the door.

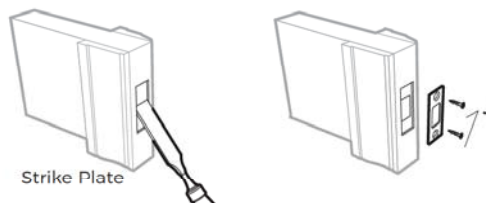


TO CONVERT FROM 2-3/8" (60mm) BACKSET TO 2-3/4" (70mm) BACKSET

1. Hold latch with "UP" signifier facing and thumb pressing on the bolt.
2. Rotate the cylinder cover clockwise.
3. Pull and twist the extension plate all the way out.
4. Rotate the cylinder counter clockwise so that the marking aligns with the 2-3/4" position indicator.



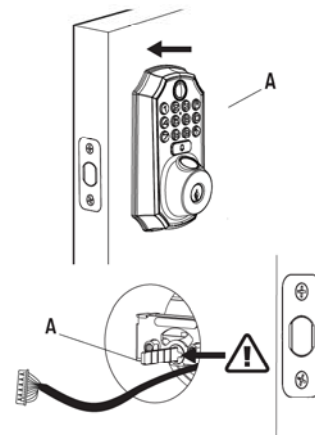
⚠ Deadbolt Latch Must Be Retracted During Installation



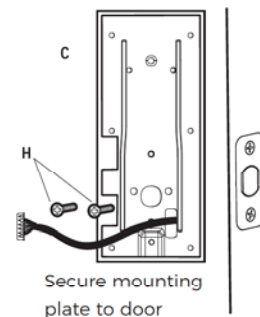
⚠ Do Not Over Tighten

■ Installation

④ Install Exterior Assembly




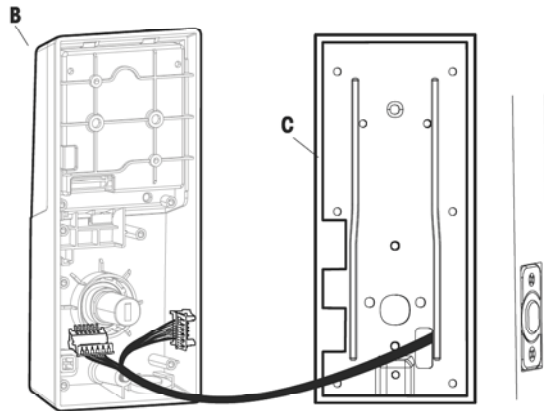
Check that the Rubber Gasket is secured on the Exterior Assembly. Insert the Exterior Assembly onto the door with the tailpiece going through the Deadbolt Latch Set in the VERTICAL POSITION. Route the Control Wire through the door under the Deadbolt Latch Set.




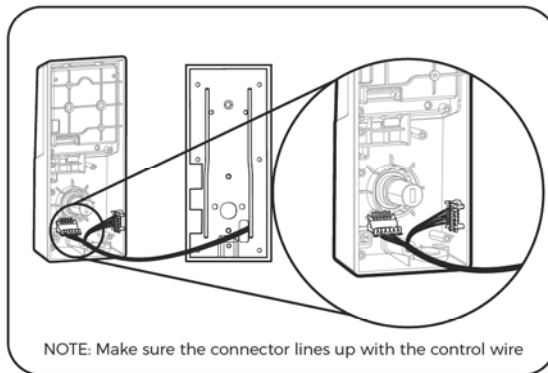
■ Installation

⑤ Install Interior Assembly

 Carefully insert control wire into the wire connector



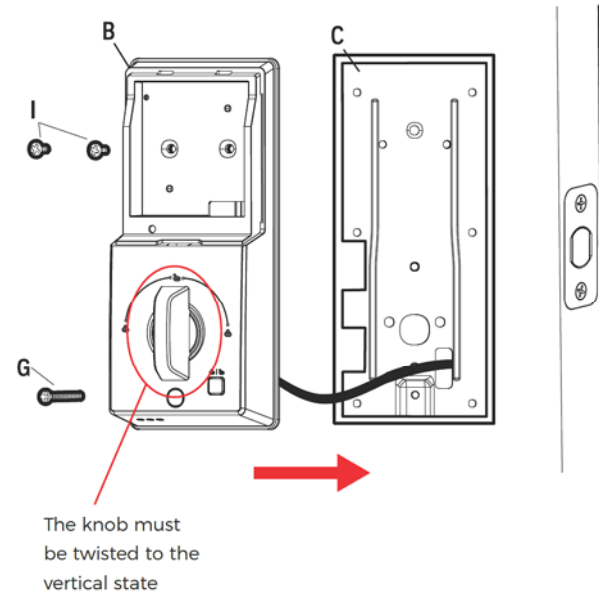
 Work with the door open



■ Installation

⑥ Install Interior Assembly

NOTE: Make sure the Knob is in the correct position.
Be careful not to pinch the control wire when assembling.



■ Installation

⑦ Install Batteries and Cover



This electronic lock requires 4 high quality AA alkaline batteries. When all 4 batteries are installed in the correct position, you should hear 2 beeps and the keypad will illuminate.

The deadbolt extends, retracts, extends, and automatically recognizes the direction of the door.(left or right handed door)

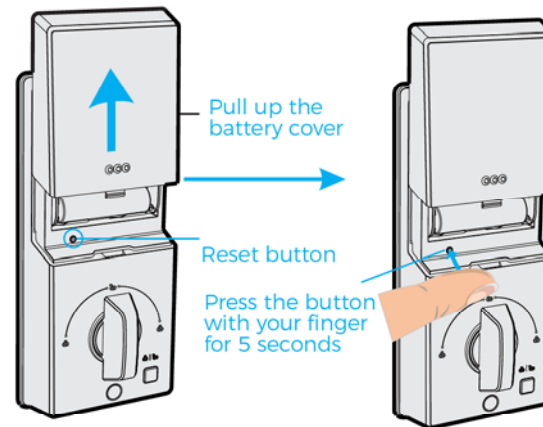
NOTE: Make sure the lock is reset before installing the battery! Otherwise the lock cannot automatically identify the direction. Do not use rechargeable batteries or non-alkaline batteries.

■ Operating Procedures

1. Operating Procedures

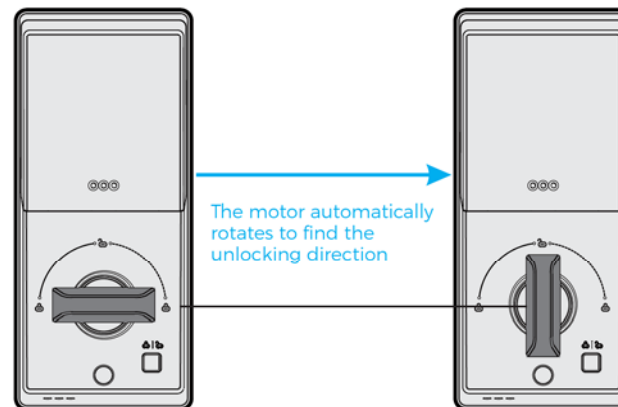
1.1 System Initialization

Press and hold the reset button for 5 seconds (6 beeps will be heard at intervals) to restore the factory settings directly, prompting "Initialization successful", and the door lock is reset successfully.



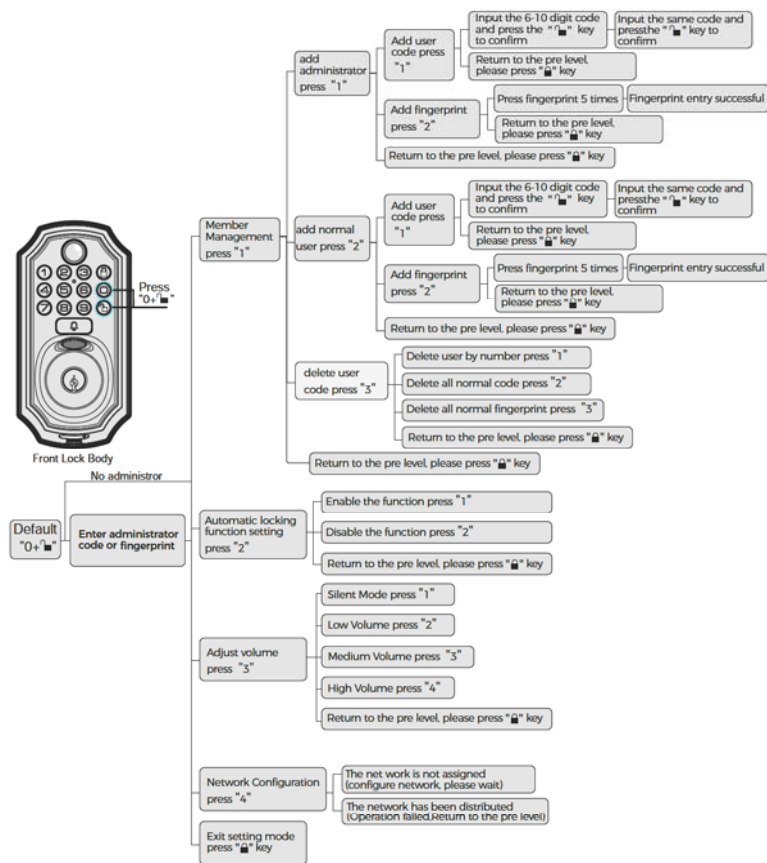
1.2 Set Up Unlocking Direction

The system is in the initial state, and the lock is in the initialization state(no user has been registered). The direction is automatically set after power-on. Voice reminder that the lock direction is set successfully. After the administrator user sets, the lock cannot set the unlocking direction.

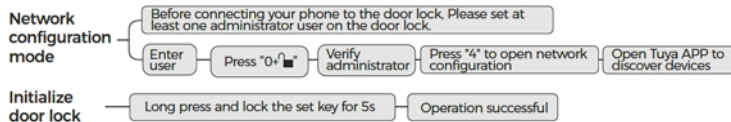


■ Operating Procedures

Function Operation Tutorial



Other operations

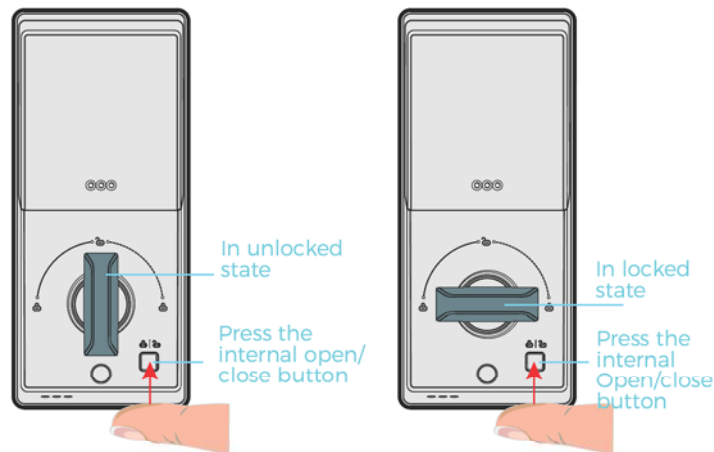


■ Operating Procedures

One Touch Lock/Unlock

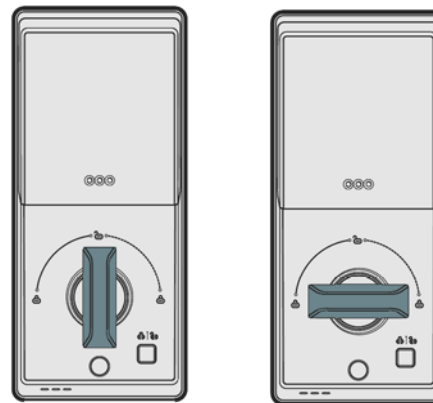
3.1 Internal one-touch switch lock

When you want to go out or quickly lock the interior of the door, press the interior door switch button, and the motor will turn the switch lock.



3.2 Internal manual unlocking

When the battery is out of power and people are inside, the door can be opened and closed by manually rotating the door knob. Note: The door opening direction can only be rotated 90 degrees in one direction.



■ Precautions for Use

1. Any disassembly or assembly is prohibited

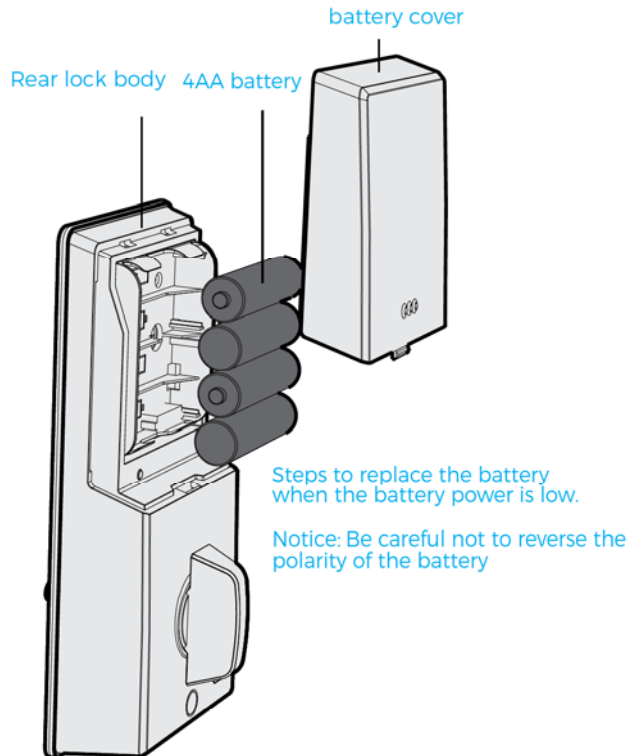
This product is composed of precision and complex components. Please do not disassemble or assemble the internal structure at will to avoid abnormal product operation or other use hazards. If you need to disassemble or assemble again, please contact a professional for operation.

2. Use cleaning methods with caution

Please use a dry cloth to clean this product. Do not wash it with water to avoid circuit failure.

3. Measures to deal with low or exhausted battery power

When the battery is low, it prompts you to verify your fingerprint or password. Before successfully unlocking, it prompts: The battery is low, please replace the battery.

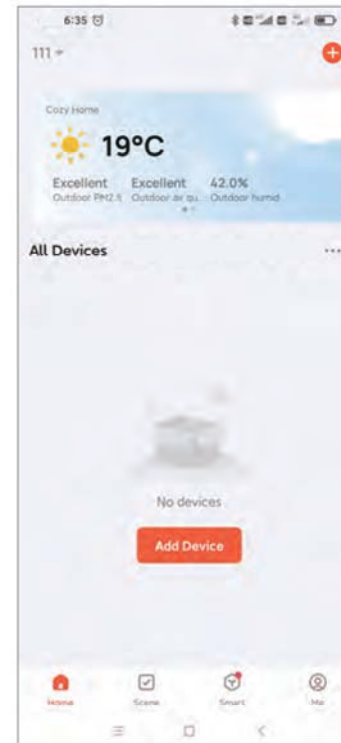


■ Tuya Smart APP User Instructions

Tuya Smart-APP

Before using the APP to configure the network, at least one password must be added to the door lock.

- Press the 0+ button
- Verify administrator user
- Press button 4 to open the distribution network configuration
- Open Tuya App to connect.



1. Door lock distribution network mode

After the door lock is connected to the mobile phone, it needs to be restored to factory settings before it can re-enter the network distribution mode.

Note: The distance between the door lock and the WiFi router is controlled within 10 meters to ensure that the door lock connect to the WIFI network is normal.

■ Tuya Smart APP User Instructions

2. Add device

(Note: Before connecting the mobile app and the door lock, please make sure both Bluetooth and WiFi are turned on.)

2.1 Select "Add Device"



2.2 Select "Add Device" (the door lock must be in network distribution status)



2.3 Enter the Wifi password (supports 2.4G Wifi, not yet 5G Wifi)



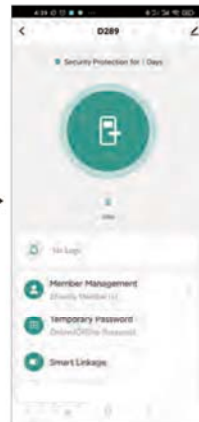
2.4 Added successfully, next step



2.5 Device list



2.6 Door lock home page



1. You could save your time by scanning the QR code to watch a video on how to Pairing the App with the Device.

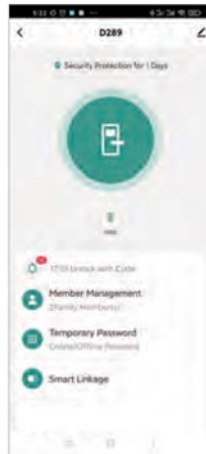


2.You could save your time by scanning the QR code to watch a video on how to App Functionality Demonstration.

■ Tuya Smart APP User Instructions

Temporary password setting

1. Click "Temporary Password"



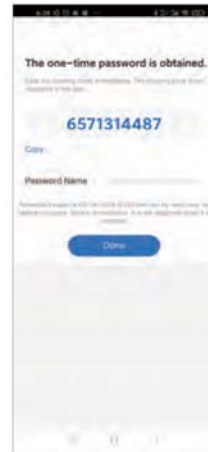
2. You can choose to set a time password & disposable password



3. Set a limited time password



4. Set disposable password



■ Doorbell Request

When the door lock is equipped with a network, you can request to open the door remotely by pressing the doorbell button outside the door. The owner can also see the person outside the door on the mobile APP and open the door remotely.

1. Press the doorbell button on the door lock



Front lock body

2. Receive door lock reminder on mobile phone



3. Click "check" to view the people outside the door



4. You can open the door directly or click on the video

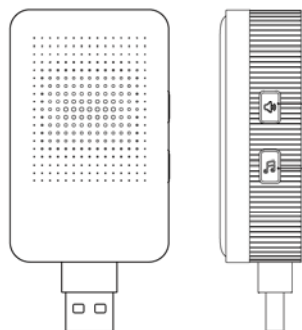


5. You can communicate with people outside the video or click to open the door directly



■ Doorbell Introduction

Model: D289H



Note: If the door lock is in normal use, the doorbell will automatically connect to the door lock. If you find that the doorbell is not connected, please follow the tutorial below.

① **Doorbell Volume Setting Button**

② **Doorbell Ringtone Selection Button**

Chime accessory pairing guide:

1. The door lock is in the initial state.
2. Press and hold the chime volume setting button for about 10 seconds, and release when you hear the tone.
3. Press the "doorbell button" of the door lock at least three times, and the doorbell and door lock will ring at the same time.

Warranty card

Product Information

The copy kept by customers

Product model		Purchase date		MM/DD/YY	
Address of purchase	City		(County)	Province	
Purchase price		Invoice No.			

User name	Telephone	Postal code
User address	City	Province
Product satisfaction degree	Quality performance: <input type="checkbox"/> Good <input type="checkbox"/> General <input type="checkbox"/> Poor Appearance: <input type="checkbox"/> Good <input type="checkbox"/> General <input type="checkbox"/> Poor	
Application field	Family <input type="checkbox"/> Office <input type="checkbox"/> Hotel <input type="checkbox"/> Others <input type="checkbox"/>	
The first reason	Quality <input type="checkbox"/> Appearance: <input type="checkbox"/> Function <input type="checkbox"/> Price <input type="checkbox"/> Service <input type="checkbox"/> Word-of-mouth <input type="checkbox"/> Other <input type="checkbox"/>	
Your suggestion		

In order to ensure your benefits to get the "repair, refund and replacement guarantees" ("three guarantees" for short) from our company, please note:

1. When purchasing the product, please fill out the card completely, correctly and truthfully.

2. Please ask for the invoice or voucher at the time of purchase;

3. Please take good care of the card, the valid "three guarantees card" and valid purchase voucher are the preconditions to realize your rights of "three guarantees"

4. Please take good care of attachments and information for the items. If there is any good return, you need to return the whole set.

The following situations are not within the scope of quality warranty:

1. Warranty period expiry;

2. No invoice or voucher at the time of purchase, no valid guarantee voucher, or the counterfeit and shoddy products;

3. Incomplete outer packing at the time of return of products, incomplete accessories, or users disassemble privately and repair on their own, etc.;

4. Damage resulting from personal factors: Such as break, soaking, fierce hit, use under super high temperature, put beside the high magnetic products for a long time, etc.;

5. Sellers' secondary sales of the product is affected by human causes;

The warranty card is altered or the information filled in on the warranty card is inconsistent with the actual items;

7. No product serial number, the product number is damaged and the product identity cannot be proved;

8. Product damage due to natural disasters such as acts of god; 9. Damage due to failure to use and assemble as per the operation manual.

Note: 1. The power of interpretation for the content of the card is owned by our company;

2. Presented gifts are outside of the service range;

3. Only the records filled in by institutions and engineers with the maintenance qualification authorized by our company are valid;

4. The service records are just limited to the content stipulated by "three guarantees", for details, please refer to relevant regulations of the state.

■ Warranty

- We provide 30 days worry-free money back and one year limited warranty.
- Any problem, please feel free to contact us.
E-mail us at: support@arpha.com

FCC Statement

This equipment has been tested and found to comply with the limits for a Class B digital device, pursuant to part 15 of the FCC Rules. These limits are designed to provide reasonable protection against harmful interference in a residential installation. This equipment generates, uses and can radiate radio frequency energy and, if not installed and used in accordance with the instructions, may cause harmful interference to radio communications. However, there is no guarantee that interference will not occur in a particular installation. If this equipment does cause harmful interference to radio or television reception, which can be determined by turning the equipment off and on, the user is encouraged to try to correct the interference by one or more of the following measures:

- Reorient or relocate the receiving antenna.
- Increase the separation between the equipment and receiver.
- Connect the equipment into an outlet on a circuit different from that to which the receiver is connected.
- Consult the dealer or an experienced radio/TV technician for help.

Caution: Any changes or modifications to this device not explicitly approved by manufacturer could void your authority to operate this equipment.

This device complies with part 15 of the FCC Rules. Operation is subject to the following two conditions: (1) This device may not cause harmful interference, and (2) this device must accept any interference received, including interference that may cause undesired operation.

RF Exposure Information

This equipment complies with FCC radiation exposure limits set forth for an uncontrolled environment. This equipment should be installed and operated with minimum distance 20cm between the radiator and your body.



Intelligent Share· Relieved Life