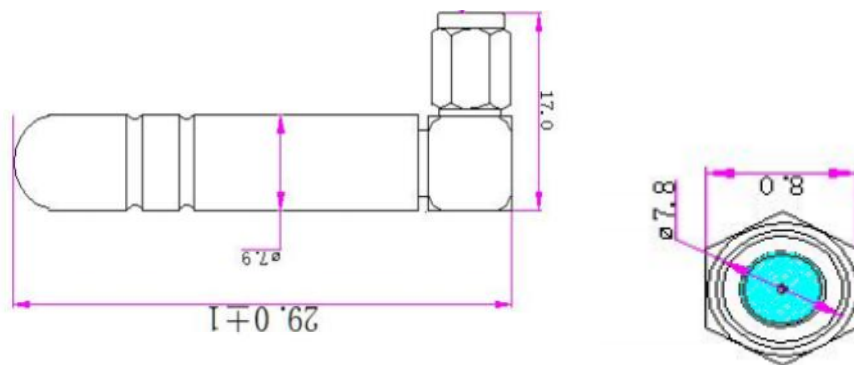


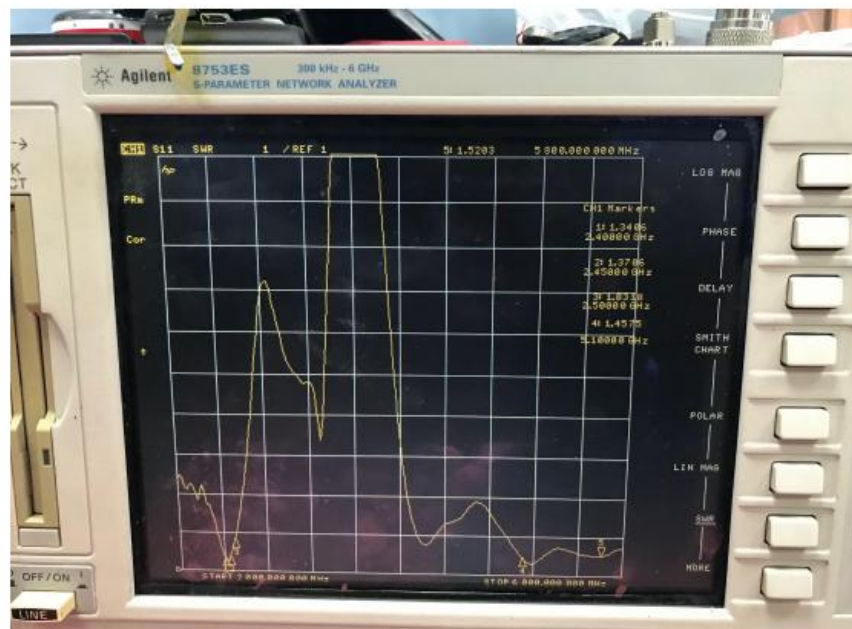
Performance parameters

(VSWR, Efficiency and Gain, Directional Graph)



SWR

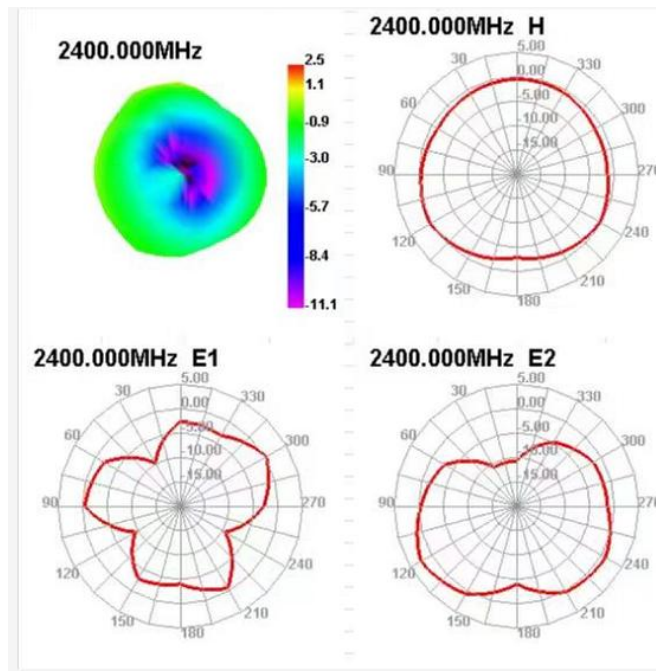
SWR



Efficiency
and Gain

| Passive Test For WIFI | | | | | | | | | |
|-----------------------|-------------|--------------|---------------|---------------|------------|-------------|-------------|-------------|----------|
| Freq (MHz) | Effi (%) | Effi (dB) | Gain (dBi) | Gain (dBd) | UHS (%) | DHIS (%) | Max (dB) | Min (dB) | Att H |
| 2400 | 52.5 | -2.8 | 1.77 | -0.38 | 33.79 | 18.711 | 1.77 | -16.22 | |
| 2410 | 52.19 | -2.82 | 1.65 | -0.5 | 33.644 | 18.548 | 1.65 | -15.92 | |
| 2420 | 51.69 | -2.87 | 1.5 | -0.65 | 33.325 | 18.362 | 1.5 | -15.32 | |
| 2430 | 50.49 | -2.97 | 1.33 | -0.82 | 32.605 | 17.886 | 1.33 | -15.32 | |
| 2440 | 52.25 | -2.82 | 1.49 | -0.66 | 33.893 | 18.354 | 1.49 | -15.44 | |
| 2450 | 54.16 | -2.66 | 1.64 | -0.51 | 35.564 | 18.592 | 1.64 | -15.72 | |
| 2460 | 53.18 | -2.74 | 1.53 | -0.62 | 35.419 | 17.761 | 1.53 | -16.88 | |
| 2470 | 53.35 | -2.73 | 1.51 | -0.64 | 35.958 | 17.389 | 1.51 | -17.44 | |
| 2480 | 54.2 | -2.66 | 1.5 | -0.65 | 36.806 | 17.391 | 1.5 | -16.88 | |
| 2490 | 54.75 | -2.62 | 1.43 | -0.72 | 37.292 | 17.459 | 1.43 | -16.87 | |
| 2500 | 51.65 | -2.87 | 1 | -1.15 | 35.18 | 16.467 | 1 | -17.68 | |

2400MHz
Directional
Graph



2410MHz
Directional
Graph

