



CARE AND MAINTENANCE: Use and store only in normal temperature environments, avoid exposure to prolonged direct sunlight and open flame. Handle carefully; do not drop. Keep dry, away from dust and dirt. Wipe with a damp cloth occasionally to keep clean. Any changes or modifications not expressly approved by the party responsible for compliance could void the user's authority to operate the equipment.



FCC REGULATIONS: This device complies with part 15 of FCC Rules. Operation is subject to the following two conditions: 1) device may not cause harmful interference, and 2) device must accept any interference received, including interference that may cause undesired operation.

Note: This equipment has been tested and found to comply with the limits for a Class B digital device, pursuant to part 15 of the FCC Rules. These limits are designed to provide reasonable protection against harmful interference in a residential installation. This equipment generates, uses and can radiate radio frequency energy and, if not installed and used in accordance with instructions, may cause harmful interference to radio communications. However, there is no guarantee that interference will not occur in a particular installation. If this equipment does cause harmful interference to radio or television reception, which can be determined by turning the equipment off and on, the user is encouraged to try to correct the interference by one or more of the following measures: 1) Reorient / relocate the receiving antenna; 2) Increase separation between the equipment and receiver; 3) Connect equipment into an outlet on a circuit different from that to which the receiver is connected; 4) Consult the dealer or an experienced radio / TV technician for help.



LITHIUM BATTERY SAFETY: Do not burn or bury batteries. Do not puncture or crush; Do not disassemble. Recycle lithium batteries. Do not dispose of in the trash. If the electrolyte in the cells should get on your skin, thoroughly wash with soap and water. If in the eyes, rinse thoroughly with cool water. Immediately seek medical attention. The built-in battery may discharge completely after a long period without use – Recharge. Follow the instructions for charging. Do not charge longer than recommended. Unplug the USB cable when the battery is charged. The band should never be left unattended while charging.



WARNING: This product contains chemicals known to the State of California to cause cancer and birth defects or other reproductive harm. www.P65Warnings.ca.gov



These products comply with the requirements of the Directive (EU) 2015/863 on the Restriction of the Use of certain Hazardous Substances in Electrical and Electronic Equipment (RoHS) directive for banned substances.

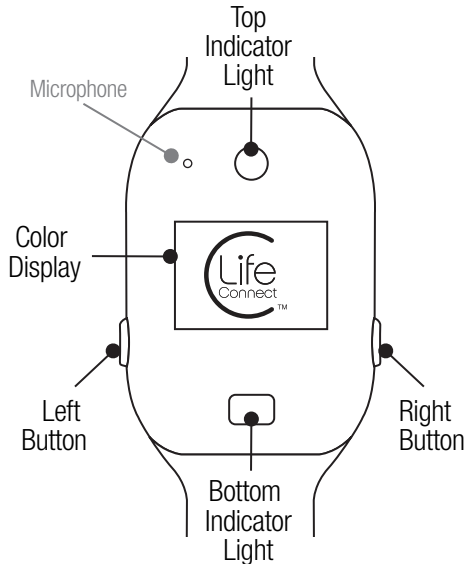
Tips and Troubleshooting

LifeConnect is designed for ease of use. It can be easily configured through the Life365 online app / portal by the user or a designated care coordinator.

LifeConnect is designed to last a number of days, depending on use. It is good practice to charge the band when not in use. Be sure to check the battery level on the band, and be aware of low battery warnings displayed on the screen.

Problem	Possible Cause	Solution
Band does not power on.	1. Dead battery; or 2. Damaged / defective device	Recharge using supplied charging cable; 2. Contact Support
Band is not charging.	Charger not properly connected; 2. Faulty power source	Assure both ends of charging cable properly connected; 2. Try alternate power source.
Screen appears off or is too dark to read.	Screen brightness is set too dim; 2. Battery too low to display full strength	Adjust display brightness in LifeConnect App.
Haptic or audio feedback (vibrations / tones) do not work.	Haptic vibration or volume is set too low	Adjust haptic or audio levels in LifeConnect App.
Newly configured or edited functions from LifeConnect app are not available on band.	Function was not configured correctly; 2. Possible disruption in WiFi, Bluetooth and / or cellular connection	Verify function is configured properly in LifeConnect App; 2. Check WiFi, Bluetooth and / or cellular connections are available and re-try download.

LifeConnect at a Glance.



FCC ID: 2ASTA-LIFECONNECT

Life Connect™

Designed for Remote Health and Care

ON-BAND SENSORS:

- Activity, Motion, Position
- Heart Rate
- Temperature
- Stress and Hydration

CONNECTED:

- Bluetooth
- WiFi
- NFC
- Cloud Managed



CAUTION. Consult related documentation prior to use for more information, including: operating instructions, intended use, precautions, safety information, warranties, privacy, terms & conditions. Complete User manual is available online at www.Life365inc.com



Manufactured in China for Life365 Inc, USA



FCC ID: 2ASTA-LIFECONNECT

Life365inc.com

©2019 Life365, Inc.

Life Connect™

A Careable from Life365

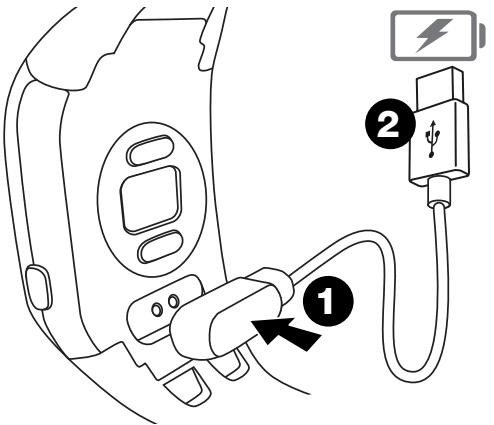
Wearable Technology
Designed for Remote Health and Care

USER QUICK REFERENCE

RevA 050719

To Begin: Plug in & Charge

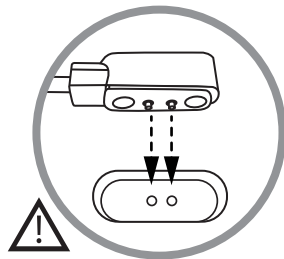
(USB
Power Source)



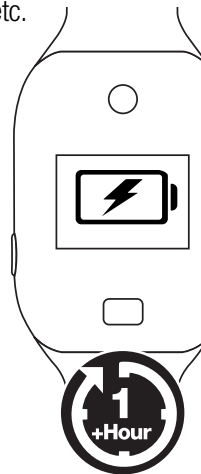
⚠ Make sure the USB charging source is connected to power.

1: Use the supplied magnetic charging cable to connect its 2 pins to the 2 metal contacts on back of the LifeConnect band.

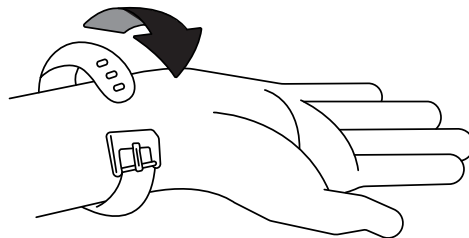
2: Plug the other end into a USB interface, charging adapter, computer, etc.



⚠ The charging pins can only be attached in one direction to the metal contacts – the magnets will repel if not aligned correctly.

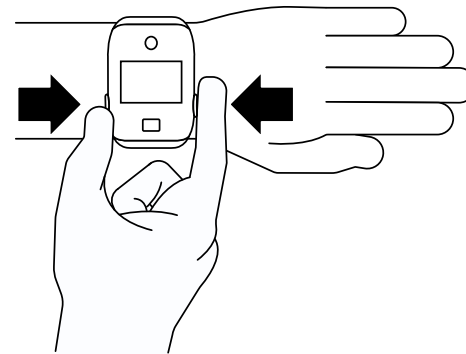


Put LifeConnect on the wrist.



Make sure the band is fastened securely enough to allow biometric sensors to make contact with the skin – but still comfortable to wear.

Turn on the LifeConnect.



Push and hold the Left and Right Button for a few seconds – until the start up screen displays. *See online manual or app for more instructions.*

Use on board sensors.



Add care coordination apps.



Life365inc.com