

说明书

Instructions

一、按键介绍与码值 (Key introduction and code)

按键码值 (Key code)

BLE 蓝牙功能

语音：兼容 ATV 和 GTV。

红外协议：NEC

Infrared protocol: NEC

红外用户码：0x8877

Infrared user code: 0x8877

按键名称 Key name	HID Bluetooth key code table		红外键值 Infrared key	备注 Notes
	Usage Page	Usage ID		
Power	N/A	N/A	0X21	Only send IR code
Input	N/A	N/A	0X60	
Voice	0x0C	0X221	0X46	In Bluetooth mode,,send both BLE & IR signal at once
Bookmark	N/A	N/A	0X74	Only send IR code
Setting	N/A	N/A	0X0F	
Up	N/A	N/A	0X15	
Down	N/A	N/A	0X16	
Left	N/A	N/A	0X17	
Right	N/A	N/A	0X18	
OK	N/A	N/A	0X19	
Back	N/A	N/A	0X48	
Home	0x0C	0X223	0X47	In Bluetooth mode,send both BLE & IR signal at once
Projector	N/A	N/A	0X32	Only send IR code
Vol+	0x07	0X80	0X23	In Bluetooth mode,send both BLE & IR signal at once
Vol-	0x07	0X81	0X24	
F+	N/A	N/A	0X33	Only send IR code
F-	N/A	N/A	0X34	
Mute	N/A	N/A	0X25	
YouTube	0x0C	0X77	0X64	In Bluetooth mode,send both BLE & IR signal at once
Netflix	0x0C	0X78	0X63	
Prime video	0x0C	0X79	0X67	
Music	0x0C	0X7A	0X68	

二、功能 (Function)

休眠机制 Hibernation mechanism

1 红外模式下,当遥控器无操作 3s 后,遥控器进入深休眠状态。

In infrared mode, when the remote control is not operated for 3s, the remote control enters the deep sleep state.

2 蓝牙连接时,当遥控器无操作 3s 后,遥控器进入浅休眠状态（浅休眠模式下，每隔 1s 发送一次蓝牙心跳包）

When Bluetooth is connected, the remote control is not operated for 3s, and then it will enters the light sleep state.

(In shallow sleep mode, a Bluetooth heartbeat packet is sent every 1 second.)

3 在休眠模式下，遥控器按键操作可唤醒系统进入正常工作状态。

In the sleep mode, the remote control button operation can wake up the system and enter the normal working state.

配对说明 Pairing instructions

配对组合键 Paired key combination

配对组合键 Pairing key combination: [Projector] + [BACK]

取消配对组合键 Unpairing key combination: [OK] + [MUTE]

手工配对步骤 Manual pairing steps

主机端开机进入 launcher 界面,使用遥控器打开主机端设置界面，点击蓝牙设置，打开蓝牙搜索按钮，或者按语音键直接进入配对界面；

Boot the STB into the launcher interface. Use the remote control to open the set-top box setting interface, click Bluetooth settings to open the Bluetooth search button or press the voice key to directly enter the pairing interface.

同时按下遥控器上的【Projector】+【BACK】键 5s 以上，当遥控器指示灯闪烁时，松开配对组合按键；

Press the [Projector] + [BACK] buttons on the remote control at the same time for more than 5 seconds, when the remote control indicator flashes,release the pairing combination button.

在主机端的蓝牙设备列表选择 RemoteG10 设备，点击连接，完成遥控器配对绑定；

Select the RemoteG10 device in the Bluetooth device list of the set-top box, click connect to complete the remote control pairing and binding.

当遥控器配对成功时，遥控器指示灯慢闪 2 次后熄灭；

When the remote control is successfully paired, the remote control indicator flashes slowly for 2 times and then goes out.

取消配对 Unpair

同时按下【OK】+【Mute】键 5s 以上，取消蓝牙配对。

Press [OK] + [Mute] keys at the same time for more than 5 seconds to cancel Bluetooth pairing.

回连机制 Back-connection mechanism

当遥控器与主机端完成配对后，在遥控器与主机端断开蓝牙连接状态下，每次按键，遥控器会在发送按键红外键值码后，发送一次回连广播，当主机端接收到回连广播后，遥控器与主机端重新建立连接关系，从红外模式转换到蓝牙模式。

After the remote control and the set-top box are paired, when the remote control and the set-top box are disconnected from the Bluetooth connection state, each time you press a key, the remote control will send a loopback broadcast after sending the infrared key value code of the button. When the set-top box receives the response After the broadcast is connected, the remote control and the set-top box re-establish the connection relationship and switch from infrared mode to Bluetooth mode.

语音说明 Voice description

遥控器通过麦克风进行语音采集，采样率为 16KHz，采样精度为 16bit，采样声道为单声道；

The remote control uses a microphone for voice collection, the sampling rate is 16KHz, the sampling accuracy is 16bit, and the sampling channel is mono;

遥控器与主机内置的蓝牙建立蓝牙连接；

The remote control establishes a Bluetooth connection with the built-in Bluetooth of the host

指示灯说明 Indicator light description

红外模式 Infrared mode

按键按下时，指示灯亮 0.2s 后熄灭

When the button is pressed, the indicator light turns on for 0.2s and then goes out.

蓝牙模式 Bluetooth mode

按键按下时，指示灯亮 0.2s 后熄灭

When the button is pressed, the indicator light is on, when the button is lifted, the indicator light is off.

配对状态 Pairing status

进入配对状态时，指示灯快速闪烁（0.2s 间隔 ON/OFF）

When entering the pairing state, the indicator light flashes quickly (0.2s interval ON/OFF)

配对成功时，指示灯长亮 1s 熄灭；

When the pairing is successful, the indicator light stays on for 1s and goes out;

配对超时或配对失败时，指示灯直接熄灭

When pairing timeout or pairing fails, the indicator light will go out directly

不受外界环境干扰情况下，配对成功率 95%以上

The pairing success rate is above 95% without interference from external environment

录音状态 Recording status

当按下遥控器语音键且开始录音时，指示灯常亮；松开语音键且停止录音时，指示灯熄灭

When the remote control voice key is pressed and the recording is started,the indicator light is always on; when the voice key is released and the recording is stopped, the indicator light is off.

主机设备、网络 and 语音识别服务正常情况下，语音识别成功率 95%以上

Under normal host equipment, network and voice recognition services, the success rate of voice recognition is above 95%.

其它功能（Other）

.1. VID :0x0957

.2.PID: 0x0001

.3.Vendor ID Source : Bluetooth SIG

.4.回连方式：待客户确认需求

三、产品效果图（Product Cosmetics drawing）

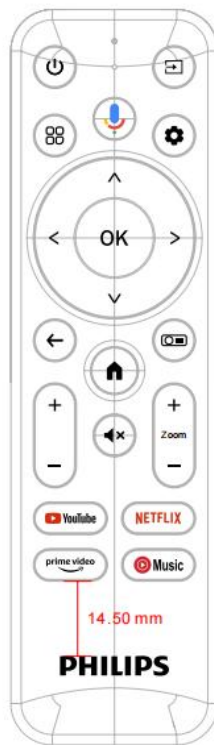
产品单体净重 Net weight of product: 49g

产品尺寸 Product size: 142*40*17mm

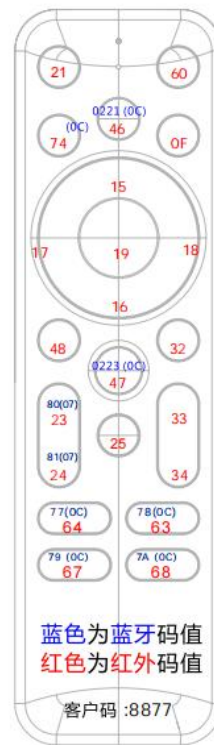
效果图



丝印图



码值图



设备名: RemoteG10

配对组合键:[BACK] + [HOME]

导电胶型号: RF22B-2

1.导电胶颜色:

- ☐ 白色
☒ 黑色

3.外壳颜色:

- ☒ 黑色

2.导电丝印胶颜色:

- ☐ 白色
☒ 黑色
-  PANTONE 1795 C
-  PANTONE 2257 C
-  PANTONE 1795 C

4.面壳丝印颜色:

- ☒ PANTONE 877 C

V2.0

20241203修改码值
20241205更新按键码值

FCC Statement

This equipment has been tested and found to comply with the limits for a Class B digital device, pursuant to part 15 of the FCC Rules. These limits are designed to provide reasonable protection against harmful interference in a residential installation. This equipment generates, uses and can radiate radio frequency energy and, if not installed and used in accordance with the instructions, may cause harmful interference to radio communications. However, there is no guarantee that interference will not occur in a particular installation. If this equipment does cause harmful interference to radio or television reception, which can be determined by turning the equipment off and on, the user is encouraged to try to correct the interference by one or more of the following measures:

- Reorient or relocate the receiving antenna.
- Increase the separation between the equipment and receiver.
- Connect the equipment into an outlet on a circuit different from that to which the receiver is connected.
- Consult the dealer or an experienced radio/TV technician for help.

Caution: Any changes or modifications to this device not explicitly approved by manufacturer could void your authority

to operate this equipment.

This device complies with part 15 of the FCC Rules. Operation is subject to the following two conditions: (1) This device may not cause harmful interference, and (2) this device must accept any interference received, including interference that may cause undesired operation.

RF Exposure Information

The device has been evaluated to meet general RF exposure requirement.

The device can be used in portable exposure condition, compliance with exposure requirements.

ISED Statement

English: This device contains licence-exempt transmitter(s)/receiver(s) that comply with Innovation, Science and Economic Development Canada's licence-exempt RSS(s). Operation is subject to the following two conditions:

(1) This device may not cause interference.

(2) This device must accept any interference, including interference that may cause undesired operation of the device.

The digital apparatus complies with Canadian CAN ICES-3 (B)/NMB-3(B).

French: Cet appareil contient des émetteurs/récepteurs exempts de licence qui sont conformes aux RSS exemptés de licence d'Innovation, Sciences et Développement économique Canada.

L'exploitation est soumise aux deux conditions suivantes :

(1) Cet appareil ne doit pas provoquer d'interférences.

(2) Cet appareil doit accepter toute interférence, y compris les interférences susceptibles de provoquer un fonctionnement indésirable de l'appareil.

L'appareil numérique du ciem conforme canadien peut - 3 (b) / nmb - 3 (b).

This device meets the exemption from the routine evaluation limits in section 2.5 of RSS 102 and compliance with RSS 102 RF exposure, users can obtain Canadian information on RF exposure and compliance.

cet appareil est conforme à l'exemption des limites d'évaluation courante dans la section 2.5 du cnr - 102 et conformité avec rss 102 de l'exposition aux rf, les utilisateurs peuvent obtenir des données canadiennes sur l'exposition aux champs rf et la conformité.

This equipment complies with Canada radiation exposure limits set forth for an uncontrolled environment.

Cet équipement est conforme aux limites d'exposition aux rayonnements du Canada établies pour un environnement non contrôlé.

The device has been evaluated to meet general RF exposure requirement. This

equipment should be installed and operated with minimum distance 0mm between the radiator & your body.

L'appareil a été évalué pour répondre aux exigences générales d'exposition aux RF.

Cet équipement doit être installé et utilisé avec une distance minimale de 0 mm entre le radiateur et votre corps.