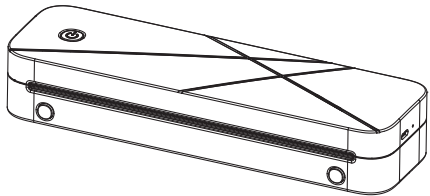


Quick Start Guide

A282M
Portable Printer

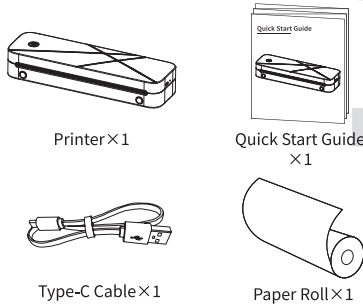


HVIN:A282MT2

English

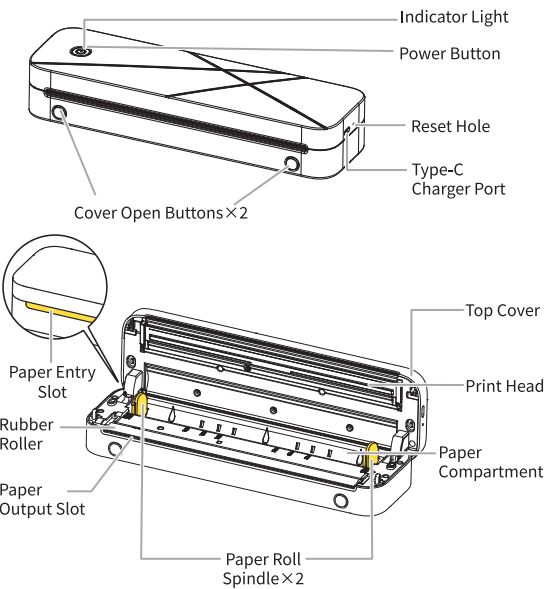
1.Product Introduction

1.1 Packing List



The paper roll has been placed inside the printer.

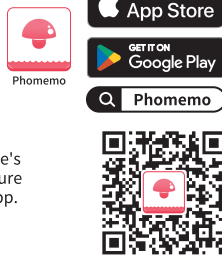
1.2 Printer Parts Instruction



2. Getting Started

2.1 Downloading the App

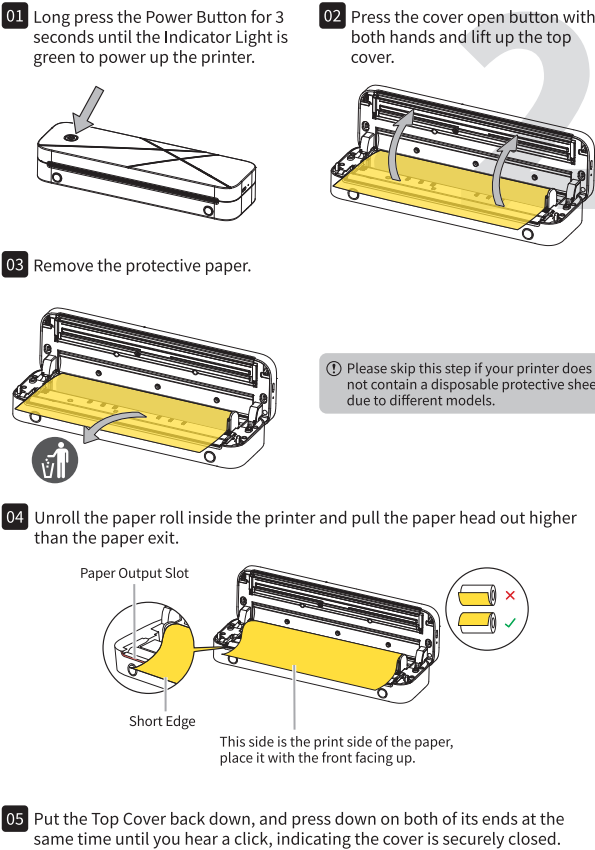
Method 1:Search for the "Phomemo" app on App Store® or Google Play™ for download and installation.



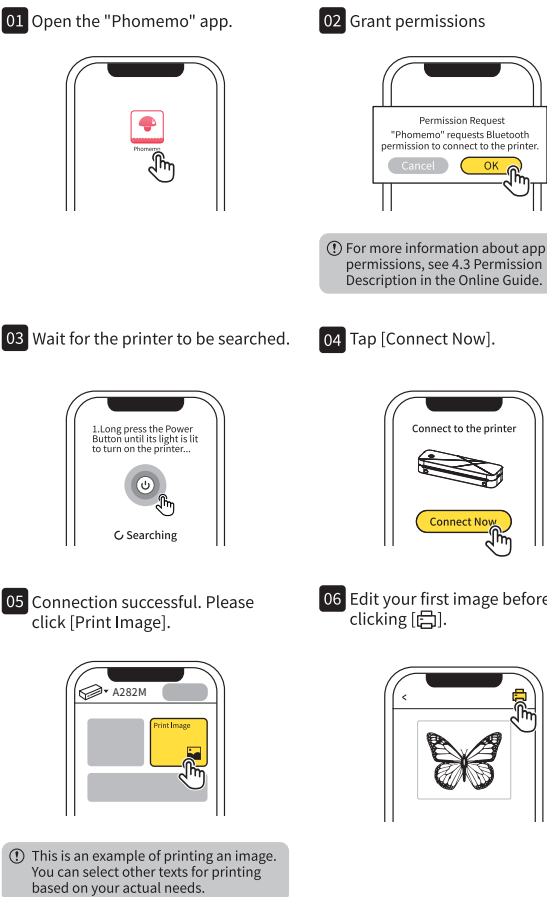
Method 2:Scan the QR code. You can scan the code using your cell phone's camera, the built-in QR code scanning feature of your browser,or a dedicated scanning app.

As the Safari browser on Apple devices does not support QR code scanning, please use your device's built-in QR code scanner instead.

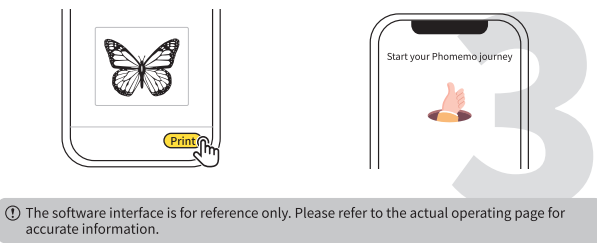
2.2 Paper Installation Guide



2.3 User Guide: Printing via Mobile App



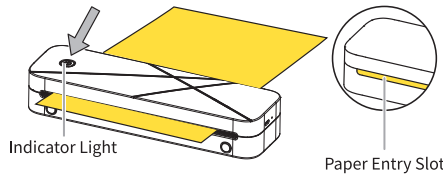
07 Confirm the preview effect of the image and then click [Print]. 08 Printing is completed.



The software interface is for reference only. Please refer to the actual operating page for accurate information.

3. Instructions for using single-sheet thermal paper

After the printer is turned on, please load the paper with the text side down in the Paper Entry Slot until the printer automatically pulls it in. When the indicator light turns green, it means the paper is successfully loaded.



The printer supports different types and sizes of paper. Please refer to the e-Manual for instructions. The printed content will not appear on the side that reads "non-printing side"

4. Additional Instructions

4.1 Button Instructions

Button Type	Operation	Function
	Long press for 3s	Power on/off
	Double press when printer is on	Print a self-test page

4.2 Indicator Light Instructions

Status	Meaning	Advised Action
	Functioning/Fully charged	/
	Charging in progress	/
	No paper installed	Install paper
	Printer overheated	Pause printing for 5-10 min
	Top Cover open	Close Top Cover
	Low battery	Charge battery for 1h (or at least 20 min for quick usage)
	Battery depleted	Charge for 4h

5. Accessing Detailed Online Guide

Visit a282m.labelife.cc to access the Detailed Online Guide, video tutorials, and answers to FAQs.



6. Information to User

6.1 FCC INFORMATION (U.S.A.)

This device complies with part 15 of the FCC Rules. Operation is subject to the following two conditions: (1) this device may not cause harmful interference, and (2) this device must accept any interference received, including interference that may cause undesired operation. Any changes or modifications not expressly approved by the party responsible for compliance could void the user's authority to operate the equipment. Note: This equipment has been tested and found to comply with the limits for a Class A digital device, pursuant to part 15 of the FCC Rules. These limits are designed to provide reasonable protection against harmful interference when the equipment is operated in a commercial environment. This equipment generates, uses, and can radiate radio frequency energy and, if not installed and used in accordance with the instruction manual, may cause harmful interference to radio communications. Operation of this equipment in a residential area is likely to cause harm interference in which case the user will be required to correct the interference at his own expense. The device has been evaluated to meet general RF exposure statement. The device can be used in portable exposure condition without restriction

6.2 ISED NOTICE (Canada)

English: This device contains licence-exempt transmitter(s)/receiver(s) that comply with Innovation, Science and Economic Development Canada's licence-exempt RSS(s). Operation is subject to the following two conditions: 1) This device may not cause interference. 2) This device must accept any interference, including interference that may cause undesired operation of the device. C RF exposure statement: The device has been evaluated to meet general IC RF exposure requirement. The device can be used in portable exposure condition without restriction. French: Émetteur/récepteur exempt de licence contenu dans le présent appareil est conforme aux CNR d'Innovation, Sciences et Développement économique Canada applicables aux appareils radio exempts de licence. L'exploitation est autorisée aux deux conditions suivantes : 1) L'appareil ne doit pas produire de brouillage; 2) L'appareil doit accepter tout brouillage radioélectrique subi, même si le brouillage est susceptible d'en compromettre le fonctionnement. C Déclaration d'exposition aux RF: L'appareil a été évalué pour répondre aux exigences générales d'exposition aux RF d'IC. L'appareil peut être utilisé dans des conditions d'exposition portable sans restriction.

WARNING

Please pay attention to electrical safety. Do not disassemble, crush or puncture the battery. This product is not a toy. Bitte achten Sie auf elektrische Sicherheit. Zerlegen, zerquetschen oder durchstechen Sie die Batterie nicht. Dieses Produkt ist kein Spielzeug. Veuillez noter la sécurité électrique. Ne pas démonter, écraser ou piquer la batterie. Ce produit n'est pas un jouet. Si prega di prestare attenzione alla sicurezza elettrica. Non smontare, schiacciare o perforare la batteria. Questo prodotto non è un giocattolo. Preste atención a la seguridad del consumo de electricidad. No retire, triture o pinche la batería. Este producto no es un juguete. Lützen elektrik güvenliğine dikkat edin. Batıyı dađıtma, yıkma veya yumruklama. Bu ürün oyuncak deđil. Var uppmärksam på elsäkerheten. Ta inte isär, krossa eller punktera batteriet. Den här produkten är ingen leksak. Let op elektrische veiligheid. Demonteer, verpletter of prik de batterij niet. Dit product is geen speelgoed. Proszę zwrócić uwagę na bezpieczeństwo elektryczne. Nie demontuj, nie miażdż ani nie przebijaj akumulatora. Ten produkt nie jest zabawką.

Warning: Operation of this equipment in a residential environment could cause radio interference.

Special Notes

The company assumes full responsibility for the revision and explanation of this manual, exercising utmost diligence to guarantee its accuracy. Nevertheless, please note that any technical improvements to the product may not be separately notified, and that the images of the product, accessories, software interfaces, etc. in this manual serve solely as illustrations and references. Due to product updates and upgrades, the actual product may vary slightly from the images. Please refer to the physical product for accurate representations.