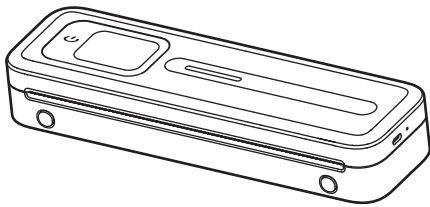


Quick Start Guide

M832D
Portable Printer

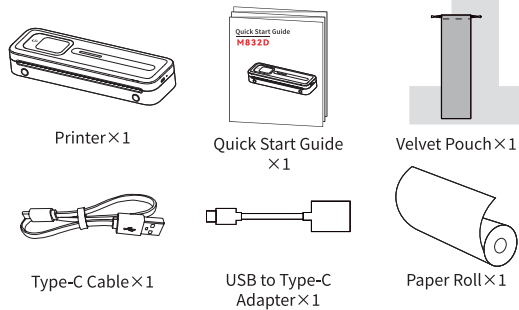


HVIN:M832D

English

1.Product Introduction

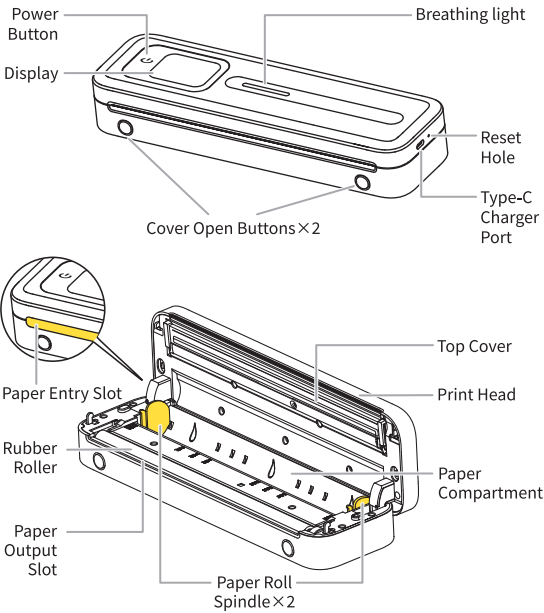
1.1 Packing List



Type-C data cable and USB adapter have been placed in a velvet bag.

The paper roll has been placed inside the printer.

1.2 Printer Parts Instruction



2. Getting Started

2.1 Downloading the App

Method 1:Search for the "Phomemo" app on App Store® or Google Play™ for download and installation.



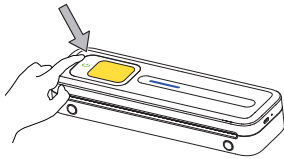
Method 2:Scan the QR code.
You can scan the code using your cell phone's camera, the built-in QR code scanning feature of your browser,or a dedicated scanning app.



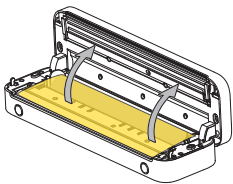
As the Safari browser on Apple devices does not support QR code scanning, please use your device's built-in QR code scanner instead.

2.2 Paper Installation Guide

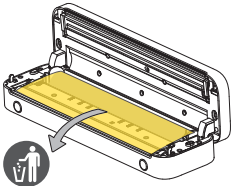
01 Long press the Power Button for 3 seconds until the Display lights up.



02 Press the cover open button with both hands and lift up the top cover.

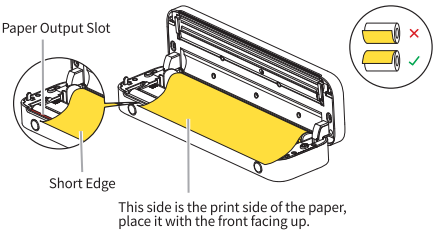


03 Remove the protective paper.

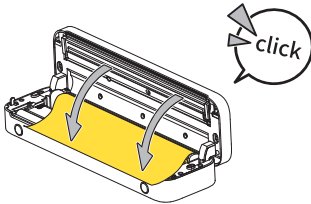


Please skip this step if your printer does not contain a disposable protective sheet due to different models.

04 Unroll the paper roll inside the printer and pull the paper head out higher than the paper exit.



05 Put the Top Cover back down, and press down on both of its ends at the same time until you hear a click, indicating the cover is securely closed.

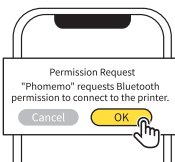


2.3 User Guide: Printing via Mobile App

01 Open the "Phomemo" app.



02 Grant permissions

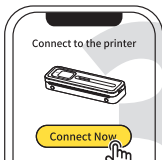


For more information about app permissions, see 4.3 Permission Description in the Online Guide.

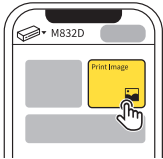
03 Wait for the printer to be searched.



04 Tap [Connect Now].



05 Connection successful. Please click [Print Image].



This is an example of printing an image. You can select other texts for printing based on your actual needs.

06 Edit your first image, and tap [OK] after you finish editing.



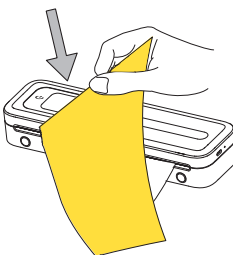
07 Confirm the preview of the image, and tap [Print].



08 Printing is completed.



09 Tear open the printed paper.

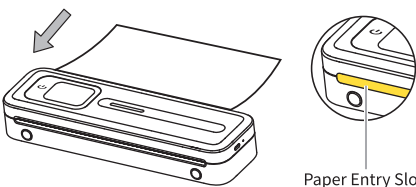


The software interface is for reference only. Please refer to the actual operating page for accurate information.

3. Instructions for using single-sheet thermal paper

Detailed paper usage instructions, please refer to the electronic manual 3. "Paper types and usage instructions".

After turning on the printer, please insert the paper with text facing down and flat into the paper input until the printer automatically feeds the paper. The paper loading is complete.



The printer supports different types and sizes of paper. Please refer to the e-Manual for instructions.

The printed content will not appear on the side that reads "non-printing side"

4. Additional Instructions

4.1 Button Instructions

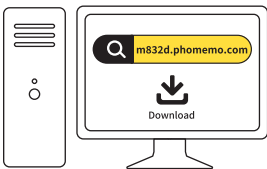
Button Type	Operation	Function
Power Button	Long press for 3s	Power on/off
	Double press when printer is on	Print a self-test page

4.2 Indicator Light Instructions

Breathing light status	Meaning	Advised Action
Solid blue light	Functioning / Fully charged	/
Flashing blue light	Charging in progress	/
No light indication after long pressing Power Button for 3s	Battery depleted	Charge for 4h

5. Accessing Detailed Online Guide

Visit m832d.phomemo.com to access the Detailed Online Guide, video tutorials, and answers to FAQs.



6. Information to User

6.1 FCC INFORMATION (U.S.A.)

This device complies with part 15 of the FCC Rules. Operation is subject to the following two conditions: (1) this device may not cause harmful interference, and (2) this device must accept any interference received, including interference that may cause undesired operation.

Any changes or modifications not expressly approved by the party responsible for compliance could void the user's authority to operate the equipment.

NOTE: This equipment has been tested and found to comply with the limits for a Class B digital device, pursuant to Part 15 of the FCC Rules. These limits are designed to provide reasonable protection against harmful interference in a residential installation. This equipment generates, uses and can radiate radio frequency energy and, if not installed and used in accordance with the instructions, may cause harmful interference to radio communications. However, there is no guarantee that interference will not occur in a particular installation.

If this equipment does cause harmful interference to radio or television reception,which can be determined by turning the equipment off and on, the user is encouraged to try to correct the interference by one or more of the following measures:

- Reorient or relocate the receiving antenna.
- Increase the separation between the equipment and receiver.
- Connect the equipment into an outlet on a circuit different from that to which the receiver is connected.

-- Consult the dealer or an experienced radio/TV technician for help. The device has been evaluated to meet general RF exposure statement.

The device can be used in portable exposure condition without restriction

6.2 ISED NOTICE (Canada)

- English:

This device contains licence-exempt transmitter(s)/receiver(s) that comply with Innovation, Science and Economic Development Canada's licence-exempt RSS(s). Operation is subject to the following two conditions:

- (1) This device may not cause interference.
- (2) This device must accept any interference, including interference that may cause undesired operation of the device.

IC RF exposure statement:

The device has been evaluated to meet general IC RF exposure requirement. The device can be used in portable exposure condition without restriction.

- French:

L' émetteur/récepteur exempt de licence contenu dans le présent appareil est conforme aux CNR d' Innovation, Sciences et Développement économique Canada applicables aux appareils radio exempts de licence. L' exploitation est autorisée aux deux conditions suivantes :

- 1) L' appareil ne doit pas produire de brouillage;
- 2) L' appareil doit accepter tout brouillage radioélectrique subi, même si le brouillage est susceptible d' en compromettre le fonctionnement

IC Déclaration d'exposition aux RF:

L'appareil a été évalué pour répondre aux exigences générales d'exposition aux RF d'I.C. L'appareil peut être utilisé dans des conditions d'exposition portable sans restriction.

Special Notes

The company assumes full responsibility for the revision and explanation of this manual, exercising utmost diligence to guarantee its accuracy. Nevertheless, please note that any technical improvements to the product may not be separately notified, and that the images of the product, accessories, software interfaces, etc. in this manual serve solely as illustrations and references. Due to product updates and upgrades, the actual product may vary slightly from the images. Please refer to the physical product for accurate representations.