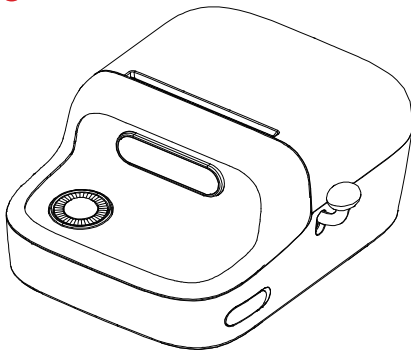


Quick Start Guide

M150



EN

1. Product Introduction

1.1 Packing List



•Single unit

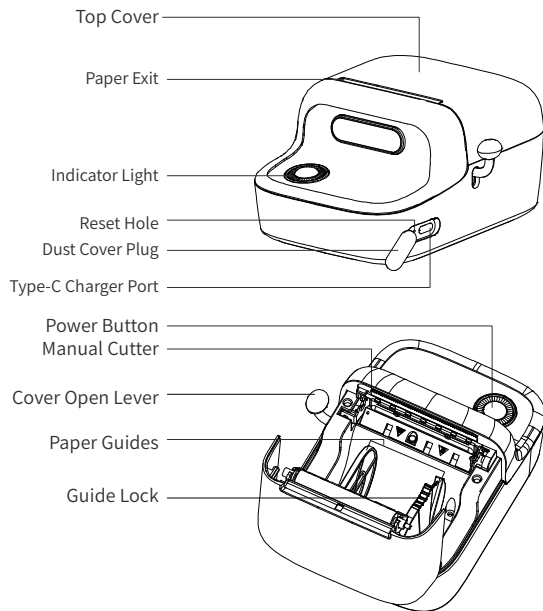


or

•Package



1.2 Printer Parts Instruction



2. Getting Started

2.1 Downloading the App

Method 1

Search for the "Print Master" app on App Store™ or Google Play™ to download and install it.



Print Master



GET IT ON Google Play



Method 2

Scan the QR code to download the app.



2.2 User Guide

01 Remove the protective film.

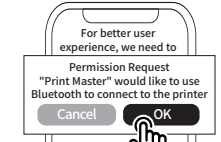


①Note: This step is required for first use.

03 Open the "Print Master" app.

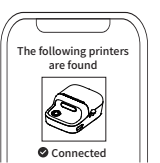


05 Grant permissions.



①Note: For more information about app permissions, see 6.2 Permission Description in the Online Guide.

07 Connected.



09 Printing is completed.

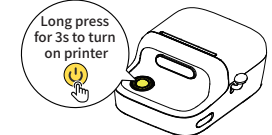


11 Remove the liner.



3. Replacing the Paper Roll

01 To turn on the printer, long press the Power Button for three seconds until the Indicator Light is on.



02 Open the "Print Master" app.



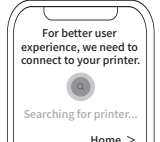
02 Long press the Power Button for 3 seconds until the Display lights up.



04 Tap [Auto Connect].



06 Wait for the printer to be connected.

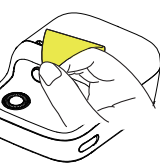


①Note: You can also find manual connection options on [Home]. For more details, see 4. More Connection Methods in this guide.

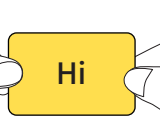
08 Edit your first label, and tap [Print] after you finish editing.



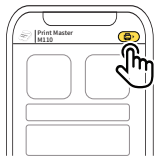
10 Tear off the label along the Paper Exit.



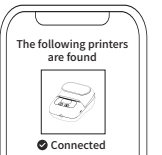
12 Attach the label to a dry, flat surface.



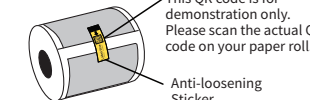
03 Tap [] at the top right corner for connection.



05 Connected.

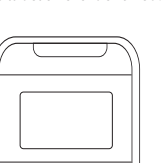


07 Take out the unused paper roll from the printer.

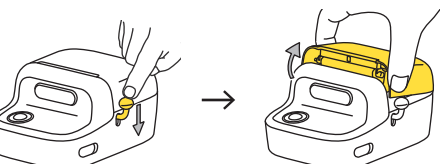


①Note: For boxed paper rolls purchased separately, please see 4. Identifying Label Sizes in the Online Guide for instructions on how to quickly access the editing page.

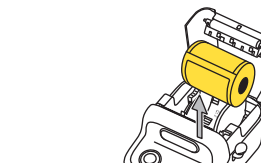
09 The label size is identified.



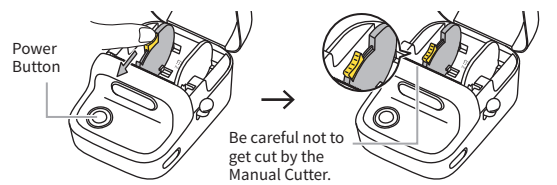
10 Press down the Cover Open Lever to open the Top Cover.



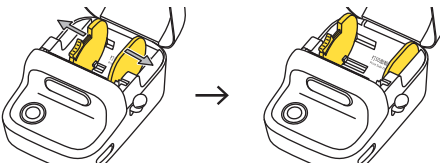
11 Remove the existing paper roll in the Paper Compartment.



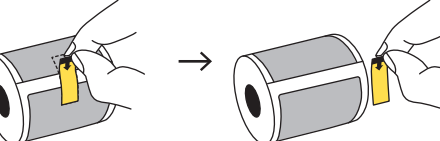
12 Push the Guide Lock towards the Power Button until you hear a click to unlock the Guides.



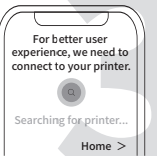
13 Slide the Guides outwards as far as they can go.



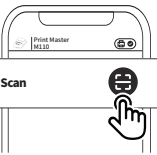
14 Remove the Anti-loosening Sticker from the paper roll.



04 Wait for the printer to be connected.



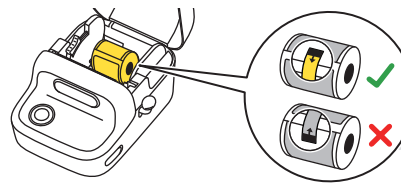
06 Go to "Home" and tap [Scan].



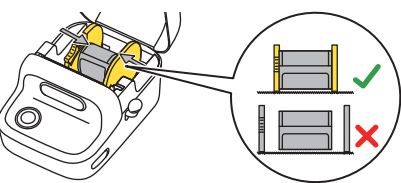
08 Aim the scanning frame at the QR code on the paper roll's Anti-loosening Sticker.



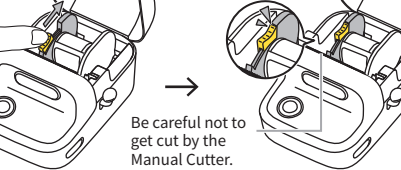
15 Place the paper roll in the Paper Compartment.



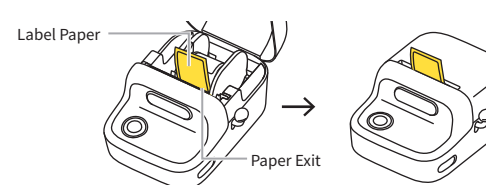
16 Slide the Guides inwards to the edges of the paper roll.



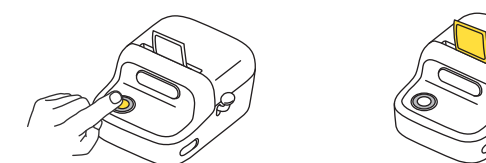
17 Push the Guide Lock towards the Paper Compartment Cover until you hear a click to lock the Guides.



18 Extend the label paper out above the Paper Outlet and then close the Top Cover.



19 The Paper Exit will auto-calibrate the label and adjust the paper roll to the right position.



4. More Connection Methods

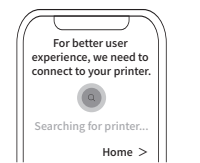
01 Select your printer.



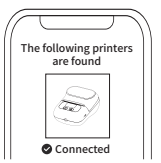
02 Tap [] at the top right corner for connection.



03 Wait for the printer to be connected.



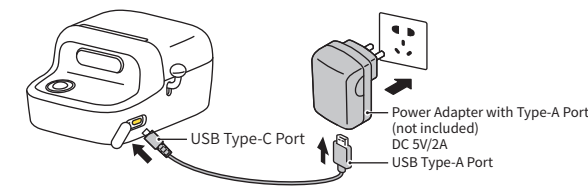
04 Connected.



5. Charging Instructions

1. Please prepare your own power adapter (DC 5V/2A) with a Type-A port.
2. Insert the Type-C end (flat end) of the USB cable into M150's Type-C Charger Port and plug the Type-A end (narrow end) into the Type-A port of the power adapter.
3. Upon connecting the printer to an outlet using the power adapter, please check the status of the Indicator Light: A slow flashing white light indicates that the printer is off, while a fast-flashing white light indicates that the printer is on.
4. To ensure quick usage, please charge the printer for at least 20 minutes. For a complete charge, wait for 2-3 hours or until the Indicator Light is solid white.
5. As the printer may heat up during charging, avoid placing it on materials such as cotton or linen while charging.
6. Once the battery is fully charged, please unplug it promptly.

①Note: Using the printer while charging will slow down the charging speed. To preserve battery life, it is not advisable to print while charging.



6. Accessing Detailed Online Guide

Method 1 Visit downloadapp.qu-in.top/Ph to access the Detailed Online Guide, video tutorials, and answers to FAQs.



Method 2 Scan the QR code to access the Detailed Online Guide, video tutorials, and answers to FAQs.



7. FCC INFORMATION (U.S.A.)

This device complies with Part 15 of the FCC Rules. Operation is subject to the following two conditions:

(1) This device may not cause harmful interference, and (2) this device must accept any interference received, including interference that may cause undesired operation.

NOTE 1: This equipment has been tested and found to comply with the limits for a Class B digital device, pursuant to part 15 of the FCC Rules. These limits are designed to provide reasonable protection against harmful interference in a residential installation. This equipment generates, uses and can radiate radio frequency energy and, if not installed and used in accordance with the instructions, may cause harmful interference to radio communications. However, there is no guarantee that interference will not occur in a particular installation. If this equipment does cause harmful interference to radio or television reception, which can be determined by turning the equipment off and on, the user is encouraged to try to correct the interference by one or more of the following measures:

- Reorient or relocate the receiving antenna.
- Increase the separation between the equipment and receiver.
- Connect the equipment into an outlet on a circuit different from that to which the receiver is connected.
- Consult the dealer or an experienced radio/TV technician for help.

NOTE 2: Any changes or modifications to this unit not expressly approved by the party responsible for compliance could void the user's authority to operate the equipment.

The device has been evaluated to meet general RF exposure requirement. The device can be used in portable exposure condition without restriction.

8. ISED NOTICE (Canada)

CAN ICES-003(B)/NMB-003(B)

"This device complies with Industry Canada's license-exempt RSSs. Operation is subject to the following two conditions:

- (1) This device may not cause interference; and
- (2) This device must accept any interference, including interference that may cause undesired operation of the device."

« Le présent appareil est conforme aux CNR d'Industrie Canada applicables aux appareils radio exempts de licence. L'exploitation est autorisée aux deux conditions suivantes : (1) l'appareil ne doit pas produire de brouillage, et (2) l'utilisateur de l'appareil doit accepter tout brouillage radioélectrique subi, même si le brouillage est susceptible d'en compromettre le fonctionnement. »

The device has been evaluated to meet general RF exposure requirement. The device can be used in portable exposure condition without restriction.

L'appareil a été évalué pour répondre aux exigences générales en matière d'exposition aux RF. L'appareil peut être utilisé en condition d'exposition portable sans restriction.

Special Notes

The company takes full responsibility for the revision and explanation of this manual, with utmost care taken to ensure its accuracy. However, please note that any technical improvements to the product may not be separately notified, and that the images of the product, accessories, software interfaces, etc. in this manual are for illustrative purposes and reference only. Due to product updates and upgrades, the actual product may be slightly different from the images. Please rely on the actual product for all details.