

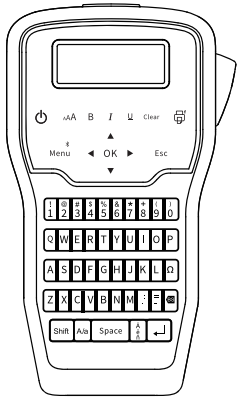
User Manual

LM2800

Thank you for choosing our label maker (here in after referred to as the "Label Maker"). The label maker produces professional, high-quality, durable labels. In addition, the variety of tape cartridges available allows you to print labels with different widths and exciting colors.

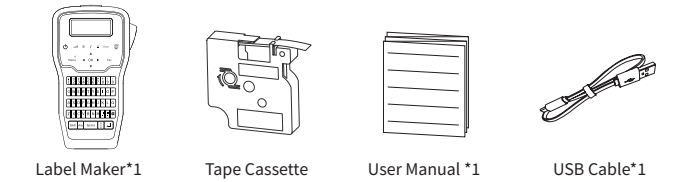
Please read this guide, including the product safety guide, before using this label maker. After reading this guide, keep it in a safe place.

For FAQs, troubleshooting, and to download software and manuals, please visit our official website.



1. Product Introduction

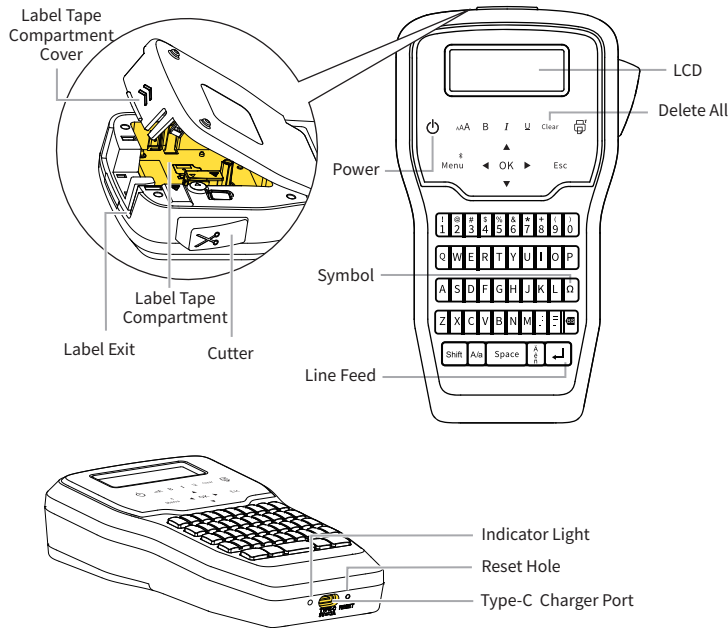
1.1 Packing List



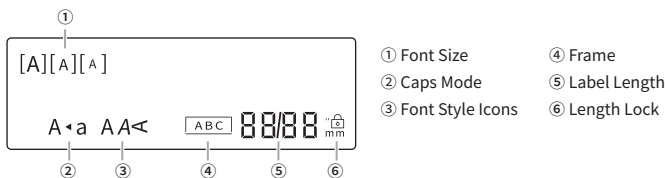
① • The Tape Cassette have been placed in the machine.
• The quantity of included Tape Cassette is subject to the actual delivery.

1.2 Printer Parts Instruction

01- KEYBOARD

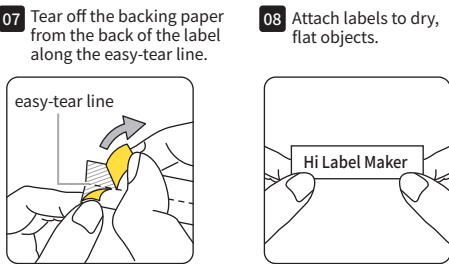
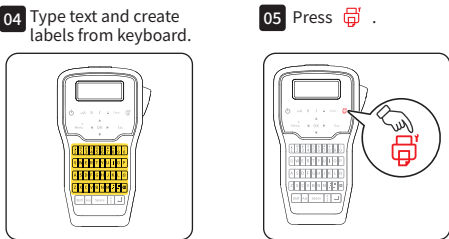
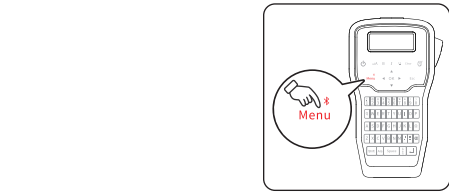
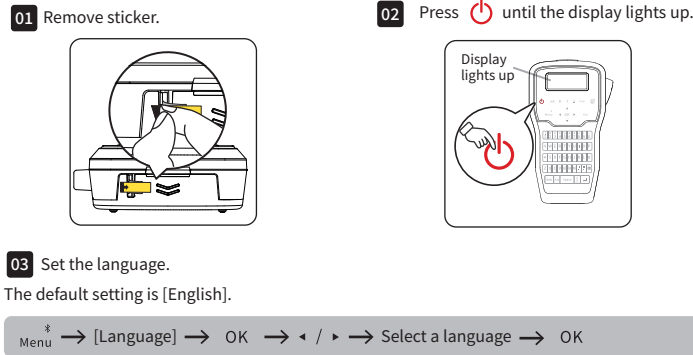


02- LCD



2. Use the Label Maker

2.1 Print from the Label Maker



2.2 Print from Your Mobile Device

01- Downloading the App

Method 1: Search for the "Print Master" app on App Store® or Google Play™ to download and install it.

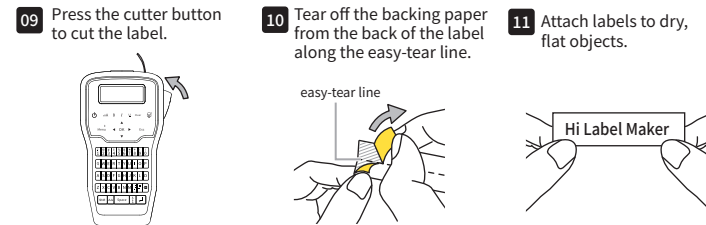
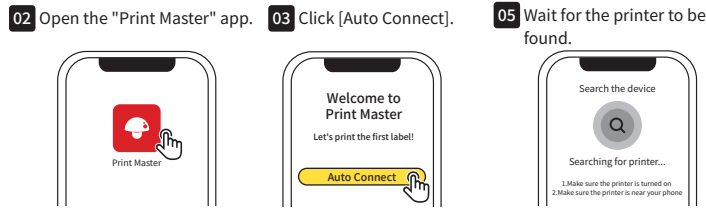
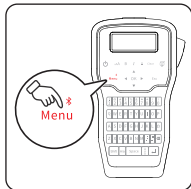
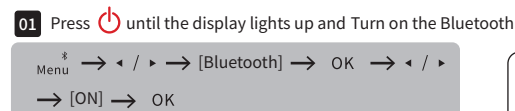


Method 2: Scan the QR code to download the app. Simply scan the code with your cell phone's camera, the built-in scanning feature of your browser, or a dedicated scanning app.

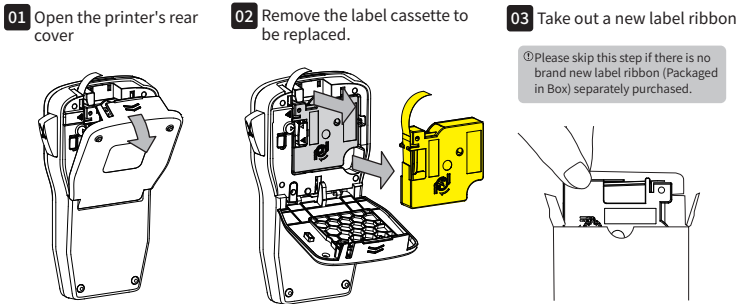


① As the Safari browser on Apple devices does not support direct QR code scanning, please use your device's built-in QR code scanner instead.

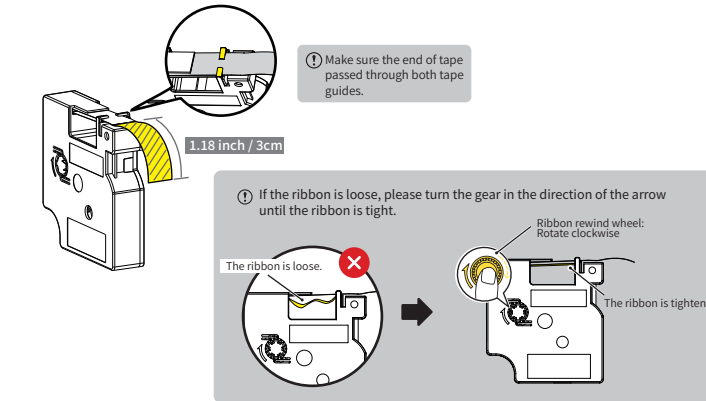
02- User Guide



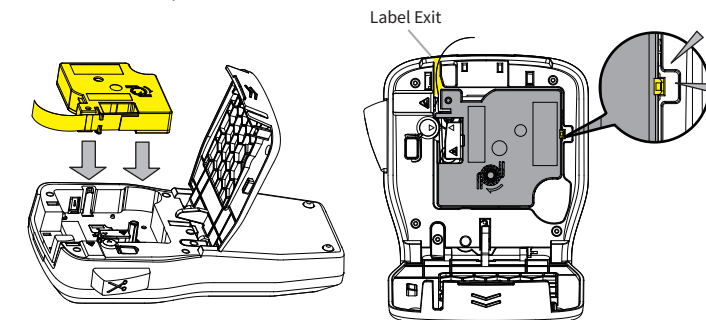
3. Replacing the Label Ribbon



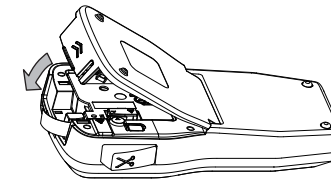
04 Pull the tape out through the tape guides about 1" (3cm)



05 Place the Label Tape into the Label Tape Compartment and feed the extended label into the Paper Exit, then press down on the Label Tape until you hear a click, indicating the installation is complete.



06 Close the printer's rear cover



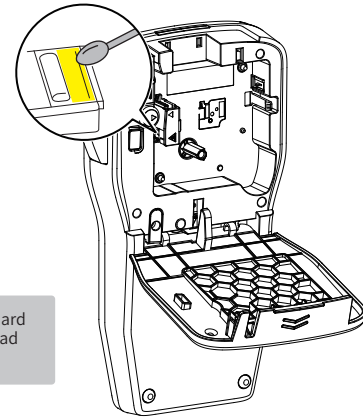
4. Cleaning and Maintenance

In case of blank prints, blurry text, and missing prints, please try cleaning the printer.

01. Before cleaning, ensure the printer is powered off and the label tape is removed. If you have just finished printing, wait for at least 30 minutes for the Print Head to cool down completely.

02. Use a cotton swab dipped in alcohol or a dedicated print head cleaning pen (requires separate purchase) to gently wipe the surface of the Print Head about 5 times, removing dust and stains.

03. Wait 5-10 minutes for the alcohol to fully evaporate before using it again.

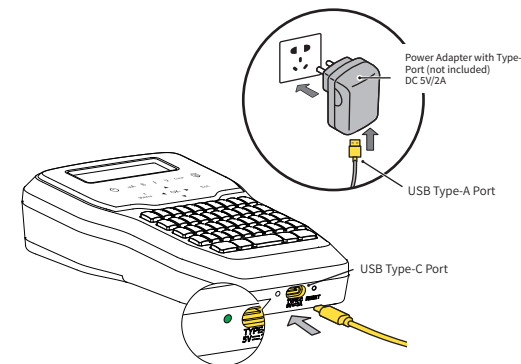


① Please avoid scraping the Print Head with any hard objects, as it may cause damage to the Print Head and worsen print quality.

5. Charging Instructions

1. Please prepare your own power adapter (DC 5V/2A) with a Type-A port.
2. Insert the Type-C Port (smaller end) of the USB cable into LM2800's Type-C charger port, and plug the Type-A Port (bigger end) of the USB cable into the Type-A port of the power adapter.
3. After connecting the printer to a power outlet through the power adapter, please check the status of the Indicator Light—a slow flashing green light indicates that the printer is on, while a fast flashing green light indicates that the printer is off.
4. Please charge the printer for at least 20 minutes for immediate use. Charging will be completed in 2 to 3 hours, or when the indicator light stays solid green.
5. As the printer may heat up during charging, avoid placing it on materials such as cotton or linen while charging.
6. Once the battery is fully charged, please unplug it promptly.

① • Using the printer while charging will slow down the charging speed.
• To preserve battery life, it is not advisable to print while charging.



6. Basic Operations

6.1 Set the language

The default setting is [English].

Menu → [Language] → OK → < / > → Select a language → OK

The Label Maker supports setting languages for 23 countries. [Cestina/Dansk/Deutsch/English/Español/Français/Hrvatski/Italiano/Magyar/Nederlands/Norsk/PolSKI/Português/Română/Slovenski/Slovensky/Suomi/Svenska/Türkçe/Eestlane/Lettish/Lietuvos/Português Brasil]

