

M02X Mini Printer

Quick Start Guide

HVIN:M02X

Before using, please read this manual carefully and keep it properly for future reference.

01. Packing list

English

- ①Printer*1 ②power cord*1 ③paper holder baffle*1 ④printing paper*1 roll ⑤Manual*1



02. Machine description

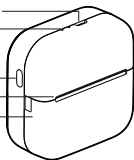
Type-C interface

Indicator light

Power button

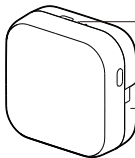
Paper outlet

Paper bin cover



Reset button

Paper bin cover



Power indicator status description	Green lighting form	Standby/Charging completed
	Green flashing	Charging
	Red lighting form	Fault: out of paper/overheated
	Red flashing	Out of power

2.1. Precautions

- ① Please use 5V=2A input for charging, and it is recommended to use mobile phone power adapter for charging.
- ② Please connect the USB cable to the power adapter before charging, Please gently insert or unplug the charging cable when charging, to prevent excessive force from damaging the port.
- ③ After the charging is completed, please unplug the charging cable in time.
- ④ In order to avoid danger, do not use or charge in the environment of high temperature, high humidity, heavy smoke and dust, such as in bathroom, steam room, near to open flame, etc.
- ⑤ Improper charging may cause damage to the print head.
- ⑥ Do not touch the print head to prevent scalding caused by overheating.
- ⑦ The tearing blade is sharp, please be careful to avoid touching it by mistake.
- ⑧ If the machine is malfunctioning, insert the reset hole to restart the machine.

2.2. Battery warning instructions

- * It is forbidden to disassemble, hit, squeeze the battery, or throw it into fire.
- * If severe swelling occurs, please do not reuse it.
- * Do not place in a high temperature environment, and it is strictly prohibited to use the battery after soaking in water.
- * There is a danger of explosion if the battery is replaced by the wrong type. Be sure to dispose of the used battery according to the instructions.
- * If consumers use a power adapter for power supply, they should purchase a power adapter that meets the requirements of corresponding safety standards or a power adapter with CCC certification.

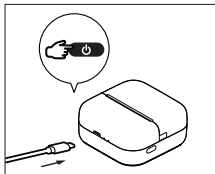
03. APP download method

English

Please search for "Phomemo" in APP store, download and install it.

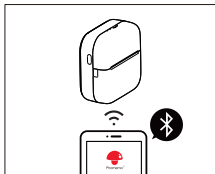
1. Search for Phomemo in the Apple App Store, click to download and install.
2. Search for Phomemo in the Google App Store, click to download and install.

04. App connection method



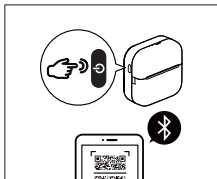
1. Please charge the printer for the first use, and then press and hold the power button for about 3 seconds to turn it on

2. Connect the machine



Method 1:

Turn on the Bluetooth of a phone → open the Phomemo APP → click the icon in the upper right corner of Phomemo APP main interface → select M02X in the list to connect → complete the machine connection



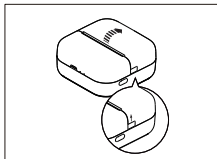
Method 2:

After starting up, double-click the start-up button printing QR code → scan the code in the Phomemo APP to connect

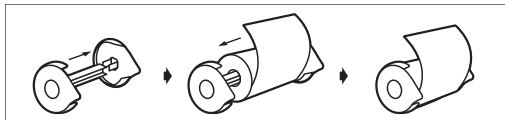
Tips:

User can view the usage tutorial in the APP, and connect the machine according to video operation

05. How to replace the printing paper



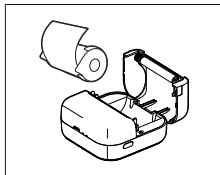
1. Open the top cover and take out printing paper



2. Remove the adjuster on the right side

3. Load the printing paper

4. Install the adjuster on the right side



5. Put the printing paper into the paper compartment of the machine and close the top cover

*Tips: How to distinguish the front and back of printing paper

- ① Take out a printing paper and use your nails to scratch the paper firmly, and then install with the color side up.
- ② Please make sure that the smooth surface is facing up and aligned with the printing port.

FCC Warning statement:

This device complies with part 15 of the FCC Rules. Operation is subject to the following two conditions:(1) This device may not cause harmful interference, and (2) this device must accept any interference received, including interference that may cause undesired operation.

Any Changes or modifications not expressly approved by the party responsible for compliance could void the user's authority to operate the equipment.

This equipment has been tested and found to comply with the limits for a Class B digital device, pursuant to part 15 of the FCC Rules. These limits are designed to provide reasonable protection against harmful interference in a residential installation. This equipment generates uses and can radiate radio frequency energy and, if not installed and used in accordance with the instructions, may cause harmful interference to radio communications. However, there is no guarantee that interference will not occur in a particular installation. If this equipment does cause harmful interference to radio or television reception, which can be determined by turning the equipment off and on, the user is encouraged to try to correct the interference by one or more of the following measures:

- Reorient or relocate the receiving antenna.
- Increase the separation between the equipment and receiver.
- Connect the equipment into an outlet on a circuit different from that to which the receiver is connected.
- Consult the dealer or an experienced radio/TV technician for help.

FCC RF exposure statement:

The device has been evaluated to meet general RF exposure requirement. The device can be used in portable exposure condition without restriction.

IC Warning statement:

This device contains licence-exempt transmitter(s)/receiver(s) that comply with Innovation, Science and Economic Development Canada's licence-exempt RSS(s). Operation is subject to the following two conditions:

1. This device may not cause interference.
2. This device must accept any interference, including interference that may cause undesired operation of the device.

L'émetteur/récepteur exempt de licence contenu dans le présent appareil est conforme aux CNR d'Innovation, Sciences et Développement économique Canada applicables aux appareils radio exempts de licence. L'exploitation est autorisée aux deux conditions suivantes:

1. L'appareil ne doit pas produire de brouillage;
2. L'appareil doit accepter tout brouillage radioélectrique subi, même si le brouillage est susceptible d'en compromettre le fonctionnement.

RF exposure statement

IC RF exposure statement:

The device has been evaluated to meet general IC RF exposure requirement. The device can be used in portable exposure condition without restriction.

IC Déclaration d'exposition aux RF:

L'appareil a été évalué pour répondre aux exigences générales d'exposition aux RF d'IC. L'appareil peut être utilisé dans des conditions d'exposition portable sans restriction.