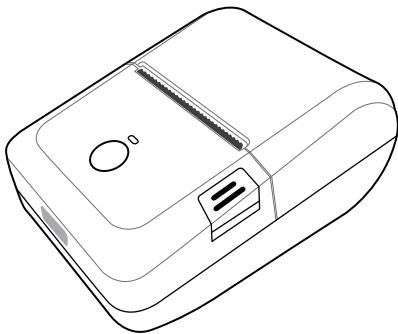


peripage

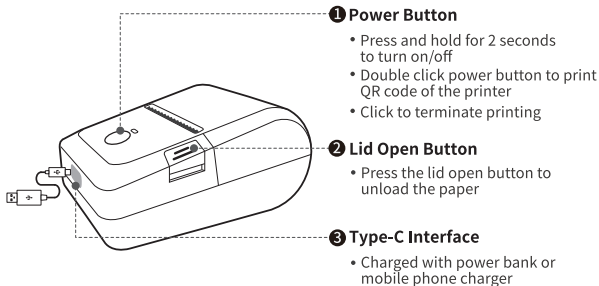


INSTRUCTION MANUAL

Contents

English	P01-P05
中文简体	P06-P11
中文繁體	P12-P15
日本語	P16-P19
한국어	P20-P23
ไทย	P24-P27
Française	P28-P31
Deutsch	P32-P35
Русский	P36-P39
Español	P40-P43
Português	P44-P47
Italiano	P48-P51

Product Sketch



Power Indicator Status

- Green light is always on: Normal status/Full charge
- Blue light is always on: Bluetooth is connected
- Red light is always on: Paper shortage, Overheating, or Charging
- Red light flashing: Low power, please charge it promptly

App Printing

Step 1: App Download

Please search for [PeriPage] on Google Play or App Store, or scan the following QR code to download the App.



App Download



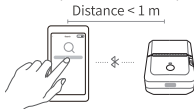
Video Guide

Step 2: Connect the App to the printer

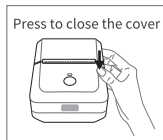
- 1 Press and hold the power button for 2 seconds to turn on the printer.
- 2 Open the [PeriPage] App, go to the device connection interface, and click to connect to the discovered printer. Alternatively, press the power button twice to print the QR code, then connect the printer by scanning the code.

(Tip: Do not connect the printer through the mobile phone's Bluetooth settings.)

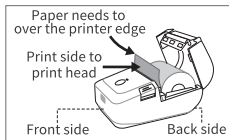
- 3 After the printer is connected, open the function provided by the App to operate Bluetooth printing.



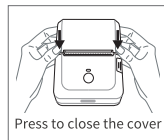
Open Cover to Change Paper



❶ Open the Cover



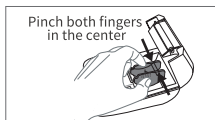
❷ Put Paper



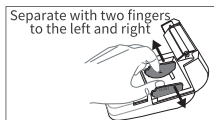
❸ Close the Cover

Paper Holder

(Small paper rolls need to be centered and jammed in the paper holder to avoid distortion of the contents due to print offset.)



❶ Shrink the Paper Bin

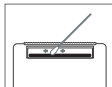


❷ Enlarge Paper Bin

Charging Instructions

- 5V \Rightarrow 2A input. It is recommended to use a mobile phone charger for charging.
- It is recommended to fully charge the battery before using.
- If the printer has not been used for a long time, please charge it every 3 months to avoid long-term natural wear and tear, which can prevent the lithium batteries from being charged.

Clean the Printer Head



- ❶ Please turn off the printer and open the printer cover and take out the paper.
- ❷ Dip a cotton cloth or cotton swab with medical alcohol, and wipe gently along the center to the periphery of the printer head.
- ❸ After cleaning the printer head, do not use the printer immediately. Please wait for 1 to 2 minutes, use the printer after the alcohol has completely evaporated.

Information to User

This device complies with part 15 of the FCC Rules. Operation is subject to the following two conditions: (1) This device may not cause harmful interference, and (2) this device must accept any interference received, including interference that may cause undesired operation.

Note

This equipment has been tested and found to comply with the limits for a Class B digital device, pursuant to part 15 of the FCC Rules. These limits are designed to provide reasonable protection against harmful interference in a residential installation. This equipment generates, uses and can radiate radio frequency energy and, if not installed and used in accordance with the instructions, may cause harmful interference to radio communications. However, there is no guarantee that interference will not occur in a particular installation. If this equipment does cause harmful interference to radio or television reception, which can be determined by turning the equipment off and on, the user is encouraged to try to correct the interference by one or more of the following measures:

- Reorient or relocate the receiving antenna.
- Increase the separation between the equipment and receiver.
- Connect the equipment into an outlet on a circuit different from that to which the receiver is connected.
- Consult the dealer or an experienced radio/TV technician for help.

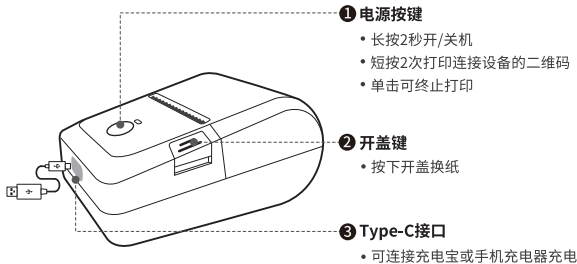
Important

Change or modifications not expressly approved by the manufacturer responsible for compliance could void the user's authority to operate the equipment.

FCC Radiation Exposure Statement

The device has been evaluated to meet general RF exposure requirement. The device can be used in portable exposure condition, compliance with exposure requirements.

产品简图



电源指示灯状态介绍

- 绿灯常亮: 开机正常/充满电
- 蓝灯常亮: 蓝牙已连接
- 红灯常亮: 缺纸/过热/充电中
- 红灯闪烁: 低电量, 请及时充电

App打印

第一步:App下载

应用宝/华为/小米/VIVO/OPPO/苹果等应用商店搜索【爱立熊】
或扫描下方二维码下载。



扫码下载
安装【爱立熊】App



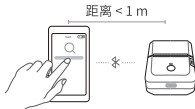
扫码观看
操作视频



微信扫码
获取更多产品使用信息

第二步:App连接打印

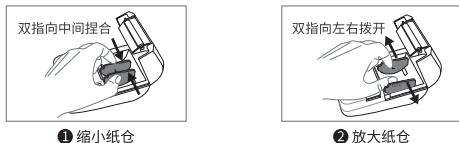
- 1 长按电源按键2秒,将打印机开机。
- 2 打开【爱立熊】App,进入连接设备界面,点击连接搜索到的打印机。
或短按2次电源按键打印二维码,通过扫码连接打印机。
(注:请勿在手机蓝牙设置里搜索连接打印机蓝牙)
- 3 打印机连接上后,打开App提供的功能模块即可操作蓝牙打印。



开盖换纸



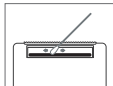
卡位器 (小纸卷需卡位器居中卡住, 以免打印偏移导致内容变形)



充电说明

- 5V=2A输入充电, 建议使用手机充电器进行充电。
- 建议购买后第一次使用时, 请先充满电。
- 长时间未使用, 请间隔3个月充一次电, 以免锂电池长时间自然损耗无法充电。

清洗打印头



- ❶ 请关机后打开打印机纸仓盖,取出打印纸。
- ❷ 将棉布或者棉棒沾上医用酒精,沿着打印头中央到四周的方向轻轻擦拭。
- ❸ 清洁打印头后,不要立即使用打印机,请等候1~2分钟,待酒精完全挥发后方可使用。

注意



注意!撕纸刀片有尖锐边缘,请小心勿触防止割伤。



注意!热零部件!打印完成后,请勿直接接触打印头,以防过热烫伤。关闭电源后等待半小时才能接触打印头。



此产品需在成人监护下使用。

警告!

- 本产品出厂标配不包含电源适配器,若使用电源适配器充电,应购买使用获得CCC认证且满足标准的电源适配器。
- 如果换用不正确的型号的电池组会有爆炸的危险。
- 请不要将电池投入火中或加热炉中,请勿对电池进行机械挤压或切割进行处置。
- 请不要将电池放置在可能导致电池爆炸或泄漏可燃液体或气体的极高温环境中。
- 请不要将电池放置在可能导致电池爆炸或泄漏可燃液体和气体的极低气压中。
- 在居住环境中,运行此设备可能会造成无线电干扰。

“三包”服务政策(中国大陆地区)

出现非人为损坏的外观问题或性能故障,享有国家规定的三包服务。

消费者自签收之日起:

- 7日内,可退货、更换或维修。
- 15日内,可更换或维修。
- 1年内,可免费维修。

不符“三包”服务范围

- 因不可抗力造成的损坏。
- 未经授权的维修/拆装等。
- 长期(约3个月)未充电可能导致电池自然耗尽,无法激活充电的。

电子信息产品有毒有害物质申明

有毒有害物质或元素	塑胶外壳	线路板	内部线缆	电池
铅 (Pb)	○	×	○	○
汞 (Gg)	○	○	○	○
镉 (Cd)	○	○	○	○
六价铬 (Cr6+)	○	○	○	○
多溴联苯 (PBB)	○	○	○	○
多溴二苯醚 (PBDE)	○	○	○	○

本表格依据SJ/T 11364的规定编制

○: 表示该有害物质在该部件所有均质材料中的含量在GB/T 26572-2011规定的限量要求以下。

×: 表示该有毒物质至少在某一均质材料中的含量超出GB/T 26572-2011规定的限量要求。



本产品环保使用期限为10年,在环保使用期限内可以放心使用,超出环保使用期限之后则应该进入回收循环系统。

产品保修卡(主卡)

厂家留存联

产品SN码 _____

用户姓名 _____

联系方式 _____

购买日期 _____

售出终端 _____

报修日期	故障及处理	维修员

注:该保修卡仅限中国大陆地区使用

产品保修卡(副卡)

用户留存联

产品SN码 _____

用户姓名 _____

联系方式 _____

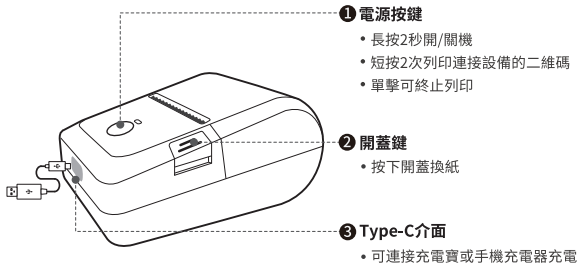
购买日期 _____

售出终端 _____

注:该保修卡仅限中国大陆地区使用



產品簡圖



電源指示燈狀態介紹

- 綠燈常亮：開機正常/充滿電
- 藍燈常亮：藍牙已連接
- 紅燈常亮：缺紙/過熱/充電中
- 紅燈閃爍：低電量，請及時充電

App列印

第一步:App下載

應用寶/華為/小米/VIVO/OPPO/蘋果等應用商店搜索【愛立熊】
或掃描下方二維碼下載。



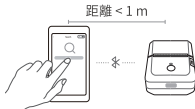
掃碼下載
安裝【愛立熊】App



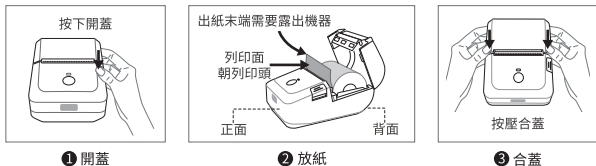
掃碼觀看
操作視頻

第二步:App連接列印

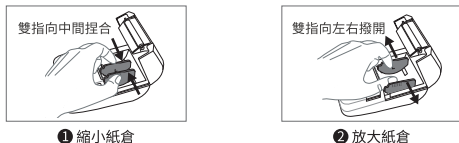
- 1 長按電源按鍵2秒,將印表機開機。
- 2 打開【愛立熊】App,進入連接設備界面,點擊連接搜索到的印表機。
或短按2次電源按鍵列印二維碼,通過掃碼連接印表機。
(註:請勿在手機藍牙設置裏搜索連接印表機藍牙)
- 3 印表機連接上後,打開App提供的功能模塊即可操作藍牙列印。



開蓋換紙



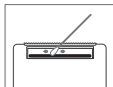
卡位器 (小紙卷需卡位器居中卡住, 以免列印偏移導致內容變形。)



充電說明

- 5V=2A輸入充電，建議使用手機充電器進行充電。
- 建議購買後第一次使用時，請先充滿電。
- 長時間無使用，請間隔3個月充一次電，以免鋰電池長時間自然損耗無法充電。

清洗列印頭



- ❶ 請關機後打開印表機紙倉蓋，取出列印紙。
- ❷ 將棉布或者棉棒沾上醫用酒精，沿著列印頭中央到四周的方向輕輕擦拭。
- ❸ 清潔列印頭後，不要立即使用印表機，請等候1~2分鐘，待酒精完全揮發後方可使用。

注意



注意! 撕紙刀片有尖锐边缘, 请小心勿触防止割伤。



注意! 熱零部件! 列印完成後, 請勿直接接觸列印頭, 以防過熱燙傷。關閉電源後等待半小時才能接觸列印頭。



此產品需在成人監護下使用。

警告!

- 本產品出廠標配不包含電源供應器，若使用電源供應器充電，應購買使用獲得當地認證且滿足標準的電源供應器。
- 如果換用不正確的型號的電池組會有爆炸的危險。
- 請不要將電池投入火中或加熱爐中，請勿對電池進行機械擠壓或切割進行處置。
- 請不要將電池放置在可能導致電池爆炸或洩漏可燃液體或氣體的極高溫度環境中。
- 請不要將電池放置在可能導致電池爆炸或洩漏可燃液體和氣體的極低氣壓中。
- 在居住環境中，運行此設備可能會造成無線電干擾。

Attention



Attention! The paper tearing blade has sharp edges. Please be careful not to touch it to avoid injury.



Attention! Hot parts! After printing, do not touch the print head to avoid overheating and burns. Turn off the power and wait for half an hour before touching the print head.



This product must be used under adult supervision.

Warning!

- This product does not come with a power adapter. If you need to charge it using a power adapter, please purchase and use one that is locally certified and meets the required standards.
- Using an incorrect battery pack can be dangerous.
- Please do not put the battery into a fire or heating furnace, and do not dispose of the battery mechanically or by cutting.
- Please do not expose the battery to extremely high temperatures, as this may cause it to leak combustible liquids or gases.
- Please do not expose the battery to extremely low air pressure, as this may cause it to leak combustible liquids or gases.
- Using this device in a residential area may cause radio interference.



Xiamen iLead Tek Co., Ltd.

廈門愛立得科技有限公司

廈門愛立得科技有限公司

Unit 2101, No.50 Chengyi North Street,

Software Park Phase III, Xiamen, Fujian, P.R.C

廈門市软件园三期誠毅北大街50号2101单元01室

廈門市软件园三期誠毅北大街50號2101單元01室

☎ www.ileadtek.com

✉ service@ileadtek.com

V1.0