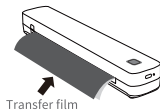


peripage

① Hold for 2s



② Print side up



③ App printing



<https://www.ileadtek.com/en/download.html>

PeriPage Tattoo Transfer Printer User Manual

Product Sketch

① Power Button

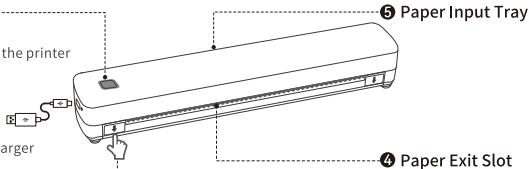
- Press and hold for 2 seconds to turn on/off
- Double click power button to print QR code of the printer
- Click to cancel printing (when printing)
- Click to eject paper (after loading paper)

② Type-C Interface

- Charged with power bank or mobile phone charger

③ Hinged Cover End

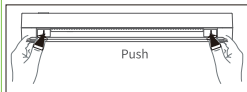
- Push to open the cover in the direction of the arrow. In the reverse direction, close the cover
- If there is a paper jam or the print head needs cleaning, please open the cover for operation



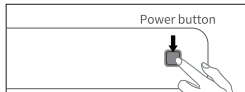
Power Indicator Status

- Light blue light stays on: Normal startup
- Blue light stays on: Bluetooth is connected
- Green light is always on: Full charge
- Red light is always on: Overheating/Charging
- Red light flashing slowly: Low battery. Please charge in time

Paper Installation Instructions



① Ensure the lid is closed tightly.



② Press and hold the power button for 2 seconds to turn on.



③ Align with the paper feed slot and insert until it is drawn in and cannot be pulled out. (Note: If a paper jam occurs, press the hinged cover end to remove the paper.)

App Printing

Step 1: App Download

Please search for [PeriPage] on Google Play or App Store, or scan the following QR code to download the App. Then watch the video guide below.



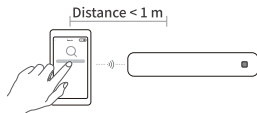
App Download



Video Guide

Step 2: App Connects to Printer

- 1 Press and hold the power button for 2 seconds to turn on the printer.
- 2 Open the [PeriPage] App, enter the interface of connecting the device, and click to connect the found printer. Or press the power button twice to print the QR code, then connect the printer by scanning the code.
(Tips: Don't connect printer in the mobile phone bluetooth settings.)
- 3 After the printer is connected, open the function provided by the App to operate Bluetooth printing.



PC Printing

- 1 Press and hold the power button for 2 seconds to turn on the printer. Connect the printer and computer with the original Type-C data cable.
- 2 Please visit the official website, <https://www.ileadtek.com/en/download.html>, to download and install the printer driver for editing and printing.
- 3 After the driver is installed, select this printer when print documents on the computer.


Charging Instructions

- Input: 5V \approx 2A. It is recommended to use a mobile phone charger for charging.
- It is recommended to fully charge the battery before use.
- To avoid natural degradation and inability to charge, please recharge the battery every 3 months during periods of non-use.

Notes

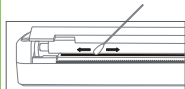
- This product does not come with a power adapter. If you need to charge it using a power adapter, please purchase and use one that is locally certified and meets the required standards.
- Using an incorrect battery pack can be dangerous.
- Please do not put the battery into a fire or heating furnace, and do not dispose of the battery mechanically or by cutting.
- Please do not expose the battery to extremely high temperatures, as this may cause it to leak combustible liquids or gases.
- Please do not expose the battery to extremely low air pressure, as this may cause it to leak combustible liquids or gases.
- Using this device in a residential area may cause radio interference.

 Attention! The paper tearing blade has sharp edges. Please be careful not to touch it to avoid injury.

 Attention! Hot parts! After printing, do not touch the print head to avoid overheating and burns. Turn off the power and wait for half an hour before touching the print head.

 This product must be used under adult supervision.

Clean the Printer Head



- ❶ Please turn off the printer and open the printer lid and take out the paper.
- ❷ Dip a cotton cloth or cotton swab with medical alcohol, and wipe gently along the center to the periphery of the printer head.
- ❸ After cleaning the printer head, do not use the printer immediately. Please wait for 1 to 2 minutes, use the printer after the alcohol has completely evaporated.

Information to User

This device complies with part 15 of the FCC Rules. Operation is subject to the following two conditions: (1) This device may not cause harmful interference, and (2) this device must accept any interference received, including interference that may cause undesired operation.

Note

This equipment has been tested and found to comply with the limits for a Class A digital device, pursuant to Part 15 of the FCC Rules. These limits are designed to provide reasonable protection against harmful interference when the equipment is operated in a commercial environment. This equipment generates, uses, and can radiate radio frequency energy and, if not installed and used in accordance with the instruction manual, may cause harmful interference to radio communications. Operation of this equipment in a residential area is likely to cause harmful interference in which case the user will be required to correct the interference at his own expense.

- Reorient or relocate the receiving antenna.
- Increase the separation between the equipment and receiver.
- Connect the equipment into an outlet on a circuit different from that to which the receiver is connected.
- Consult the dealer or an experienced radio/TV technician for help.

Important

Change or modifications not expressly approved by the manufacturer responsible for compliance could void the user's authority to operate the equipment.

FCC Radiation Exposure Statement

This equipment complies with FCC radiation exposure limits set forth for an uncontrolled environment. This equipment should be installed and operated with a minimum distance of 20cm between the radiator and your body. This transmitter must not be co-located or operating in conjunction with any other antenna or transmitter.



Xiamen iLead Tek Co., Ltd.

厦门爱立得科技有限公司

廈門愛立得科技有限公司

Unit 2101, No.50 Chengyi North Street,

Software Park Phase III, Xiamen, Fujian, P.R.C

厦门市软件园三期诚毅北大街50号2101单元01室

廈門市軟件園三期誠毅北大街50號2101單元01室

☎ www.ileadtek.com

✉ service@ileadtek.com

☎ (+86)400-8550-520

V1.0