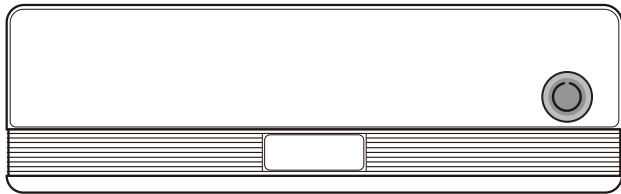


peripage

爱立能



使用说明书 INSTRUCTION MANUAL

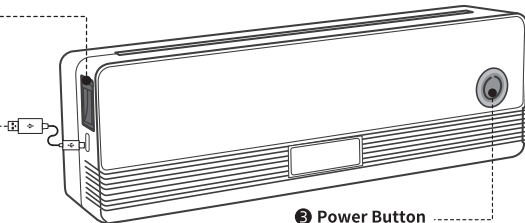
## Product Sketch

### ❶ Cover Open Button

- Push to open the cover and replace the paper

### ❷ Type-C Interface

- Charged with power bank or mobile phone charger



### ❸ Power Button

- Press and hold 2 seconds to turn on/off
- Double click to print device connection QR code
- Click to terminate printing

## Power Indicator Status

- White light stays on: Normal status
- Blue light stays on: The app is connected to the printer
- Red light stays on: Cover opened / No paper / Over-heat / Charging
- Red light flashing: Low battery, please charge in time

# App Printing

## Step 1: App Download

Please search for [PeriPage] on Google Play or App Store, or scan the following QR code to download the App.



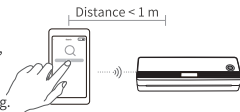
App Download



Video Guide

## Step 2: App Connects to Printer

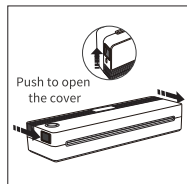
- 1 Press and hold the power button for 2 seconds to turn on the printer.
- 2 Open the [PeriPage] App, enter the interface of connecting the device, and click to connect to the discovered printer. Or press the power button twice to print the QR code, then connect the printer by scanning the code.  
(Tips: Don't connect printer in the mobile phone bluetooth settings.)
- 3 After the printer is connected, open the function provided by the App to operate printing.



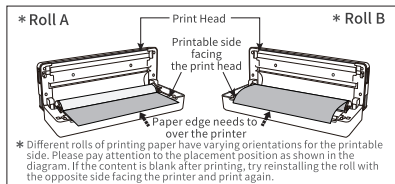
## PC Printing

- ① Press and hold the power button for 2 seconds to turn on the printer. Connect the printer and computer with the original Type-C data cable.
- ② Please visit the official website, <https://www.ileadtek.com/en/download.html>, to download and install the printer driver for editing and printing.
- ③ After the driver is installed, select this printer when print documents on the computer.

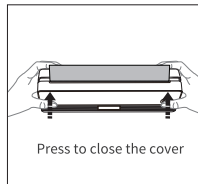
## Replace Paper



① Open the Cover

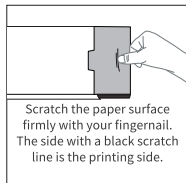


② Put Paper

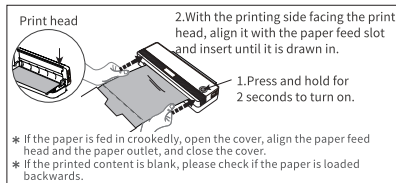


③ Close the Cover

## Separator Paper Installation Guide (Please ensure there is no rolled paper inside the printer)



❶ Confirm the printing side



❷ Loading Paper



❸ Tear Paper

## Charging Instructions

- 5V $\Rightarrow$ 2A input, recommend to use mobile phone charger for charging.
- Recommend to charge the battery fully before using.
- If printer has not been used for a long time, please charge it every 3 months, to avoid long-term natural wear and tear of lithium batteries can not be charged.

## Clean the Printer Head




- ❶ Please turn off the printer and open the printer cover and take out the paper.
- ❷ Dip a cotton cloth or cotton swab with medical alcohol, and wipe gently along the center to the periphery of the printer head.
- ❸ After cleaning the printer head, do not use the printer immediately. Please wait for 1 to 2 minutes, use the printer after the alcohol has completely evaporated.

## Warning!

- This product does not come with a power adapter. If you need to charge it using a power adapter, please purchase and use one that is locally certified and meets the required standards.
- There is a danger in using the incorrect battery pack.
- Please do not put the battery into the fire or heating furnace, and do not dispose of the battery mechanically or by cutting.
- Please do not place the battery at extremely high temperatures that may cause the battery or leak combustible liquids or gases.
- Please do not place the battery in extremely low air pressure that may cause the battery or leak combustible liquids and gases.
- Running this device in residence may cause radio interference.

 Attention! The paper tearing blade has sharp edges, please be careful not to touch it to prevent cutting.

 Attention! Hot parts! After printing, do not print the head directly to prevent overheating and scalding. Turn off the power and wait for half an hour to print the head.

 This product must be used under adult supervision.

**Information to User**

This device complies with part 15 of the FCC Rules. Operation is subject to the following two conditions: (1) This device may not cause harmful interference, and (2) this device must accept any interference received, including interference that may cause undesired operation.

**Note**

This equipment has been tested and found to comply with the limits for a Class B digital device, pursuant to part 15 of the FCC Rules. These limits are designed to provide reasonable protection against harmful interference in a residential installation. This equipment generates, uses and can radiate radio frequency energy and, if not installed and used in accordance with the instructions, may cause harmful interference to radio communications. However, there is no guarantee that interference will not occur in a particular installation. If this equipment does cause harmful interference to radio or television reception, which can be determined by turning the equipment off and on, the user is encouraged to try to correct the interference by one or more of the following measures:

- Reorient or relocate the receiving antenna.
- Increase the separation between the equipment and receiver.
- Connect the equipment into an outlet on a circuit different from that to which the receiver is connected.
- Consult the dealer or an experienced radio/TV technician for help.

**Important**

Change or modifications not expressly approved by the manufacturer responsible for compliance could void the user's authority to operate the equipment.



厦门爱立得科技有限公司  
廈門愛立得科技有限公司  
Xiamen iLead Tek Co., Ltd.

厦门市软件园三期诚毅北大街50号2101单元01室  
廈門市軟件園三期誠毅北大街50號2101單元01室  
Unit 2101, No.50 Chengyi North Street,  
Software Park Phase III, Xiamen, Fujian, P.R.C

☎ [www.ileadtek.com](http://www.ileadtek.com)      ✉ [service@ileadtek.com](mailto:service@ileadtek.com)

V1.0