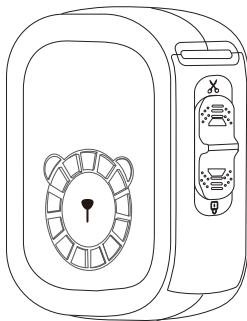




## PeriPage Numeric Label Maker

爱立熊数字标签机  
愛立熊數字標籤機



User Mamual  
使用说明书/使用說明書

Please scan the QR code to view the English manual.

请扫描二维码, 查看中文说明书。

請掃描二維碼, 查看中文說明書。

二次元コードを読んで、日本語の説明書をご覧ください。

QR코드를 스캔하여 한국어 설명서를 보십시오.

Bitte scannen Sie den QR-Code, um das Deutschland-Handbuch anzuzeigen.

Digitalize o código qr para ver o manual de instruções em português.

กรุณาสแกนรหัสภาษาไทยด้วย.

Veuillez scanner le code qr pour voir le manuel d' instruction en français.

Пожалуйста, сканируйте двухмерный код и проверьте русскую инструкцию.

Escanee el código qr para ver el manual de instrucciones en español.

Scannerizzare il codice qr e controllare le istruzioni per l' uso in italiano.

Silakan imbas kode QR untuk melihat manual bahasa Indonesia.

Sila imbas kod QR dan periksa arahan dalam bahasa Malay.

Xin vui lòng quét mã qr, xem thông số kỹ thuật việt nam.

Mangyaring i-scan ang QR code at suriin ang mga tagubilin sa wikang Pilipino.



# Product Sketch

## Power Button ⑤

- Long press for 2 seconds to turn on/off
- Short press twice to print the QR code of the connected device

## Character Key ④

- Press keys to input for printing

## Indicator Light ③

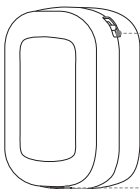


## ① Paper Outlet

- Paper width 15mm max

## ② Combination Push Button

- Push up to cut the paper
- Push down on the lid to unload the paper



## ⑥ Rope Hanging Hole

## ⑦ Type-C Charging Port

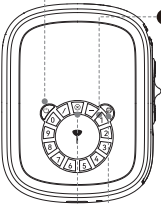
- Powered by a power bank or a mobile phone charger

## Power Indicator Status

- White light constantly on: Ready to print
- Blue light on: Bluetooth connected
- Green light on: Key input valid
- Red light on: Out of paper/Charging/
- Flashing red light: Low battery, please charge in a time



## Print via Keys

- 
- 1 Power Key:** Press and hold the power button for 2 seconds to turn on the printer.
  - 2 Character Key:** Freely input any existing numbers or symbols.
    - The input is valid when the green indicator light is on.
    - If there is a 30-second interval during input, the previously entered content will be automatically cleared.
    - The inputted content will be saved locally unless it is deleted or re-entered.
    - Set the character print size: Press and hold keys 1 to 5 individually for 5 seconds until the purple light flashes. Each key sets the print size from 1 to 5 accordingly.
  - 3 Print Key:** Prints the content that has been inputted.  
(Note: You can repeatedly press to print the content saved locally.)
  - 4 Delete Key:** Deletes all entered content, allowing for re-entry.

# App Printing

## Step1: App Download.

Please search for **[PeriPage]** on Google Play or App Store, or scan the following QR code to download the App. And watch the video guide below.



App Download



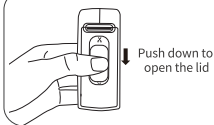
Video Guide

## Step2: App connects to printer

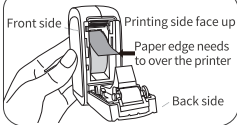
- 1 Press and hold the power button for 2 seconds to turn on the printer.
- 2 Open the **【PeriPage】**App, select **【Label Printer】** for the device, and follow the App prompts to search for printer Bluetooth and connect it. Alternatively, press the power button twice to print the QR code, and use the App to scan and connect to the printer.  
(Note: Do not search for printer Bluetooth in the Bluetooth settings.)
- 3 After connecting the printer, open the provided features in the app to operate the printing.

## Replace Paper

### ① Open the Lid



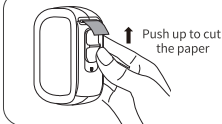
### ② Put the Paper



### ③ Close the Lid



### ④ Cut the Paper



## Charging Instructions

- Input: 5V $\pm$ 1A. It is recommended to use a mobile phone charger for charging.
- It is recommended to fully charge the battery before use.
- To avoid natural degradation and inability to charge, please recharge the battery every 3 months during periods of non-use.

## Notes

If an incorrect battery type is replaced, there is a risk of explosion. Do not expose the battery to excessive heat sources such as sunlight, fire, or similar conditions, and avoid exposing it to extremely low pressure, as this may lead to explosions or leakage of flammable liquids or gases.



The paper tearing blade has a sharp edge.  
Do not touch it to prevent getting cut.

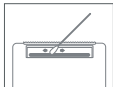


After printing, avoid direct contact with the print head to prevent overheating and potential scalding. Wait for at least thirty minutes after turning off the power before attempting to touch the print head.



The product is not suitable for children!

## Clean the Printer Head



- ❶ Please turn off the printer and open the printer cover, take out the paper;
- ❷ Dip a cotton cloth or cotton swab with medical alcohol, and wipe gently along the center to the periphery of the printer head;
- ❸ After cleaning the printer head, do not use the printer immediately. Please wait for 1 to 2 minutes, use the printer after the alcohol has completely evaporated.

## **Federal Communications Commission (FCC) Statement.**

This device complies with part 15 of the FCC Rules. Operation is subject to the following two conditions:

(1) This device may not cause harmful interference, and  
(2) this device must accept any interference received, including interference that may cause undesired operation. Note: This equipment has been tested and found to comply with the limits for a Class B digital device, pursuant to part 15 of the FCC Rules. These limits are designed to provide reasonable protection against harmful interference in a residential installation. This equipment generates, uses and can radiate radio frequency energy and, if not installed and used in accordance with the instructions, may cause harmful interference to radio communications. However, there is no guarantee that interference will not occur in a particular installation. If this equipment does cause harmful interference to radio or television reception, which can be determined by turning the equipment off and on, the user is encouraged to try to correct the interference by one or more of the following measures:

- Reorient or relocate the receiving antenna.
- Increase the separation between the equipment and receiver.
- Connect the equipment into an outlet on a circuit different from that to which the receiver is connected.
- Consult the dealer or an experienced radio/TV technician for help.

Warning: Changes or modifications made to this device not expressly approved by SAGE HUMAN ELECTRONICS INTERNATIONAL CO.,LTD may void the FCC authorization to operate this device. Note: The manufacturer is not responsible for any radio or TV interference caused by unauthorized modifications to this equipment. Such modifications could void the user's authority to operate the equipment.

RF exposure statement:

This device complies with FCC RF radiation exposure limits set forth for an uncontrolled environment. The device is installed and operated without restriction. This transmitter must not be co-located or operating in conjunction with any other antenna or transmitter. This equipment should be installed and operated with minimum distance 20cm between the radiator & your body.





Xiamen iLead Tek Co., Ltd.

廈門愛立得科技有限公司

廈門愛立得科技有限公司

Unit 2101, No.50 Chengyi North Street,  
Software Park Phase III, Xiamen, Fujian, P.R.C  
廈門市软件园三期誠毅北大街50号2101单元01室  
廈門市軟件園三期誠毅北大街50號2101單元01室

☎ [www.ileadtek.com](http://www.ileadtek.com)

✉ [service@ileadtek.com](mailto:service@ileadtek.com)

☎ (+86)400-8550-520

V1.0