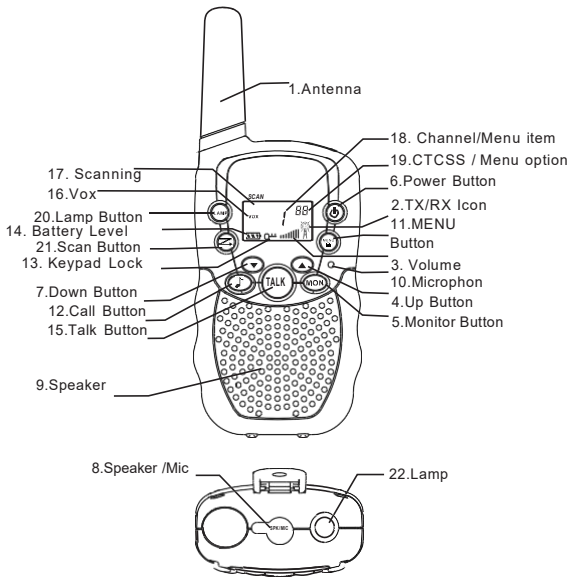


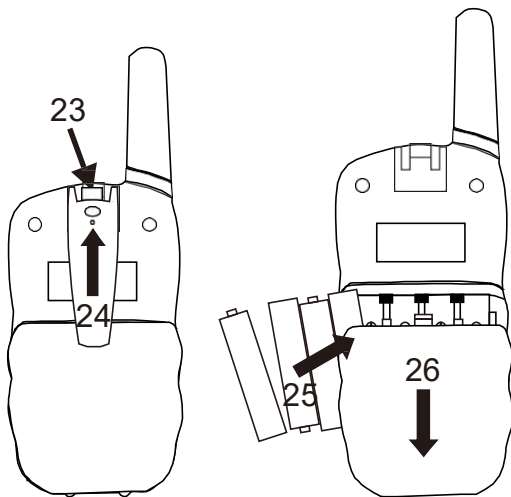
# TWO WAY RADIO MODEL:



# PIC 01



## PIC 02



## **EN~ Instructions for use**



**This set includes 2 walkie-talkie units: these are communication devices which operate on mobile radio frequencies. They come with 8/20/22(option) channels as well as a back-lit LCD screen, enabling you to communicate over several miles free-of-charge (up to 16 miles in open areas)**

**NOTE: Please read these user instructions carefully before using the equipment and retain for future consultation!**

### **SPECIFIC RECOMMENDATIONS**

- 1.If you carry any kind of personal medical device, consult a doctor before use.
- 2.To avoid the risk of burns, do not use the device if the aerial is damaged in any way.
- 3.Do not use the device in a potentially explosive setting (e.g.around petrol pumps, on the lower deck of a boat or around a fuel storage installation or chemical products).
- 4.If travelling in a car or by bike, stop before using the device.Switch off the device if on an aeroplane or in a hospital.
- 5.Never use the device in close proximity to a radio to avoid interference.
- 6.Remove the batteries if the device is not in use for an extended period of time. Do not mix old and new batteries and Do not mix alkaline,standard(carbon-zinc) or rechargeable(ni-cad, ni-mh, etc.)batteries.
- 7.Position the transmitter and antenna at least 5 cm from your face. Direct the antenna upwards and speak normally.
- 8.Clean the device with a damp cloth. Avoid the use of cleaning agents and solvents.
- 9.Do not modify the device in any way. In the event of damage occurring,ensure that the device is checked by a qualified professional.
- 10.The device cannot be used to contact the emergency services.

## **ITEM DESCRIPTION (Pic 01,02)**

1. Antenna
2. RX icon  -Displayed when receiving  
TX icon  -Displayed when transmitting
3. Volume level indicator
4. Adjustor button Up(▲)
5. Continued reception(MON)
6. On /off button(⏻)
7. Adjustor button Down(▼)
8. Earphone socket
9. Loudspeaker
10. Microphone
11. Menu:  
Enter the menu settings
12. Call button(CALL)
13. Keypad lock indicator
14. Battery level indicator
15. Push to talk (TALK)button
16. VOX indication
17. Scanning indication:  
Displayed during scan mode
18. Channel/Menu item indication
19. CTCSS /Menu option -value
20. Lamp Button
21. Scan Button
22. Lamp
23. Belt attachment clip
24. Belt attachment
25. Batteries(not supplied)
26. Battery compartment

## **BEFORE USE (Pic 02)**

To insert batteries into the devices, first remove the belt attachment: lift the attachment clip (23) and press the belt attachment upwards (24).

Open the battery compartment(26) and insert 4 AAA batteries (25) (not supplied), ensuring that the poles are correctly aligned. Then close the lid.

## **USING THE TWINTALKER**

**1.Turning the device on/off:** To turn the devices on or off, hold down the on/off button (6) for 3 seconds a BEEP sound will be played to confirm.

**2.Adjusting the volume:** To increase the volume, press the Up adjustor button ▲ (4) and press the Down ▼ (7) button to decrease volume.

**Note:** The volume level (3) is displayed on the screen.

### **3.Receiving/transmitting communications:**

The devices are in 'Reception' mode when lit up, i.e. they are ready to receive a call or sound transmitted on the activated frequency.

When you press the Call tone button (**12**), the device switches to 'Transmission' mode. You are then transmitting a sound signal to the other device.

To send a voice message, press the TALK button (**15**) and speak into the microphone (**10**). Continue to press the button until you have finished transmitting your message.

Hold the microphone a minimum of 5 cm from your face.

#### **Note:**

- The other device must be set to the same channel and have set the same CTCSS code(see point 7)
- When the transmission is complete and the TALK button (**15**) is no longer held down, the other device will emit a sound (BEEP) to indicate that this device is ready to transmit.

### **4.Changing Channels**

Press the **MENU** button (**11**)once, the current channel number flashes on the display.

Press the - **▲** button (**4**) or the - **▼** button (**7**) to change the channel.

Press the **TALK** - button to (**15**) confirm and return to stand-by Mode.

**Note:**If no button is pressed within 15 seconds during setting, the unit will return to standby.

### **5.CTCSS (Continuous Tone Coded Squelch System)**

License free radio's operating on the 462 MHz frequency band, like the Twintalker , have 22 available radio channels. If there are many radio's users in your neighborhood, there is a chance that some of these

users are operating on the same radio channel. To prevent that you receive signals from other users, sub-channels have been integrated.

Two radio's will only be able to communicate with each other when they are operating on the same radio channel and when they have selected exactly the same sub-channel. There are two kind of sub-channels :

### Continuous Tone Coded Squelch System (CTCSS)

When using CTCSS, a low frequency tone (between 67 and 250 Hz) will be transmitted along with the voice signal. There are 38 available tones to choose from. You are free to choose one of these 38 available tones. Due to filtering, these tones will generally not be audible so they will not disturb the communication.

## **6.CTCSS**

Press the MENU-button(11) twice : The current CTCSS code flashes on the display.

Press the ▲ -button(4) or the ▼ -button(7) to change to another code.

Press the TALK-button(15) to confirm and return to stand-by mode.

Note: To disable CTCSS, select code "0F" for CTCSS in the menu. When the entry is confirmed, "OF" will be displayed.

## **7.Monitor**

You can use the monitor feature to check for weaker signals in the current channel.

Press the MON-button to activate channel monitoring. Press the MON-button to stop channel monitoring.

Note: During channel monitoring the receiver circuit in the Radio's will not listen to CTCSS codes.



## **8. VOX Selection**

The Radio's is capable of voice activated (VOX) transmission. In VOX mode, the radio will transmit a signal when it is activated by your voice or other sound around you. VOX operation is not recommended if you plan to use your radio in a noisy or windy environment.

Note:VOX mode will be over rided when you press the TALK - button(15) .

Press the MENU- button(11) three times, the current VOX setting flashes on the display and the VOX icon is displayed.

Press ▲ - button(4) to set the VOX sensitivity level between 1 and 3 (level 3 is the most sensitive level).

Press ▼ - button(7) until "OF" appears on the display,to turn VOX OFF.

Press the TALK-button(15) to confirm and return to stand-by mode.

## **9. Scanning for an active radio channel**

Press the SCAN -button(21) : The 'Scan' function indicator (17) will appear on the screen and the channel (18) will scan continuously from 1 to 22.

Press the ▼ -button(7) to start the channel scan from 22 to 1.

Once an active channel is found, the scanning will stop and you can listen to the transmission.

When the transmission on the found channel stops, the scanning will resume automatically.

NOTE: If you press the TALK button(15) while listening to a found channel, the Radio's will go back in stand-by mode on the found channel.

## **10.Call Tones**

A call tone alerts others that you want to start talking.

### **10.1Setting the Call Tone**

The Twintalker has 10 call tones.

Press the MENU- button(11) four times, "CA" is displayed and the current call tone is flashing.

Press the ▲ -button(4) or the ▼ -button(7) to change to another Call Tone.

Press the TALK - button(15) to confirm and return to stand-by Mode.

### **10.2Sending a call Tone**

Press the CALL-button(12) briefly. The call tone will be transmitted on the set channel.

## **11. Key-Tone On/Off**

When a button is pressed, the unit will beep briefly. To set the key-tone.

Press the MENU- button(11) five times. "tO" will be displayed.

Press▲ to enable (ON) or ▼ disable the Key Tones (OF).

Press the TALK - button(15) to confirm your selection and return to the standby mode.

## **12. Roger Beep On/Off**

After the TALK-button is released, the unit will send out a roger beep to confirm that you have stopped talking.

To set the Roger Beep.

Press the MENU- button(11) six times. "rO" will be displayed.

Press ▲ to enable (ON) or ▼ disable the Roger Beep (OF).

Press the TALK - button(15) to confirm your selection and return to the standby mode.

### **13.Button Lock**

Press and hold the MENU- button(11) for two seconds to activate the Button lock mode. The button lock icon is displayed on the LCD Screen.

Press and hold the MENU- button(11) again for two seconds deactivate button lock

Note:The PTT - button(15) , the CALL -button(12), MON-button(5) and the on/off button (6) will still be functional when the Button Lock is activated.

### **14. Display back light**

To activate the backlight of the LCD display, press any button except the POWER- button(6).

The LCD backlight will light up for 5 seconds.

### **15. Earpiece connection**

The Twintalker can be used with the included earpiece.

The connector is located on the upper side of the unit(8) . Insert the earpiece plug into the connector (2,5mm jack).

The small button on the earpiece has the same function as the TALK - button(15) on the unit

When you use the TALK - button (15) from the Earpiece, you must also use the microphone from the earpiece to talk into.

Note:Do not connect other earpieces. This may damage your device.

### **16.Battery saving function:**

When the device has not been used for 6 seconds, the economy mode is automatically activated. This does not affect the reception of transmissions and the standard mode is automatically re- activated as soon as a signal is detected.

## **17.BUILT-IN FLASH LIGHT**

As an added feature,your Radio's has a built-in flashlight that can be used in sending light signals or for your lighting needs

## **18.Technical specifications**

**Sub-code**

**CTCSS 99**

**Range**

**Up to 16 miles(Open field)**

**Battery**

**4xAAA**

**Transmission Power**

**=< 500mW ERP**

**Modulation Type**

**FM-F3E**



Disposal of Old Electrical & Electronic Equipment (Applicable in the European Union and other European countries with separate collection systems)This symbol on the product or on its packaging indicates that this product shall not be treated as household waste. Instead it shall Be handed over to the applicable collection point for the

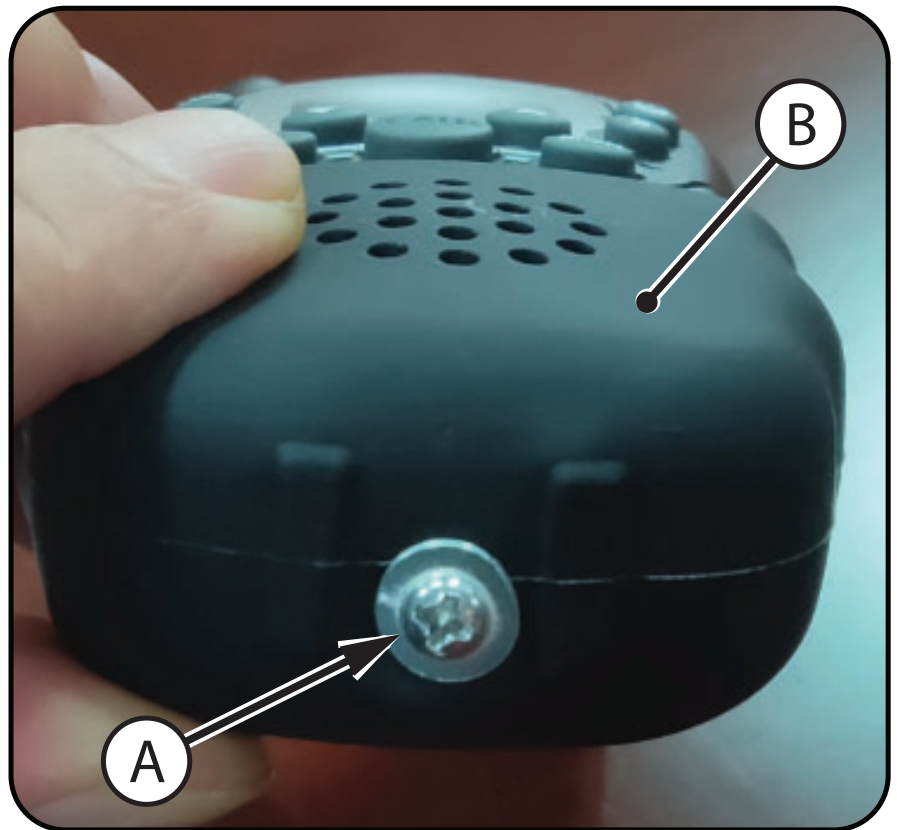
recycling of electrical and electronic equipment. By ensuring this product is disposed of correctly, you will help prevent potential negative consequences for the environment and human health, which could otherwise be caused by inappropriate waste handling of this product. The recycling of materials will help to conserve natural resources. For more detailed information about recycling of this product, please contact your local city office or your household waste disposal service.

### **International**

Blaak | 0 1 T tterdam | The Netherlands .

## TO CHANGE BATTERIES:

1. Remove bottom Screw (A) and gently pull off Cover (B) - set aside.
2. Push down and un-snap Battery Cover.
3. Replace Batteries with same size and orientation as called out in battery compartment.
4. Replace Battery Cover.
5. Reinstall Cover (B) fully and completely - install Screw.



**CAUTION!** Do not use product without bottom Cover screwed into place!

## PARA CAMBIAR LAS PILAS:

1. Quitar el tornillo inferior (A) y tire suavemente la cubierta (B) - reservado.
2. Empujar hacia abajo y ONU-ajustar la cubierta de la batería.
3. Sustituya las pilas con el mismo tamaño y orientación como se indica en el compartimento de la batería.
4. Sustituir la cubierta de la batería.
5. Reinstale la cubierta (B) totalmente - Instalar el tornillo.

**¡Precaución!** No utilice el producto sin tapa inferior atornillada en lugar!

## POUR CHANGER LES PILES :

1. Retirez la vis inférieure (A) et tirez doucement le couvercle (B) - mettre de côté.
2. Pousser vers le bas et l'ONU-le couvercle de batterie.
3. Remplacer les piles avec même taille et l'orientation comme dans le compartiment de la batterie.
4. Remplacer le couvercle de la batterie.
5. Remettre en place le couvercle (B) entièrement et complètement - poser la vis.

**Attention !** N'utilisez pas de produit sans couvercle vissé en place !

**Radio Frequency Warnings >>  
Fréquence radio mises en garde >>**

## US:

**(1)** Warning: Changes or modifications to this equipment not expressly approved by the party responsible for compliance could void the user's authority to operate the equipment.

**(2)** NOTE: This equipment has been tested and found to comply with the limits for a Class B digital device, pursuant to Part 15 of the FCC Rules. These limits are designed to provide reasonable protection against harmful interference in a residential installation. This equipment generates, uses and can radiate radio frequency energy and, if not installed and used in accordance with the instructions, may cause harmful interference to radio communications. However, there is no guarantee that interference will not occur in a particular installation. If this equipment does cause harmful interference to radio or television reception, which can be determined by turning the equipment off and on, the user is encouraged to try to correct the interference by one or more of the following measures:

- Reorient or relocate the receiving antenna.
- Increase the separation between the equipment and receiver.
- Connect the equipment into an outlet on a circuit different from that to which the receiver is connected.
- Consult the dealer or an experienced radio/TV technician for help.

**(3)** For body worn operation, this handset has been tested and meets the FCC RF exposure guidelines when used with the (manufacturer name) accessories supplied or designated for this product. Use of other accessories may not ensure compliance with FCC RF exposure guidelines.

**(4)** This device complies with Part 15 of the FCC Rules. Operation is subject to the following two conditions:

- (1)** this device may not cause harmful interference, and
- (2)** this device must accept any interference received, including interference that may cause undesired operation.

*This device contains licence-exempt transmitter(s)/receiver(s) that comply with Innovation, Science and Economic Development Canada's licence-exempt RSS(s). Operation is subject to the following two conditions:*

- 1. This device may not cause interference.*
- 2. This device must accept any interference, including interference that may cause undesired operation of the device.*

**Transmit no more than 50% of the time.  
Ne pas transmettre plus de 50% du temps.**

## CANADA:

**(5)** Cet appareil contient un émetteur/récepteur en conformité avec les licences exemptes de permis RSS d'Innovation, Sciences et Développement économique Canada. Son fonctionnement est soumis aux deux conditions suivantes : cet appareil ne doit pas émettre d'interférences; et cet appareil doit accepter toute interférence, y compris les interférences qui peuvent causer un mauvais fonctionnement de l'appareil.

**(6)** Pour une utilisation portée sur le corps, ce combiné a été testé et déclaré conforme aux directives d'exposition aux interférences (Canada RF, lorsqu'il est utilisé avec les accessoires de (manufacturer name) fournis ou conçus pour ce produit. L'utilisation d'autres accessoires peut ne pas être en conformité avec les directives d'Industrie Canada d'exposition aux interférences RF.