

P/N: 77-8001

CELLULAR SUPPORT

LTE-FDD (Cat-1): Bands B2/B4/B12

WCDMA: Bands B2/B4/B5

GLOBAL NAVIGATION SATELLITE SYSTEM (GNSS)

Supported Satellite Systems: GPS, Galileo, Baidu, GLONASS

Accuracy: Circular Error Probable (CEP-50) with open sky, <2.5 meters

Additional Features: Assisted GPS; WAAS Support

SENSOR DATA INTERFACES

Bluetooth 5

EXPECTED BATTERY LIFE

12 days with Solar Power (TBD)

6 days without Solar Power (TBD)

ELECTRICAL/POWER MANAGEMENT

Battery Operating Voltage: 3.3V to 4.2V

Battery Type: Li-ion, Rechargeable

- Nominal Voltage: 3.65 V
- Nominal Capacity: 19.2 Ah
- Maximum Voltage: 4.2
- Cell Cycle Life: ≥1000 cycles; ≥80% retention

Solar Input power: 6V nominal for battery charging

ENVIRONMENTAL

Ingress Protection Ratings: IP67 and IP69K (From trailer exterior)

Operating Temperature (Standard Charge): -4°F to 140°F (-20°C to 60°C)

Operating Temperature (Standard Discharge): -40°F to 158°F (-40°C to 70°C)

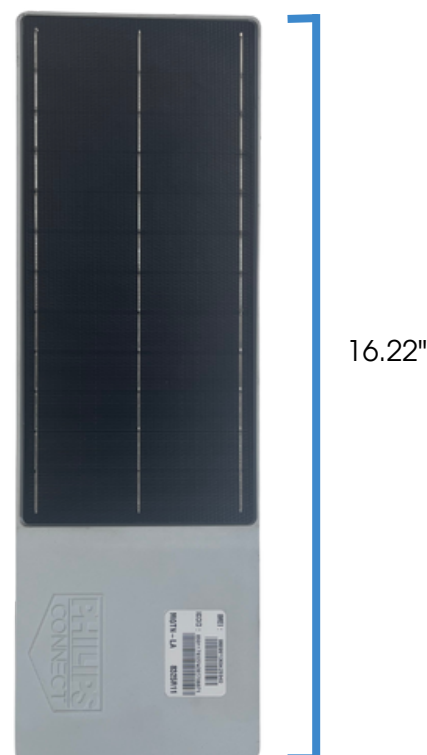
Storage Temperature:

- -4°F to 113°F (-20°C to 45°C) ≤ 3 months
- 14°F to 77°F (-10°C to 25°C) ≤ 1 year

MECHANICAL

Dimensions: 16.22 (L) x 4.89 (W) x 1.77" (D)
(164 mm x 80 mm x 39 mm)

Weight: ~2.2 lbs. 998 g



CERTIFICATIONS

FCC / IC

PTCRB

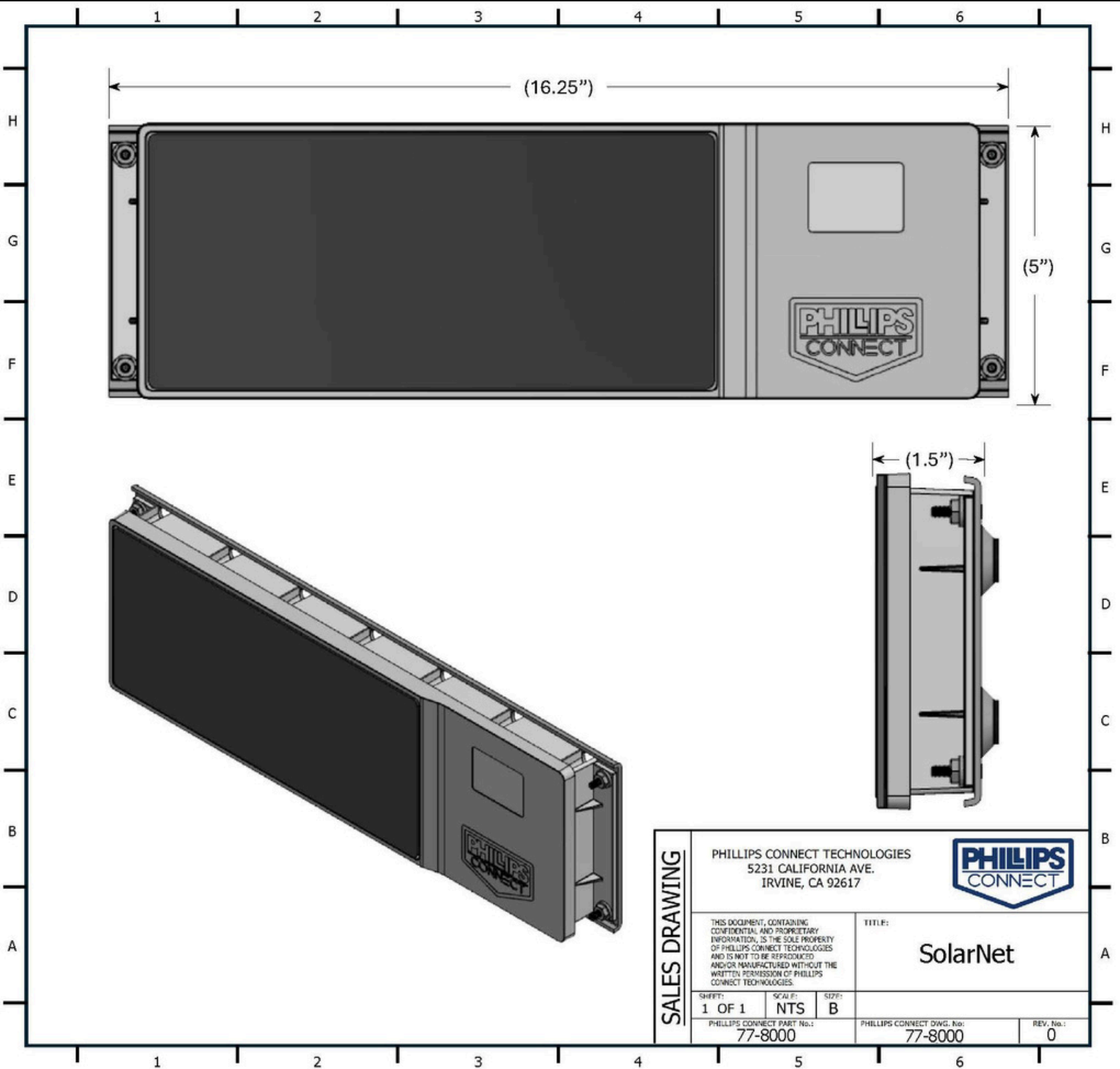
ATT network-ready

INTEGRATED GATEWAY SENSORS

- Integrated with a TPMS receiver
- Orientation
- Vibration
- Temperature
- Battery Voltage
- Solar Input Voltage
- GNSS Location
- GNSS Odometer
- Device Time via GNSS and NITZ



P/N: 77-8001



SALES DRAWING	PHILLIPS CONNECT TECHNOLOGIES 5231 CALIFORNIA AVE. IRVINE, CA 92617				
	THIS DOCUMENT, CONTAINING CONFIDENTIAL AND PROPRIETARY INFORMATION, IS THE SOLE PROPERTY OF PHILLIPS CONNECT TECHNOLOGIES AND IS NOT TO BE REPRODUCED AND/OR MANUFACTURED WITHOUT THE WRITTEN PERMISSION OF PHILLIPS CONNECT TECHNOLOGIES.			TITLE: SolarNet	
	SHEET: 1 OF 1	SCALE: NTS	SIZE: B		
	PHILLIPS CONNECT PART No.: 77-8000			PHILLIPS CONNECT DWG. No.: 77-8000	REV. No.: 0

FCC Regulations

This device complies with part 15 of the FCC Rules. Operation is subject to the following two conditions: (1) This device may not cause harmful interference, and (2) this device must accept any interference received, including interference that may cause undesired operation.

This equipment has been tested and found to comply with the limits for a Class B digital device, pursuant to part 15 of the FCC Rules. These limits are designed to provide reasonable protection against harmful interference in a residential installation. This equipment generates, uses and can radiate radio frequency energy and, if not installed and used in accordance with the instructions, may cause harmful interference to radio communications. However, there is no guarantee that interference will not occur in a particular installation. If this equipment does cause harmful interference to radio or television reception, which can be determined by turning the equipment off and on, the user is encouraged to try to correct the interference by one or more of the following measures:

- Reorient or relocate the receiving antenna.
- Increase the separation between the equipment and receiver.
- Connect the equipment into an outlet on a circuit different from that to which the receiver is connected.
- Consult the dealer or an experienced radio/ TV technician for help.

Changes or modifications not expressly approved by the manufacturer could void the user's authority to operate the equipment.

FCC RF Radiation Exposure Statement

This equipment complies with FCC radiation exposure limits set forth for an uncontrolled environment. To comply with FCC RF Exposure compliance requirements, this grant is applicable to only Mobile Configurations. The antennas used for the transmitter must be installed to provide a separation distance of at least 20cm from all persons and must not be co-located or operating in conjunction with any other antenna or transmitter.

Canada Regulations:

This device complies with Industry Canada's licence-exempt RSSs. Operation is subject to the following two conditions:

- (1) This device may not cause interference; and
- (2) This device must accept any interference, including interference that may cause undesired operation of the device.

Le présent appareil est conforme aux CNR d' Industrie Canada applicables aux appareils radio exempts de licence. L' exploitation est autorisée aux deux conditions suivantes :

- (1) l' appareil ne doit pas produire de brouillage;
- (2) l' utilisateur de l' appareil doit accepter tout brouillage radioélectrique subi, même si le brouillage est susceptible d' compromettre le fonctionnement.

Caution:

This transmitter must not be co-located or operating in conjunction with any other antenna or transmitter. This equipment should be installed and operated with a minimum distance of 20 centimeters between the radiator and your body.

Cet émetteur ne doit pas être Co-placé ou ne fonctionnant en même temps qu' aucune autre antenne ou émetteur. Cet équipement devrait être installé et actionné avec une distance minimum de 20 centimètres entre le radiateur et votre corps.