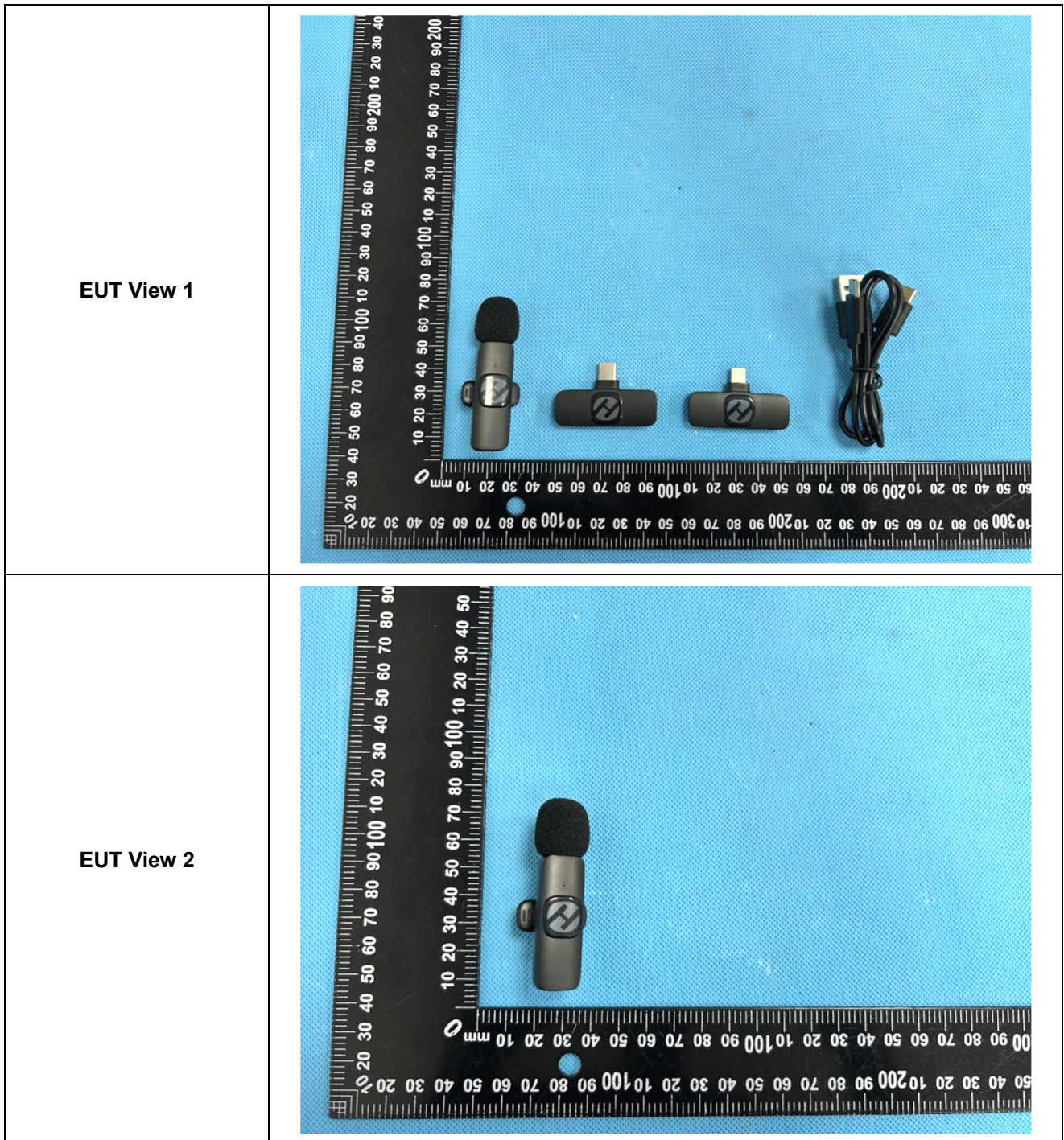
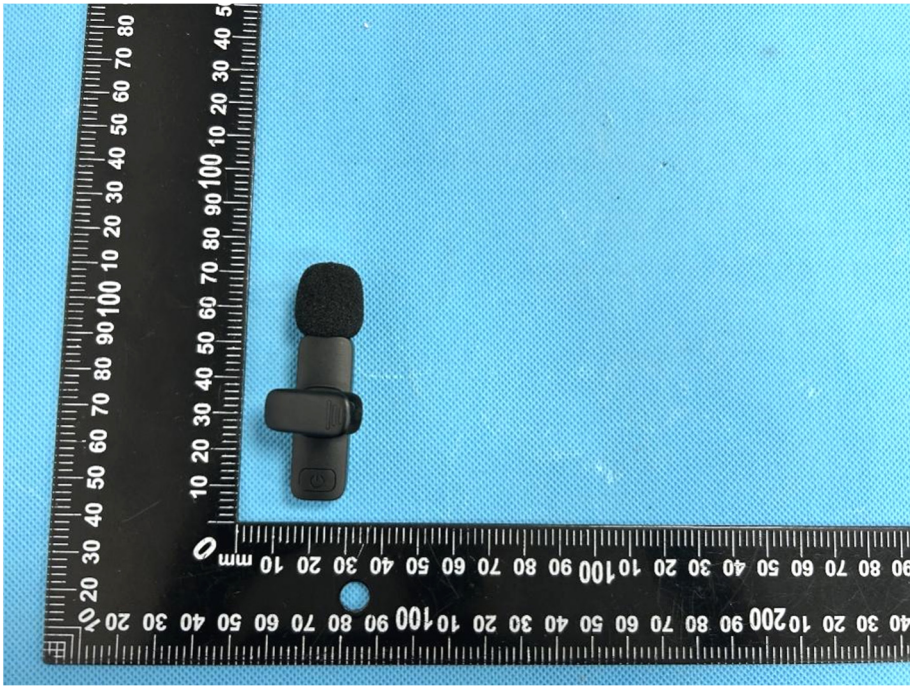
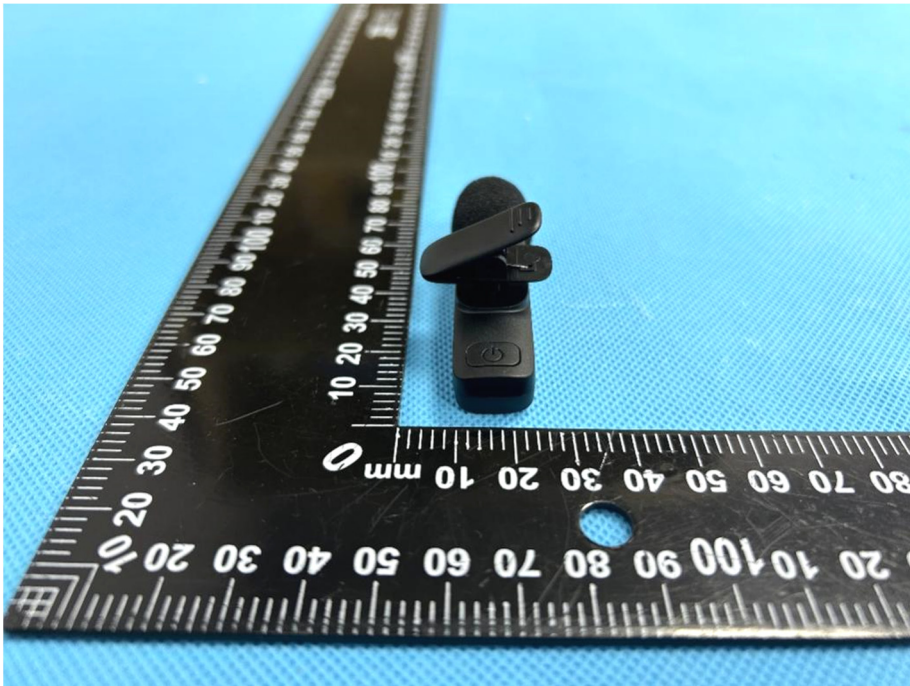
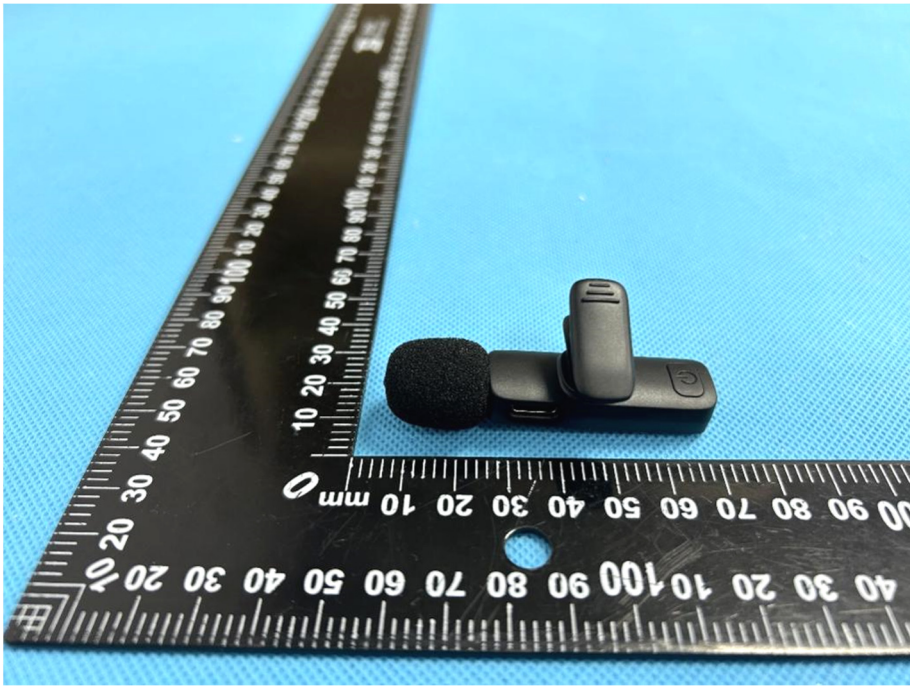
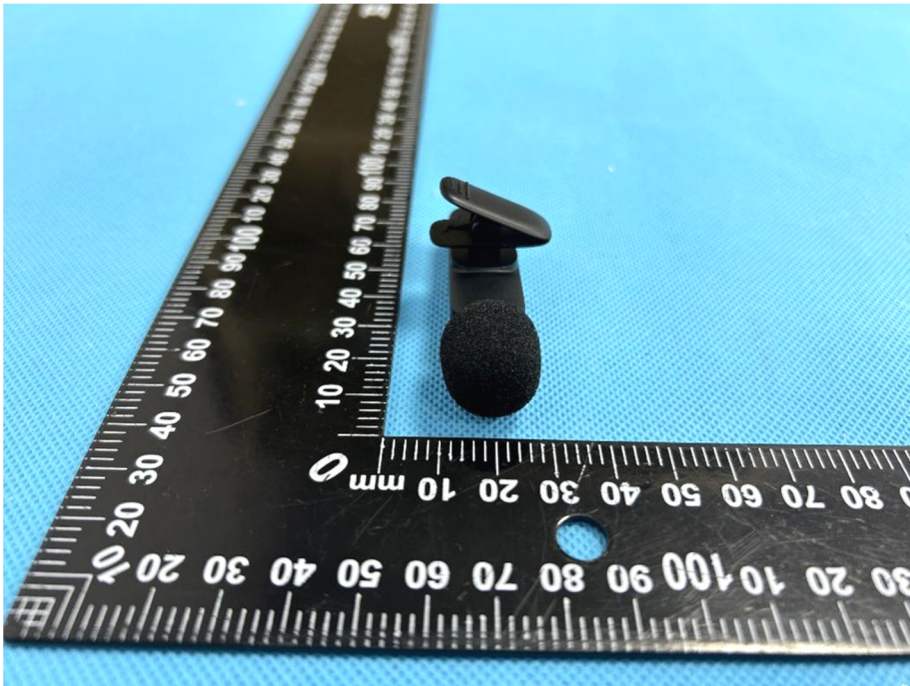


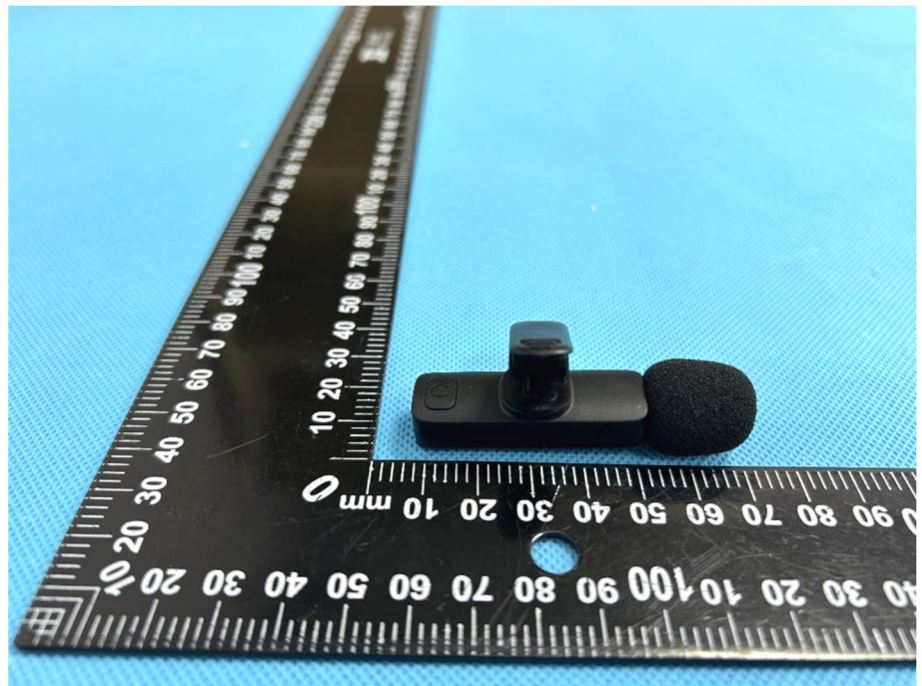
EXHIBIT 2 - EUT EXTERNAL PHOTOGRAPHS



<p>EUT View 3</p>	 A photograph showing a small, black, rectangular electronic device with a microphone. The device is positioned vertically on a blue textured surface. To its left is a black L-shaped ruler with white markings in millimeters and centimeters. The ruler indicates the device is approximately 20 mm high and 10 mm wide. The device has a small circular microphone at the top and a power button on the front face.
<p>EUT View 4</p>	 A photograph showing the same small, black, rectangular electronic device from a different perspective. The device is now oriented horizontally. It is placed on a blue textured surface next to a black L-shaped ruler with white markings. The ruler shows the device is approximately 10 mm high and 20 mm wide. The microphone is now on the right side, and the power button is on the front face.

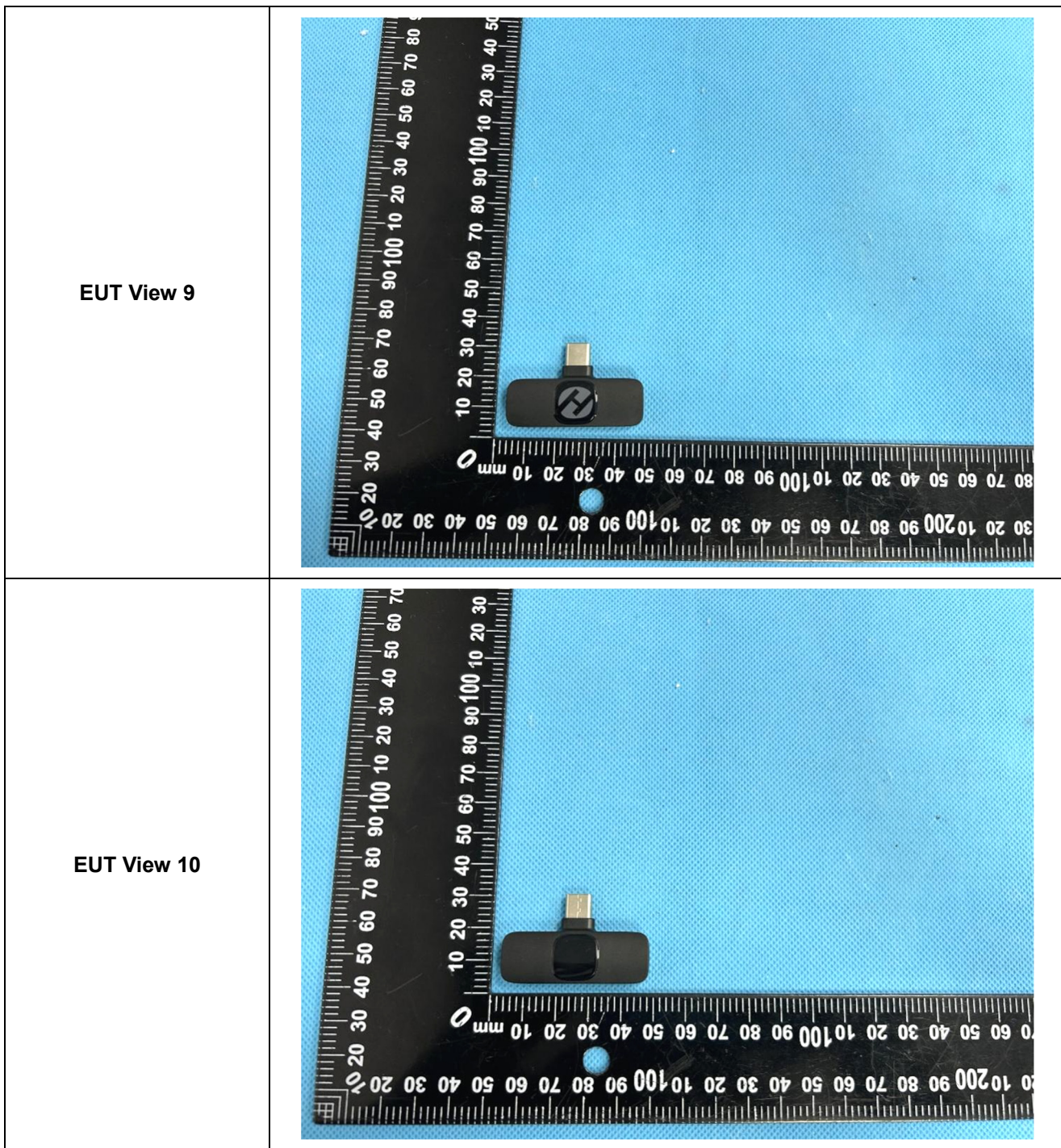
<p>EUT View 5</p>	 A black electronic device, likely a microphone or speaker, is shown from a top-down perspective. It has a cylindrical black mesh microphone on the left and a rectangular black component with a small button on the right. The device is placed on a blue textured surface next to a black ruler with white markings. The ruler shows measurements in millimeters, with the device spanning approximately from the 20 mm mark to the 60 mm mark.
<p>EUT View 6</p>	 The same black electronic device is shown from a different angle, highlighting the microphone and the button. It is placed on the same blue textured surface next to the same black ruler. The device is positioned between the 20 mm and 40 mm marks on the ruler.

EUT View 7

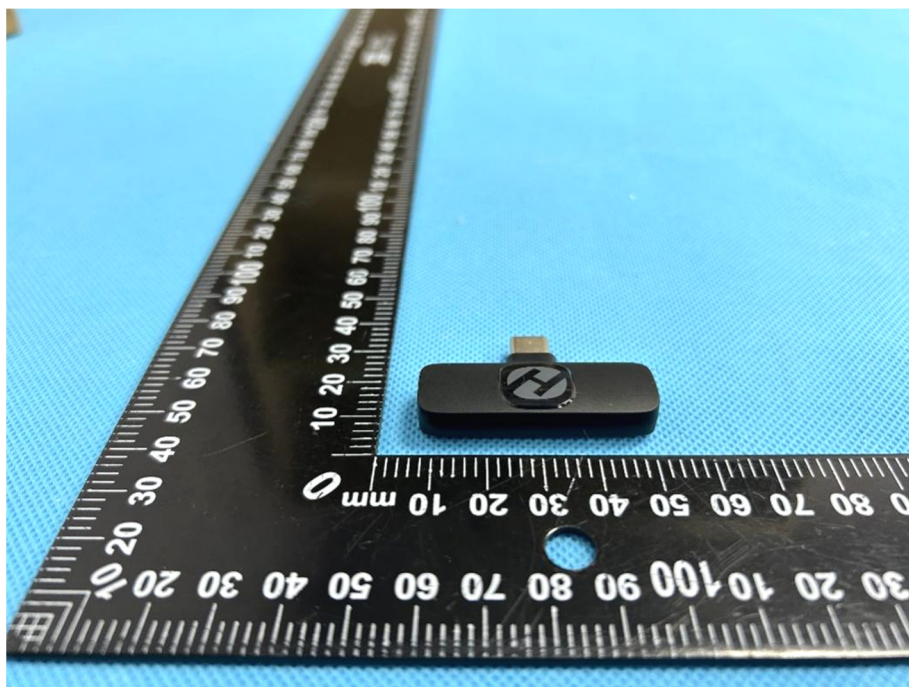


EUT View 8

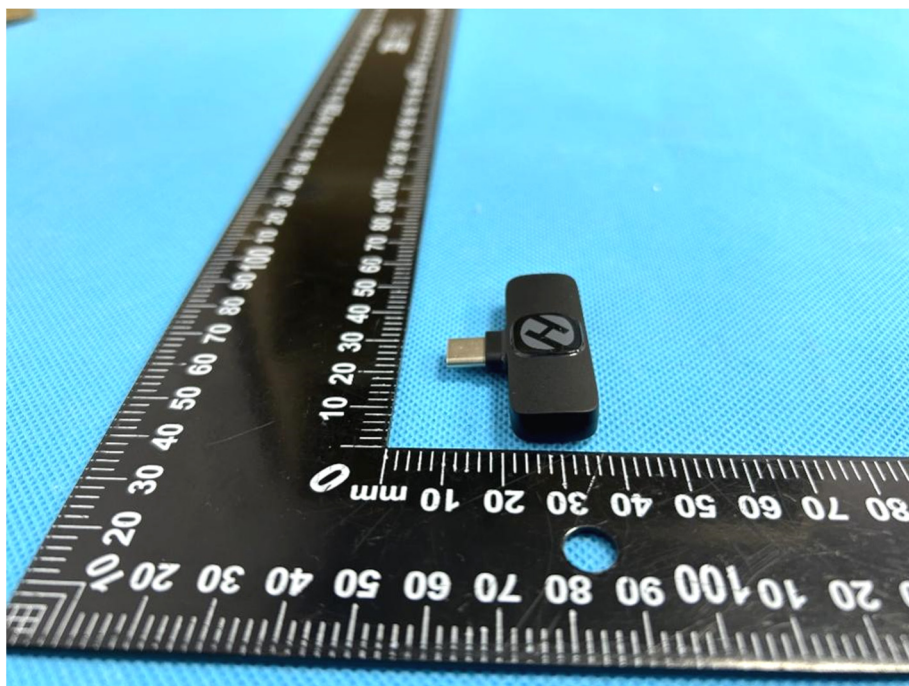




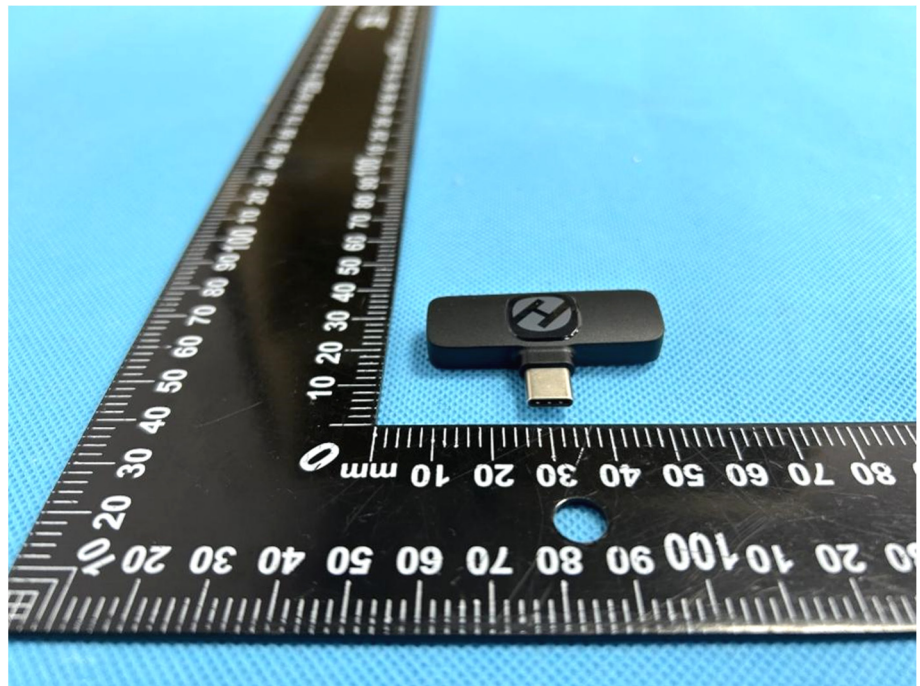
EUT View 11



EUT View 12



EUT View 13



EUT View 14

