


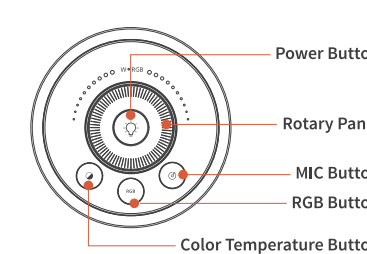
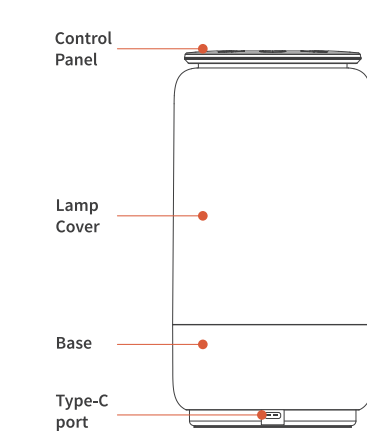
| REV. 版本 | MARK 标记 | ECN. NO. 变更单编码 | DATE 日期 | DESCRIPTION 修订内容 | CHANGE 变更者 |
|------------|---|-------------------|------------|---------------------|---------------|
| - |  | - | | - | |



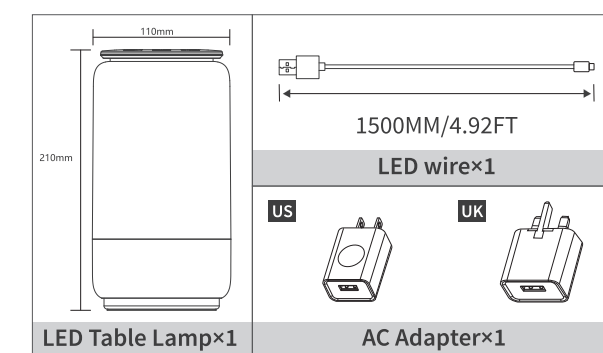
CONTENTS

Thank you for purchasing Magiaceous Table Lamp.
Please read this user manual carefully and keep it for future
reference.
For further inquiries, contact the technical support with your
product model.

Product Diagram



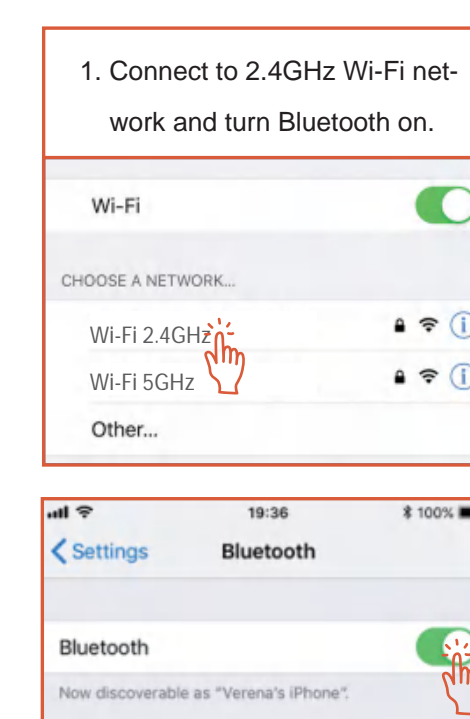
Product Specifications



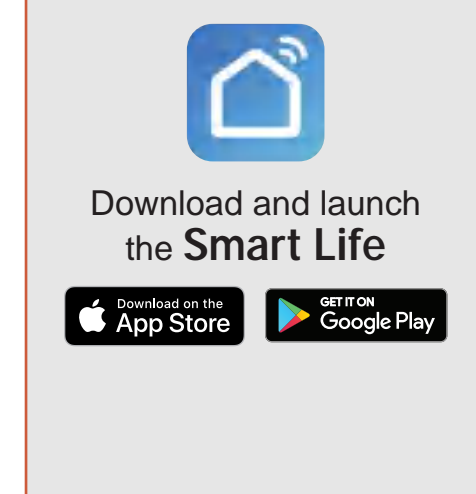
| Product Parameter | |
|-----------------------|---|
| Model | KT-B01MA |
| Wattage | 6W |
| Adapter Input | AC 100-240V 50/60Hz |
| Adapter Output | 5V = 1.5A |
| Current Ripple | Flicker Free |
| Network | WiFi IEEE802.11b/g/n/2.4GHz |
| Luminous Flux | 450lm@4000K_Re6.7.2cd, 650lm@2700K_Blu@6.6cd |
| CCT/ Color | 2700K-5700K / 16 Million Colors |
| CRI | Ra>80 |
| IP Rating | IP>20 |
| Operation Temperature | -20°~40° C/-4° F~104° F |
| Lifespan | 30,000hrs |
| Dimensions | 4.3" x 4.3" x 3" (110mm x 110mm x 210mm) |

| Operation Instructions | | |
|------------------------|-----------------------------|--|
| Icon | Project | Function |
| | Power-On/Off | <p>Short press</p> <p>When light source is off, turning on/off the light, or when light source is already turning on/off, the light will be automatically maintained.</p> |
| | Color temperature selection | <p>Short press</p> <p>1. In the same color temperature, adjust the short press times, the color temperature temperature, the light color will be adjusted. (2000K-6500K, 1000K-10000K)</p> <p>2. In the same color temperature, adjust the short press times, the light color will be adjusted. (2000K-6500K, 1000K-10000K)</p> |
| | RGB | <p>Short press</p> <p>1. Seven times in the same color, short press to cycle through: Seven times: ① Purple mode, ② Cyan mode, ③ Blue mode, ④ Green mode, ⑤ Yellow mode, ⑥ Orange mode, ⑦ Red mode.</p> <p>2. Colorful mode: The white state is the colorful mode with 100% brightness.</p> |
| | MUSIC function | <p>Short press</p> <p>Four mode selections, short press switch in: ① Music, ② Light, ③ Sleep, ④ Party.</p> |
| | Rotating dinner | <p>Short press</p> <p>1. When in the light mode, adjust the brightness of white light (2000K-6500K, 1000K-10000K) and adjust color.</p> <p>2. Depend on RGB mode with 16 million colors.</p> |

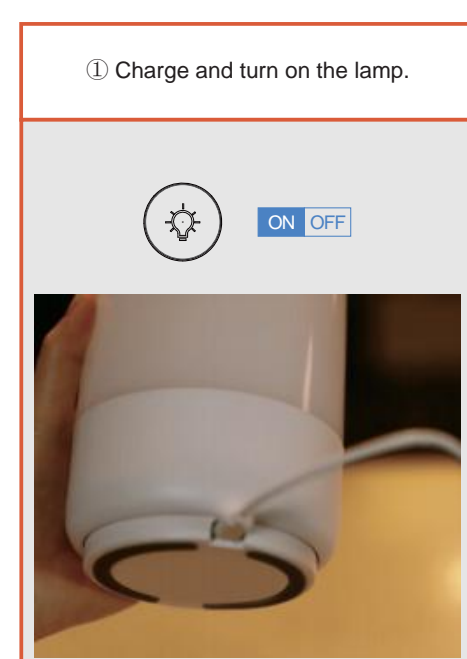
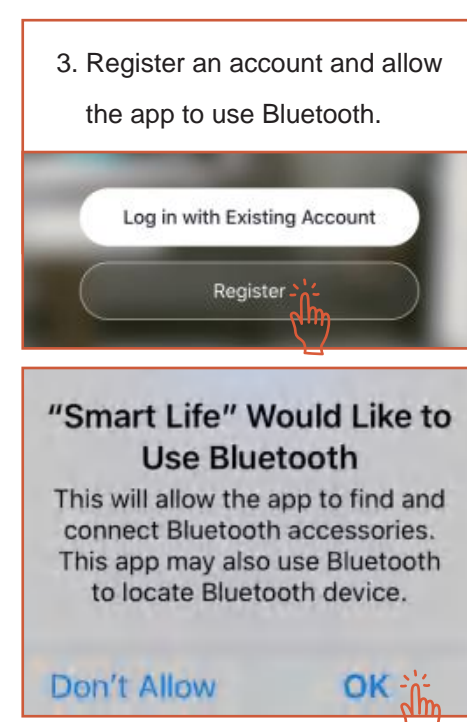
Preparation



2. Install the Smart Life app from the Apple Store/ Google Play Store, or via scanning the QR code.

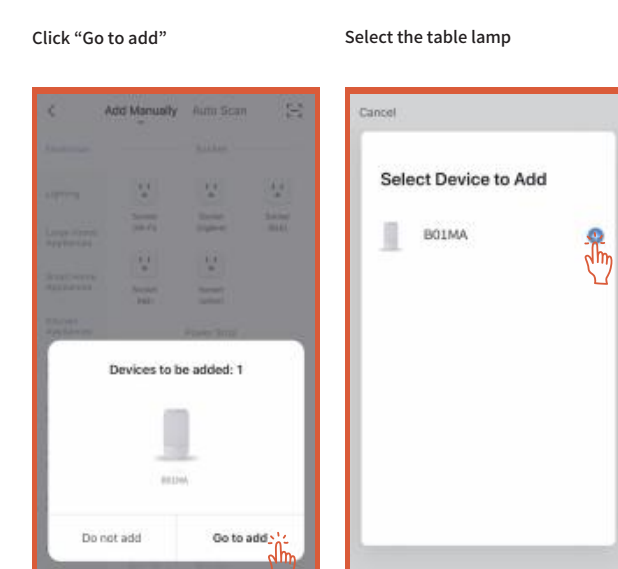


Prepare the Lamp for Connection

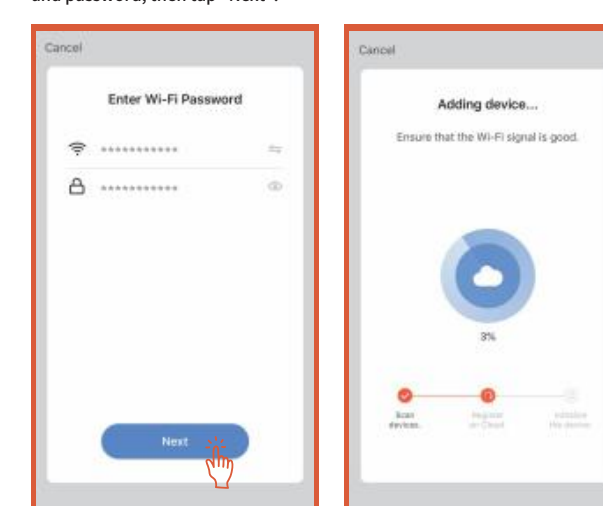


Add the Lamp to Smart Life (via Bluetooth)

① The lamp will appear automatically waiting to be added when you open the Smart Life App.



Enter 2.4GHz Wi-Fi network name and password, then tap "Next"

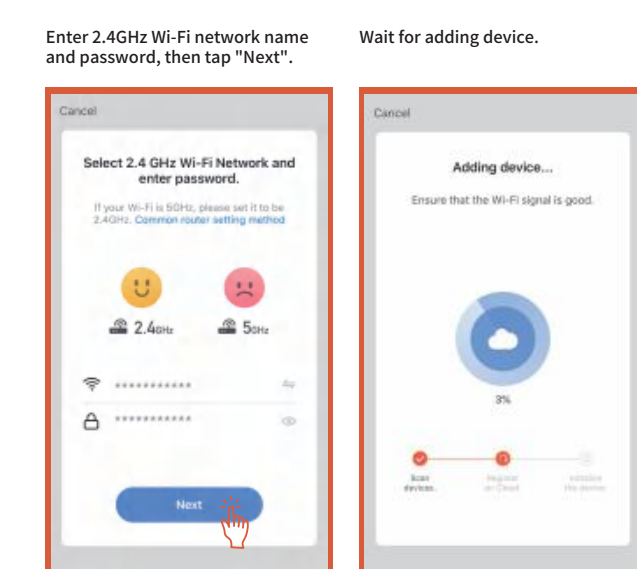
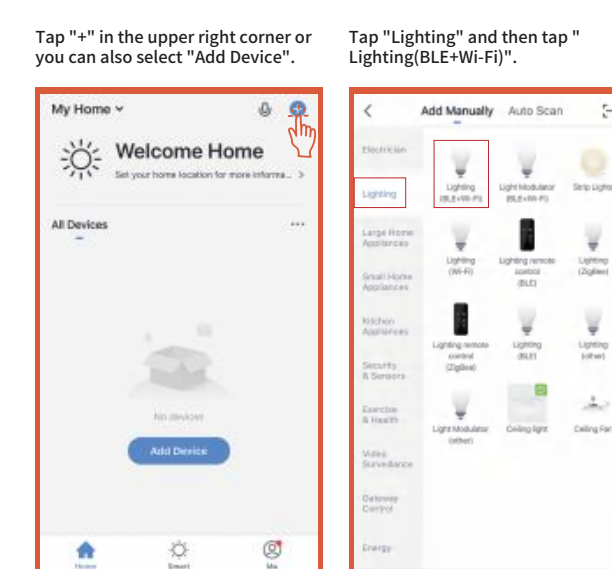


You can edit the lamp name and click "Done".

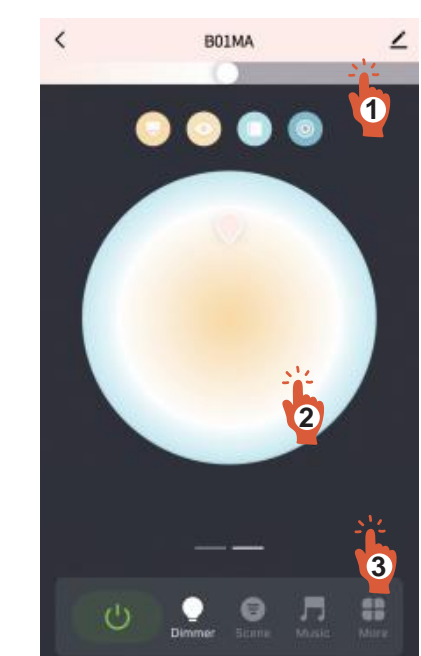
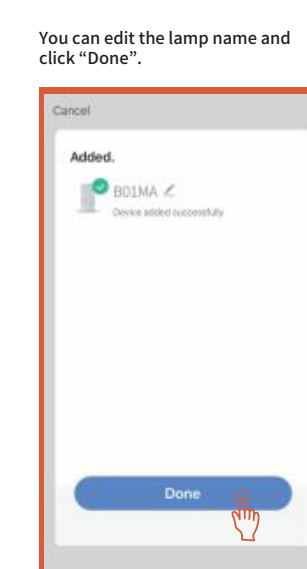


Add the Lamp to Smart Life (Manually)

② Or you could add the lamp to Smart Life manually.

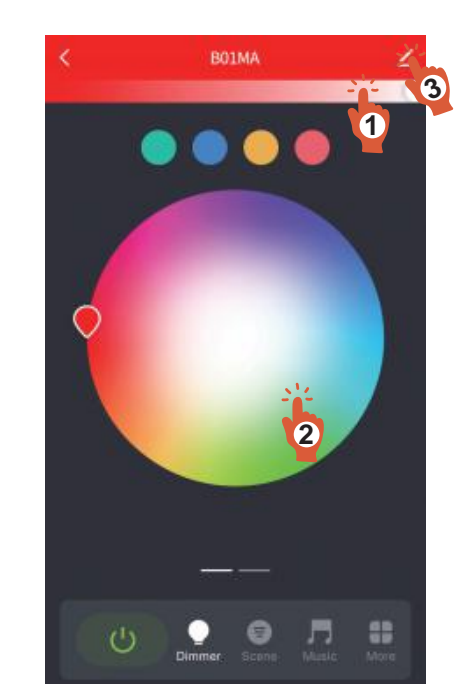


Tunable White



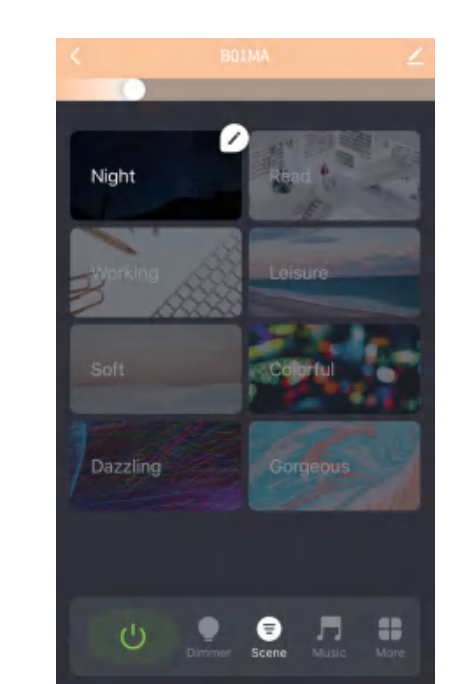
① Brightness Control
② Color Temperature Control
③ Slip these area can enter the color selecto

RGB Mode



- ① Brightness Control
- ② Brightness Saturation / Color Control
- ③ Click to know more details of the device, or rename the lamp, share it to your families

Scene Mode



Note: For the scene modes: Night, Read, Working and Leisure, their color settings are fixed and could not be customized. However, you can customize the color setting of other scene modes (Soft, Colorful, Dazzling, and Gorgeous) according to your requirements.

WEEE Compliance

Correct Disposal of This Product (Waste Electrical & Electronic Equipment)
(Applicable in countries with separate

his marking on the product, accessories or literature indicates that the product and its electronic accessories should not be disposed of with other household waste at the end of their working life. To prevent possible harm to the environment or human health from uncontrolled waste disposal, please separate these items from other types of waste and recycle them responsibly to promote the sustainable reuse of material resources. - Household users should contact either the retailer where they purchased this product, or their local government office, for details of where and how they can take these items for environmentally safe recycling. Business users should contact their supplier and check the terms and conditions of the purchase contract. This product and its electronic accessories should not be mixed with other commercial waste for disposal.

CC Compliance

This device complies with Part 15 of the FCC Rules. Operation is subject to the following two conditions:

- (1) this device may not cause harmful interference, and
- (2) this device must withstand any interference received, including interference that may cause undesired operation.

Note: This equipment has been tested and found to comply with the limits for a Class B digital device, pursuant to Part 15 of the FCC Rules. These limits are designed to provide reasonable protection against harmful interference in a residential installation. This equipment generates, uses, and can radiate radio frequency energy and, if not properly installed and used, may cause harmful interference to radio communications. However, there is no guarantee that interference will not occur in a particular installation. If interference is determined to be occurring in accordance with the following steps, the user is encouraged to try to correct the interference by one or more of the following measures:

- Reorient or relocate the receiving antenna.
- Increase the separation between the equipment and receiver.
- Connect the equipment into an outlet on a circuit different from that to which the receiver is connected.
- Consult the dealer or an experienced radio/TV technician for help.



| | | | | | | | | |
|----------------------|----|---|----|-------------|------|---|---------------|---------------|
| TITLE 名 称 | | 说明书 | | | |  深圳市凯润智能照明有限公司 | | |
| P/N 料 号 | | | | | | | | |
| DRAW NO 图 号 | | N/A | | REV. 版本 | A0 | APP BY 核 准 | CHK BY 审 核 | DRW BY 制 图 |
| TOL. 公差 | ±5 | UNITS 单位 | mm | SCALE 比例 | FREE | | | |
| 3RD. ANGLE'S 第三角法 | |  | | SHEET 页码 | 1/1 | | | |