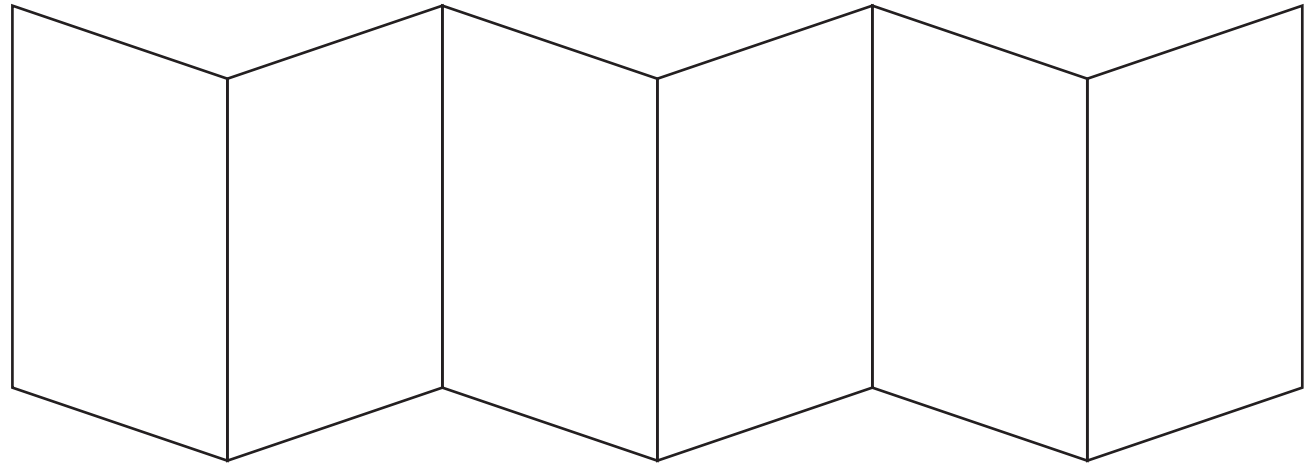


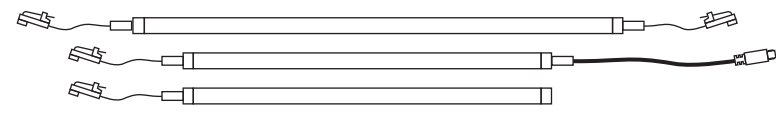
120x120mm



120mm

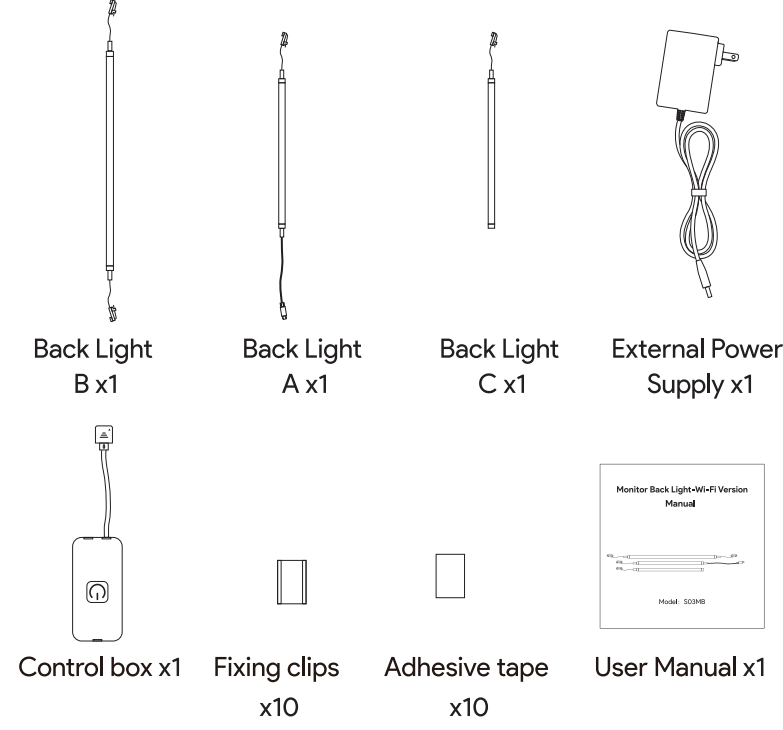
120mm

Monitor Back Light-Wi-Fi Version Manual



Model: S03MB

Package Contents

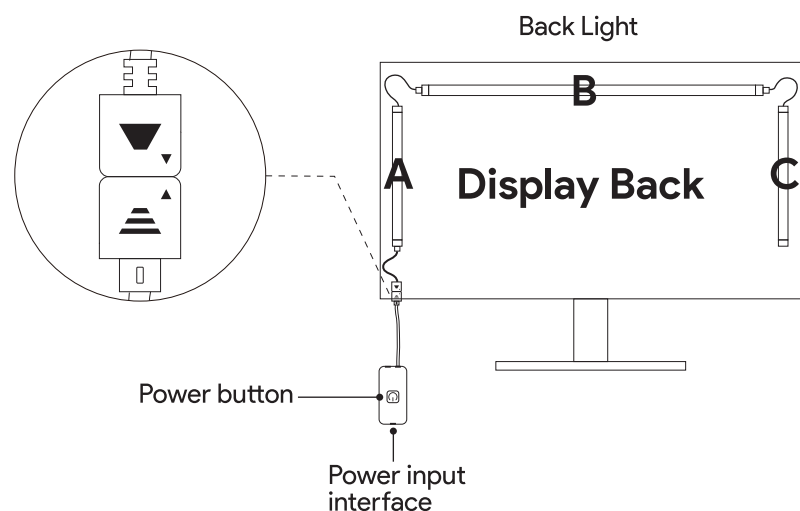


Specifications

Model	S03MB
Power Supply	AC100-240V DC24V=0.75A
Dimensions	1.64 ft(long), 0.82 ft
Water Resistance	IP20
Control Method	PC/Mobile App,Control Box
Luminous power	10W
WiFi	IEEE 802.11 b/g/n
Operating Frequency	2.412-2.484GHz
Support System	Android 5.5 or iOS 9.0 and above Windows 10(x64) and above

Power button	Short press button to turn on/off Long press the button for 5 seconds to start the Pairing mode(Wi-Fi or bluetooth).
--------------	---

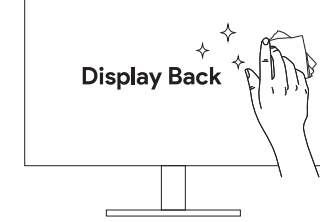
Installing Steps



Caution:

Please strictly follow the sequence as picture shows. Strip A at the left and Strip C at the right of Display Back.

1. Wipe the surface to make sure it's clean and dry.



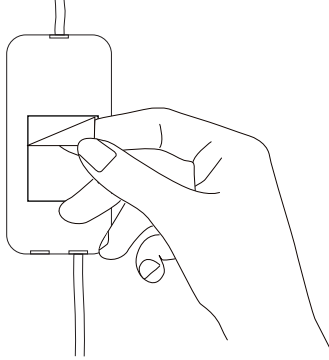
2. Paste the adhesive tape to the clips, and tear off the film. You can stick the clip to the place you want and press it firmly and then put the back light into the clip.

Notes:

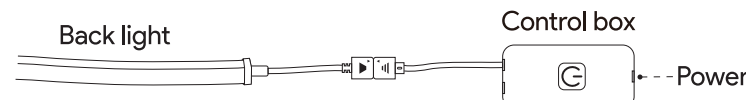
For better stability, adhesive tape can only be used once.



3. Adhesive tape is available for the control box, you could use it to stick control box to the back of monitor.



4. Power on the back light and start using.



Operation description on the PC

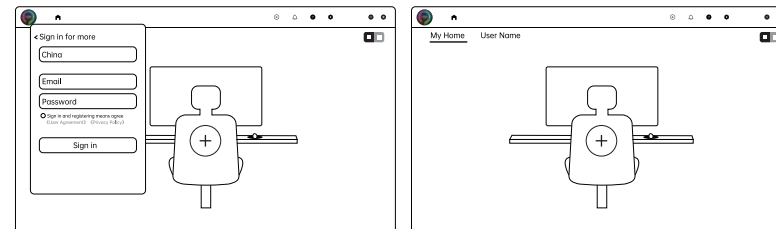
1. Please download the "LINKLITE" app from https://www.linklite-iot.com/products_detail/3.html



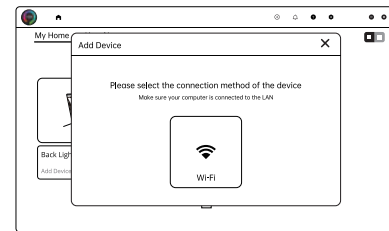
Download and launch LINKLITE

2. Register an account and login in.

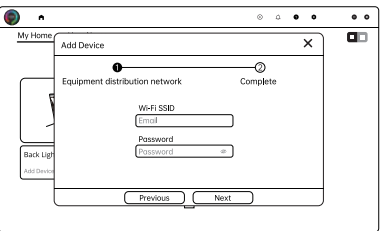
3. Tap "+" to add device after log in.



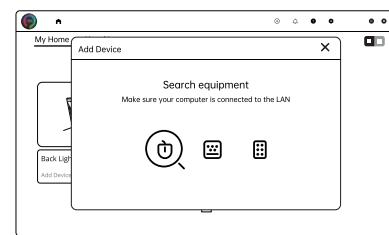
4. Connect to 2.4GHz Wi-Fi network and follow steps to add devices.



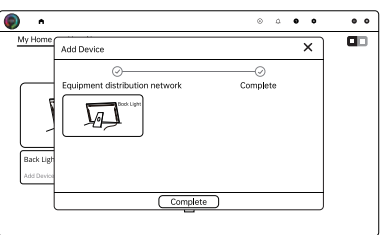
5. Enter Wi-Fi SSID name and password.



6. Search device and connect.



7. Device added.



Rino Smart

Download on the App Store

GET IT ON Google Play

Download Rino Smart App

Rino Smart App allows you to control and customize your controls for Monitor Back Light-Wi-Fi Version via your smart device, Search for the latest version on Apple App store or Google Play.

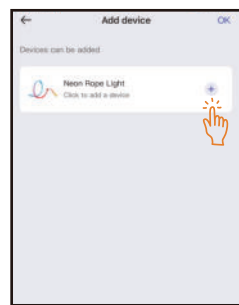
Pairing Your Device with the Rino Smart App What You Need

- Device supports the 2.4GHz and 802.11 b/g/n bands only. 5GHz is not supported.

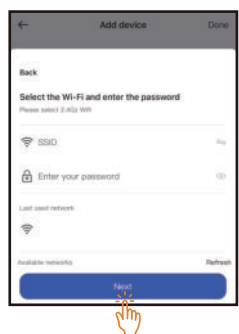
- A smart phone or tablet running Android 5.5 or iOS 9.0 and above.

Pairing Instructions

- Download the "Rino Smart" app from the APP Store or GooglePlay.
- Register an account and log in, allow the app to use Bluetooth.
- Connect to 2.4GHz Wi-Fi network and turn Bluetooth on from your mobile phone.
- Charge and press Power Button to turn on the control box, and then long press Power Button for 5 seconds until the light flashing and going into pairing mode.
- After completing the above operation instructions, tap the "+" icon at the top right corner of Smart Home homepage., then click "Add Device".
- Click the device icon when it show up, then click again "+" next to the icon.



7. Then enter Wi-Fi SSID Name and password as required, and press "next" to complete the process.



Tips

- If you have already downloaded the "Rino Smart" App and registered the account, you can skip step1 and step 2.

Troubleshooting

- Cannot connect to Bluetooth.
 - Ensure Bluetooth on your smart phone has been turned on.
 - Your smart phone may be incompatible with the Rino Smart app.
- Try using a different smart phone then reconnect.

- Power the Back Light and your smart phone Bluetooth off then on, then try again.
- Ensure that your smart phone is within 1m/3.28ft of the control box when connecting.
- The Back Light does not display the full selected color/some LED beads do not light up.
- Please contact the support team for rapid product replacement.
- Cannot connect to Wi-Fi.
- Do not skip the Wi-Fi connecting steps in the app.
- 5GHz network is not supported. Please set the router to 2.4GHz and then reset it.
- Connect your phone to Wi-Fi and check whether the network works well.
- Make sure you have entered the correct Wi-Fi name and password.
- Change your Wi-Fi password to a brief one. 8 numbers and letters are suggested.

Customer Service

Support: support@linklite-iot.com
Official Website: www.linklite-iot.com

FCC Radiation Exposure Statement

This device complies with Part 15 of the FCC Rules. Operation is subject to the following two conditions:
(1) this device may not cause harmful interference, and
(2) this device must accept any interference received, including interference that may cause undesired operation. changes or modifications not expressly approved by the party responsible for compliance could void the user's authority to operate the equipment.

NOTE: This equipment has been tested and found to comply with the limits for a Class B digital device, pursuant to Part 15 of the FCC Rules. These limits are designed to provide reasonable protection against harmful interference in a residential installation. This equipment generates, uses and can radiate radio frequency energy and, if not installed and used in accordance with the instructions, may cause harmful interference to radio communications. However, there is no guarantee that interference will not occur in a particular installation. If this equipment does cause harmful interference to radio or television reception, which can be determined by turning the equipment off and on, the user is encouraged to try to correct the interference by one or more of the following measures:

- Reorient or relocate the receiving antenna.
- Increase the separation between the equipment and receiver.
- Connect the equipment into an outlet on a circuit different from that to which the receiver is connected.
- Consult the dealer or an experienced radio/TV technician for help.

NOTE: This device and its antenna(s) must not be co-located or operation in conjunction with any other antenna or transmitter

The device has been evaluated to meet general RF exposure requirement. This equipment should be installed and operated with a minimum distance of 20 cm between the radiator and your body.

Manufacturer: Shenzhen Linklite Smart Lighting Co., Ltd.
Address: 302, Building 4, Rongcheng Scientific Research Town, Xinfeng Road, Sunshine Community, Xili Street, Nanshan District, Shenzhen, Guangdong Province, China

