

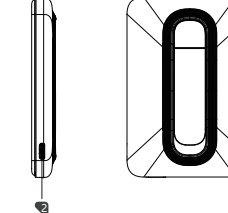
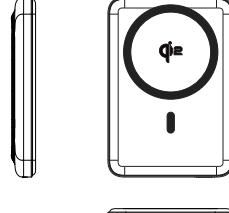
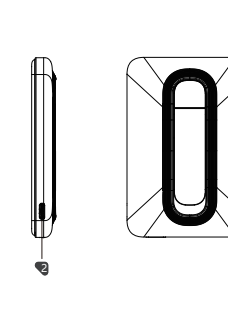
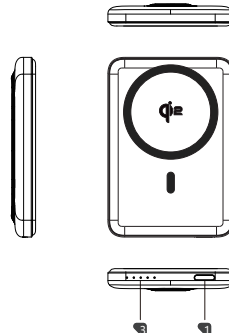
Size: 80x120mm

80mm

120mm

RC8.PD20.M2

Instruction manual



1. Power Button

2. USB-C Input/Output

3. Status indicator light

Accessory list:
USB-C to USB-C charging cable X 1

Capacity: 5000mAh/3.85V/19.25Wh

USB-C Input: 5V=3A, 9V=2A

USB-C Output: 5V=3A, 9V=2.22A, 12V=1.67A

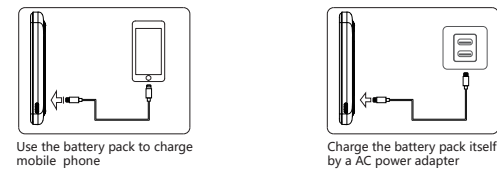
Wireless Output: 5W/15W

Maximum Output Power: 20W

Brief introduction

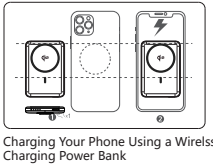
- This product applies magnetic suction wireless charging technology, built-in induction coil, no need to open, a charge, suitable for mobile phones and other wireless charging devices, and other based on 5V, 9V, 12V DC input devices.
- This product adopts lithium battery protective circuit, with protection of over-charge, over-discharge, over load, short-circuit protection, high safety performance; The output adopts high efficiency DC-DC step-up conversion circuit; Meanwhile, it adopts MCU microcomputer control management; it will automatically power display, Ultra-low power consumption standby function etc.

LED Introduction



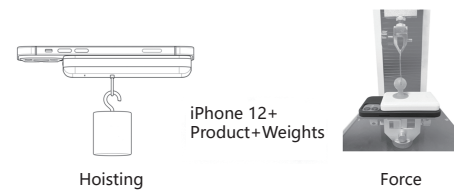
Charge	1 LED flashing 0%-5%	2 LED on: 25-50% power remaining	3 LED on: 50-75% power remaining	4 LED on: 75-100% power remaining
1 LED flashing 0%-5%	1 LED on: 25-50% power remaining	2 LED on: 50-75% power remaining	3 LED on: 75-100% power remaining	4 LED on: 100-75% power remaining

Charge	1 LED flashing 0%-25%	2 LED on: 25-50% power remaining	3 LED on: 50-75% power remaining	4 LED on: 75-100% power remaining
1 LED flashing 0%-25%	2 LED on: 25-50% power remaining	3 LED on: 50-75% power remaining	4 LED on: 75-100% power remaining	5 LED on: 100-75% power remaining



Stand by	Output by	Output abnormal load
Green light on	Blue light keeps on	Blue light flashing

Magnetic lifting weight and magnetic pulling force



Item	Specification	Min	Typ	Max
Magnetic lifting weight	Bare mobile phone (weight weight + product weight)	500g	600g	----
	Original case with mobile phone (weight weight + product weight)	650g	700g	----
Magnetic pull	Mobile phone bare metal (showing power)	8N	8N	----
	With original phone case (showing power)	10N	11N	----

Basic Instructions For Product Operation

- Charging status: When charging the power bank, the white light flashes incrementally and the LED displays the current battery level; If the green light is on, the wireless charging is in standby mode and the input is only 5V. After 30 seconds, it will turn off and the input will return to 9V. When all four white lights remain on, it indicates that the product is full.
- Load status: When the C port is connected to the load, the white light of the product lights up and displays the current battery level; If the green light is on, the wireless charging is in standby mode and the output is only 5V. After 30 seconds, the green light goes out and the output returns to the 9 and 12V gears; When there is no load connection, the white light will turn off and the output will be turned off after 32 seconds.
- Button logic: When the button is clicked to turn on the device, the white and green lights will light up, the white LED will display the current battery level, and the green LED will display that the wireless charging is turned and in standby mode.
- When the magnetic suction wireless charging and USB-C port work at the same time, the maximum output power is 5V/3A 15W.
- Magnetic wireless charging has a foreign object detection function. When a metal object is placed on the transmitting coil of this product, the blue light flashes, the wireless charging output automatically stops, and the blue light goes out after 30 seconds; Remove the foreign object, the blue light flashes and stops.
- Magnetic wireless charging operation logic: ① Press the button to turn on magnetic wireless charging; Click the button and insert the magnetic wireless charging device at this time, and magnetic wireless charging will start with load. The blue light will be on for a long time. At this time, move away the magnetic wireless charging device, and the green light will be on, indicating that magnetic wireless charging has entered standby mode. ② Auto start magnetic wireless charging: Place the magnetic wireless charging device in the coil position, and the magnetic wireless charging will automatically start with load, with the blue light on continuously when the C port is loaded; the magnetic wireless charging needs to be started by clicking the button. At this time, the C port only has 5V, and the magnetic wireless charging only has 5W. Remove the load from the C port and the magnetic wireless charging will recover MPP15W in about 12 seconds.

Precautions

- Please read this specification carefully before using this product.
- The mobile power supply shall be used within the charging and discharging rated specifications specified in the specification, and the ambient temperature during charging and discharging shall be between 0 °C and 35 °C.
- Please keep this product and related accessories well away from children.
- Keep away from inflammables and explosives when using the product.
- Please use the specified charger and approved accessories. Unauthorized power charger and accessories may damage your electronic products and mobile power host.

- Please use the mobile power supply properly according to the local laws, regulations and restrictions. In case of unauthorized situations, such as aircraft landing or near medical instruments, you should avoid charging and turn off your mobile phone or other electronic products immediately to avoid interference.
- The product may be damaged due to improper operation during transportation. If the product is found to be abnormal, such as package damage, battery package deformation, smell of electrolyte and leakage, stop using the product immediately.
- Do not put the dissused mobile power into the dustbin, but put it into the special battery recycling bin.

Safety Warnings

- Avoid short circuit of product interface, which may cause damage to product function.
- Avoid charging the product for a long time. If the charging indicator shows that the product has been charged, remove the product in time to prevent overcharging.
- It is forbidden to throw, impact, rub, bend and press the product violently. This kind of operation causes the product to be sunken, perforated, cracked, distorted, corroded or other abnormal phenomena. Please stop using immediately.
- It is forbidden to disassemble. This operation will lead to internal short circuit, battery leakage, explosion or other problems.
- It is strictly forbidden to immerse the product in all kinds of liquids such as water, sea water or drinks. Please store the product in a dry place away from moist and corrosive materials.
- It is forbidden to put the product in high temperature environment or fire, or use mobile power near flammable gas, steam or dust. Illegal operation may cause battery explosion and endanger safety.
- All products have been fully inspected. If you find that the product is overheated, deformed, damaged, scratched or other abnormal phenomena during use, please stop using it immediately.
- At 25°C, the product is fully charged and then discharged to the cut-off point for 300 consecutive cycles until the discharge capacity is less than 60% of the rated capacity, indicating the end of the service life of the mobile power supply.
- According to the requirements, service conditions and service life conditions, the products should be used reasonably. The products should be charged and discharged once every six months. The products that meet the service life conditions should be scrapped and discarded in time.

- The products used frequently in humid, low temperature and high temperature environment shall be scrapped within 18 months and disposed in time. Under normal use and maintenance, it is suggested that the product should be scrapped within 24 months and disposed in time. If it still needs to be used, it needs to be certified by the relevant professional certification organization, and the longest use time of the product should not exceed 36 months.

Disclaimers

- The equipment damage and safety problems caused by any of the following points are not within the scope of the warranty and responsibility of manufacturer.
- Damage caused by not following the operation instructions and safety warnings in the specification.
 - Damage caused by operation in harsh environment beyond the specification.
 - Damage caused by storage conditions not meeting the requirements of this specification.
 - It is forbidden to apply or operate beyond the conditions described in this specification. If the customer needs, he / she should contact manufacturer technology in advance. In this case, additional experiments are required to verify the performance and safety.

After-sale service

The product shall be valid within 12 months from the date of completion or delivery .

For FAQs and more information, please visit:
www.trusda.com/support



This device complies with part 15 of the FCC Rules. Operation is subject to the following two conditions: (1) This device may not cause harmful interference, and (2) this device must accept any interference received, including interference that may cause undesired operation.

Any changes or modifications not expressly approved by the party responsible for compliance could void the user's authority to operate the equipment.

NOTE: This equipment has been tested and found to comply with the limits for a Class B digital device, pursuant to Part 15 of the FCC Rules. These limits are designed to provide reasonable protection against harmful interference in a residential installation. This equipment generates, uses and can radiate radio frequency energy and, if not installed and used in accordance with the instructions, may cause harmful interference to radio communications. However, there is no guarantee that interference will not occur in a particular installation.

If this equipment does cause harmful interference to radio or television reception, which can be determined by turning the equipment off and on, the user is encouraged to try to correct the interference by one or more of the following measures:

- Reorient or relocate the receiving antenna.
- Increase the separation between the equipment and receiver.
- Connect the equipment into an outlet on a circuit different from that to which the receiver is connected.
- Consult the dealer or an experienced radio/TV technician for help.

FCC Radiation Exposure Statement

The device has been evaluated to meet general RF exposure requirement.