

# Easy Touch Switch Instruction Manual



**Easy**  
Touch Switch





## Safety warnings and precautions

---

- This product involves high-voltage electricity during installation. Installation must be performed by qualified professionals in compliance with local electrical codes and the product manual.
- Always turn off the power supply at the circuit breaker before installing, replacing, or removing the device.
- Indoor use only. Do not use in damp environments or outdoors.
- Moisture prevention: Avoid splashing water or liquids onto the product.
- Keep away from heat sources to prevent damage or fire hazards.
- Do not attempt to disassemble or repair the product. All maintenance must be conducted by authorized technicians.



## Product parameters

---

Product Type: Easyt Touch Switch

Housing Material: PC Glass Panel

Operating Voltage: 100-240V AC

Rated Current: 10A (Max)

Rated Power: 3W-500W

Temperature: -20°C- 40°C

Wireless Connectivity: Wi-Fi + Bluetooth

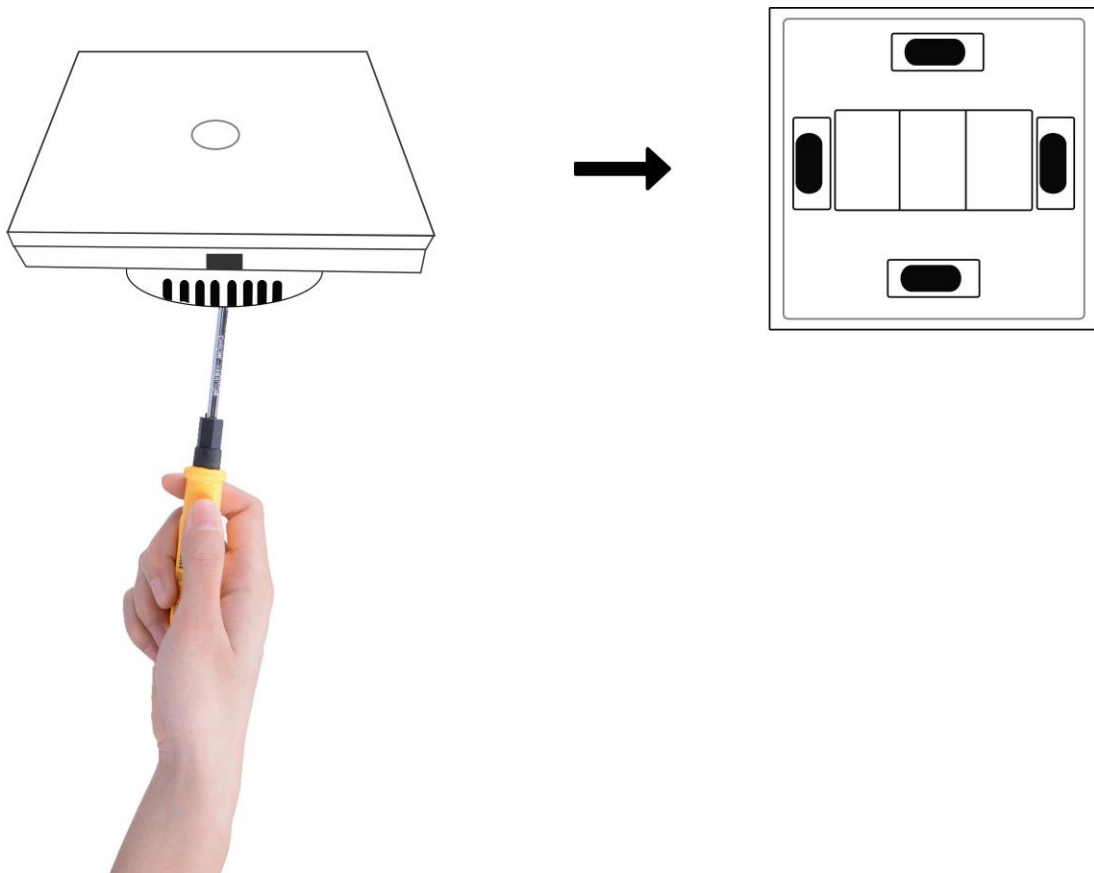
Wireless Frequency: 2.4 GHz

Wireless Standard: IEEE 802.11b/g/n

# PRODUCT DESCRIPTION

---

**Remove the panel with screwdriver**



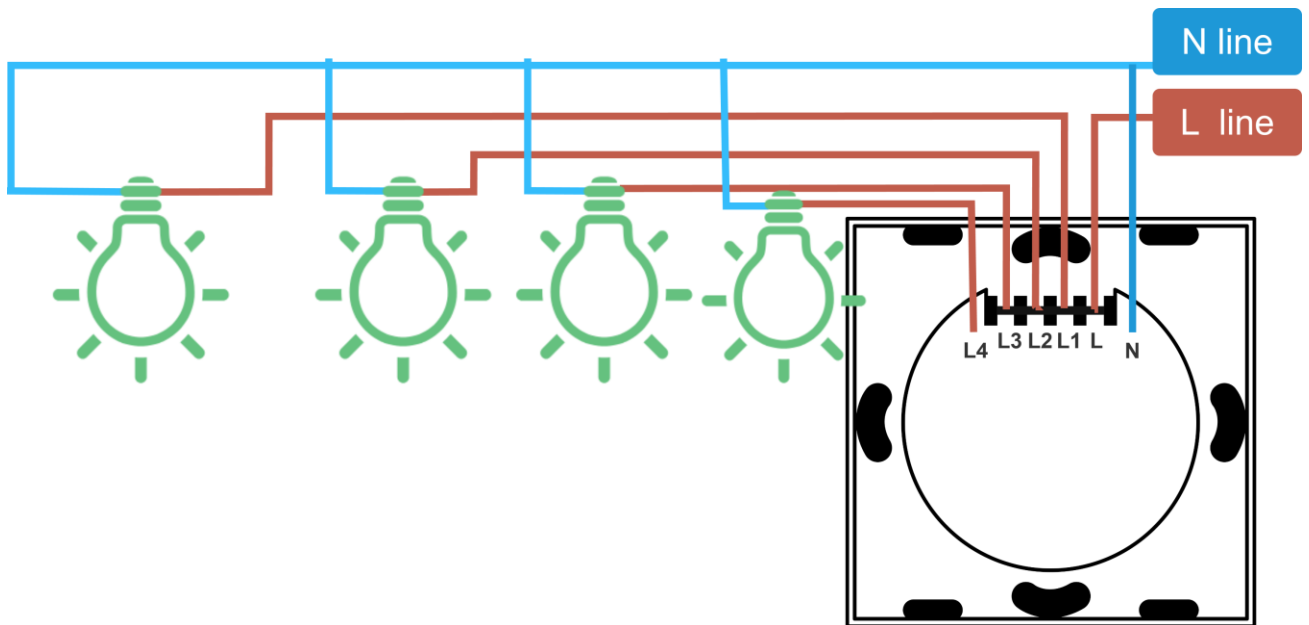
**Make sure electricity is cut off during the installation**

# INSTALLATION WIRING DIAGRAM

---

Switches with "N" terminal support the following wiring mode.

- A. Fire wire connects to "L" terminal.
- B. Lamp wire connects to "L1, L2, L3, L4" terminals.
- C. The neutral line connects to the "N" terminal.



Switch supports single live wire working can be wired in the following way.

A.Live wire connects to "L" terminal.

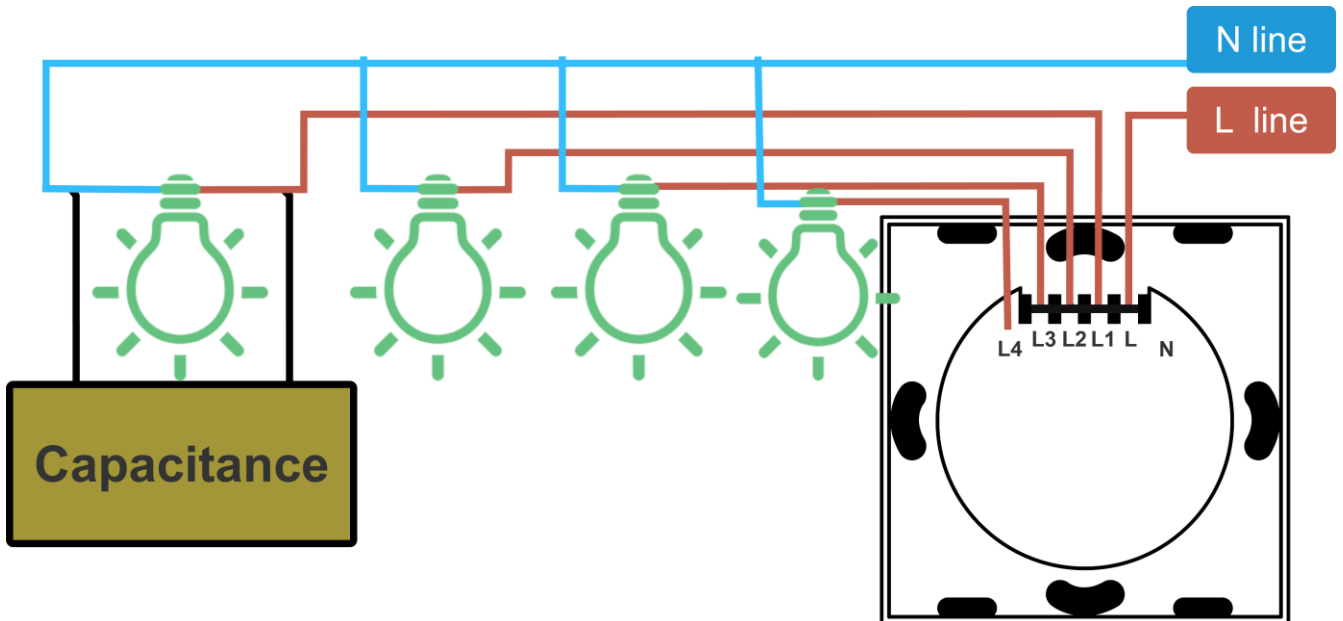
B.Lamp wire connects to "L1,L2,L3,L4" terminal.

1gang connects "L2" terminal.

2gang connects "L1,L3" terminals.

3gang connects "L1,L2,L3" terminals.

C.Capacitance connects first lamp wire and neutral wire.



# HOW TO DOWNLOAD APP

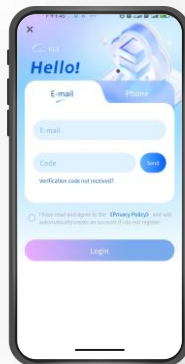
---

1. Scan the QR code below or search "SmartEhouse" in iOS App Store or Google Play.



## 2. Download & Registration

- A. Scan the QR code to download "SmartEhouse" App.
- B. Enter the registration/login interface, enter your email or phone number to obtain the verification code for login, or use other methods at the bottom of the page to jump to the relevant authorization interface for login.



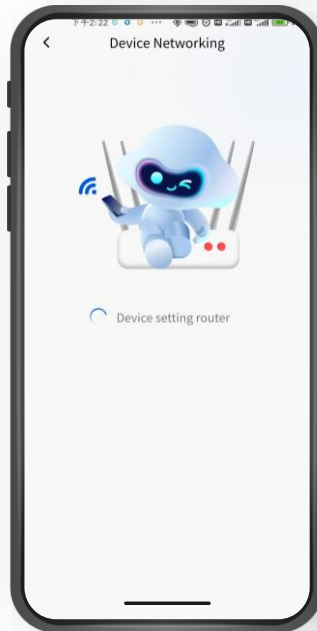
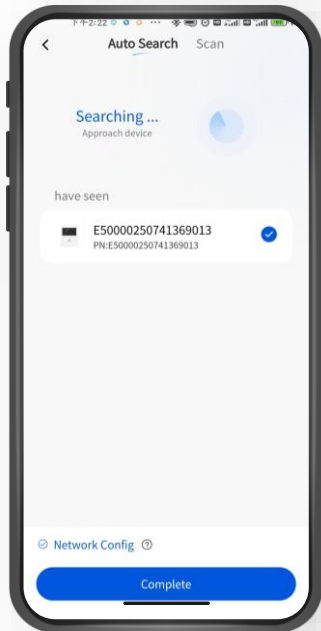
# WIFI PARING METHODS

---

WiFi settings (Bluetooth distribution)

A. Open the "SmartEhouse" APP, click the "+" icon in the upper right corner, and select the Switch device.

B Select the surrounding 2.4GHz band routing signal, enter WiFi password, and complete the distribution network setting according to the prompt.



# PRODUCT FEATURES

---

- Compatible with Bluetooth and Wi-Fi, allowing mode switching at any time.
- Use SmartEHouse App to remotely control home appliances anytime, anywhere.
- Timer function, automatically turn on/off lamps and appliances, improve the convenience of life.
- Exquisite appearance, made of flame-retardant material for safety and durability.
- With overload protection function, easily replace the traditional mechanical switch (need to access the zero line)
- Smart switch design simple and elegant, sensitive capacities touch operation, perfect into a variety of home style.
- The LED indicator light guides the direction for you at night, and can be switched by touching when the light is off.



## FCC WARNING

This device complies with part 15 of the FCC Rules. Operation is subject to the following two conditions: (1) this device may not cause harmful interference, and (2) this device must accept any interference received, including interference that may cause undesired operation.

Any changes or modifications not expressly approved by the party responsible for compliance could void the user's authority to operate the equipment.

NOTE: This equipment has been tested and found to comply with the limits for a Class B digital device, pursuant to Part 15 of the FCC Rules. These limits are designed to provide reasonable protection against harmful interference in a residential installation. This equipment generates, uses and can radiate radio frequency energy and, if not installed and used in accordance with the instructions, may cause harmful interference to radio communications.

However, there is no guarantee that interference will not occur in a particular installation. If this equipment does cause harmful interference to radio or television reception, which can be determined by turning the equipment off and on, the user is encouraged to try to correct the interference by one or more of the following measures:

- Reorient or relocate the receiving antenna.
- Increase the separation between the equipment and receiver.
- Connect the equipment into an outlet on a circuit different from that to which the receiver is connected.
- Consult the dealer or an experienced radio/TV technician for help.

To maintain compliance with FCC's RF Exposure guidelines, This equipment should be installed and operated with minimum 20cm distance between the radiator and your body: Use only the supplied antenna.