

FCCID: 2AS9Y-INEBOX630

WELCOME!

Thank you for choosing **IN&MOTION®**'s technology.

The IN&BOX is the detection device required to make the airbag system work and is only compatible with IN&MOTION airbag systems.

This manual explains how to use this product correctly.

For any questions regarding the IN&BOX, **please contact the IN&MOTION support service, indicating your request:**

✉ Contact form in the *Contact* section of the www.inemotion.com website

📞 Find your country's phone number in the *Contact* section of the www.inemotion.com website.

STAY TUNED!



In&motion



@Inandmotion



In&motion



@Inandmotion

The In&box is designed to be used only with compatible products integrating the IN&MOTION airbag system. Do not use with any other product or any other application that is not mentioned in the user manual supplied with the product integrating the IN&MOTION airbag system.

Algorithms are designed for specific applications (use on Street, Adventure). Please check the usage conditions of the detection mode to benefit from the best protection in case of a fall or accident.



OPERATING A MOTORCYCLE IS INHERENTLY A DANGEROUS ACTIVITY THAT CAN RESULT IN DEATH, BRAIN DAMAGE, PARALYSIS OR SERIOUS PERSONAL INJURY. YOU ASSUME THE RISK OF INJURY OR DEATH WHENEVER YOU ARE OPERATING A MOTORCYCLE. The In&box and associated airbag system are designed

to limit, in defined conditions, the level of injury that may be sustained but they cannot eliminate the risk of injury or death even in situations where the system performs as intended.

Furthermore, excessive speed or other violation of traffic laws or user error can result in accident situations beyond the capacity of the system to minimize or eliminate the risks of injury.

IF YOU DO NOT UNDERSTAND OR APPRECIATE THE DANGER OF THESE ACTIVITIES, PLEASE REFRAIN FROM ALL MOTORSPORTS ACTIVITY AND FURTHER USE OF IN&MOTION AIRBAG SYSTEM.



Always turn off your airbag system when using other transportation or when the airbag product is not being worn (turn off the In&box and/or remove it from the product).

Before using your airbag system, please carefully read the safety instructions included in this manual and in the user manual supplied with the product integrating the IN&MOTION airbag system.

IN&BOX

User Manual

Quick Start Guide	p.4
In&box Basics	p.5
Getting Started	p.6
 User Manual	 p.10
General Overview	p.10
In&box Operation	p.11
Mobile App	p.15
 Technical Information	 p.16
Charging	p.16
Technical Characteristics	p.16
Recycling	p.17
Certifications	p.18
 Warnings	 p.20



In order to get the latest updated version, please scan this QR code or refer to the *Support* section in the www.inemotion.com website (version number indicated at the end of this manual).

QUICK START GUIDE

CONTENTS



In&box: IN&MOTION airbag system detection and triggering device containing the sensors and battery



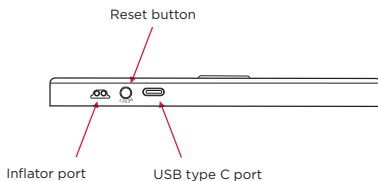
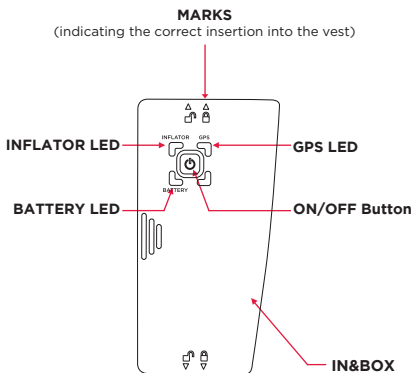
Standard USB cable



In&box User Manual

The user manual dedicated to the airbag system is supplied with the product integrating the In&motion airbag system.

IN&BOX BASICS



USER MANUAL

GENERAL PRESENTATION

#1 ACQUIRE AN AIRBAG SYSTEM

To acquire a product integrating the IN&MOTION airbag system, follow these steps:

1. Buy the product integrating the IN&MOTION airbag system from a reseller. The In&box is delivered with the product.
2. Subscribe to a formula (lease or purchase) on the section *Membership* of www.inemotion.com website.



The In&box must be activated before use on www.inemotion.com in order to be functional.

3. Activate your In&box. Once activated, the In&box is ready to be used all over the world for the entire duration of the offer selected.

#2 IN&MOTION MEMBERSHIP AND FORMULAS

For any question regarding the IN&MOTION membership or subscription to a formula, please refer to our website www.inemotion.com and to the general terms of sale and lease available during the subscription process or on our website.

#3 ACTIVATE YOUR SYSTEM



Watch our tutorial video on our Youtube channel to learn more about the activation procedure : <http://bit.ly/InemotionTuto>

For the first use only, activate your In&box and subscribe to an IN&MOTION membership:

1. Go to the *Membership* section of the www.inemotion.com website

2. Create your user account.
3. Activate your IN&MOTION subscription: choose your formula and payment method.
4. Download the mobile app «My In&box»* (available for iOS and Android).
5. Pair your In&box to your user account by following the mobile app instructions:
 - Connect to the mobile app thanks to the user account you created earlier.
 - Turn on your In&box and activate *Bluetooth®* on your phone.
 - Scan or enter your airbag product's Serial Number (SN) located on the label inside your airbag product.
 - The pairing process starts: follow the instructions on the app.
6. Your In&box is ready to be used!

Once activated, the In&box is autonomous and does not need to be connected to the mobile app to be functional.

For more information regarding the «My In&box» mobile app, please refer to the «**Mobile app**» section of this manual.

** Your mobile phone must be compatible with BLE (Bluetooth® Low Energy) in order to pair your In&box. Check the list of compatible phones in the "Mobile App" section of this manual. If you don't have a compatible phone, please follow the manual activation procedure available on your user area on the www.inemotion.com website.*

*** The mobile app is however necessary to change your detection mode*

IN&BOX OPERATION

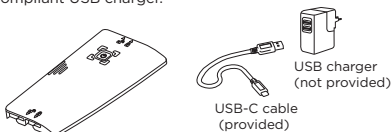
#1 CHARGE THE IN&BOX

Connect the In&box to the USB-C cable provided with the In&box and plug into a USB charger (not provided).

Recommendations for charging are:

Electrical charging characteristics: Input: 5 V  1,5 A

Compatible chargers: Use a EN60950-1 or EN62368-1 compliant USB charger.



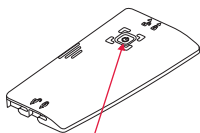
In&box battery duration is approximately 30 hours in continuous use.

This corresponds to approximately 1 week of autonomy in normal use (daily commute*).

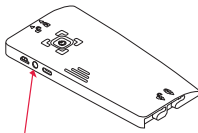
IN&MOTION recommends switching off your In&box with the central button when it is not being used for several consecutive days.

** Around 3h riding per day and "automatic standby" mode the rest of the day.*

#2 TURN ON YOUR IN&BOX



Quickly press twice on the central button to turn on or off the In&box



In case of problem, activate the Reset button by pressing it for 5 seconds

#3 IN&BOX ACTIVATION MODES

The In&box has two different activation modes:

1. Activation using the ON/OFF central Button

Turn your In&box on and off without removing your In&box from its position by double clicking quickly on the central button.



Make sure to turn your In&box off when using any other transportation.



2. Automatic standby mode

Thanks to this function, your In&box will switch to standby mode automatically if it remains motionless for more than 5 minutes. When the In&box detects motion, it turns on automatically eliminating the need to turn it on or off! However, the In&box must be placed on a completely motionless stand.

Make sure to turn your In&box off when using any other transportation car, bus, airplane, train or using a motorcycle but not wearing the airbag system).

#3 LIGHTING CODE

Below is a list of different LED colours that you may see on your In&box.

Warning, this lighting code can change and evolve over time depending on the usage.

In order to be aware of the latest evolutions, please refer to our website www.inemotion.com

LED INFLATOR (IN&BOX IN AIRBAG PRODUCT)



Solid green:

Inflator full and connected **(airbag functional)**



Solid red:

Inflator not connected **(airbag not functional)**



No light:

In&box off **(airbag not functional)**

GPS LEDS



No light:
GPS inactive*

**The airbag system is functional but may not work in specific accident cases*

INFLATOR AND GPS LEDS



When the two upper LEDs are **flashing red**:



Airbag not functional

- Check your IN&MOTION subscription
- Connect your In&box to Wi-Fi or to your mobile app
- Contact IN&MOTION if the problem continues

Please note, if your monthly membership is suspended, your In&box will no longer be active during the entire suspension period.



Solid blue or flashing blue:

In&box synchronizing or updating.

Never activate the Reset button of your In&box when the LEDs are blue as it could disrupt the update process with risks for the In&box software!

BATTERY LED



Solid green:

Battery charged to 100%
(In&box plugged in)



Solid blue:

Battery charging
(In&box plugged in)



No light:

Battery charged (30 to 100%) or In&box off



Solid red:
Less than 30%
battery (about 8
hours of usage
time remaining)



Flashing red:
Less than 5%
battery (flashing
red light)
**Charge your
In&box!**

RESET BUTTON



In case of problem with your In&box, press the Reset button for 5 seconds to restart the In&box.

MOBILE APP

#1 GENERAL

The mobile app «**My In&box**» is available on Google Play and App Store.

For the first use only, connect to the app using the login and password created earlier when creating your user account. Once activated, the In&box is autonomous and does not need to be connected to the mobile app to be functional.*

This app is currently only compatible with the following mobile phones:

- iOS® : refer to the AppStore application sheet
- Android™ : refer to the Google Play Store application sheet
- Compatible Bluetooth Low Energy chip

**The mobile app is though necessary to change your detection mode.*

#2 UPDATES

It is essential to regularly update your In & box with the latest version in order to benefit from the best possible protection.

Regularly connecting your In&box to your Wi-Fi access point is really important in order to always benefit from the latest updates.

It is essential to connect at least once a year for yearly subscriptions and once a month for monthly subscriptions. If not, the In&box will be automatically blocked and will no longer work until the next connection.

Updates can be downloaded to the In&box in two ways:

1. «My In&box» mobile App

Connect to IN&MOTION's «My In&box» mobile app and follow the instructions on the app. **The In&box must be turned on, unplugged and not inserted into the airbag system.**

2. Wi-Fi access point

Please refer to the next section.

#3 SYNCHRONIZATION AND WI-FI ACCESS POINT

From the first use, configure your Wi-Fi access point using the mobile app «My In&box».

Once configured, your In&box will automatically connect to your **Wi-Fi access point** as soon as it is **plugged in, switched on and charging from a wall outlet within range of your Wi-Fi network.** The latest updates will download automatically and will synchronize your data anonymously.

Warning, your In&box must be turned on in order to connect to Wi-Fi.

The IN&MOTION detection system evolves thanks to the anonymous data collection of users. Data synchronization is therefore an important step in order to continuously evolve the system.



The two upper LEDs are **flashing blue alternately**: the In&box is seeking for a connection to your Wi-Fi access point.



The two upper LEDs are **flashing blue at the same time**: the synchronization and updating process is in progress.

Warning, do not activate the Reset button of your In&box when the LEDs are blue!

Compatible Wi-Fi access points:

Wi-Fi b/g/n with WPA/WPA2/WEP protection.
WEP and 2.4 GHz network bandwidth



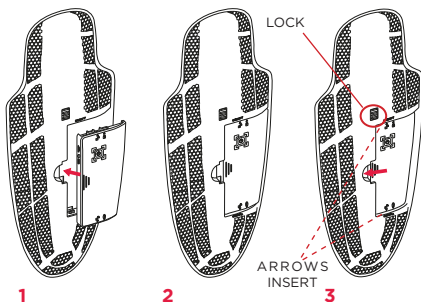
For more information, you can watch our In&box activation, Wi-Fi configuration and update tutorial video on our IN&MOTION Youtube channel: <http://bit.ly/InemotionTuto>

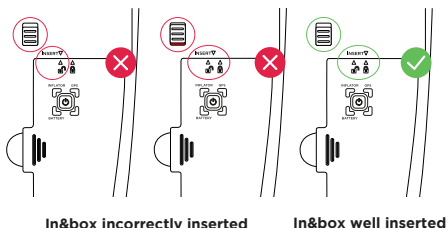
If you don't have a compatible phone, please follow the manual wi-fi configuration procedure available on your user area on the www.inemotion.com website.

AIRBAG SYSTEM

#1 INSERT YOUR IN&BOX INTO THE SHELL

1. Place the In&box into position.
2. The arrows indicated on the In&box **lock open** (up and down) must be aligned with the INSERT arrows indicated on the shell.
3. Using the lock, push the In&box to the left side to clip it into place.
The arrows indicated on the In&box **lock closed** must be aligned with the INSERT arrows indicated on the shell.
Warning, make sure the red locked marking is not visible.





#2 WEAR YOUR AIRBAG PRODUCT

For detailed specifications related to your IN&MOTION airbag system, please refer to the user manual provided with your product integrating the IN&MOTION airbag system.

#3 AFTER-INFLATION PROCESS

After a case of inflation, the procedure for checking and reactivating your airbag system is available in the user manual provided with the product integrating the IN&MOTION airbag system.



You will also find this procedure on our tutorial video available on our Youtube channel: <http://bit.ly/InemotionTuto> as well as in the mobile app «My In&box».

In case of damage or anomaly during the after-inflation process, do not use your airbag product and contact your local reseller.

TECHNICAL INFORMATION

CHARGING

Electrical characteristics: Input: 5 V  1,5 A

Compatible chargers: Use a EN60950-1 or EN62368-1 compliant USB charger.

Please note, only a compliant USB charger or a computer's USB port must be connected to the USB port of your In&box.

Altitude restrictions: Above 2000 metres (6561 feet), make sure that your charger is approved for this altitude before charging your In&box.

Battery replacement: Do not try to replace the In&box battery by yourself, you could damage the battery, which may in turn lead to overheating, fire and injury. Your In&box Li-polymer battery must be replaced or recycled by In&motion: it must be recycled or scrapped separately from general household waste and in accordance with your local laws and regulation.

Charging time: In optimal conditions, the time to charge the battery completely is about 3 hours.

TECHNICAL CHARACTERISTICS

Operating temperature: from -20 to 55°C (-4 to 131 °F)

Charging temperature: from 0 to 40°C (32 to 104 °F)

Storage temperature: from -20 to 30°C (-4 to 86 °F)

Relative humidity: from 45 to 75%

Altitude: use below 5000 metres (16 404 feet)

When used outside of those limits, the system may not work as intended.

RF Power

In&box out of the airbag product: Wi-Fi 2.4GHz-2.472GHz (< 50mW)

Bluetooth 2.4GHz-2.483GHz (<10mW)

In&box inserted into the airbag product: Bluetooth
 2.4GHz-2.483GHz (<10mW)
 GPS reception frequencies

1565.42 - 1585.42MHz (GPS)
 1602 - 1610 MHz (GNSS)

Bluetooth® LE mode

Radio Frequency (RF) Exposure Compliance of Radiocommunication portable apparatus

This device complies with FCC and ISED Canada RF radiation exposure limits set forth for general population (uncontrolled exposure). This device must not be collocated or operating in conjunction with any other antenna or transmitter.

WIFI mode

Radio Frequency (RF) Exposure Compliance of Radiocommunication for mobile Apparatus

To satisfy FCC and IC RF Exposure requirements for mobile devices, a separation distance of 20 cm or more should be maintained between the antenna of this device and persons during operation. To ensure compliance, operation at closer than this distance is not recommended. This transmitter must not be co-located or operating in conjunction with any other antenna or transmitter.

In&box waterproofness: Excessive exposure to water will cause the vest to function improperly. It is recommended for use only under a waterproof protection garment designed for two-wheeled motor vehicle users.

Warning, it has not been designed to be submerged.



RECYCLING

Instructions regarding the product's end-of-life:

The symbol opposite indicates that in accordance with your local laws and regulations, you must dispose of this product/battery separately from household waste.

When the product's validity expires, please bring it to a collection system designated by local authorities. Separate collection and recycling of your product and/or battery during disposal will help preserve natural resources and ensure that it is recycled to protect human health and the environment.

CERTIFICATIONS

CE certification:

IN&MOTION declares that the In&box complies with the essential requirements and other relevant provisions of the RED directives (Radio Equipment Directive) 2014/53/EU and RoHS 2011/65/EU.

A copy of the Declaration of Conformity for the European Union is available at the following address:

https://my.inemotion.com/documents/moto/declaration_of_conformity.pdf?v=1545323397

FCC / ISED certification :

Changes or modifications not expressly approved by In&motion could void the user's authority to operate the equipment.

FCC Part 15 compliance statement

This device complies with part 15 of the FCC Rules. Operation is subject to the following two conditions:
(1) This device may not cause harmful interference, and
(2) this device must accept any interference received, including interference that may cause undesired operation.

NOTE: This equipment has been tested and found to comply with the limits for a Class B digital device, pursuant to part 15 of the FCC Rules. These limits are designed to provide reasonable protection against harmful interference in a residential installation. This equipment generates, uses and can radiate radio frequency energy and, if not installed and used in accordance with the instruction, may cause harmful interference to radio communications. However, there is no guarantee that interference will not occur in a particular installation. If this equipment does cause harmful interference to radio or television reception which can be determined by turning the equipment off and on, the user is encouraged to try to correct interference by one or more of the following measures:

- Reorient or relocate the receiving antenna.
- Increase the separation between the equipment and receiver.
- Connect the equipment into an outlet on circuit different from that to which the receiver is connected.
- Consult the dealer or an experienced radio/TV technician for help.

Licence-Exempt Radio Apparatus (ISED)

This device contains licence-exempt transmitter(s)/ receiver(s) that comply with Innovation, Science and Economic Development Canada's licence-exempt RSS(s). Operation is subject to the following two conditions:

1. This device may not cause interference.
2. This device must accept any interference, including interference that may cause undesired operation of the device.

Patent:

This system is protected by patent number «**European Patent 3.250.064**» and «**U.S. Pat. 10,524,521** »

WARNINGS

#1 IN&MOTION AIRBAG SYSTEM USE

The IN&MOTION airbag system is a new, intelligent device that must be used only for the application to which it is intended, and with the detection mode dedicated to this practice.



Do not use it for any other application that would not correspond to the detection mode selected (use on Street, Adventure).

This system is designed to offer comfort and high protection, though no product or protection system can offer complete protection from injury or damage to individuals or property in case of fall, collision, impact, loss of control or otherwise.

If the user engages in excessive speed, violates traffic laws, or otherwise operates the motorcycle in an unsafe manner the ability of the device to protect the user and avoid or eliminate injury may be eliminated.

Any modification or improper use may negatively impact the system performance. Do not, under any circumstances, modify your airbag system, the In&box or its components in any way. Only the parts of the body covered by the protection may be protected against impact. The IN&MOTION airbag system can never be considered as a substitute for protective equipment such as helmets, goggles, gloves, or any other protection device.

#2 WARRANTY

To the fullest extent permitted by applicable law, the In&box is provided to our dealers or customers “as is” and “as available”, with all faults, and, except as expressly provided for in this manual, In&motion hereby disclaims all warranties of any kind, whether express, implied, statutory or otherwise, including without limitation warranties of merchantability, fitness for a particular use, and satisfactory quality.

Any warranty required by applicable law is limited to 2 years from the date of purchase (for In&box acquisitions) and applies only to the original user.

For In&box leases, a dedicated customer service representative is available allowing In&box exchanges if the problem cannot be solved remotely. This warranty is limited to the original user.

The In&box is personal and cannot be lent or sold.

This warranty does not apply in the event of abuse, negligence, carelessness or modification, improper transport or storage, improper installation and/or adjustment, misuse, or if the airbag system is used in any way other than is intended and not in compliance with the present manual.

Do not dismantle or open the In&box. Do not place the In&box under water. Do not bring the In&box close to a source of heat. Do not put the In&box in a microwave. Do not repair or replace any part or accessory with a part or accessory that is not an original In&motion item covered by these warranty terms. Do not have the In&box repaired or handled by any party other than In&motion.

IN&MOTION makes no other warranties, either expressed or implied, with respect to this information.

#3 DETECTION CONDITIONS

User security is IN&MOTION's primary concern.

As part of our obligation of means, we strive to implement all the technological solutions that we have available so that the In&box detection system can ensure the best degree of protection and comfort.

However, the user of this protection system is responsible for his/her protection, and the detection system is developed by In&motion to provide optimal protection only during responsible and respectful behaviour on the road. In&motion does not guarantee the absence of damage. The IN&MOTION detection system cannot make up for behaviour that is dangerous, disrespectful or in conflict with road safety regulations.

1. Detection modes

The detection modes make it possible to adjust the settings of the conditions for detecting a fall or an incident and therefore the inflation of the airbag cushion to adapt to the specificities of each practice.

Two detection modes have been developed by IN&MOTION:

- **STREET mode:** designed to be used exclusively on roads prepared for the circulation of vehicles (ie a road with a suitable asphalt covering for public access)

- **ADVENTURE mode:** designed to be used only for off-pavement practice on unpaved roads that would be suitable for standard automobiles (ie a public road wider than a path and which is not designed for vehicle traffic in general.)

Exclusions: :

STREET mode is not designed to be used on closed roads, in particular for road rallies, hill climbs etc...; nor on non-drivable road (road without asphalt); nor for the practice of stunts.

ADVENTURE mode is not designed to be used for any other type of practice: motocross, freestyle, hard enduro, trial, quad.

The selection of the detection mode is carried out under the sole responsibility of the user who must ensure before each use that they have selected the detection mode suitable for their practice.

The selection is made via the dashboard of the «My In&box» mobile application, which allows the user to change and control the selected detection mode. In the event of a new mode available, the user must first update their In&box to download this new mode which then appears in the mobile application. For more details about updating, please refer to the “**Updating**” section of this manual.

IN&MOTION does not accept any liability for damage caused in situations where the mode selection was not appropriate or in applications or practices other than those mentioned above.

2. Detection performances

Based on data collected from users⁽¹⁾, more than 1200 real crash situations have been analyzed. The software⁽²⁾ offers to date in STREET mode an average detection rate of 91% for all types of crashes.

The detection rate means the percentage of cases in which the In&box detects, during an accident, a fall and issues a request to inflate the airbag system, in the event that the conditions of use referred to in this manual have been observed by the user.

Software updates are regularly released by IN&MOTION to all users to further improve this detection rate. Please refer to the release notes available online at www.inemotion.com for further details regarding the product performance associated with each software version.

*(1) at the date of edition of this version of the user manual
(2) the June 2021 software version is called "Turini-6.0.0"*

3. Detection modes specificities

Specificities of the STREET detection mode

STREET mode is automatically included in any IN&MOTION membership (Revolution or Regular formula).

It has been developed specifically for accidents and falls in traffic on open roads, particularly related to loss of grip or a collision.

Specificities of the ADVENTURE detection mode

In order to benefit from cases of detection for ADVENTURE mode, it is necessary to have previously

activated the ADVENTURE mode by having subscribed to the dedicated option. This dedicated option is available on the IN&MOTION website: www.inemotion.com.

The settings of this detection mode differ from STREET mode to adapt to “off-road” type use with more vibrations, situations of limited grip, light jumps while integrating loss of balance at low speed not causing the need for inflation.

4. Data processing

The IN&MOTION detection system is upgradeable, and the detection algorithms can be updated thanks to the anonymous collection of user data.

For any information regarding the data collected by IN&MOTION, please refer to our Privacy Policy available on our website www.inemotion.com

[Warning] We remind you that the user must respect speed limits and the rules of the road in force in the country in which he/she is riding.

[Warning] The detection system uses the In&box’s GPS signal to optimise triggering cases. When the system doesn’t detect or detects the GPS signal poorly, the system’s degree of detection is not at the level of performance achieved with an optimal GPS signal.

[Warning] The detection system only works if the In&box is correctly charged.

The lighting code of the In&box LEDS allows the user to make sure that the In&box has been correctly charged. Battery consumption needs to be monitored by the user to ensure that the trigger system remains active during the journey.

[Warning] The detection system detects abnormal movements that are likely to result from a falling motorcyclist. In some extreme or unusual situations, the system may be triggered without the motorcyclist falling. As of June 1st*, 2021, there have been no cases of unwanted inflations leading to falls reported by

users to In&motion.

** date of edition of this version of the user manual*

IN&MOTION cannot be held responsible in case of an unwanted trigger.

IN&MOTION airbag system and air transportation



Always turn off your airbag system before using air transportation and remove In&box from the airbag system before flying!

IN&MOTION recommends keeping this user manual with the airbag system and with the In&box while travelling, especially by plane.

You can download the documentation corresponding to air transportation in the *support* section of the www.inemotion.com website.

IN&MOTION cannot be held liable in the event an airline refuses to transport the product by airplane.



WARNING: Since almost all electronics products contain one or more of the chemicals listed under Proposition 65, this product can expose you to chemicals which are known to the State of California to cause cancer, although the exposure may be well within the "no significant risk" range. For more information, go to www.P65Warnings.ca.gov.

REGISTERED TRADEMARK

IN&MOTION® is a trademark owned by In&motion
Bluetooth® word mark and logos are registered trademarks owned by Bluetooth SIG, Inc.

Android™ is a trademark of Google LLC

iOS® is a registered trademark of Cisco