



- | Specifications       |                                 |
|----------------------|---------------------------------|
| LTE Band:            | LTE FDD B2 B4 B12 UMTS/HSPA+ B2 |
| GPS:                 | Class12, TCP/IP                 |
| Working Voltage:     | 3.4-4.2V DC                     |
| GPS Precision:       | ±5m                             |
| Working Temperature: | -20℃~+70℃                       |
| Working Humidity:    | 20%~80%RH                       |
| GPS Sensitivity:     | -108dB                          |
| Waterproof:          | IP64                            |

GT-100 LTE GPS Tracker:	3400mAh
GT-200 LTE GPS Tracker:	6800mAh
GT-300 LTE GPS Tracker:	10000mAh

---

- f. Keep away from the fire source and heat.
- g. Water resistant IP64, cannot be used under water.
- h. You must accept ABLEGRID End-User-Agreement, for the detailed agreement, please visit [www.ablegrid.com](http://www.ablegrid.com).

1. Please visit [www.ablegrid.com](http://www.ablegrid.com), click "Simcard Activation"

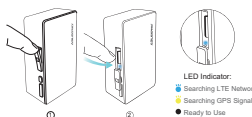


2. Input SIM Card IMEI#, **starts** with 89, you can find it on the back of the SIM card (**digits** only, **letters** not included)



4. Receive Notification E-mail with SIM Card Phone Number  
Your Tracking Plan:  
Your SIM Card Phone Number:  
Cost:

1. Device is Powered On by Inserting the SIM Card A T-mobile SIM card is pre-installed, please use your finger nail to press it to fit in.



- 

1. Search 'AbleGrid GPS Tracker' on your cellphone Apple APP Store or Google Play Store and install the APP. Open the APP and hit 'Register' on the top right.
2. Input your E-mail address, full name and your cellphone number to create your account.



3. Please check both your inbox and spam to get the password to access to your account.
4. Click "GPS Tracker List" to add your tracker. Choose the correct model of your tracker, input the name and IMEI#. You can get the IMEI# on the bottom of the tracker, starts with 35, then click "Add".



6. Congratulations! You have added the tracker to your account successfully.  
Please enjoy your time with ABLEGRID GPS tracker.
- You can also track with full features through our website [gps.ablegrid.com](https://gps.ablegrid.com) with the same username and the password.

Please visit [reg.ablegrid.com](http://reg.ablegrid.com), input your E-mail address to create your account.

- GPS Tracker Registration Login**  
Please check both your inbox and spam to get the password.
- Add the Tracker to Your Account**  
Please note the GPS Tracker IMEI# is on the bottom of the device, starts with 35. The SIM card IMEI# starts with 89, you can find it on the back of the SIM card.



- Congratulations! You have created your account and added the tracker to your account successfully.

3. Search "AbleGrid GPS Tracker" on Apple APP Store or Google Play Store and install the APP, login with your registered account, then you can track and view on ABLEGRID APP.

### 1. Location Link

- Text: **URL#**  
Response: A Google map link
2. **Properties**  
Text: **Q#**  
Respond: IMEI#, APN, IP, GSM, GPS, Battery Life  
BAT 3.8-4.2 (low to high)
3. **Restore Factory Setting**  
Text: **RF#**
4. **Setup Center Number**  
Text: **CENTER\_000000,phone number#**  
Delete Center Number  
Text: **CENTER\_000000,0#**
5. **Vibration Alarm**  
Text: **VACN#** (on)  
Text: **VACOFF#** (off)  
\*Default Setting: Off
6. **Over-speed Alarm**  
Text: **OS\_100#** (on)  
Text: **OS\_OFF#** (off)  
\*Default Setting: Off  
\*Default Alarm Speed: 100km/h

### 1. SMS+GPRS Mode

- Text: WKMD,0x20#  
(The tracker will update its location to the server every 20 seconds)  
Respond: WKMD,0 OK  
Time Gap: 20.30.40.50.60.70.80.90.100.110.120  
(Default Setting 60 seconds)  
You can view location via SMS, APP, WEB platform simultaneously.
- 2. SMS Only Mode**  
Text: WKMD,1#  
Respond: WKMD,1 OK  
You can only view location by sending SMS command [URL#](#), please send command to set it to SMS+GRPS Mode when you need to track through APP and WIFI platform.

- Text: WKMD,2#  
Respond: WKMD,2 OK  
The tracker stops working under this Long Standby Mode. Resend the command to set it to SMS+GPRS Mode or SMS Only Mode when you need to track.

For data mode and setting online on ABLEGRID website [gps.ablegrid.com](http://gps.ablegrid.com)  
For simple in or out Geo-Fence, you can just use mobile APP as well.

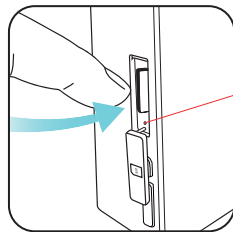
This equipment has been tested and found to comply with the limits for a Class B digital device, pursuant to Part 15 of the FCC Rules. These limits are designed to provide reasonable protection against harmful



# QUICK START

## I. Turn On

Press Pre-installed SIM Card to Power On



### LED Indicator

- Searching LTE Network
- Searching GPS Signal
- Ready to Use

## II. Activate SIM Card

A. Visit [www.ablegrid.com](http://www.ablegrid.com), click “Simcard Activation”

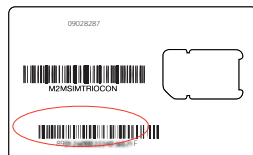


C. Choose Subscription Plan

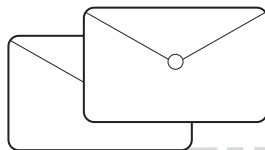
Subscription Plan	
3-month Basic Realtime Data Plan	\$36.00
Discount	-\$7.20
Total: \$28.80	

B. Input SIM Card IMEI#

89\*\*\*\*\* (F not included)

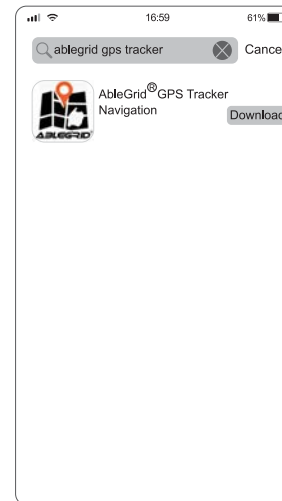


D. Get SIM Card Phone Number through Notification Email

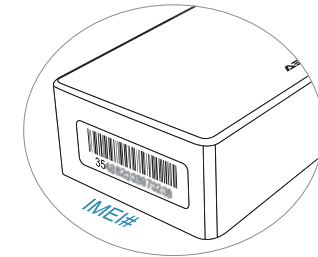


## III. Register Account

A. Download “Ablegrid® GPS Tracker” on APP Store or Google Play Store



C. Get IMEI# to add GPS Tracker



**ADD GPS TRACKER**

Choose One From the Below GPS Trackers

GT-100 GT-200 GT-300

Please Complete the Below Information

GPS Tracker Name

IMEI#

Scan to get the IMEI#

**Add**

B. Register Management Account

**Register**

**ABLEGRID**

E-mail  Please input

Full Name  Please input

Phone Number  [Option]  
if you are in North America, please input a 10 digits phone number, otherwise, leave it blank.

Time Zone  Please select

**Sign up**

You have agreed to [Terms and Conditions](#) if you login

## IV. Ready-to-Use

