

User Manual

Model : QC-336A

Contents

1. Front Side
2. Rear Side
3. Label Information
4. Size
5. Installation
6. FCC Regulatory Statement

1. Front Side

LED Name	Internet
LED Color	Green, Red
Description	Indicating the Internet Link Status Status

LED Name	5G
LED Color	Green, Red
Description	Indicating the 5G Service Status



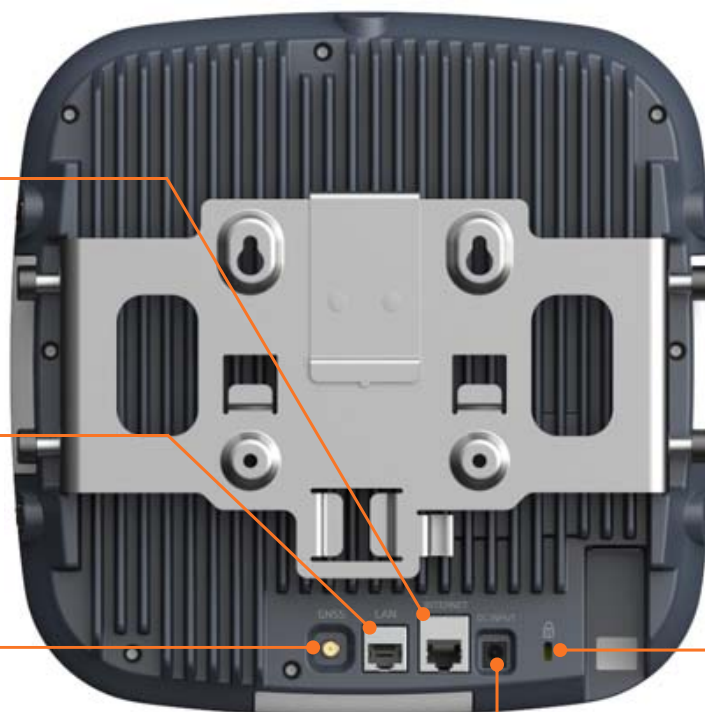
LED Name	(Power)
LED Color	Green
Description	Indicating the Power Input Status

2. Rear Side

Port Name	INTERNET
Connector	RJ-45
Description	1G/2.5Gbps Backhaul PoE++ (IEEE802.3bt) PTP

Port Name	LAN
Connector	RJ-45
Description	1Gbps Management

Port Name	GNSS
Connector	SMA Female
Description	GPS Antenna Input



Port Name	RESET
Connector	Pin Hole
Description	Reset or Factory Reset

Port Name	(Kensington Lock)
Connector	Security Slot
Description	Anti-theft system

Port Name	DC INPUT
Connector	Power Connector
Description	DC Power Input

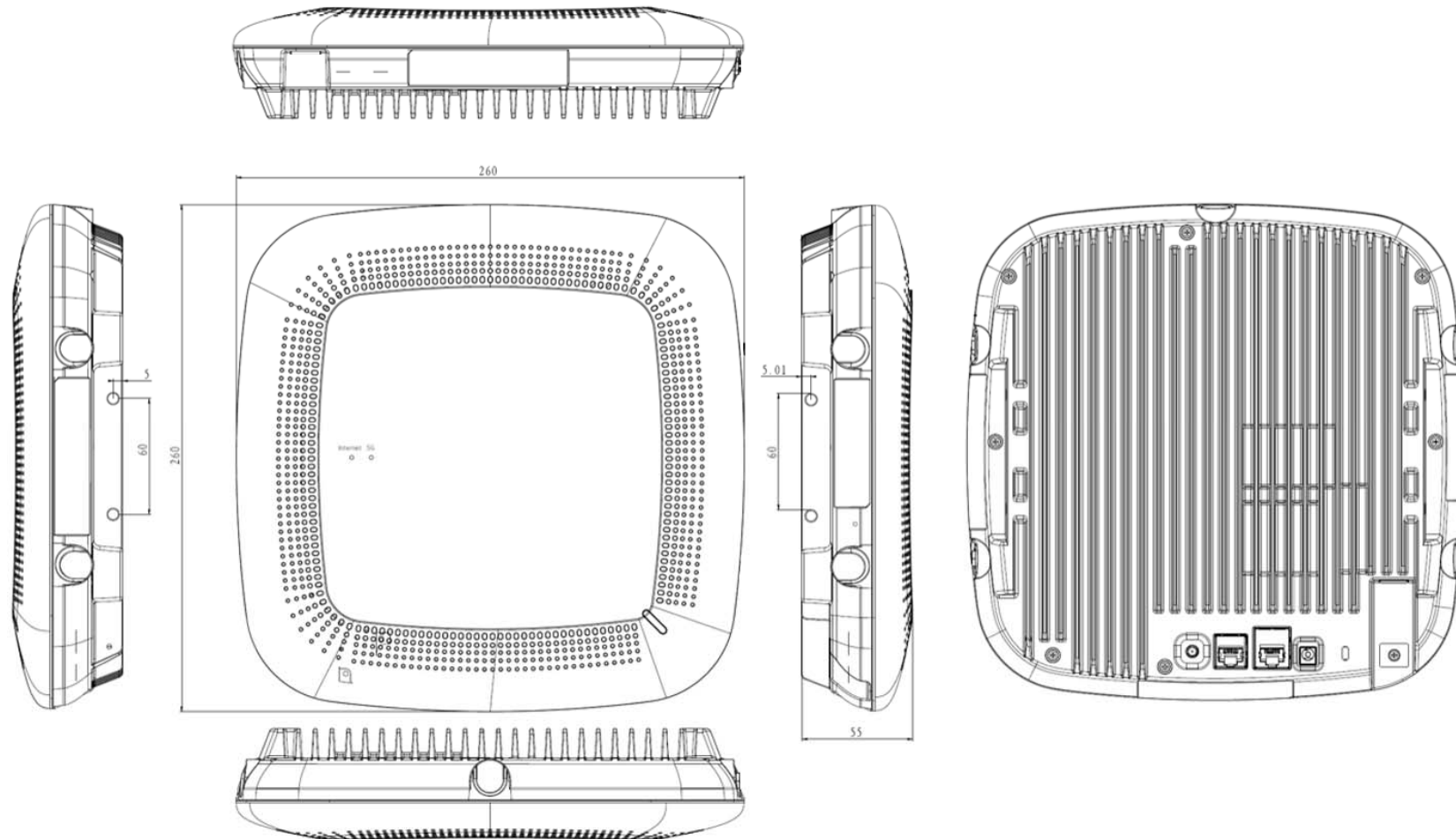
3. Label Information



#	Label Type	Label Information
①	Service Label	Model, S/N, QR Code
②	Product Label	Model, Power, Company, FCC ID
③	Warning Label	Hot Surface Warning
④	Warranty Seal	Warranty

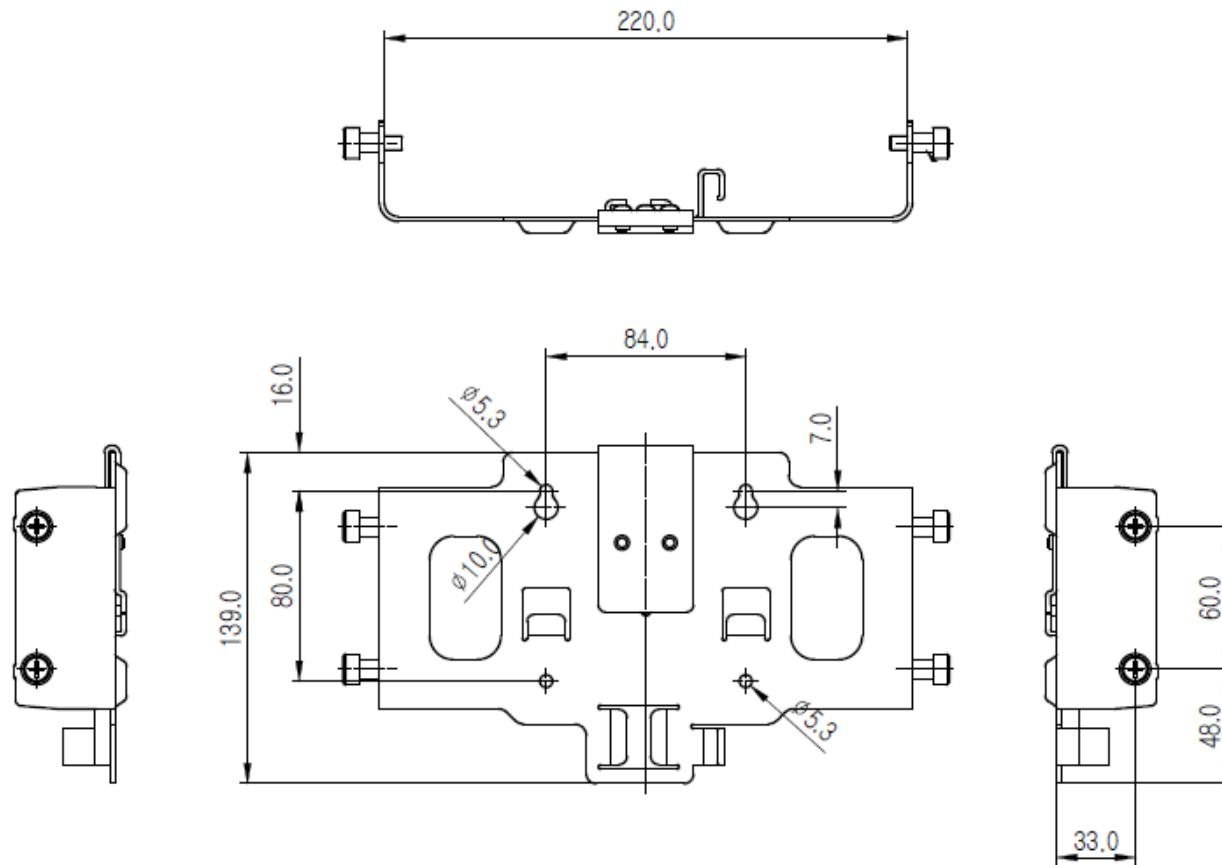
4. Size

Enclosure



4. Size

Mount Bracket

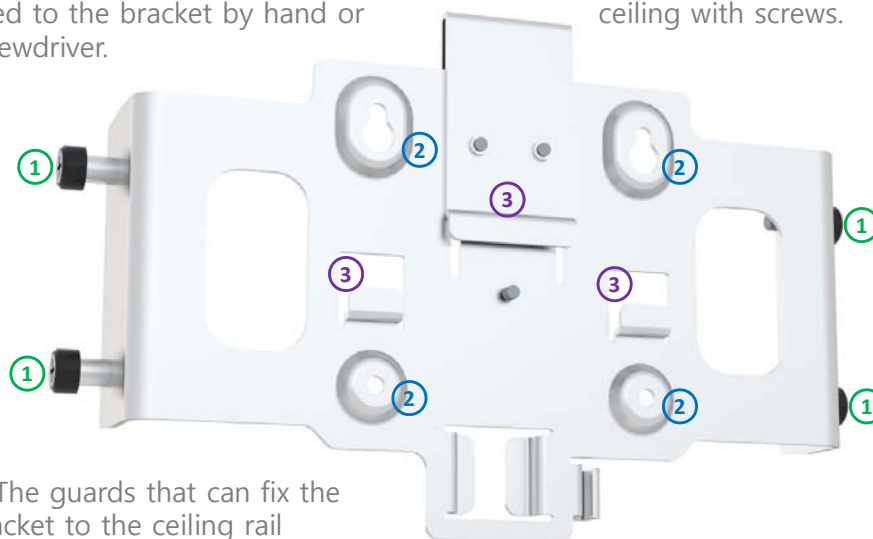


5. Installation



1. Four captive screws that allows the small cell body to be fixed to the bracket by hand or screwdriver.

2. Four holes for screw which can be fixed to the wall or ceiling with screws.

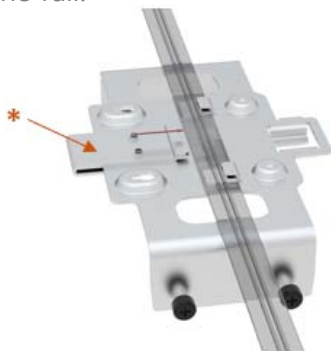


3. The guards that can fix the bracket to the ceiling rail system.

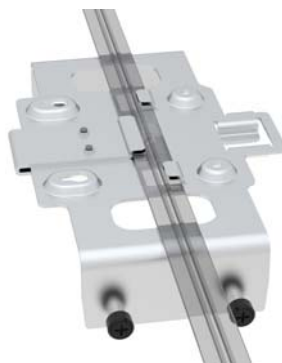
5. Installation

Ceiling mounting (Rail mount method)

- 1 Fit the bracket to the rail and push the slide(*) to the rail.



2



- 3 Use a screw to fix the slide.



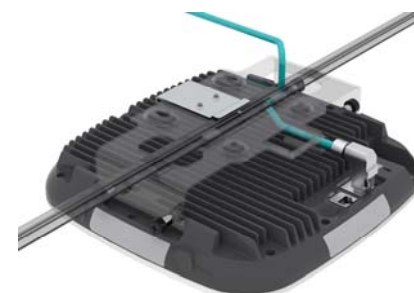
- 4 Fix the device to the captive screw to the bracket.



5



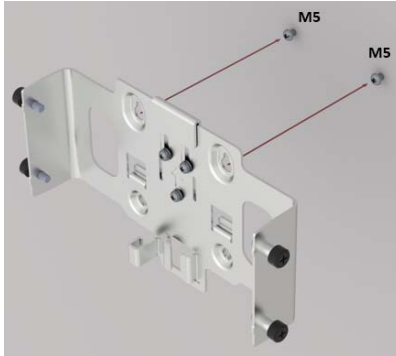
- 6 Connect the cables.



5. Installation

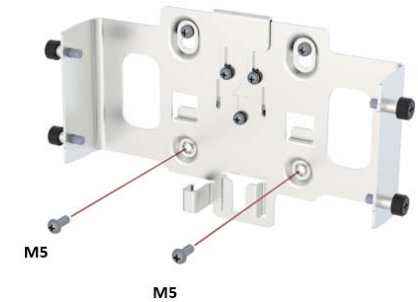
Wall, Ceiling mounting (Screw fixing method)

- 1 Fix the two screws upper of the bracket to the wall first.



- 2 Hang the bracket.
If it is a ceiling, you must hold it with your hand so that the bracket does not fall.

- 3 While hanging the bracket, fix the remaining two screws to the wall or ceiling.



- 4 Fix the device to the captive screw to the bracket.



- 5



- 6 Connect the cables.



6. FCC Regulatory Statement

FCC Part 15.19 Statements	This device complies with Part 15 of the FCC Rules. Operation is subject to the following two conditions: (1) this device may not cause harmful interference, and (2) this device must accept any interference received, including interference that may cause undesired operation.
FCC Part 15.105 statement	<p>This equipment has been tested and found to comply with the limits for a Class B digital device, pursuant to part 15 of the FCC Rules. These limits are designed to provide reasonable protection against harmful interference in a residential installation. This equipment generates, uses and can radiate radio frequency energy and, if not installed and used in accordance with the instructions, may cause harmful interference to radio communications. However, there is no guarantee that interference will not occur in a particular installation. If this equipment does cause harmful interference to radio or television reception, which can be determined by turning the equipment off and on, the user is encouraged to try to correct the interference by one or more of the following measures:</p> <ul style="list-style-type: none"> - Reorient or relocate the receiving antenna. - Increase the separation between the equipment and receiver. - Connect the equipment into an outlet on a circuit different from that to which the receiver is connected. - Consult the dealer or an experienced radio/TV technician for help.
FCC Part 15.21 statement	Any changes or modifications not expressly approved by the party responsible for compliance could void the user's authority to operate this equipment.
MPE distance	The antenna(s) must be installed such that a minimum separation distance of at least 20 cm is maintained between the radiator (antenna) and all persons at all times.
Responsible Party information	<p style="text-align: center;">Supplier's Declaration of Conformity 47 CFR § 2.1077 Compliance Information</p> <p>Unique Identifier: (e.g., Trade Name, Model Number): QC-336A</p> <p>Responsible Party – U.S. Contact Information</p> <p>Accuver Americas 500 N. Central Expressway Plano, TX 75074 Tel : +1 469 241 6100 E-mail : sales@accuver.com</p>

Thank you!
