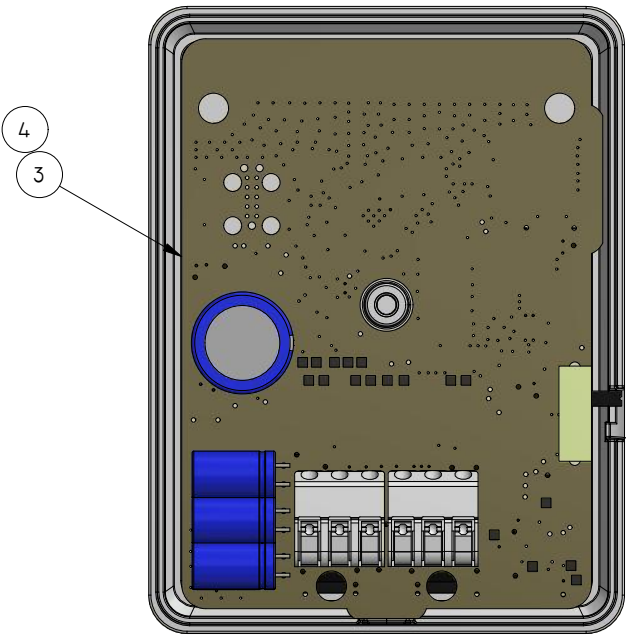


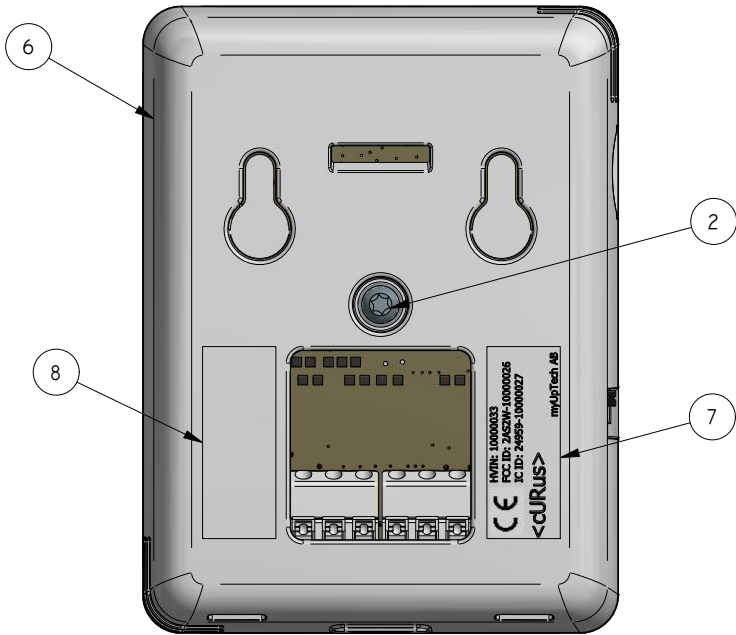
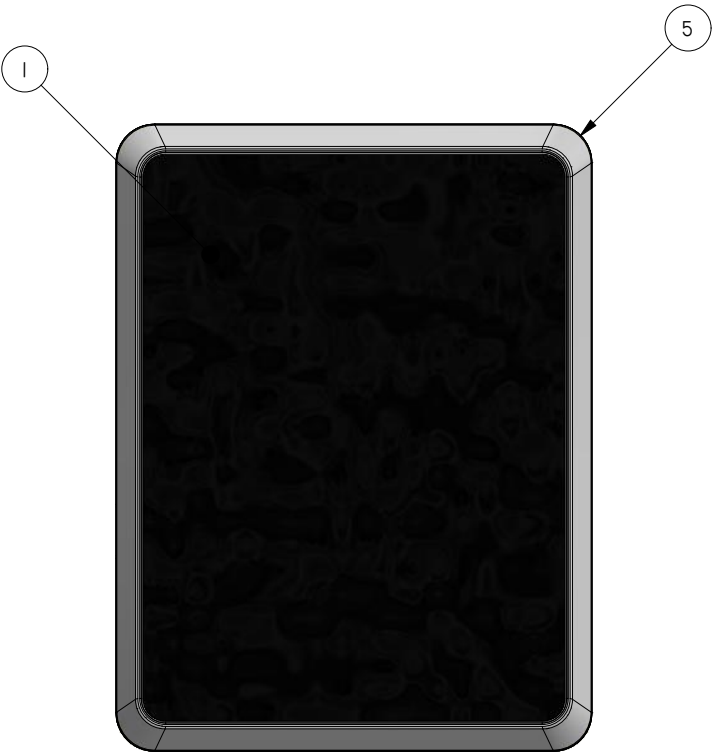
REVISION HISTORY			
REV	DESCRIPTION	DATE	APPROVED
0	INITIAL RELEASE FOR CERTIFICATION PURPOSES	5/28/19	KW



PARTS LIST-10000033			
ITEM	PART NUMBER	DESCRIPTION	QTY
1	256423	DISPLAY W/ TAPE	1
2	016904	SCREW	1
3	318605	PCBA	1
4	10000025	RADIO SOFTWARE (VER. 0.2.0)	1
5	036932	FRAME	1
6	036933	HOUSING	1
7	10000031	LABEL, COMPLIANCE, CE, UL, FCC/IC	1
8	331800	LABEL	1

NOTES:

1. ASSEMBLY IS TO MARKED WITH LABELS ACCORDINGLY. LABELS SHOWN ARE EXAMPLES ONLY TO SHOW ROUGH PLACEMENT, AND SHOULD BE REVIEWED BASED ON LATEST PART DRAWING. FINAL PRODUCTION ASSEMBLY MAY VARY SLIGHTLY.
2. PACKAGING IS TO BE CARRIED OUT SO THAT PROTECTION REGARDING ESD AND MECHANICAL IMPACT IS FULLFILLED.
3. EACH BATCH SHOULD BE ACCOMPANIED BY A COPY OF THE FOLLOWING:
-DATA SHEET: ARTICLE NO. 10000030
-DECLARATION OF CONFORMITY: ARTICLE NO. 10000032
-AUTHORIZATION TO MARK FOR SAFETY: ARTICLE NO. TBD
4. IN CASE OF INCOMING INSPECTION, PLEASE REFER TO IPC-A-610 CLASS 2.



TOP VIEW

BOTTOM VIEW

10000033

<div>JPI</div>	10000033	0	ASM, HMI-L	
	PART NUMBER	REV.	PART NAME	
	ASM, HMI-L, CERTIFIED		MATERIAL SPEC.	
	DESCRIPTION		K. WILLS	1/25/2019
CRITICAL CHARACTERISTICS		DESIGNER		DATE
PROPRIETARY AND CONFIDENTIAL. THE INFORMATION CONTAINED IN THIS DRAWING IS THE SOLE PROPERTY OF NIBE/JPI. ANY REPRODUCTION IN PART OR AS A WHOLE, WITHOUT WRITTEN CONSENT, IS PROHIBITED.		CHECK		DATE
		SIZE	B	SHEET 1