

ARCHISKETCH Device & Application

USER MANUAL

Table of Contents

01. Configuration

02. Part Names

03. User Manual : Device

3-1. power On/Off

3-2. How to dock

3-3. Device reset

3-4. Charging

3-5. Status indicating light

p.03

p.04

p.05

p.07

p.07

p.08

p.08

p.09

04. User Manual : Application

4-1. Installation

4-2. Interlock with smart phones : Start

4-3. Interlock with smart phones : Error page

4-4. Measurement

4-6. Check Measurements

4-7. Upload Drawing Data

p.11

p.13

p.13

p.14

p.15

p.16

p.16

05. Handling and Safety instructions

p.17

06. Supporting Devices

p.19

07. Product Specifications

p.21

1. Configuration

The package is configured as follows

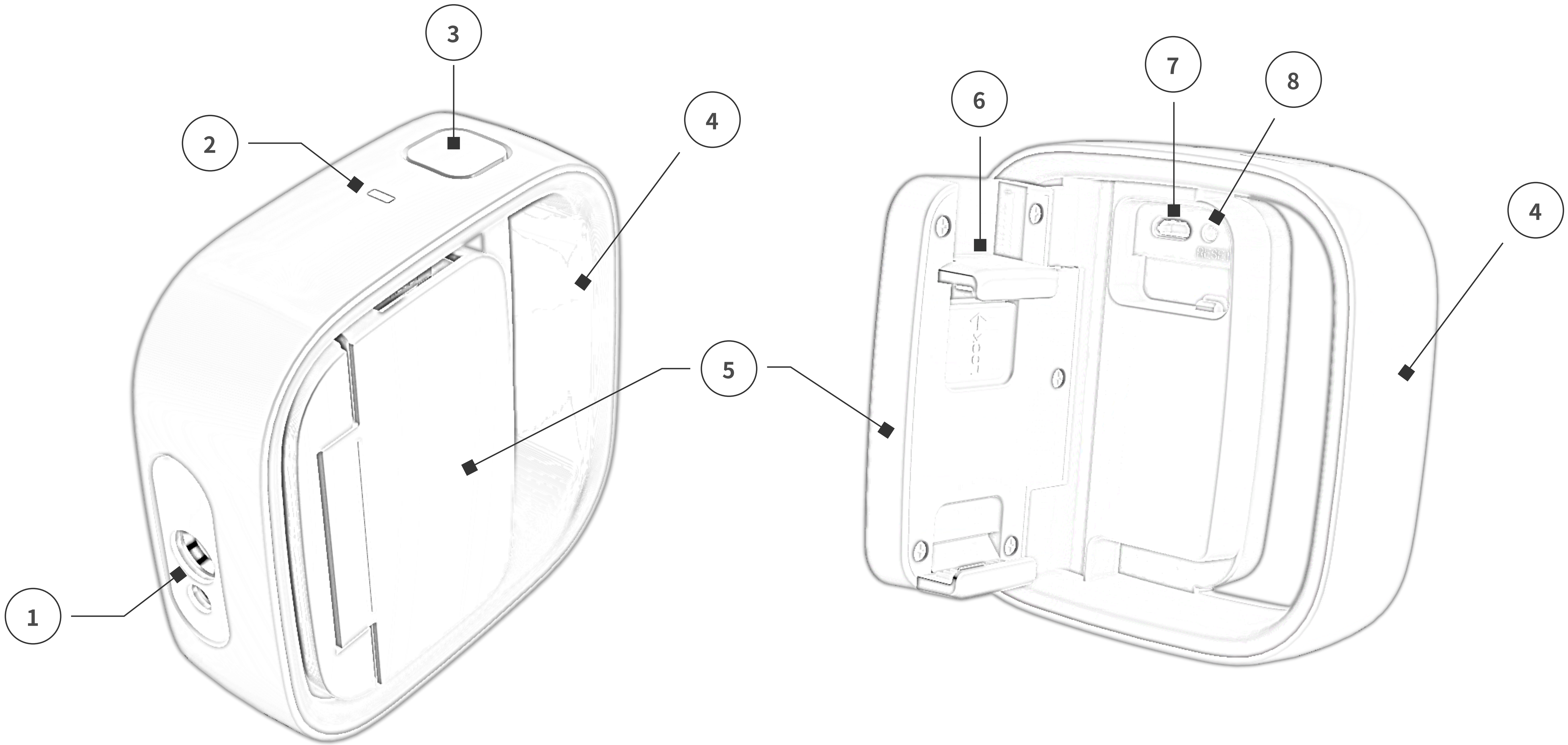


ARCHISKETCH : Device
100(L)x100(W)x30(H) mm * 1PC



USB for Charging (B-Type)
*1PC

2. Part Names



- | | | | |
|-----------------|---------------------------|-----------------------|----------------|
| ① Device sensor | ② Status indicating light | ③ Power On/Off button | ④ Handle |
| ⑤ Device folder | ⑥ Phone holder | ⑦ Charging terminal | ⑧ Reset button |

03. ARCHISKETCH

**USER MANUAL
: DEVICE**

3-1. Power On/Off



1. Press and hold the power button (③) for longer than 5 seconds.
2. Check **Greed LED** on status indicating light (②) The power will not be turned on if the battery is lower than 3.3V.

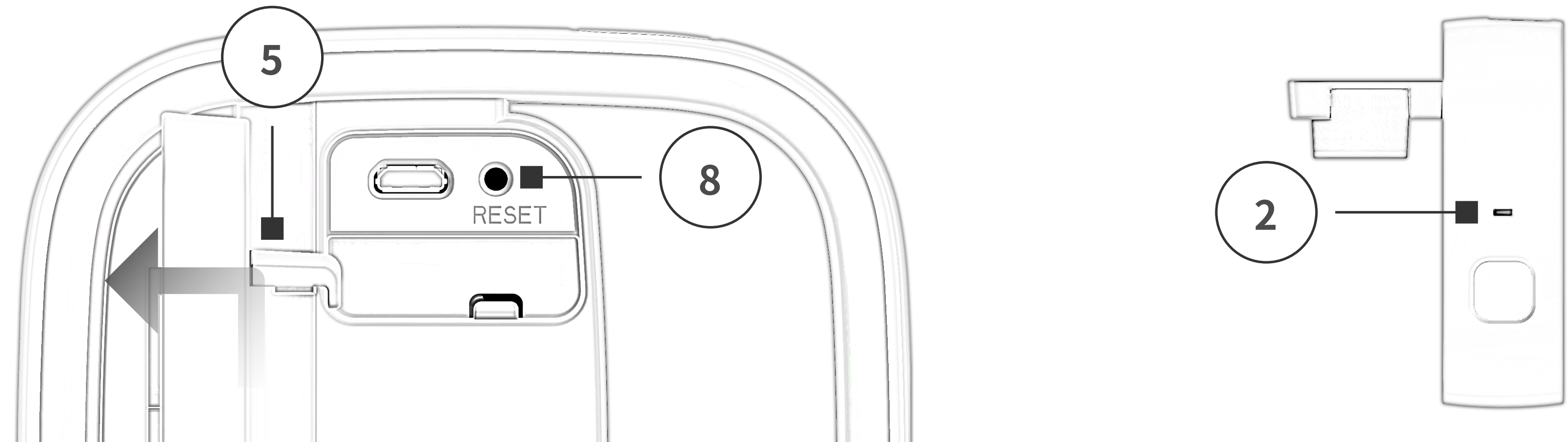
3-2. How to dock



1. Open the product folder (⑤) and pull [LOOK→] holder (⑥) to the right.
2. Insert the mobile phone in between the holder (⑥) so that the bottom of the mobile contacts the bottom of the device.

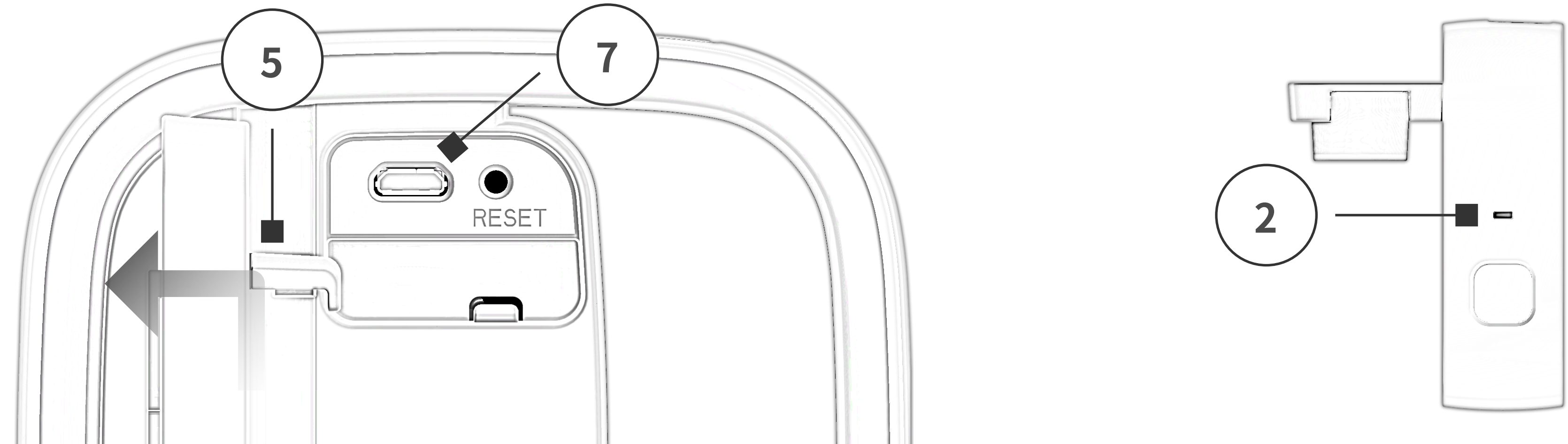
3-3. Device reset

Please follow below instruction when the product stops or malfunctions.



1. Open the product holder (⑤) and press Reset button (⑧).
2. Check the interlock through LED display (②) and use the product again.

3-4. Charging



1. Open the folder (⑤) and connect the charging port (⑦) with **the included USB cable** or **other B-type USB charging cable**.
2. After connecting the charging port (⑦) with the USB cable, check the charging status through status indicating light (②).

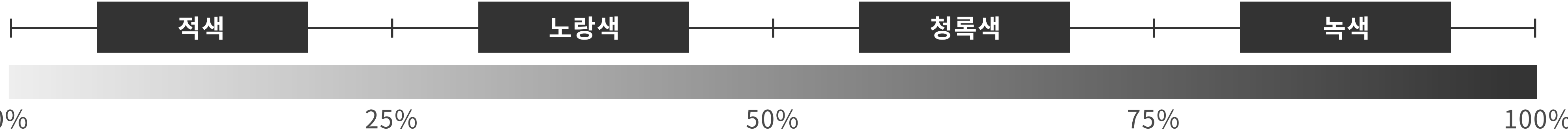
3-5. Status indicating light

Status indicating light shows the product status as follows :

3-5-1. LED light in general

Status	LED light
When the product is turned on	Green LED
When the product is connected in Bluetooth	Blue LED
When the battery is lower than 3.3V	Red LED flashes (1 sec cycle)

3-5-2. When starts charging

Status	LED light
When charging starts in the begining	Red LED
When charging starts after using the product	Red LED is lit for the first 1-3 secs and the color changes according to the battery condition 
When charging is complete	Green LED
When the battery is fully charged	Green LED
When the product is not charged	When the battery is lower than 3.3V, the product will be turned off
	When the battery is lower than 3.5V, Red LED flashes (1 sec cycle)

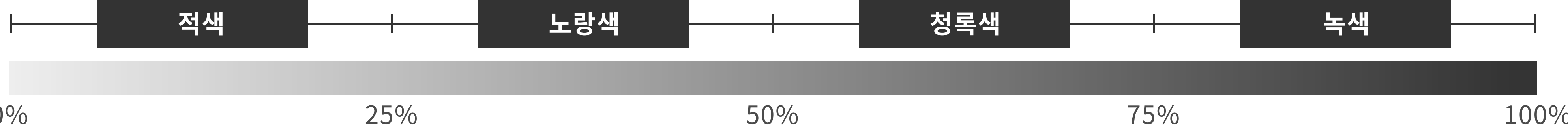
3-5. Status indicating light

The product shows following LED light according to its state :

3-5-3. When the battery charging is disconnected:

Status	LED light
When the battery is higher than 3.3V	Under Bluetooth connection: Blue LED
	Under no Bluetooth connection: Green LED
When the battery is lower than 3.3V	Red LED flashes (1 sec cycle)

3-5-4. When the product is turned on while charging with turned off

Status	LED light
When the product is turned on while charging with power turned off	LED lights in Green for 1 second and changes its color according to the battery charging status 

04. ARCHISKETCH

**USER MANUAL
: APPLICATION**

4-1. Installation



1. Please search “**ARCHISKETCH**” in **Google Play store** or **Apply App store**
2. The device is required to use **Android 7.0 incorporating ARCore** or **iOS 11.0** (See P. 19, Supporting Device for more details)

4-2. Interlock with smart phones : Start



1. After running the application, click [**Connect Device**] at the bottom of the page
- * Click the button after checking **the power of both the product and Bluetooth**

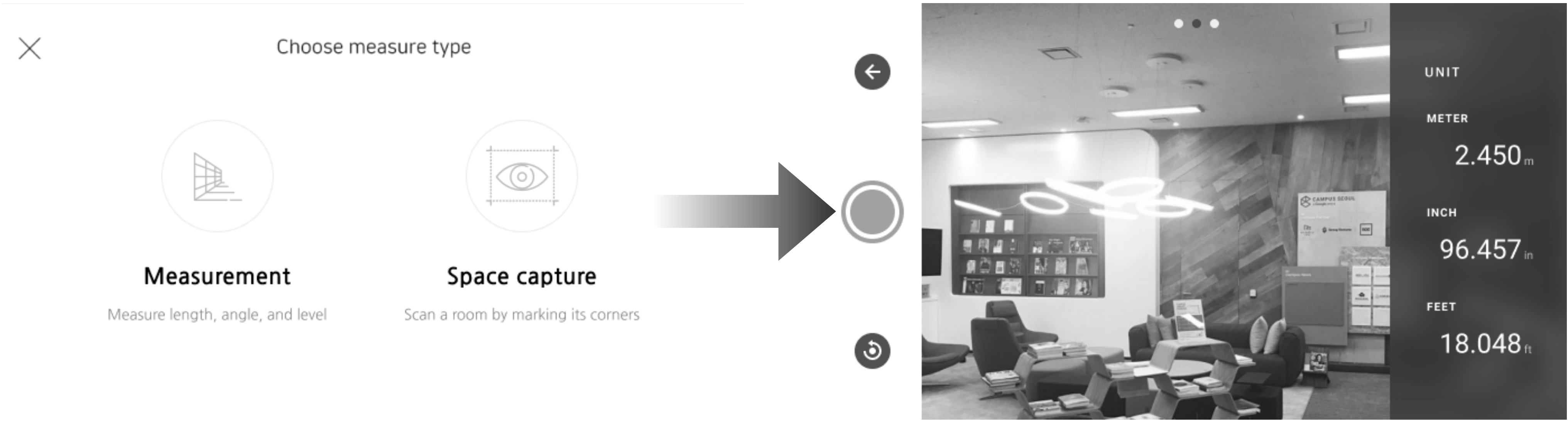
4-3. Interlock with smart phones : Error page

After clicking [**Connect Device**], following error page will appear according to connection status.



Status	Error page
When the product is turned off	NO DEVICE FOUND : Check device power and press “Retry”
When Bluetooth is off	BLUETOOTH IS OFF : Turn on Bluetooth then press ‘Retry’
When connection is poor	BLUETOOTH IS OFF : Turn on Bluetooth then press ‘Retry’

4-4. Measurement



- After checking the connection of the device, you can choose one of the four measurement modes

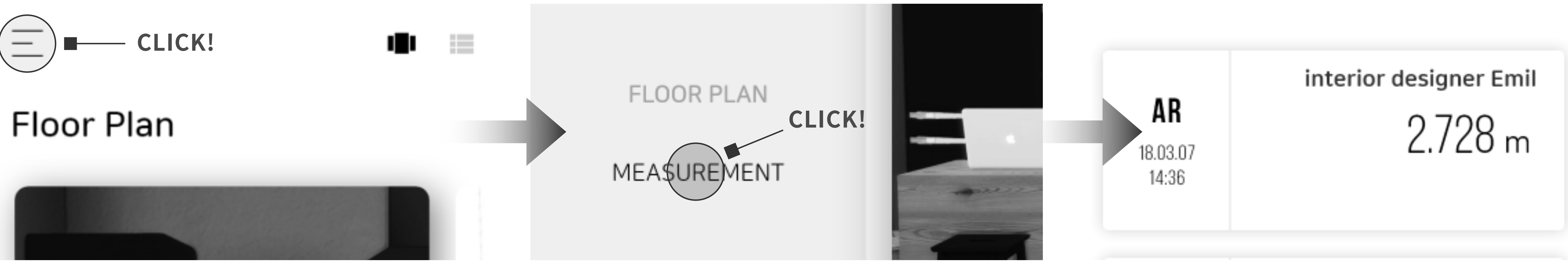
4-4-1. Measurement

Mode	Data storage	Description
Laser	Possible	Measures the distance between the face of the device and the laser point
AR	Possible	Measures the distance between two virtually marked points
Angle	Impossible	Measures the angle enveloped by three virtually marked points
Level	Impossible	Displays guiding lines emanating from two virtually marked points

4-4-2. Measurement: Space Capture

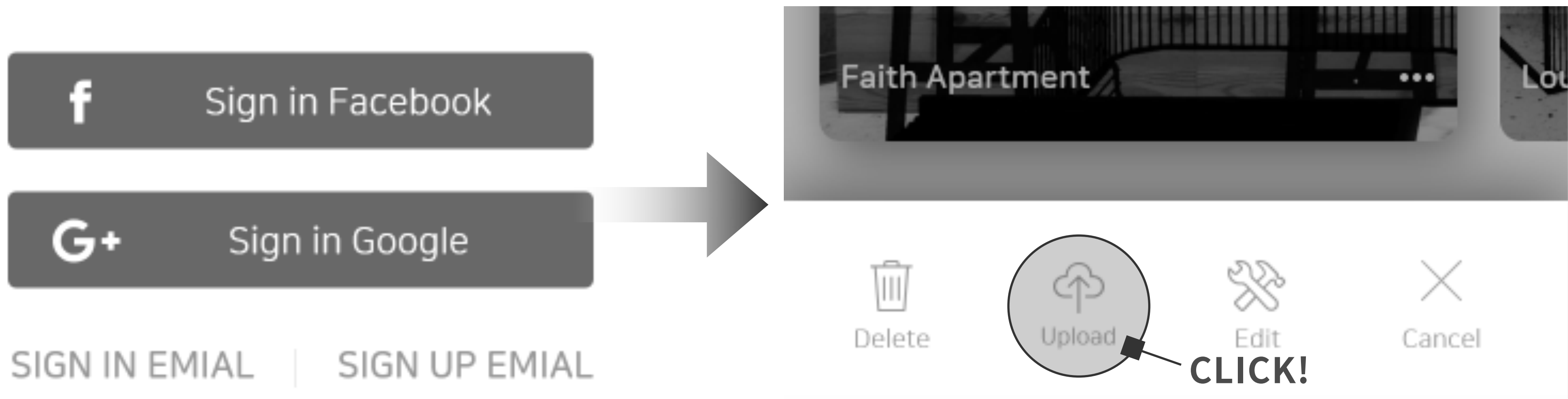
Mode	Data storage	Description
Space capture	Possible	Scans the shape and dimension of a space by virutally marking corners

4-5. How to check the measurement data



1. Click the [**list**] on the top of the landing page
2. Click either [**Floorplan**] or [**Measurement**] and check the measurement data of the list selected

4-6. How to upload the drawing data



- After login Application, click [**Upload**] button to move the drawing in the mobile to ARCHISKETCH website

*** Caution: Only the drawing contents can be uploaded. [Upload] function is available only after login**



ARCHISKETCH_
Handling and Safety instructions

Please make sure to read carefully and understand following cautions since they are for correct use of the product and safety of the user.
The supplier is not responsible for any accident occurring due to nonperformance of the cautions.

01- General handling and safety instructions

- Do not give a shock to or damage the product or battery. It may cause a failure.
- Use only genuine accessories such as battery certified in the national institute.
- Be careful not to contact the conductive material (metal, liquid, etc.) on the connection area of the charger or battery connection terminal.
- Stop using the product immediately when the product or component is damaged, and contact the customer center.
- Do not use the product with the battery exposed.

02- Cautions for damage and storage

- Be careful that a child or pet does not lick or bite the product.
- The product can be damaged or battery life can be shortened in the high temperature or low temperature environment.
- The product may malfunction in severe cold or hot season.
(Operating temperature: 0°C ~ 40°C, Storage temperature: -20°C ~ 35°C)
- Do not expose the product to heat or firearm.
- Do not use the product outdoor when it rains with thunders or lightning.
- Do not put the product near the maget or magnetic field. It may cause a failure.
- Avoid an environemnt where electrostatic occurs severely during use of the product. It may cause a malfunction.
- Do not put the product in the microwave.

03- Cautions for waterproof and dustproof

The product does not support the water proof or dustproof functions.

- Do not take a shower or swim having the product.
- Do not store the product in the moisture or humidity for long time.
- Handling the product with wet hand may cause a malfunction.

04- Warranty and Other Notes

- Please comply with the applicable laws and regulations or road safety regulations when using the product.
- Please dispose the product expired in accordance with the applicable local laws and regulations.

- Archisketch does not warrant the product in one of following cases:

- (a) The failiure caused by the reason other than the defect in material or technology
- (b) Surface defect including but not lomed to scratch, dent or broken plastic port etc.
- (c) Damage occurred due to the use of the product together with other manufacturer’s product
- (d) Damage ocurred due to external function such as accident, misuse or abuse, contact to liquid, fire, earthquake etc.
- (e) Damage occurred due to the operating the product with a method other than those specified in the guideline provided by Archisketch
- (f) The product which as latered in order to remodel the functions and performance (capacity) without prior written consent of Archisketch
- (g) Normal tear and wear or the product which expired its service life.
- (h) The product whose serial number is removed or damaged

* All transportation cost except for the first purchase shall be borne by the customer

Software Specification and Supporting Device

The product supports mobile phones smaller than **76 mm / 3 in (W)**.
More details are available at <https://developers.google.com/ar/discover/supported-devices>

※ The list of compatible mobile phones is up-to-date as of December, 2018.
The list is subject to change according to the device and software updates.

- Software specifictaion

Android ARCore	Android 7.0 or higher version
iOS ARCore	iOS 11.0 or higher version

- iOS Device Specification

iPhone	iPhone SE / 6S / 7 / 8 / X / Xr / Xs
--------	--------------------------------------

- Android Device Specifications

Asus	Zenfone ARES
Google	Pixel, Pixel XL, Pixel2, Pixel2 XL, Pixel3, Pixel3 XL
	Requires Android 8.0 or higher : Nexus 5X
HMD Global	Nokia 6 (2018), Nokia 6.1 Plus, Nokia 7 Plus, Nokia 7.1 / 7.1 Plus, Nokia 8 Sirocco
	Requires Android 8.0 or higher : Nokia 8
Huawei	Honor 8X, Honor 10, Honor View 10 Lite, Mate 20 Lite, Mate 20 Pro, nova 3, nova 3i, P20, P20 Pro Porsche Design Mate RS, Porsche Design Mate 20 RS

LG	G7 One, G7 ThinQ, Q6, V35 ThinQ, V40 ThinQ
	Requires Android 8.0 or higher : G6, V30, V30 ThinQ
Motorola	Moto G6, Moto G6 Plus
	Requires Android 8.0 or higher : Moto X4
OnePlus	OnePlus 5, OnePlus 5T, OnePlus 6, OnePlus6T
	Requires Android 8.0 or higher : OnePlus 3T
Samsung	Galaxy A5 (2017), Galaxy A6 (2018), Galaxy A8, Galaxy A8+ (2018), Galaxy J7 (2017), Galaxy J7 Pro Galaxy Note8, Galaxy S7, Galaxy S7 edge, Galaxy S8, Galaxy S8+, Galaxy S9, Galaxy S9+
Sony	Xperia XZ3
	Requires Android 8.0 or higher : Xperia XZ1, Xperia XZ1 Compact
	Requires Android 8.0 or later with software update after Aug 2018 (security patch level 2018-08-05 or later) : Xperia XZ2, Xperia XZ2 Compact
Vivo	X23
Xiaomi	Mi 8, Mi 8 SE, Mi Mix 2S, Mi Mix 3

Product Specification


- Measurement Specification

Measuring distance ⁽¹⁾	0.03-40m ⁽¹⁾
Accuracy ⁽²⁾	±1 mm (0.04 inch) ⁽²⁾
Display unit	meter/inch/feet
Measuring time	0.1~3초
Laser Class	Class II
Laser type	635nm, <1mW

(1) Beware of the actual position of the laser when targeting under intense sunlight or at highly reflective surface.
(2) The accuracy of measurements can decrease in poor environments such as intense sunlight, strong light source, and highly reflective surface.

※ The function, design, user manual and components of the product are subject to change in order to improve the quality of the product.

- Product Specifications

Company name or name	ARCHIDRAW 
Device name / Model name	Low Energe Wireless Device (Mobile Devices for Wireless Data Communication)/ Archisketch
Identification Code	
Manufacturer / Country	Archidraw / South Korea
Manufacturing Date	Separate description
Storage / Operating temperature	-20 ~ 35 °C / 0 ~ 40 °C
Battery	Lithium Polumer ion Battery
Rating Voltage	Charging voltage (5V) / Battery voltage (3.7V)
Size	100(L)x100(W)x30(H) mm
Weight	152g
Bluetooth	Support Bluetooth 4.0 (Link to Smart Phone)
A/S	archisketch@archisketch.com / www.archisketch.com

For a Class B digital device or peripheral, the instructions furnished the user shall include the following or similar statement, placed in a prominent location in the text of the manual:

NOTE: This equipment has been tested and found to comply with the limits for a Class B digital device, pursuant to part 15 of the FCC Rules. These limits are designed to provide reasonable protection against harmful interference in a residential installation. This equipment generates, uses and can radiate radio frequency energy and, if not installed and used in accordance with the instructions, may cause harmful interference to radio communications. However, there is no guarantee that interference will not occur in a particular installation. If this equipment does cause harmful interference to radio or television reception, which can be determined by turning the equipment off and on, the user is encouraged to try to correct the interference by one or more of the following measures:

- Reorient or relocate the receiving antenna.
- Increase the separation between the equipment and receiver.
- Connect the equipment into an outlet on a circuit different from that to which the receiver is connected.
- Consult the dealer or an experienced radio/TV technician for help.

This device complies with Part 15 of the FCC Rules.

Operation is subject to the following two conditions: (1) this device may not cause harmful interference, and (2) this device must accept any interference received, including interference that may cause undesired operation.

FCC CAUTION:

Any changes or modifications in construction of this device which are not expressly approved by the party responsible for compliance could void the user's authority to operate the equipment.

FCC NOTE:

The manufacturer is not responsible for any radio or TV interference caused by unauthorized modifications to this equipment. Such modifications could void the user's authority to operate the equipment.
