

## Wi-Fi Smart Plug Converter User Manual

### Product Schematic



### Technical paramters

Maximum current: 10A  
Rated voltage: 250V  
Rated power: 2500W  
Input voltage: 100~250V  
Working temperature: 0 °C - 40 °C  
Support system: Android/iOS  
Support third parties:  
Amazon Alexa, Google home, IFTTT.  
Wireless type: wi-fi 2.4ghz (802.11b/g/n)  
APP support operating system:  
Android 4.1 \ IOS 8.0 version and new

### Switch and indicator light instruction

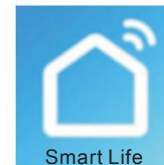
- Short press the switch button: Blue light means power on, without light means power off.
- Keep pressing the switch button for more than five seconds: Red light flashes fast, products become to the distribution network model;
- Abnormal network connection or offline status: Red lights flash slowly, please check the router or network configuration;
- After distribution network successfully, the blue light keeps on; If no output the blue light is off;
- Products in any condition to maintain after 10 seconds, power off then on, will automatically remember the last state of power, power restore the former state.
- Note: buttons are for pairing and output function, there will be pairing operation and trigger the output function when operating.

### Download and install the smart life APP

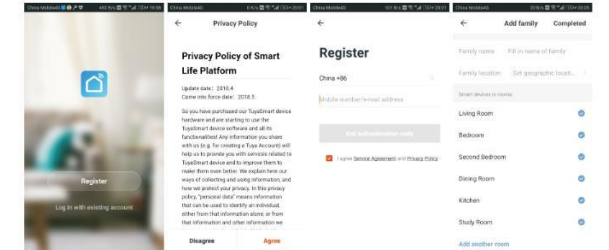
1. The smart life APP can be downloaded by scanning the qr code chart below.



2. After downloading and installing, connect the phone to the WIFI at home and click the APP icon on the phone.



3. Register a new account.

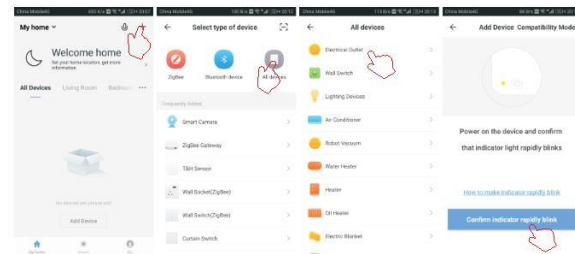


4. Keep pressing the switch button 5 seconds to enter the distribution model, and the red light flashes quickly.

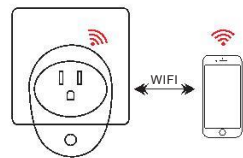


The device has been evaluated to meet general RF exposure requirement.  
The device can be used in portable exposure condition without restriction.

5. Add the wife plug as below.

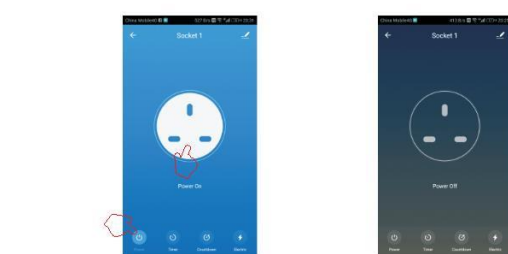


6. Enter the WIFI password to the mobile phone and click "ok" to enter the search device interface.



### Wifi plug App instruction

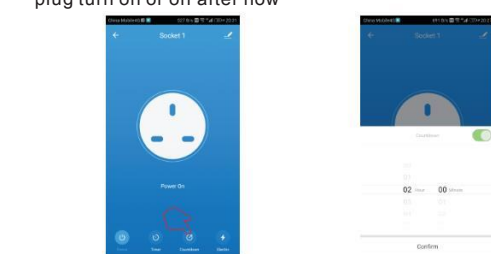
1. Power button can turn on or off the wife plug by phone



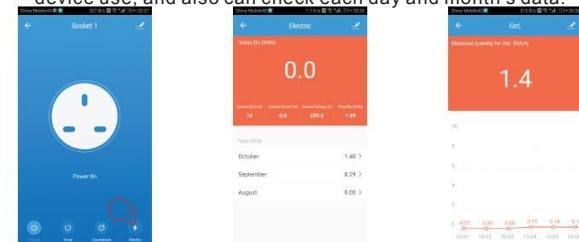
2. Timer button can add schedule that can turn on or off the wifi plug at any time you want.



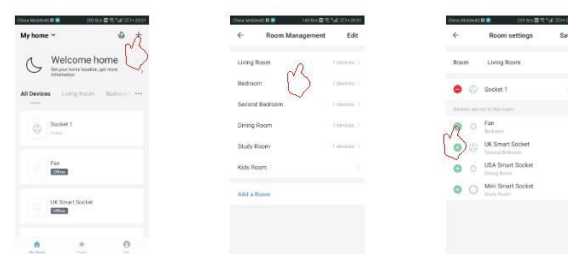
3. Countdown button can set how long you want the plug turn on or off after now



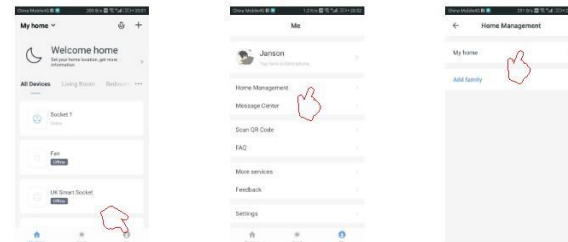
4. Electric button can let you know how many electric the device use, and also can check each day and month's data.



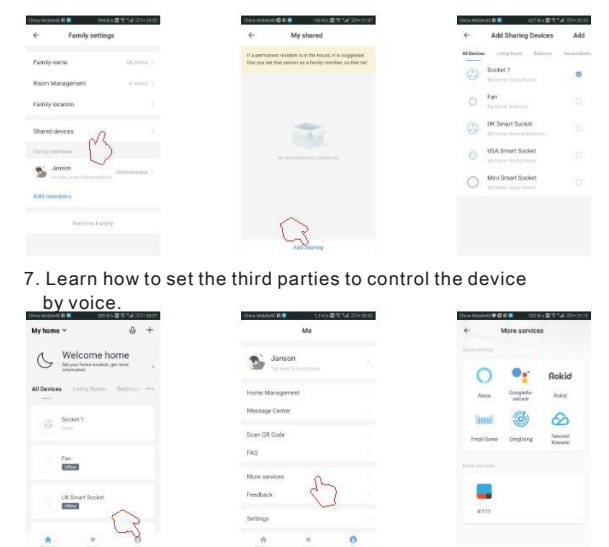
5. Assign plugs to each room as below.



6. Share the device to your family member as below.



7. Learn how to set the third parties to control the device by voice.



### **Federal Communication Commission Interference Statement**

This equipment has been tested and found to comply with the limits for a Class B digital device, pursuant to Part 15 of the FCC Rules. These limits are designed to provide reasonable protection against harmful interference in a residential installation. This equipment generates, uses and can radiate radio frequency energy and, if not installed and used in accordance with the instructions, may cause harmful interference to radio communications. However, there is no guarantee that interference will not occur in a particular installation. If this equipment does cause harmful interference to radio or television reception, which can be determined by turning the equipment off and on, the user is encouraged to try to correct the interference by one of the following measures:

- Reorient or relocate the receiving antenna.
- Increase the separation between the equipment and receiver.
- Connect the equipment into an outlet on a circuit different from that to which the receiver is connected.
- Consult the dealer or an experienced radio/TV technician for help.

### **FCC Caution:**

Any changes or modifications not expressly approved by the party responsible for compliance could void the user's authority to operate this equipment.

This device complies with Part 15 of the FCC Rules. Operation is subject to the following two conditions: (1) This device may not cause harmful interference, and (2) this device must accept any interference received, including interference that may cause undesired operation.

### **Radiation Exposure Statement**

This equipment complies with FCC radiation exposure limits set forth for an uncontrolled environment. This equipment should be installed and operated with minimum distance 20cm between the radiator and your body.

This transmitter must not be co-located or operating in conjunction with any other antenna or transmitter.