

# Ks Series

# Safety Instructions & Quick Reference

This Instruction describes how to use the machine and precautions for your safe use. Please read carefully and understand this instruction before operating the machine. Keep this Instruction handy for ready reference.

## LAUREL



1TA00R10000AA-C

### Safety Caution









This instruction is used to follow symbols to make you cautious in order to use the machine safely and to prevent you from a risk of an injury or from losing your property.

It describes contents of danger and/or how to prevent the danger together with marking which indicates contents of the danger near the symbols.

Please read through this instruction to understand the meanings of symbols and markings before use.

 <b>Warning</b>	In case the machine is wrongly operated without respect to this icon, there is a possibility of fatal or serious injury to the operator.
 <b>Caution</b>	In case the machine is wrongly operated without respect to this icon, there is a possibility of injury or material physical damage to the machine.

### Description of Symbol and Examples

	This mark requires all power plug be removed before taking necessary action.		This symbol warns of electric shock.
	This mark instructs you to connect earth wire to the proper grounding.		This symbol warns the operator to be cautious not to pinch a finger etc. In case of handling without care, there is a risk of injury.
	This mark indicates an action must be carried out.		
	This figure symbol indicates prohibited acts.		
	This symbol warns the operator not to disassemble the machine. There is a risk of danger.		
	This symbol warns possibility of fire and smoke.		

### Note

1. It is strictly prohibited to use part of this entire instruction to other publication without permission of the publisher.
2. The contents of this instruction and the specification of the machine may change without a preliminary notice for future improvement.
3. Please contact to the regional distributor of LAUREL, if there are any doubtful points, or errors, etc. in this instruction.
4. It is understood that LAUREL will not be responsible for any losses caused by use of the machine, or regardless of any errors in the instruction.
5. The illustrations in this instruction may differ from the actual machine as they are abstract.
6. The display screen illustrated in this instruction may differ from an actual display screen.
7. Please contact a regional distributor of LAUREL if the manual has disorderly binding or missing pages.
8. Please contact a regional distributor of LAUREL for loss or damage of the instruction.














### FCC Caution

Changes or modifications not expressly approved by the party responsible for compliance could void the user's authority to operate the equipment.

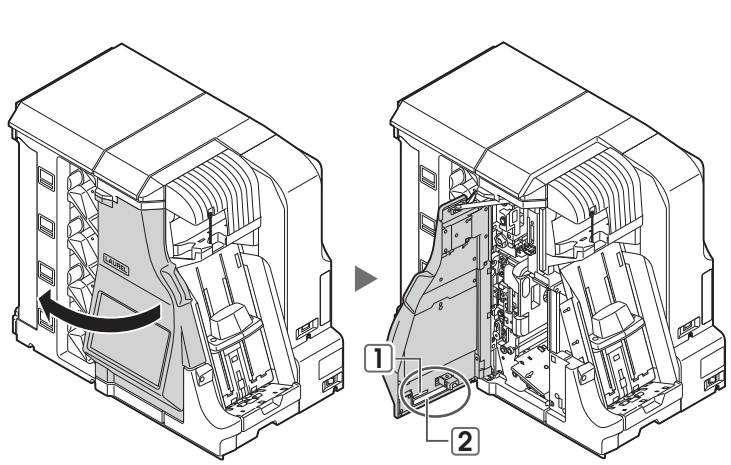
### FCC Notice

This machine has been tested and found to comply with the limits for a Class A digital device, pursuant to Part 15 of the FCC Rules. These limits are designed to provide reasonable protection against harmful interference when the equipment is operated in a commercial environment. This equipment generates, uses, and can radiate radio frequency energy, and if it is not installed and used in accordance with the instruction manual, may cause harmful interference to radio communications. Operation of this equipment in a residential area is likely to cause harmful interference in which case the operator will be required to correct the interference at operator's own expense.

### Safety Caution

 <b>Warning</b>	
	<b>If smoking, abnormal smell, noise is detected from the machine, stop the operation and pull out the plugs from outlet. Then contact a regional distributor of LAUREL. Without respect to this caution, there is risk of failure, an electric shock or a fire.</b>
	<b>If a liquid is spilled over the machine or metal, burnable material are dropped inside of the machine, do not use the machine. Pull out the plug from outlet and contact a regional distributor of LAUREL. Otherwise, there is a risk of an electric shock or a fire.</b>
	<b>Make sure to connect earth wire to the proper grounding. Otherwise, there is a risk of an electric shock.</b>
 <b>Caution</b>	
	<b>Do not install the machine at a moist area, dusty or any place for handling water. There is a risk of an electrical shocks and a fire.</b>
	<b>Do not use the Power Cable which is not for the machine. There is a risk of failure, an electric shock or a fire.</b>
	<b>The Power Cable enclosed in the box is exclusive for the machine. Use the cable for the machine. Otherwise there is a risk of failure, an electric shock or a fire.</b>
	<b>Make sure the machine has stopped completely before accessing inside the machine. Otherwise, there is a risk of an injury.</b>
	<b>Hold the specified part when opening and closing doors and be sure not to pinch your finger. Otherwise, there is a risk of an injury.</b>
	<b>This machine is not suitable for use in places where children may possibly be located.</b>
	<b>Do not disassemble the machine except having been instructed in the instruction. There is a risk of an electric shock and a fire.</b>
	<b>Although it is a heavy machine, it is installed on a table, so place it on a desk with sufficient strength so that it is not placed on an unstable place.</b>

### FCC Label in the Machine



**1**

**FCC ID: 2ARVCKS**

**2**

This device complies with part 15 of the FCC Rules. Operation is subject to the following two conditions: (1) This device may not cause harmful interference, and (2) this device must accept any interference received, including interference that may cause undesired operation.

### Safety Caution

#### Power Cable Notice

- Please use the power code which is enclosed with the machine or please use the one with the below mentioned specifications.
- Rated voltage above the power supply voltage used.
  - Rated current that is higher than the rated current of the machine described in the manufacturing nameplate.
  - Supports safety certification required in the country of use.
  - The shape of the connector connected to the machine conforms to "IEC-60320-C13".
  - To prevent the Power Cable from bending or putting a burden on the Power Cable connection, please use a Power Cable whose connection shape matches the installation location.

If any other than the above is used, smoke, fire, electric shock, machine failure may occur, and the authorities may give guidance.

### Request from Us

- If you do not use the machine for long time, Please be sure to turn off the Power Switch.
- When turning on and off the Power Switch, Please take a time interval of 5 seconds or more.**
- Handle the machine with care.
- Do not strike or shake the machine.
  - Close all doors before start operation.
  - Press the keys or switches gently.

### About the Installation of the Machine

Please avoid high temperature, high humidity, dust, vibration, and direct sunlight. In case the environment of operation exceeds room temperature (5°C to 35°C) and humidity (35% to 80%), the performance of the machine will deteriorate remarkably.

Please use an air-conditioner, a humidifier, etc. in case of above conditions.

### About Dew Condensation

In case the machine is installed to places where are high humidity or move from the place is cold to warm, may cause to the dew condensation.

In case the dew condensation, please leave the machine for hours at the place where you use, and turn on the Power Switch after that.

### Installation, Transfer

In order to have correct function of the machine, it is necessary to have appropriate adjustment for Installation and Transfer.

Do not remove the Ferrite Core.

The optional Customer Display must be connected using the attached cable.

When you install or transfer this machine, please contact a regional distributor of LAUREL.

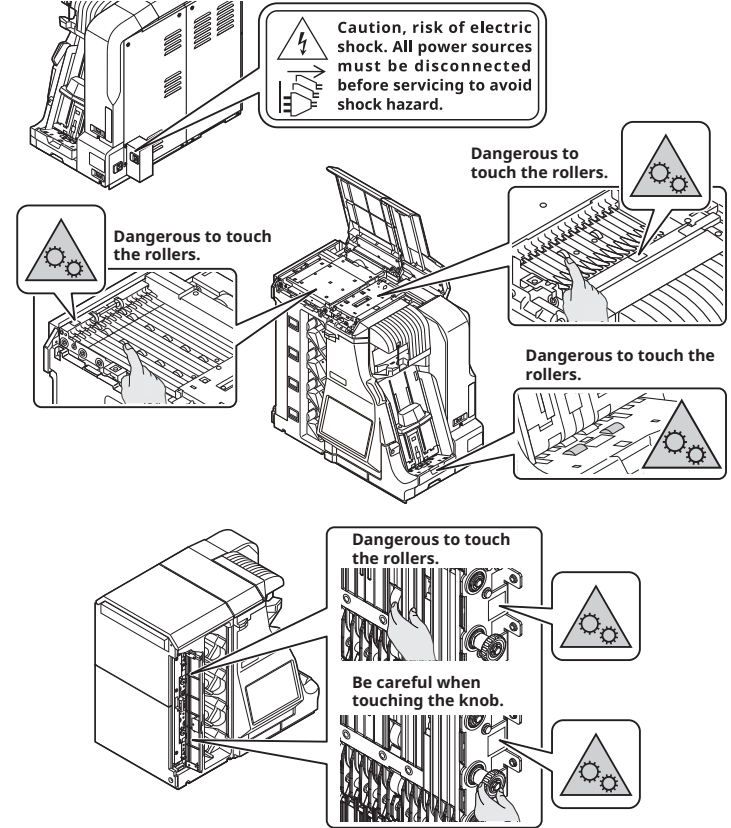
### Handle the Machine with Care Children

**Since this machine is the business and the industrial device, it is not suitable to be used in places where children may possibly be located.**

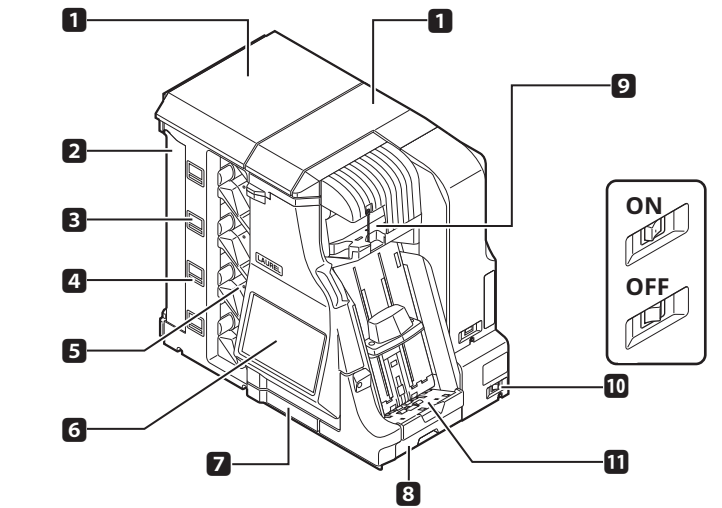
### Caution Mark in the Machine

The safety caution labels are attached to the place which is hazardous area in the machine. These labels remind an operator conscious of the danger while operating the machine.

If the caution label is unreadable, peeling off and/or stain, please contact a regional distributor of LAUREL.



Name of Each Part



- 1

Upper Cover
- 2

Sub-Front Cover
- 3

Sub-Display
- 4

Status LED
- 5

Pocket
- 6

Main-Display
- 7

Dust Tray1
- 8

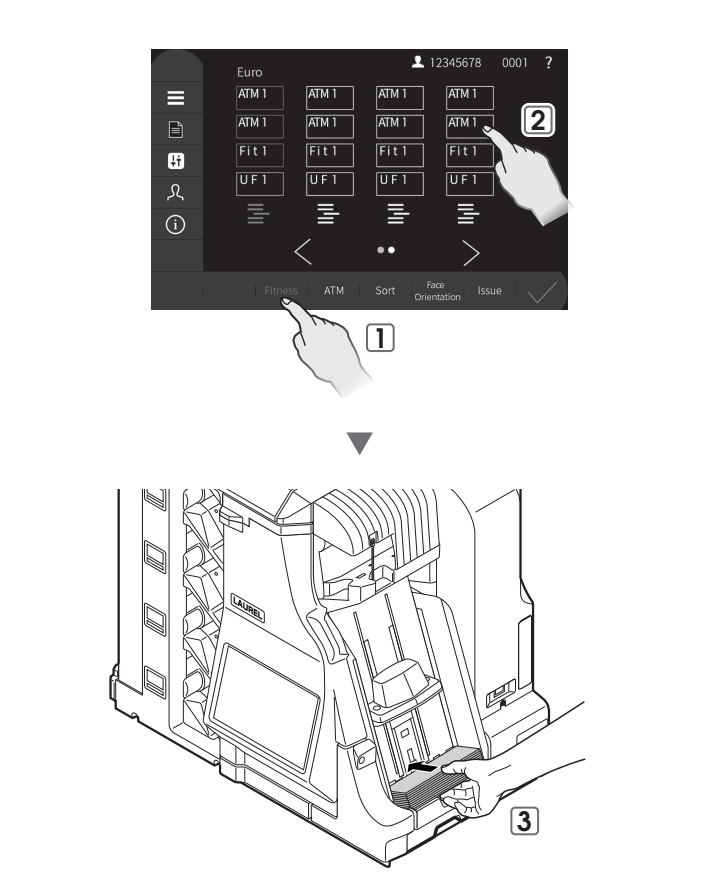
Dust Tray2
- 9

Reject Pocket
- 10

Power Switch
- 11

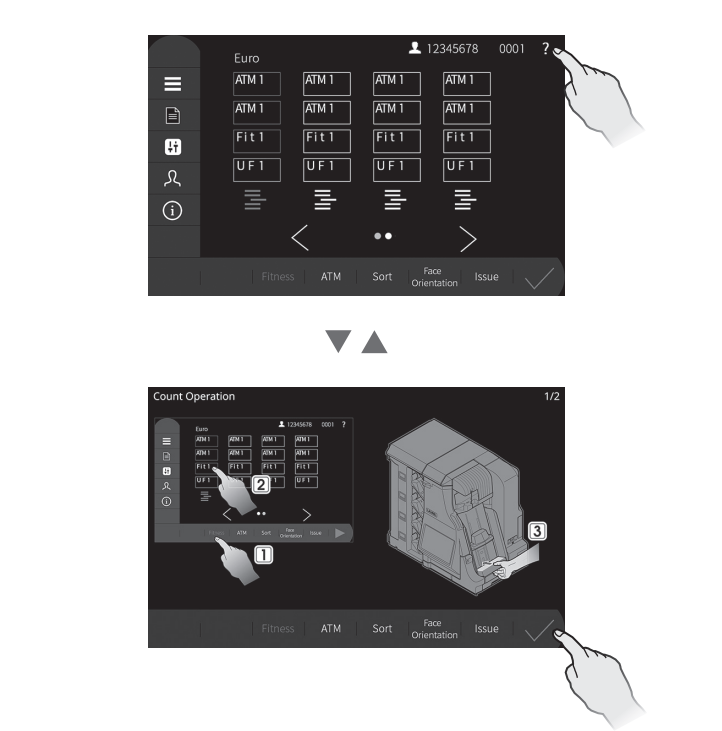
Hopper

Quick Instruction



Guide Function

Touch "?" to display the operation description.



Description of Sort Mode

- Fitness Mode**

Sorting out Fit notes and Unfit notes. In case the banknotes are mixed, the 1st counted Note will be the target for sorting.
- ATM Mode**

Sorting out ATM notes. In case the banknotes are mixed, the 1st counted denomination will be the target for sorting.
- Sort Mode**

Sorting out denomination.
- Face/Orient Mode**

Sorting out banknotes based on Facing and Orientation. In case the banknotes are mixed, the 1st counted denomination will be the target for sorting.
- Issue Mode**

Sorting out New and Old banknotes based on issue.  
In case the banknotes are mixed, the 1st counted denomination will be the target for sorting.

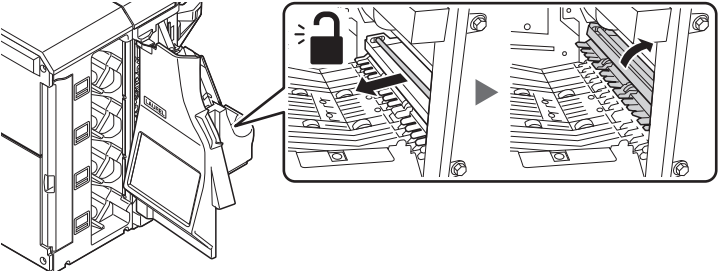
Description of Status LED

LED indicates notes category by color of lights.

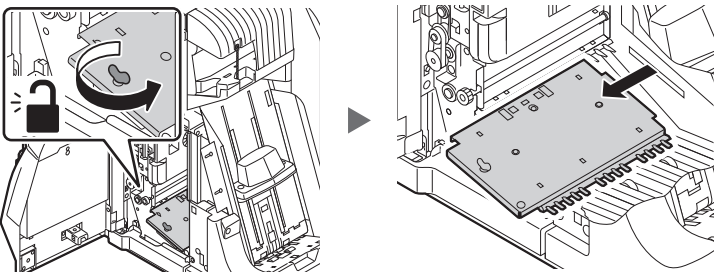
Status LED Sort Mode	Blue	Green	Orange	Red
<b>Fitness</b>	Fit notes	—	Unfit notes	Suspect notes
<b>ATM</b>	ATM notes	Circulated notes	Unfit notes	Suspect notes
<b>Sort</b>	Single Denomination	Mixed Denomination	—	Suspect notes
<b>Face/Orient</b>	Genuine notes	—	—	Suspect notes
<b>Issue</b>	New notes	Old notes	Before 2Generations	Suspect notes

How to Open the Guides and Validator

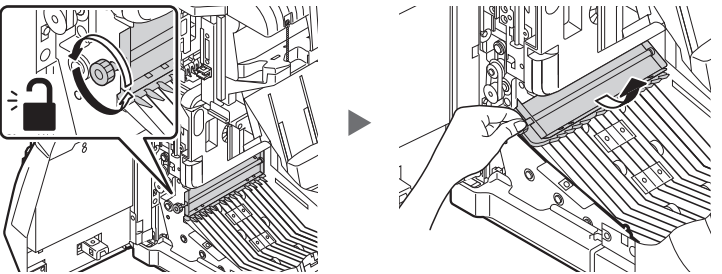
Guide 1



Guide 2

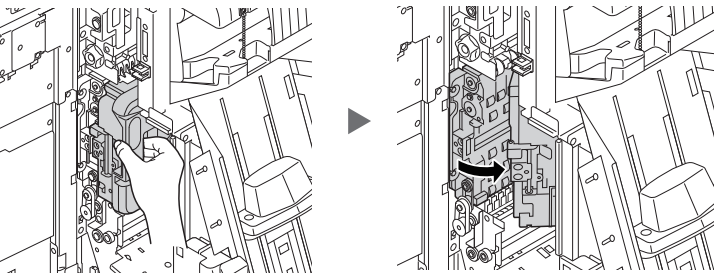


Guide 3

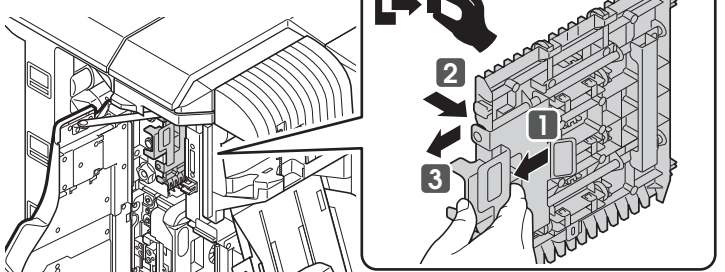


How to Open the Guides and Validator

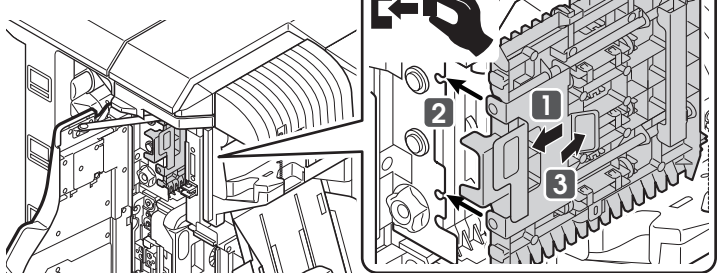
Validator



Guide 4

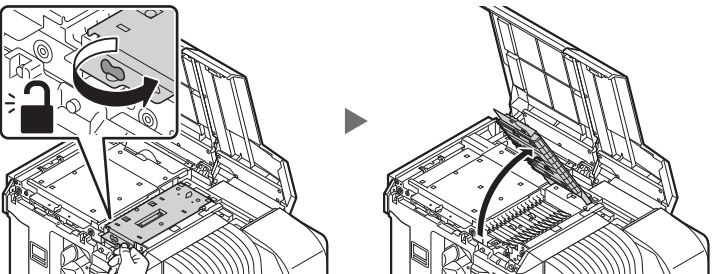


Guide 4

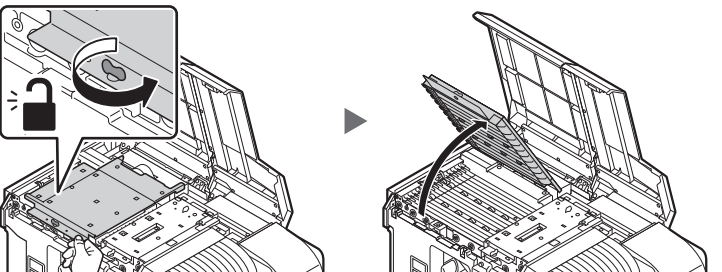


How to Open the Guides and Validator

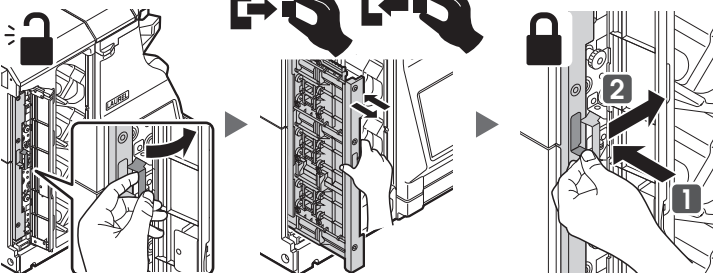
Guide 5



Guide 6



Guide 7



Space for the Installation, Space for the Operation

