

MAINTENANCE

■ Underwater Usage Notes

This camera are splash, water, and dust resistant and were tested under controlled laboratory conditions with a rating of IP68 under IEC standard 60529 (maximum depth of 20 meters up to 30 minutes). Splash, water, and dust resistance are not permanent conditions and resistance might decrease as a result of normal wear.

■ The waterproof conditions for IP68 :

- Clear water at normal temperature, tested at a depth of 20 meters.
- The testing time is 30 minutes.
- The temperature difference between the water temperature and the product shall not exceed 5 degrees Celsius.

In order to ensure the waterproof performance of the camera, please carefully refer to the operation and maintenance precautions as following. The machine is not waterproof due to improper operation and improper maintenance, which is not covered by the warranty.

- ❖ Make sure to check whether the silicone pads on the waterproof cover and TYPE-C Port waterproof silicone plug is clean before using underwater. Otherwise it will affect the camera's waterproof ability, and a single hair or sand will cause leakage!
- ❖ Be sure to check whether the waterproof silicone pad on the battery door and the waterproof silicone plug on the Type-C Port are damaged/hardened/cracked. Damaged/hardened/cracked silicone pads/plugs can cause water leakage, so be sure to replace them in time!
- ❖ Please cover the battery door in the correct direction and check that the lock on the battery cover is fully and tightly fastened to the body before using underwater. Please make sure that the waterproof silicone pad on the battery cover is completely attached to the body. Otherwise, the camera will not be waterproof.
- ❖ Please press the waterproof silicone plug on the Type-C Port firmly to ensure that the waterproof silicone plug on the Type-C Port is fully and tightly attached to the body before using underwater . Otherwise, the camera will not be waterproof.
- ❖ Avoid jumping into water a high speed with camera. Otherwise, the impact may result in water water leakage.
- ❖ DO NOT use the camera in a hot spring or expose the product directly to high temperatures over 40°C. High temperature may cause deformation of the waterproof seal on the camera body and lose its waterproof function.
- ❖ Keep it safe from falling and dropping. Falling and drop will cause damage to the

watertight seal on the camera body and the camera is not waterproof.

- ❖ The microphone and speaker's hole on the camera has built in waterproof material. DO NOT remove the waterproof material or poke the holes. Otherwise, the camera will no longer be waterproof.
- ❖ Due to the presence of a large amount of microorganisms and salts in seawater, it is important to clean the camera with clean water after use to prevent seawater microorganisms from adhering to the camera surface or metal parts for a long time, which can cause the camera to decay, rust, etc., and cause the camera's waterproof function to fail.
- ❖ Clean the camera with clean water after using underwater. Allow it to dry naturally before using again.
- ❖ When using in humid and low-temperature environments, please ensure that the inside of the camera is sufficiently dry and take measures to defog to prevent the lens from fogging and unable to take photos.
- ❖ This camera is not waterproof unless the battery cover are closed.

CAUTIONS

- This is a Ultra HD action camera, It is normal for the housing to exert heat under use.
- Don' t expose the product directly to high temperatures over 45°C.
- Please properly protect well the lens and screen of camera after using.
- Keep it safe from falling and dropping.
- Keep it distance from any strong magnetic interference objects like electrical machine to avoid strong radio waves that might be damaging the product and affect the sound or image quality.
- In case of overheating, unwanted smoke from the device, unplug it immediately from the power outlet to prevent hazardous fire.
- Keep it safety from children while on charging.
- Stored the device in a cool, dry and dust free location.
- Do not modify the camera it in any way,if the camera has been detached,the warranty will be void.

OVERVIEW OF CAMERA

The camera is an all-weather action camera, equipped with 6-axis gyroscope EIS technology, which can take clear 20MP photos and capture stable videos at 4k/60fps. This camera adopting watertight seal and a hydrophobic coating on the camera body, which can reach IP68 waterproof level. This action camera is weatherproof and distinct to unlock

all the filming scenarios and ease your vlogging experience. Its IPX8 water-resistant design can protect the action camera from rain, snow and water splashing.



- | | |
|--------------------------------|---|
| 1. Lens | 6. TYPE-C Port waterproof silicone plug |
| 2. Speaker | 7. Indicator |
| 3. Internal Microphone | 8. Waterproof Battery Door |
| 4. Power/Shutter/Select Button | 9. Battery Door Lock |
| 5. Touch Screen | |

■ Button Operation Instructions

- ① Press and hold for 3 seconds to turn on/off camera;
- ② In Video mode, short press to start/stop recording video;
- ③ In photo mode, short press to take photos;
- ④ In the setting and playback mode, short press to select the desired option;
- ⑤ In video playback mode, short press to pause/play the video.

GETTING STARTED

Welcome to your new camera. To capture video and photos, you need a micro SD card.

■ STORAGE/MICRO CARDS

We strongly recommend to use the branded memory cards purchased from regular channels for maximum reliability and stability during recording and in high vibration activities.

- **UHS-III rating at least for 4K Video resolution**
at least 60MB/S or above read and writing speed
- Capacity up to 128GB (FAT32)

The bigger memory may have an effect on the compatibility with the camera.

Notes:

- ❖ Please format the memory card on the camera before using.
- ❖ Please insert the memory card in correct way. if not , the card slot maybe damage by the wrong way.
- ❖ To keep your micro SD card in good condition, reformat it on a regular basis.
- ❖ Reformatting erases all content, so be sure to offload your photos and videos first.
- ❖ Don' t place Micro SD card near strong magnetic objects to avoid data error or loss.
- ❖ FAT32 format memory card stops recording when the storage of each file is over 4GB and starts to record again on a new file.

■ **POWERING ON+ OFF**

● **To Power On:**

Press and hold the Power button for seconds. The camera beeps while the camera status light is on. When information appears on the screen, your camera is on.

● **To Power Off:**

Press and hold the Power button again for seconds. The camera beeps while the camera status light is off. When information disappears on the screen, your camera is off.

OVERVIEW OF MODES

There are 5 modes: video mode, photo mode, shortcut mode, playback mode and settings mode.

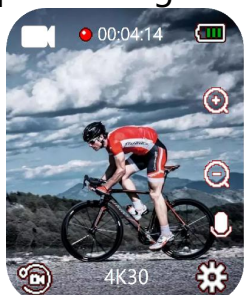
■ **Video Mode**

5 video modes: Video Mode, Time Lapse Video Mode, Slow Motion Mode, Fast Motion Mode and Vertical Video.

● **Video Mode**

Video mode is the regular video mode, video mode is the default mode when you turn on the camera. Video is recorded in a 16:9 image ratio.

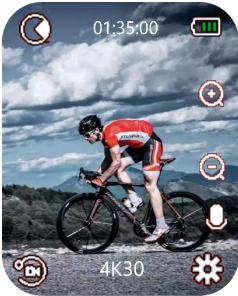
In Video Mode,press Shutter button to start recording video,press Shutter button again to stop recording video.



● **Time Lapse Video Mode**

Time Lapse Video abbreviated as Video Lapse, Video Lapse creates video from frames captured at specific intervals. This option lets you capture a time lapse event and immediately view or share it as a video.

In Time Lapse Video Mode, press the Shutter button, the camera will take a series of videos at the set interval.

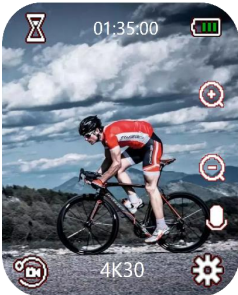


Tip: Audio cannot be recorded in Time Lapse Video Mode.

● **Slow Motion Mode**

Slow Motion Video, also known as high-frame-rate video, refers to a technique where the camera records video at a higher frame rate and then plays it back at a lower speed, typically 30 frames per second, resulting in a smoother and more dramatic effect.

In this mode, press the shutter button and the camera will record slow motion videos at 720P 4X.



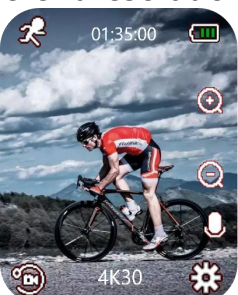
Tips:

- ✧ Audio cannot be recorded in Slow Motion Mode.
- ✧ If Slow Motion is on, EIS, Time-Lapse Video and Fast Motion will not be available.

● **Fast Motion Mode**

A technical effect that makes image movement faster than normal speed.

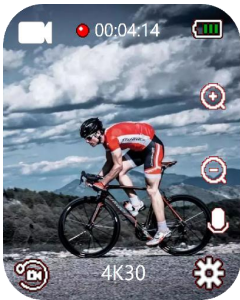
In this mode, pressing the shutter button allows the camera to record fast action videos at different resolutions and speeds.



Tip: If Fast Motion is on, EIS, Time-Lapse Video and Slow Motion will not be available.

- **Vertical Video**

Vertical Video that means to record video in a 9:16 image ratio. In this mode, press Shutter button to start recording video, press Shutter button again to stop recording video.



- **Photo Mode**

3 photo modes: Photo Mode, Time Lapse Photo Mode and Burst Photo Mode.

- **Photo Mode**

In Photo Mode, press Shutter button, the camera takes a photo per time.



- **Time Lapse Photo Mode**

Time Lapse Photo captures a series of photos at specified intervals.

In this mode, press the Shutter button to take a series of photos at the set interval.



- **Burst Photo Mode**

Burst captures up to 10 photos per time, so it is perfect for capturing fast-moving activities. In this mode, press Shutter button, the camera will continuously capture 3, 5, or 10 photos.



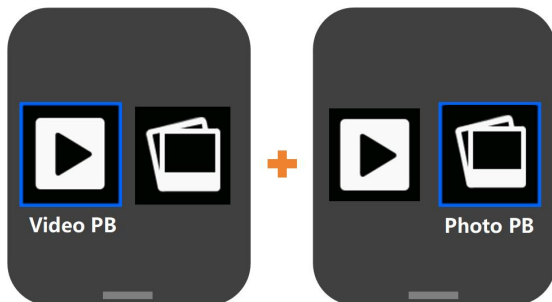
■ Shortcut Mode

The shortcut mode can quickly turn on/off the camera's WiFi and audio recording functions, as well as quickly turn off the camera. In this mode, tap on the desired icons on the screen to quickly perform related function.



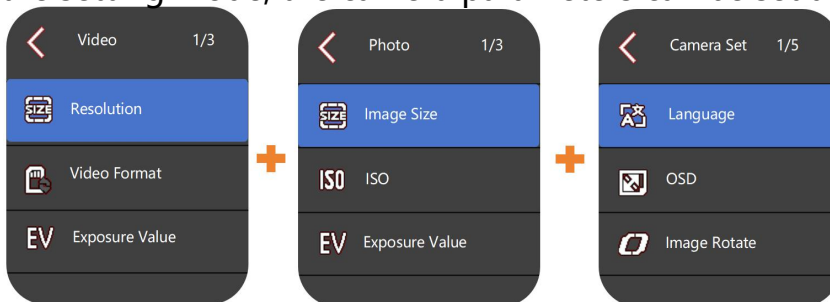
■ Playback Mode

There are 2 Playback Mode: Video Playback Mode and Photo Playback Mode. In Playback Mode, You can playback or delete your content on the camera.



■ Settings Mode.

There are three settings modes: video settings, photo settings, and camera settings. In the setting mode, the camera parameters can be set according to the shooting needs.



MODE SWITCHING

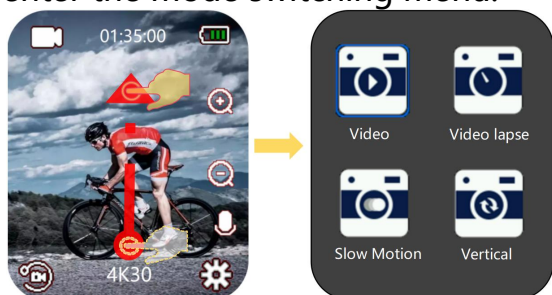
■ Quickly switch shooting modes

The mode switching menu includes 5 video modes+3 photo modes:

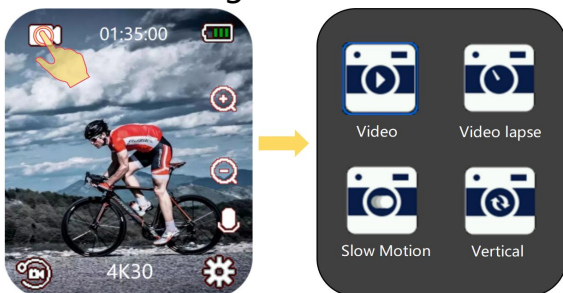
5 video modes: Video, Video Lapse, Slow Motion, Fast motion and Vertical.

3 photo modes: Photo, Photo Lapse and Burst.

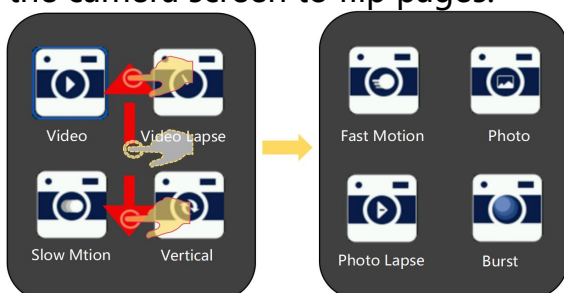
- In any video/photo mode, swipe quickly from bottom to top on the camera screen to enter the mode switching menu.



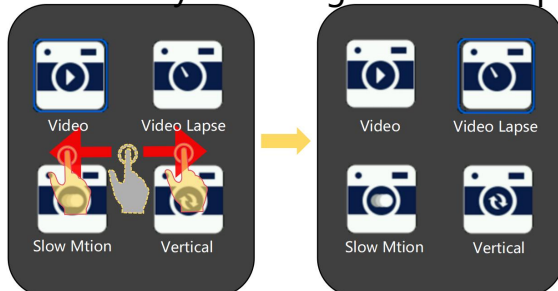
- Tap on the "Mode" icon in the upper left corner of the camera screen to enter the mode switching menu interface.



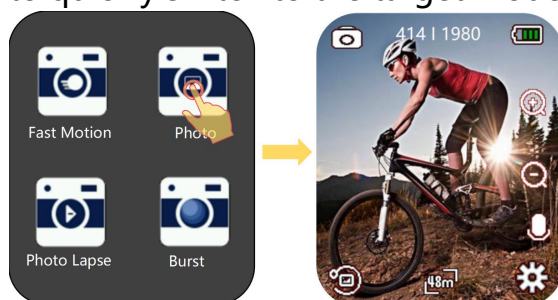
- In the mode switching menu, quickly swipe from bottom to top or top to bottom on the camera screen to flip pages.



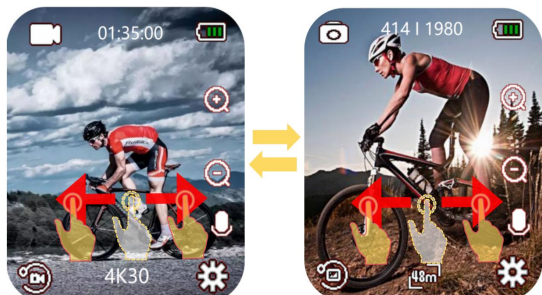
- In the mode switching menu, quickly swipe left to right or right to left on the camera screen to cycle through different options.



- In the mode switching menu, tap on the icon of the target mode on the camera screen to quickly switch to the target mode.



- In any video/photo mode, quickly swipe from right to left or left to right on the screen to switch between the selected video mode and photo mode.



- In any video/photo mode, quickly zoom in or out icons on the screen to achieve up to 8x digital zoom shooting.



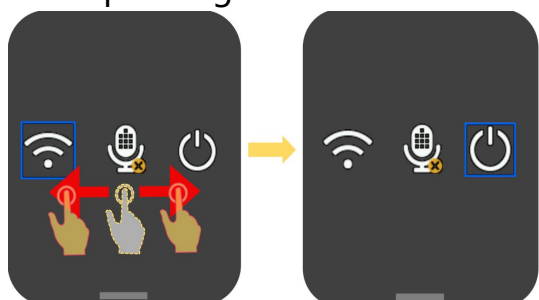
Tip: The zoom function cannot be used during the video recording.

■ Quickly switch to shortcut mode

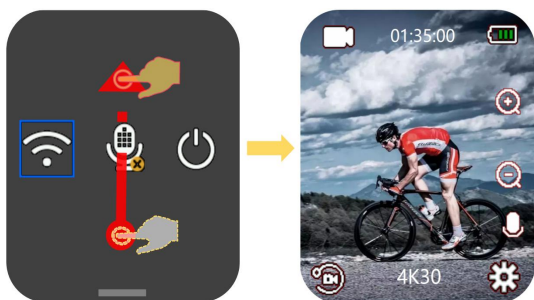
- In any video/photo mode, swipe quickly from top to bottom on the camera screen to enter the shortcut mode menu.



- In the shortcut mode menu, swipe left to right or right to left on the camera screen to cycle through different options, and then tap on the target icon to execute the corresponding function.

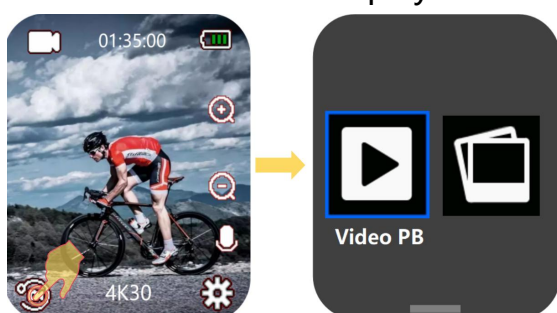


- Exit shortcut mode: Swipe quickly from bottom to top on the camera screen.

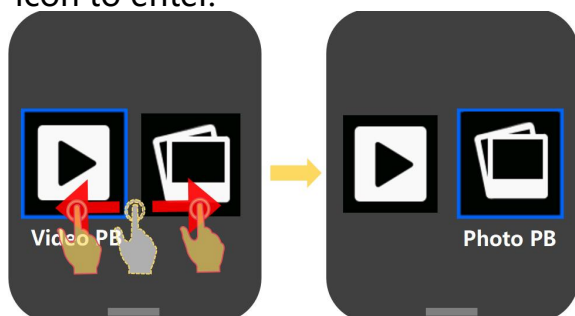


■ Quickly switch to playback mode

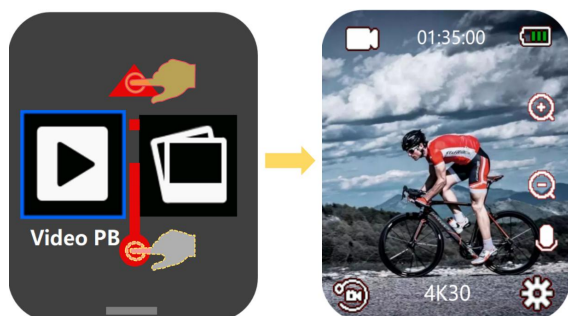
- In any video/photo mode, tap on the "playback" icon in the bottom left corner of the camera screen to enter playback mode.



- In playback mode, you can switch between video playback mode and photo playback mode by swipe right or left on the camera screen. tap on the target playback mode icon to enter.



- Exit playback mode: Swipe quickly from bottom to top on the camera screen.



■ Quickly switch to camera setting

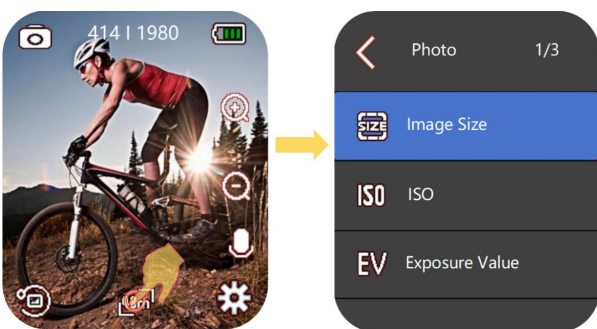
- **Video setting**

Verified in desired video mode, tap on the "Resolution" icon at the bottom of the camera screen to enter the settings for target video mode.



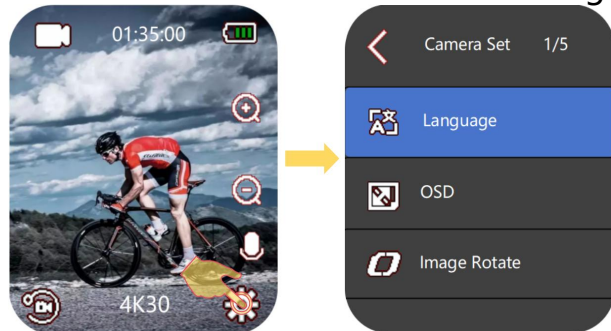
● Photo setting

Verified in desired photo mode, tap on the "Image size" icon at the bottom of the camera screen to enter the settings for target photo mode.



● Camera setting

In any video/photo mode, tap on the "Settings" icon in the bottom right corner of the camera screen to enter the camera setting.

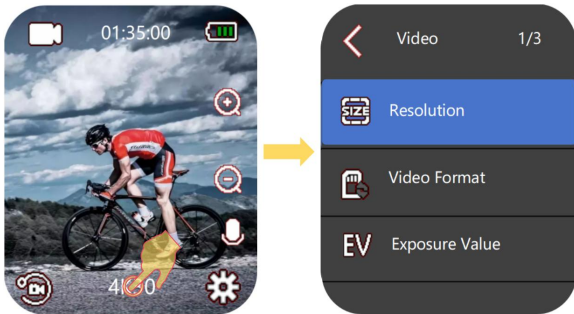


CUSTOMIZING YOUR CAMERA

There are 3 Setting Mode: Video Setting Mode, Photo Setting Mode and Camera Setting Mode.

◆ Video Setting Mode

1. Verified in Video/Video Lapse/Slow Motion/Fast motion/Vertical Mode, tap on "Resolution" icon to enter Video/Video Lapse/Slow Motion/Fast motion/Vertical Mode. For example, when the camera is in the "Time Lapse Video" mode, tap on the "Resolution" icon at the bottom of the camera screen to enter the "Time Lapse Video" settings menu.
2. Quickly slide up/down on the screen to cycle through various options, tap on the target option or press the "Shutter Key" to select the desired option to set.
3. Tap the "Back" icon in the upper left corner of the screen to exit the settings.



■ Video Settings:

- **Resolution: 4K30、4K60、2K30、1080P30、1080P60、720P60、720P120**

Default setting is **4K 30fps**.

Notes:

- ✧ This camera is capable of recording 4K30fps or above Video, with higher resolution offering greater clarity and detail due to the increased number of pixels. However, higher resolution video also results in larger file sizes.
- ✧ When capturing video at high resolution or high frame rates such as 4K 60/30fps, the camera may become hot and consume more power, which is normal.
- ✧ FAT32 format Micro SD card stops recording when the storage of each file is over 4GB and starts to record again on a new file

- **Video Format: MOV / MP4**

Default setting is **MP4**.

- **Exposure(EV): -2.0、-1.0、+0.0、+1.0、+2.0**

Default setting is **+0.0**.

By default, your camera uses the entire image to determine the appropriate exposure level. However, EV lets you select an area that you want the camera to prioritize when determining exposure. This setting is particularly useful in shots where an important region might otherwise be over- or underexposed.

When you change this setting, the LCD display immediately shows you the effect on your

image. If you change modes, the camera returns to using the entire scene to determine the correct level of exposure.

Notes:

- ✧ It is recommended to adjust the EV value higher in the low light scenes such as indoor/night/tunnel/underground parking lot to obtain better low light video effect.
- ✧ To avoid overexposure, it is recommended to lower the EV value in high light areas such as beaches and snow to achieve better video effects.

● **Stabilization (EIS): Off / On**

Default setting is **Off**.

This camera is equipped EIS function with 6-axis gyroscope to detect motion changes. When the camera tilts, moves, shakes, the sensor use image cross-border compensation algorithm to compensate the change and produce stable videos, especially in activities with relatively small angle (about 6 degrees)but fast motion including cycling, motorcycling, and hand-held uses.

Notes:

- EIS does not support 720P 120fps video resolution.
- If you turn on EIS, Slow Motion and LDC will not be available automatically.

● **Loop Recording : Off / 1Min / 3Min / 5Min**

Default setting is **Off**.

The files will be saved every 3 minutes if you choose 3 minutes. When the memory card is full, the new files will cover the existed one if the loop recording is on; If it is off, the camera won't record any more when the card is full, need to format the memory card or change a new one.

Notes:

- ✧ FAT32 format Micro SD card stops recording when the storage of each file is over 4GB and starts to record again on a new file. You cannot set 5min video file length when camera is at 4K 60fps.
- ✧ If you turn on Loop Video, Time Lapse Video, Time Lapse Duration and Slow Motion will not be available.

● **Video PreRec : Off / On**

Default setting is **Off**.

After enabling prerecord, the camera can start recording videos from a few seconds before pressing the shutter button. The prerecord function is very suitable for recording exciting moments of unexpected activities, such as fishing, etc

- **Car Mode: On / Off**

Default setting is **Off**.

If you turn on car mode and connect camera with car charger, the camera will turn on automatically and start recording if you turn off your car's engine. and the camera will turn off and stop recording if you Turn off the car's engine.

Notes:

- ✧ Must use 5V 1-2A output car charger.
- ✧ Using as a dash cam, we suggest to turn on the Loop Recording, Driving Mode, Upside Down and Screen Saver at same time.

- **Date Stamp: Off / Date / Date & Time**

Default setting is **Date & Time**.

If you turn on Stamp, this camera adds stamp to the video you take.

If you turn off Stamp, this camera will not add stamp to the video you take.

Note:

- ✧ This camera does not add date stamp to the videos you take if you record time lapse video or image stabilization is on.

■ **Video Lapse Settings:**

- **Resolution: 4K30、4K60、2K30、1080P30、1080P60、720P60、720P120**

Default setting is **4K 30fps**.

Notes:

- ✧ This camera is capable of recording 4K30fps or above Video, with higher resolution offering greater clarity and detail due to the increased number of pixels. However, higher resolution video also results in larger file sizes.
- ✧ When capturing video at high resolution or high frame rates such as 4K 60/30fps, the camera may become hot and consume more power, which is normal.
- ✧ FAT32 format Micro SD card stops recording when the storage of each file is over 4GB and starts to record again on a new file

- **Time Lapse Video: 1Sec / 3Sec / 5Sec / 10Sec / 30Sec / 1Min**

Default setting is **5Sec**.

Time Lapse Video creates video from frames captured at specific intervals. This option lets you capture a time lapse event and immediately view or share it as a video.

Select 3 seconds means recording 3 seconds to get one frame per second.

For example: If you select 4K/30FPS and 3 secs, you need to record 90secs, then you can get 1 sec video for 4K/30FPS.

Notes:

- ✧ Time Lapse Video is captured without audio.
- ✧ If you select Time-Lapse Video, EIS, Loop Video, Slow Motion and Fast Motion will not be available.

- **Interval Record Time: Unlimited / 5min / 10min / 15min / 20min / 30min / 60min**

Default setting is **Unlimited**.

Continuously creates Time Lapse Video at specific duration.

- **Exposure(EV): -2.0、 -1.0、 +0.0、 +1.0、 +2.0**

Default setting is **+0.0**.

By default, your camera uses the entire image to determine the appropriate exposure level. However, EV lets you select an area that you want the camera to prioritize when determining exposure. This setting is particularly useful in shots where an important region might otherwise be over- or underexposed.

When you change this setting, the LCD display immediately shows you the effect on your image. If you change modes, the camera returns to using the entire scene to determine the correct level of exposure.

Notes:

- ✧ It is recommended to adjust the EV value higher in the low light scenes such as indoor/night/tunnel/underground parking lot to obtain better low light video effect.
- ✧ To avoid overexposure, it is recommended to lower the EV value in high light areas such as beaches and snow to achieve better video effects.

- **Date Stamp: Off / Date / Date & Time**

Default setting is **Date & Time**.

If you turn on Stamp, this camera adds stamp to the video you take.

If you turn off Stamp, this camera will not add stamp to the video you take.

Note:

- ✧ This camera does not add date stamp to the videos you take if you record time lapse video or image stabilization is on.

■ Slow Motion Settings:

- **Resolution: Off / 720P 4X**

Default setting is **720P 4X**.

Slow Motion Video, also known as high-frame-rate video, refers to a technique where the camera records video at a higher frame rate and then plays it back at a lower speed,

typically 30 frames per second, resulting in a smoother and more dramatic effect.

Note:

✧ If Slow Motion is on, EIS, Time-Lapse Video and Fast Motion will not be available.

- **Exposure(EV): -2.0、 -1.0、 +0.0、 +1.0、 +2.0**

Default setting is **+0.0**.

By default, your camera uses the entire image to determine the appropriate exposure level. However, EV lets you select an area that you want the camera to prioritize when determining exposure. This setting is particularly useful in shots where an important region might otherwise be over- or underexposed.

When you change this setting, the LCD display immediately shows you the effect on your image. If you change modes, the camera returns to using the entire scene to determine the correct level of exposure.

Notes:

- ✧ It is recommended to adjust the EV value higher in the low light scenes such as indoor/night/tunnel/underground parking lot to obtain better low light video effect.
- ✧ To avoid overexposure, it is recommended to lower the EV value in high light areas such as beaches and snow to achieve better video effects.

- **Date Stamp: Off / Date / Date & Time**

Default setting is **Date & Time**.

If you turn on Stamp, this camera adds stamp to the video you take.

If you turn off Stamp, this camera will not add stamp to the video you take.

Note:

- ✧ This camera does not add date stamp to the videos you take if you record time lapse video or image stabilization is on.

■ **Vertical Video Settings:**

- **Resolution: 2K30 / 1080P30**

Default setting is **1080P30**.

- **Loop Recording : Off / 1Min / 3Min / 5Min**

Default setting is **Off**.

The files will be saved every 3 minutes if you choose 3 minutes. When the memory card is full, the new files will cover the existed one if the loop recording is on; If it is off, the camera won't record any more when the card is full, need to format the memory card or change a new one.

Notes:

- ✧ FAT32 format Micro SD card stops recording when the storage of each file is over 4GB and starts to record again on a new file. You cannot set 5min video file length when camera is at 4K 60fps.
- ✧ If you turn on Loop Video, Time Lapse Video, Time Lapse Duration and Slow Motion will not be available.

- **Video Format: MOV / MP4**

Default setting is **MP4**.

- **Exposure(EV): -2.0、 -1.0、 +0.0、 +1.0、 +2.0**

Default setting is **+0.0**.

By default, your camera uses the entire image to determine the appropriate exposure level. However, EV lets you select an area that you want the camera to prioritize when determining exposure. This setting is particularly useful in shots where an important region might otherwise be over- or underexposed.

When you change this setting, the LCD display immediately shows you the effect on your image. If you change modes, the camera returns to using the entire scene to determine the correct level of exposure.

Notes:

- ✧ It is recommended to adjust the EV value higher in the low light scenes such as indoor/night/tunnel/underground parking lot to obtain better low light video effect.
- ✧ To avoid overexposure, it is recommended to lower the EV value in high light areas such as beaches and snow to achieve better video effects.

- **Date Stamp: Off / Date / Date & Time**

Default setting is **Date & Time**.

If you turn on Stamp, this camera adds stamp to the video you take.

If you turn off Stamp, this camera will not add stamp to the video you take.

Note:

- ✧ This camera does not add date stamp to the videos you take if you record time lapse video or image stabilization is on.

■ **Fast Motion Settings:**

- **Resolution: 4K30 / 2K30 / 1080P30 / 1080P60 / 720P60 / 720P 120**

Default setting is **4K30**.

- **Fast Motion Movie: Off / 2x / 4x / 6x / 10x / 15x**

Default setting is **Off**.

A technical effect that makes image movement faster than normal speed.

Note:

✧ If Fast Motion is on, Time-Lapse Video and Slow Motion will not be available.

● **Exposure(EV): Exposure(EV): -2.0、 -1.0、 +0.0、 +1.0、 +2.0**

Default setting is **+0.0**.

By default, your camera uses the entire image to determine the appropriate exposure level. However, EV lets you select an area that you want the camera to prioritize when determining exposure. This setting is particularly useful in shots where an important region might otherwise be over- or underexposed.

When you change this setting, the LCD display immediately shows you the effect on your image. If you change modes, the camera returns to using the entire scene to determine the correct level of exposure.

Notes:

- ✧ It is recommended to adjust the EV value higher in the low light scenes such as indoor/night/tunnel/underground parking lot to obtain better low light video effect.
- ✧ To avoid overexposure, it is recommended to lower the EV value in high light areas such as beaches and snow to achieve better video effects.

● **Date Stamp: Off / Date / Date & Time**

Default setting is **Date & Time**.

If you turn on Stamp, this camera adds stamp to the video you take.

If you turn off Stamp, this camera will not add stamp to the video you take.

Note:

- ✧ This camera does not add date stamp to the videos you take if you record time lapse video or image stabilization is on.

◆ **Photo Setting Mode**

1. Verified in Photo/Burst Photo/Photo Lapse Mode, tap on "Image Size" icon to enter Photo/Burst/Photo Lapse Setting Mode. For example, when the camera is in Burst mode, tap on the "Image Size" icon at the bottom of the camera screen to enter the "Burst Photo" settings menu.
2. Quickly slide up/down on the screen to cycle through various options, tap on the target option or press the "Shutter Button" to select the desired option to set.

3. Tap the "Back" icon in the upper left corner of the screen to exit the settings.



■ Photo Settings:

- **Image Size:** 48MP / 30MP / 20MP / 14MP / 10MP / 8MP / 5MP / 2MP

Default setting is **20MP**.

- **ISO:** Auto / 100 / 200 / 400 / 800 / 1600 / 3200

Default setting is **Auto**.

ISO determines the camera's sensitivity to light, and creates a trade-off between brightness and resulting image noise. Image noise refers to the degree of graininess in the image. In low light, higher ISO values result in brighter images, but with greater image noise. Lower values result in lower image noise, but darker images. When you change this setting, the display immediately shows you the effect on your image.

- **Exposure(EV):** -2.0、 -1.0、 +0.0、 +1.0、 +2.0

Default setting is **0.0**.

By default, your camera uses the entire image to determine the appropriate exposure level. However, EV lets you select an area that you want the camera to prioritize when determining exposure. This setting is particularly useful in shots where an important region might otherwise be over- or underexposed.

When you change this setting, the LCD display immediately shows you the effect on your image. If you change modes, the camera returns to using the entire scene to determine the correct level of exposure.

Notes:

- ✧ It is recommended to adjust the EV value higher in the low light scenes such as indoor/night/tunnel/underground parking lot to obtain better low light Photo effect.
- ✧ To avoid overexposure, it is recommended to lower the EV value in high light areas such as beaches and snow to achieve better Photo effects.

- **Image Quality:** High / Medium / Low

Default setting is **High**.

Determines the image quality of the videos.

- **Sharpness: High / Medium / Low**

Default setting is **Medium**.

Sharpness adjusts the sharpness of the objects in your scene, which is crucial for capturing the fine details and enhancing the overall quality of your photos or videos.

- **Self Timer : Off / Delay 2S / Delay 5S / Delay 10S**

Default setting is **Off**.

A self-timer gives a delay between pressing the shutter release and the shutter's firing. It is most commonly used to let photographers to take a photo of themselves.

- **Long Exposure: Off / 1 second / 2 second / 5 second / 8 second / 30 second**

Default setting is **off**.

Long Exposure is an exposure method that selects a slow shutter speed. Long exposures can make dark scenes clearer and get fantastic effects. Especially in night vision scenes such as starry sky or city night traffic, the camera can also take fantastic photos at night.

Note:

- ✧ If Long Exposure is on, Time Lapse Photo, Time Lapse Duration, Burst Photo and Delay Timer will not be available.

- **Metering: Center / Multi / Spot**

Default setting is **Center**.

In photography, the metering mode refers to the way in which a camera determines exposure. Cameras generally allow the user to select between center, average or spot metering modes. The different metering modes allow the user to select the most appropriate one for use in a variety of lighting conditions

Notes:

- ✧ Center Metering: Also known as center-weighted metering mode. In this mode, the camera measures the brightness of the scene with more emphasis on the center area. It's ideal for taking selfie, close-up shots of flowers and grass, etc.
- ✧ Multi Metering: Also known as matrix metering mode. In this mode, the camera measures the brightness of the entire scene and calculates the exposure to avoid overexposure. It's suitable for use in scenes of even lights.
- ✧ Spot Metering: In this mode, the camera measures the brightness of a small area or spot in the scene, and sets the exposure based on that reading. It's perfect for taking close-ups.

- **Date Stamp: Off / Date / Date & Time**

Default setting is **Off**.

If you turn on Stamp, this camera adds stamp to the video you take.

If you turn off Stamp, this camera will not add stamp to the video you take.

- **Burst Photo Settings:**

- **Image Size: 48MP / 30MP / 20MP / 14MP / 10MP / 8MP / 5MP / 2MP**

Default setting is **20MP**.

- **Burst Photo: Off 、 3 shots / 1s 、 5 shots / 2s 、 10 shots / 4s**

Default setting is **3 shots / 1s**.

Continuous shooting can take up to 10 photos in a certain amount of time, making it ideal for fast-moving events.

Note

✧ If use Burst Photo is on, Time Lapse Photo, Time Lapse Duration and Long Exposure will not be available.

- **ISO: Auto / 100 / 200 / 400 / 800 / 1600 / 3200**

Default setting is **Auto**.

ISO determines the camera's sensitivity to light, and creates a trade-off between brightness and resulting image noise. Image noise refers to the degree of graininess in the image. In low light, higher ISO values result in brighter images, but with greater image noise. Lower values result in lower image noise, but darker images. When you change this setting, the display immediately shows you the effect on your image.

- **Exposure(EV): -2.0、 -1.0、 +0.0、 +1.0、 +2.0**

Default setting is **0.0**.

By default, your camera uses the entire image to determine the appropriate exposure level. However, EV lets you select an area that you want the camera to prioritize when determining exposure. This setting is particularly useful in shots where an important region might otherwise be over- or underexposed.

When you change this setting, the LCD display immediately shows you the effect on your image. If you change modes, the camera returns to using the entire scene to determine the correct level of exposure.

Notes:

✧ It is recommended to adjust the EV value higher in the low light scenes such as indoor/night/tunnel/underground parking lot to obtain better low light Photo effect.

- ✧ To avoid overexposure, it is recommended to lower the EV value in high light areas such as beaches and snow to achieve better Photo effects.

- **Image Quality: High / Medium / Low**

Default setting is **High**.

Determines the image quality of the videos.

- **Sharpness: High / Medium / Low**

Default setting is **Medium**.

Sharpness adjusts the sharpness of the objects in your scene, which is crucial for capturing the fine details and enhancing the overall quality of your photos or videos.

- **Effect: Normal / BW / Natural / Negative / Warm / Contrast**

Default setting is **Normal**.

You can choose from these options to get a desired shooting result.

- **Metering: Center / Multi / Spot**

Default setting is **Center**.

In photography, the metering mode refers to the way in which a camera determines exposure. Cameras generally allow the user to select between center, average or spot metering modes. The different metering modes allow the user to select the most appropriate one for use in a variety of lighting conditions

Notes:

- ✧ Center Metering: Also known as center-weighted metering mode. In this mode, the camera measures the brightness of the scene with more emphasis on the center area. It's ideal for taking selfie, close-up shots of flowers and grass, etc.
- ✧ Multi Metering: Also known as matrix metering mode. In this mode, the camera measures the brightness of the entire scene and calculates the exposure to avoid overexposure. It's suitable for use in scenes of even lights.
- ✧ Spot Metering: In this mode, the camera measures the brightness of a small area or spot in the scene, and sets the exposure based on that reading. It's perfect for taking close-ups.

- **Date Stamp: Off / Date / Date & Time**

Default setting is **Off**.

If you turn on Stamp, this camera adds stamp to the video you take.

If you turn off Stamp, this camera will not add stamp to the video you take.

■ Photo Lapse Settings:

- **Image Size: 48MP / 30MP / 20MP / 14MP / 10MP / 8MP / 5MP / 2MP**

Default setting is **20MP**.

- **Time-Lapse Photo: Off / 3 Sec / 5 Sec / 10 Sec / 30 Sec / 1 Min**

Default setting is **3 Sec**.

Time Lapse Photo captures a series of photos at specified intervals. Use this mode to capture photos of any activity, then choose the best ones later.

Note:

- ✧ If use Time Lapse Photo is on Burst Photo, Delay Timer and Long Exposure will not be available.

- **Interval Photo Time: Unlimited / 5 Min / 10 Min / 15 Min / 20 Min / 30 Min / 60 Min**

Default setting is **Unlimited**.

- **ISO: Auto / 100 / 200 / 400 / 800 / 1600 / 3200**

Default setting is **Auto**.

ISO determines the camera's sensitivity to light, and creates a trade-off between brightness and resulting image noise. Image noise refers to the degree of graininess in the image. In low light, higher ISO values result in brighter images, but with greater image noise. Lower values result in lower image noise, but darker images. When you change this setting, the display immediately shows you the effect on your image.

- **Exposure(EV): -2.0、 -1.0、 +0.0、 +1.0、 +2.0**

Default setting is **0.0**.

By default, your camera uses the entire image to determine the appropriate exposure level. However, EV lets you select an area that you want the camera to prioritize when determining exposure. This setting is particularly useful in shots where an important region might otherwise be over- or underexposed.

When you change this setting, the LCD display immediately shows you the effect on your image. If you change modes, the camera returns to using the entire scene to determine the correct level of exposure.

Notes:

- ✧ It is recommended to adjust the EV value higher in the low light scenes such as indoor/night/tunnel/underground parking lot to obtain better low light Photo effect.
- ✧ To avoid overexposure, it is recommended to lower the EV value in high light areas such as beaches and snow to achieve better Photo effects.

- **Image Quality: High / Medium / Low**

Default setting is **High**.

Determines the image quality of the videos.

- **Sharpness: High / Medium / Low**

Default setting is **Medium**.

Sharpness adjusts the sharpness of the objects in your scene, which is crucial for capturing the fine details and enhancing the overall quality of your photos or videos.

- **Effect: Normal / BW / Natural / Negative / Warm / Contrast**

Default setting is **Normal**.

You can choose from these options to get a desired shooting result.

- **Metering: Center / Multi / Spot**

Default setting is **Center**.

In photography, the metering mode refers to the way in which a camera determines exposure. Cameras generally allow the user to select between center, average or spot metering modes. The different metering modes allow the user to select the most appropriate one for use in a variety of lighting conditions

Notes:

- ✧ Center Metering: Also known as center-weighted metering mode. In this mode, the camera measures the brightness of the scene with more emphasis on the center area. It's ideal for taking selfie, close-up shots of flowers and grass, etc.
- ✧ Multi Metering: Also known as matrix metering mode. In this mode, the camera measures the brightness of the entire scene and calculates the exposure to avoid overexposure. It's suitable for use in scenes of even lights.
- ✧ Spot Metering: In this mode, the camera measures the brightness of a small area or spot in the scene, and sets the exposure based on that reading. It's perfect for taking close-ups.

- **Date Stamp: Off / Date / Date & Time**

Default setting is **Off**.

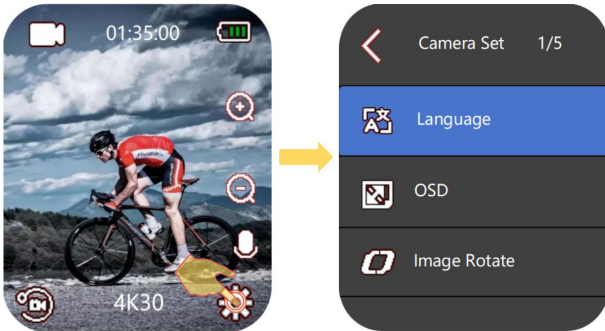
If you turn on Stamp, this camera adds stamp to the video you take.

If you turn off Stamp, this camera will not add stamp to the video you take.

◆ Camera Setting Mode

1. Verified in any Video Mode or Photo Mode, tap on "Setting" icon in the bottom right corner of the screen to enter Camera Setting Mode.

2. Quickly slide up/down on the screen to cycle through various options. Tap on the target option or press the "Shutter Button" to select the desired option to set.
4. Tap the "Back" icon in the upper left corner of the screen to exit the settings.



■ Camera Settings:

- **Language:** English/繁体中文/Italiano/Español/Deutsch/Français/日本語/...

Default setting is **English**.

You can set the camera's system language.

- **OSD: Off / On**

Default setting is **On**.

Set whether the function icon is displayed on the screen.

- **Image Rotate: Off / On**

Default setting is **Off**.

This setting determines the orientation of setting menu.

- **Screen Saver: Off / 30 second / 1min / 3min / 5min**

Default setting is **3min**.

Turns off the LCD display after a period of inactivity to save battery life. To turn on the LCD display again, press any button on the camera.

- **Auto Power Off: Off / 1Min / 3Min / 5Min**

Default setting is **3Min**.

Powers off your camera after a period of inactivity to save battery life.

- **Format Card: No / Yes**

To keep your micro SD card in good condition, reformat it on a regular basis. Reformatting erases all of your content, so be sure to offload your photos and videos first.

- **Date & Time:** 00:00:00 YYMMDD/ MMDDYY / DD/MMYY

The date and time are automatically updated when you connect your camera to the Wi-Fi app. However, you can manually change these settings, if needed.

Note:

✧ If the battery is removed from the camera for an extended period of time, the date and time will be reset automatically.

- **Sounds: Shutter / Beep / Volume / Boot-up**

- Shutter: On / Off**

- Set the shutter sound of the camera.

- Boot-up: On / Off**

- Set the startup sound of the camera.

- Beep: On / Off**

- Set the operating sound of the camera.

- Volume: 0/1/2/3**

- Set the volume of sound recorded by the camera.

- Record Audio: on/ off**

- Set up camera audio recording.

- **Remote: On / Off**

Default setting is **Off**.

After turning on the wireless remote control, it can only remotely operate the camera: start recording/stop recording/take photos.

- **Angle: Wide / Medium / Narrow**

Default setting is **Wide**.

This setting allows you to choose a desired field of view. Angle refers to how much of the scene (measured by degree) can be captured by the camera lens.

Note:

✧ Angle will be disabled when Image Stabilization is enabled.

- **Effect: Normal / BW / Natural / Negative / Warm / Contrast**

Default setting is **Normal**.

You can choose from these options to get a desired shooting result.

- **LDC (Distortion Calibration) : On / Off**

Default setting is **Off**.

Turn on Distortion Correction, it can correct the image distortion.

- **White Balance: Auto/Daylight/Cloudy/Tungsten Light /Fluorescent/Dive mode**

Default setting is **Auto**.

AWB (Auto White Balance) lets you adjust the color temperature of videos and photos to optimize for cool or warm lighting conditions. When you change this setting, the LCD

display immediately shows you the effect on your image.

- **System: Reset / System Info / Card Info**

Reset: Yes / No

This option resets all settings to their default values.

System Info: Software data

You can check the model, software version and updated time of your camera.

Card Info: Capacity/Free Space

CONNECTING TO iSMART DV2 APP

The Wi-Fi App lets you control your camera remotely using a smart phone or tablet. Features include full camera control, live preview, playback and sharing of selected content and more.

■ Download and Install iSmart DV2 app

- **Option 1:** Download the **iSmart DV2** App or to your phone from the Google Play or Apple App Store.



- **Option 2:** Scan the QR code below to download the **iSmart DV2** App or to your phone.



For Andriod Device



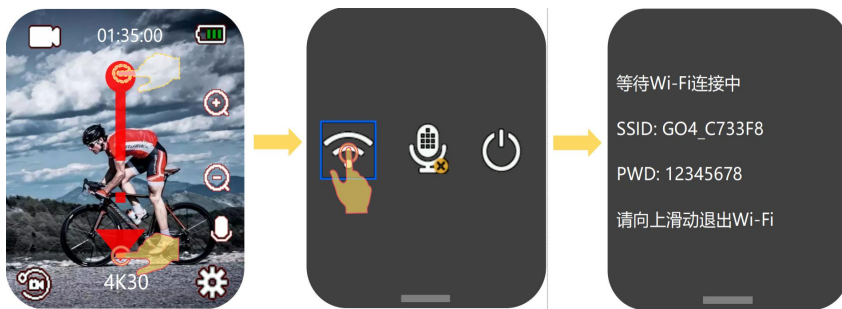
For IOS Device

Notes:

Google, Android, Google play, App Store and other marks are the trademarks of Google LLC.

■ Turn On / Off Camera Wi-Fi

Turn on the camera, and verified it is in Video/Photo mode, slide down on the screen to shortcut Mode, then tap on "WIFI" icon to turn on the camera's WIFI.



■ Connect to the iSmart DV2 APP

1. Turn on Camera's Wi-Fi;
2. Turn on Wi-Fi Setting of your phone, connect to the Wi-Fi SSID named "ActionCam Go4_XXXX (Random serial number)" ;
3. Enter the password: "1234567890" ;
5. Launch the app "iSmart DV2" on your phone.

Notes:

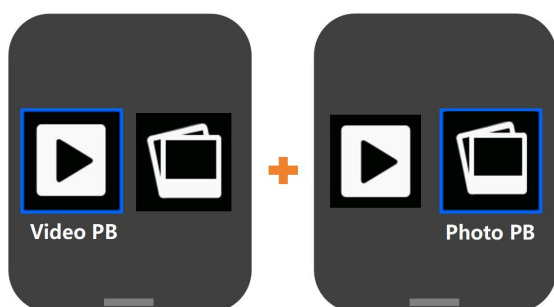
- To ensure a stable WIFI signal connection between the phone and the camera, it is recommended to turn off the mobile network on the phone after a successful WIFI connection between the phone and the camera.
- Once the camera's WiFi is connected, it will give you a "no Internet connection" or "weak security" notice, because your mobile signal is blocked. You can ignore it and continue the application to contact this connection screen for reference only.
- Camera WiFi is a point-to-point signal source that only supports one smartphone connection at a time, and does not support two or more smartphone connections. If two mobile phones are simultaneously enabled for WiFi, one phone will successfully connect to the camera's WiFi, while the other will no longer be connected to the camera and may even interfere with signal transmission.
- The WiFi bandwidth of the camera is relatively narrow, and its signal is affected by factors such as distance, other signals, electromagnetic waves, and obstacles. A signal delay of 2 to 5 seconds is normal. The WiFi distance is approximately 5 to 8 meters.
- When the phone and camera are connected via WiFi, the camera's battery level will increase. The temperature of the camera will rapidly increase, and the consumption of the camera battery will also increase. This is a normal phenomenon.
- Due to the wide variety of mobile phones in the market and the constant updates of mobile phone systems, WIFI applications require time to synchronize updates. If WIFI applications are not compatible with your phone, please let us know your phone model and system version information, and we will synchronize your phone as soon as possible.

- If you find that your phone cannot connect to the camera's WIFI, please confirm if your connection is correct. If so, it still cannot be connected. Please remove the camera's WiFi SSID from your phone's WiFi settings and reconnect. If necessary, you can also remove the WIFI application from your phone, download and reinstall it

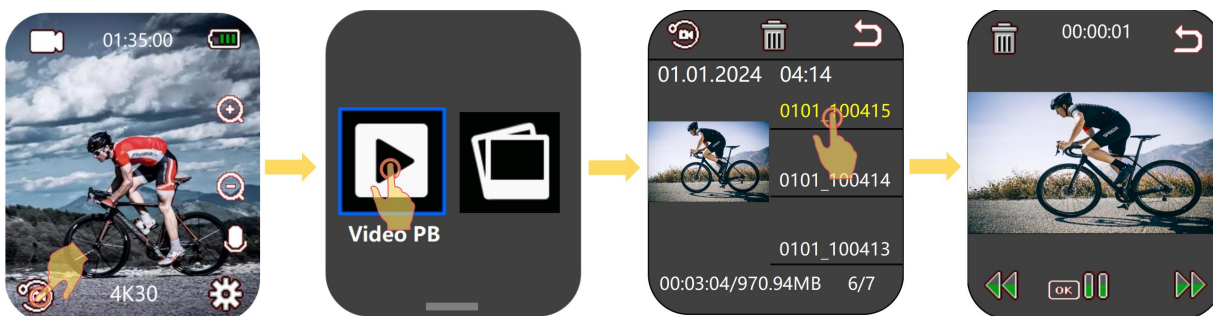
PLAYBACK YOUR CONTENT

You can playback your content on the camera, your computer, TV, or smartphone/tablet. You can also play back content by inserting the memory card directly into a device, such as a computer or compatible TV. With this method, playback resolution depends on the resolution of the device and its ability to play back that resolution.

There are 2 Playback Mode: Video Playback Mode and Photo Playback Mode. In Playback Mode, You can playback or delete your content on the camera.



■ Playback videos and photos on your camera



1. Verify in any Video / Photo mode.
2. Tap "Playback" icon in the bottom left corner of the screen to enter playback mode.
3. Tap "video Playback" icon / "photo playback" icon to enter into video playback / photo playback Menu.
4. In video playback / photo playback Menu, Slide up/down to locate the desired video or photo files.
5. Tap desired file to playback in full-screen view.
6. To exit the video or photo files, tap the "back" icon in the upper right corner of the screen.

Note: If your memory card contains a lot of content, it might take a minute for it to load.

■ Delete videos and photos on your camera

1. Enter into Video playback mode / Photo playback mode.
2. Slide up / down on the screen to locate the video or photo file you want to delete.
3. Tap the "Delete" icon at the top of the screen to enter the file deletion menu.
4. Tap the "Single file" to delete the selected file.

REMOTE CONTROLLER

Place the Remote Control On Your Wrist and Acquiesce Ultra-convenient Control For Hiking,Biking, Skiing,Bungee and more while installing the camera on your Helmet or other place.

Remote: 2.4G Transmission / Non waterproof

Range: 5M

■ How to turn on/turn off the remote function:

Select **ON/OFF** in the Camera Setting mode to turn on/off the remote controller.

■ VIDEO

● **To start recording:**

Press the Grey Video Button.

● **To stop recording:**

Press the Grey Video Button again.



■ PHOTO

● **To take a photo:**

Press the Red Photo Button. The camera will emit a camera shutter sound.

Notes

- Verify the camera is in Video/Photo preview mode, if the camera is in Playback or Setting Menu, the camera can not be controlled by the remote.
- If not used for a long time, be sure to remove the remote control battery and place it in a safe and reliable place.
- The remote control will always be in standby mode. If the indicator light is not on, it

indicates that the battery is low, please regularly and promptly replace the remote control battery.

BATTERY

The camera contains sensitive components, including the battery. Avoid exposing your camera to very cold or very hot temperatures. Low or high temperature conditions may temporarily shorten the battery life or cause the camera to temporarily stop working properly. Avoid dramatic changes in temperature or humidity when using the camera, as condensation may form on or within the camera.

■ Battery Storage and Handling

- Do not store in temperature above 140°F/60°C.
- Avoid exposing your camera to very cold or very hot temperatures. Low or high temperature conditions may temporarily shorten the battery life or cause the camera to temporarily stop working properly. Avoid dramatic changes in temperature or humidity when using the camera, as condensation may form on or within the camera.
- Do not dry the camera or battery with an external heat source such as a microwave oven or hair dryer.
- Damage to the camera or battery caused by contact with liquid inside the camera is not covered under the warranty.
- Do not store your battery with metal objects, such as coins, keys or necklaces. If the battery terminals come in contact with metal objects, this may cause a fire.
- Do not make any unauthorized alterations to the camera. Doing so may compromise safety, regulatory compliance, performance, and may void the warranty.
- Please do not throw the camera or its battery to the garbage, find a specific recycling point for it.

WARNING:

- Do not drop, disassemble, open, crush, bend, deform, puncture, shred, microwave, incinerate or paint the camera or battery.
- Do not insert foreign objects into the battery opening on the camera.
- Do not use the camera or the battery if it has been damaged - for example, if cracked, punctured or harmed by water. Disassembling or puncturing the battery can cause an explosion or fire.

■ Charging the Battery

1. Connect the camera to USB power supply (5V/1-2A commended).

- 2.The charging status light remains ON while the battery is charging.
- 3.The charging status light will turn OFF when the battery is fully charged.

Notes:

- Charging time: 4-hours for 5V 1A power supply
- Please make sure the camera is shuttled down while charging.
- Remove the battery before using as a dash camera and use 5V/1A brand-name car charger.

■ **Maximizing Battery Life**

If the battery reaches 0% while recording, the camera saves the file and powers off.

To maximize battery life, follow these guidelines when possible:

- Turn off Wireless Connections
- Capture video at lower frame rates and resolutions
- Use Screen Saver setting.

Specification could be subject to modification due to updating without notice, please regard the actual product as the standard form. If need the newest updated software, please contact our after sale service team!

FCC Warning Statement: Changes or modifications to this unit not expressly approved by the party responsible for compliance could void the user's authority to operate the equipment. This equipment has been tested and found to comply with the limits for a Class B digital device, pursuant to Part 15 of the FCC Rules. These limits are designed to provide reasonable protection against harmful interference in a residential installation. This equipment generates, uses and can radiate radio frequency energy and, if not installed and used in accordance with the instructions, may cause harmful interference to radio communications.

However, there is no guarantee that interference will not occur in a particular installation. If this equipment does cause harmful interference to radio or television reception, which can be determined by turning the equipment off and on, the user is encouraged to try to correct the interference by one or more of the following measures:

- Reorient or relocate the receiving antenna.
- Increase the separation between the equipment and receiver.
- Connect the equipment into an outlet on a circuit different from that to which the receiver is connected.
- Consult the dealer or an experienced radio/TV technician for help.

This device complies with Part 15 of the FCC Rules. Operation is subject to the following two conditions: (1) this device may not cause harmful interference, and (2) this device must accept any interference received, including interference that may cause undesired operation.

FCC Radiation Exposure Statement

The device has been evaluated to meet general RF exposure requirement. The device can be used in portable exposure condition without restriction.