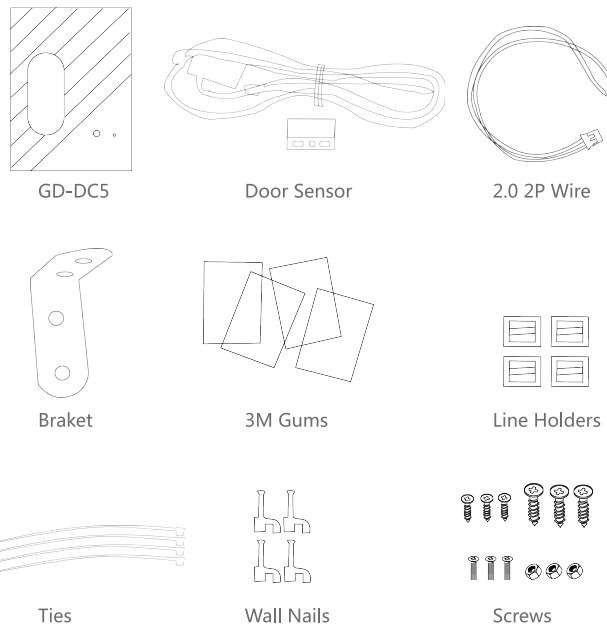


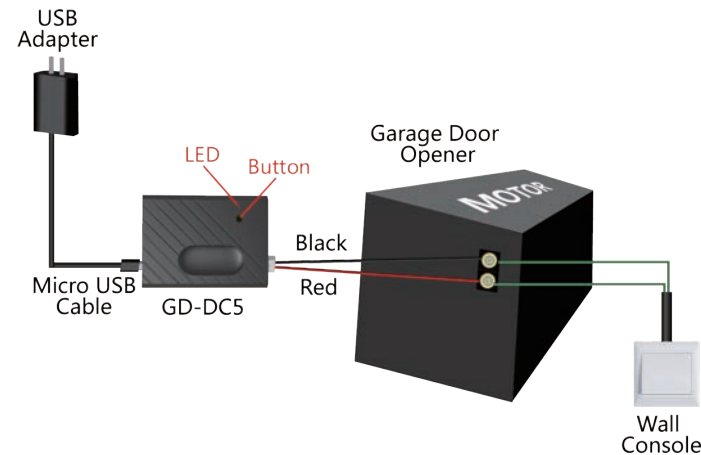
Wi-Fi SMART GARAGE DOOR OPENER

Model: GD-DC5



⚠ Test Device For Opener Compatibility

1. Power up the GD-DC5 with your USB adpater and micro-USB cable. The Red LED will blinks.
2. Use the included Red & Black wire connect the GD-DC5 to your opener: Put each end to the same terminals as the wall button wires are terminated to.
3. Use a tiny screw or nail to click the button in the GD-DC5, your garage door should activate.

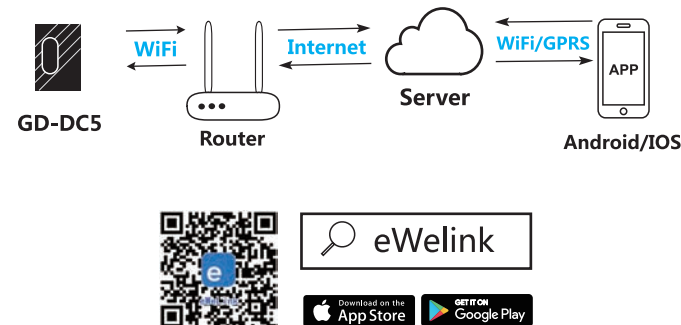


If this test fails, your device may not be compatible. Please refer to the list of compatible models on the back. For additional installation instructions, please visit our website and contact our support email.

Test OK! Click the button every time, the garage door will open or close.

Below are checklist before using the device:

- Your smart phone or tablet should have connected a 2.4G WiFi with internet.
- The device only supports 2.4G Wi-Fi. If you use a 5G router (it provides two Wi-Fi signals: 5G and 2.4G), please select the 2.4G WiFi to connect your smart phone.
- Download and launch the eWeLink App from App Store or Google Play store. Create an account or log in with your eWeLink account.
- During pairing process, make sure that your iOS or Android device and the GD-DC5 are within the range of your WiFi router.
- Make sure your router is MAC-open. If not, please cancel the router's MAC filtering setting first.



Add Device

- 1 Power up the GD-DC5 with your USB adapter , the Red LED will blinks.
- 2 Use a tiny screw or nail to keep pressing the button in the GD-DC5 for 5s, until the Red LED blinks fast blinks 3 times and repeats.
- 3 Launch eWeLink. Select the icon **+** on the bottom to add a device. Then select **Quick Pairing Mode (Touch)**, tap Next.

Quick Pairing (Touch)

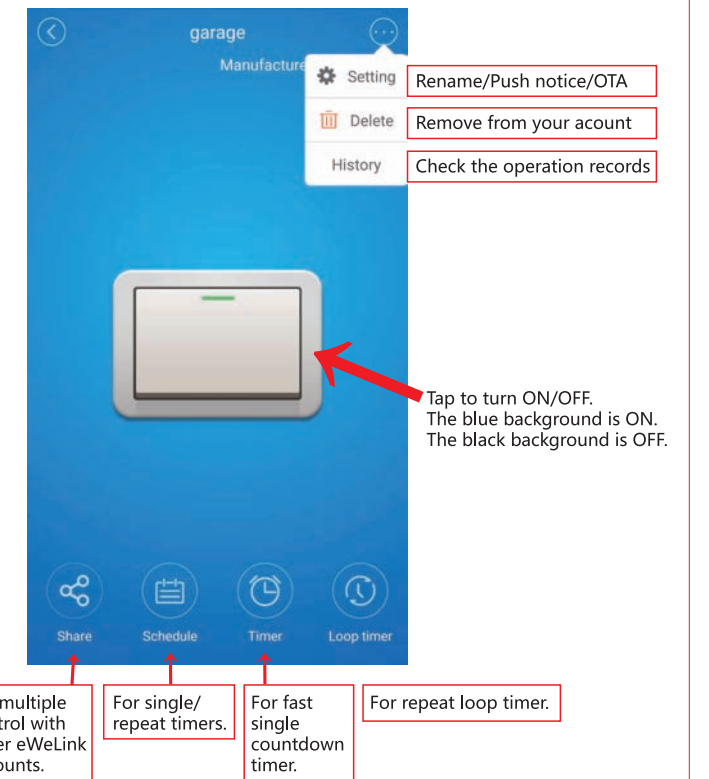
- 4 Select the same Wi-Fi as the one your mobile device connects with. Input correct passwords. Then, tap Next.
- 5 It will auto-connect with the device. The process will take 1-3 minutes. Once the process is complete, it will prompt you that you can rename the device. Enter a new name and Save.

If you fail to add it during the process, it will prompt you the FAQ.

ON: The door is open.
You can tap the icon to turn off.

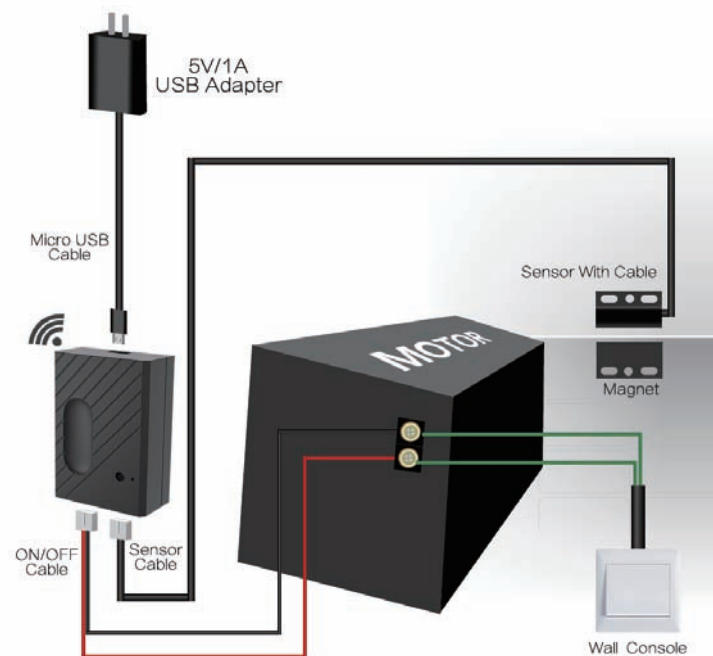
OFF: The door is close.
You can tap the icon to turn on.

offline: Fail to control.
You can tap the " ? " to read FAQ.



INSTALLATION

⚠ Do this installation After you successfully added the device to your app.



1st Step : Power up.

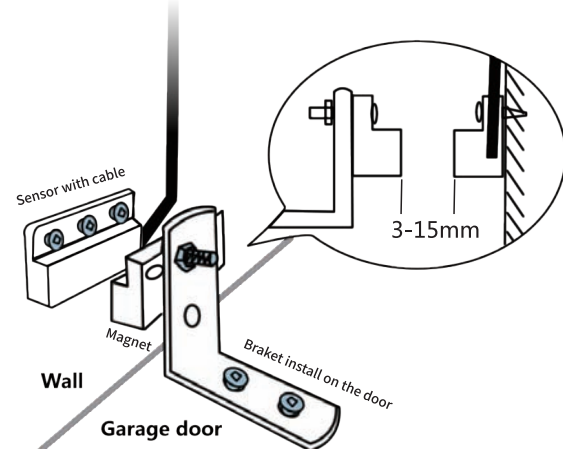
The 5V USB adapter and micro USB cable are not included in the package, please use your own ones. The 5V adapter should be more than 500mA output.

2nd Step : Connect to the wall console.

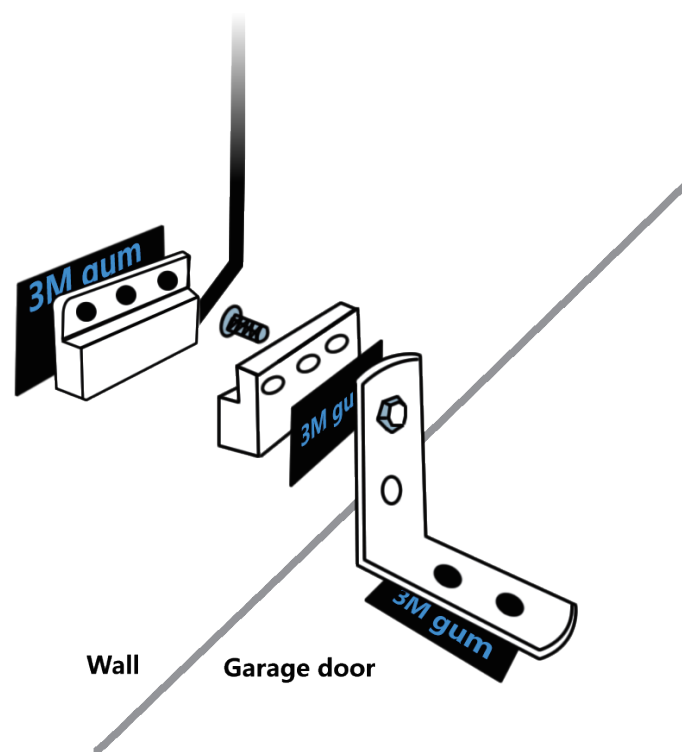
Insert the Red & Black wire 2.0mm terminal to the GD-DC5, then put each end to the same terminals as the wall button wires are terminated to.

3rd Step : Connect to the garage door.

Insert the 2.0mm terminal of the sensor to the GD-DC5, then steady install the sensor and the magnet of the gap within 3mm to 15mm on your garage door with screws/braket/3M gums/wall nail/line holders/ties.



If it is hard to install with screws , you can also use the 3M gums to finish. If you are worried about the steady, you can use both screws and 3M gums.



Works With Alexa

- 1 Open Alexa App, tap on the menu on upper left corner. Go to Skills.
- 2 Enter "ewelink"(in full lowercase) in the search field and search.
- 3 Tap "eWeLink Smart Home Fan".
- 4 Enable the skill.
- 5 Enter your eWeLink account information and tap on "Log in" to link your eWeLink account to your Amazon account. If your account is a phone number, you should select your country. If your account is an email address, please select a random country/region code.

Voice commands:
"Alexa, turn on {device name}"
"Alexa, turn off {device name}"

Works With Google Home

- 1 Launch Google Home app, tap the menu.
- 2 Tap Home control.
- 3 Under Devices, tap the + icon.
- 4 Tap Smart We Link.
- 5 Enter your eWeLink account email address/phone number, those phone number accounts need to select the right country code. Enter your password and tap Log In. If your eWeLink account is a phone number, you should select your country. If your account is an email address, please select a random country/region code.

Voice commands:
"Hey google, turn on {device name}"
"OK google, turn off {device name}"

Works With iFTTT

- 1 Launch IFTTT app, tap Search. Enter "eWeLink" to search. You'll find the "eWeLink Smart Home" . Tap on it.
- 2 Enter "eWeLink Smart Home" page.
- 3 Then you'll need to enter eWeLink account and log in.
- 4 Go to My Applets, tap "+" to create your own applet.

Works With Google Nest

- 1 Open eWeLink.
- 2 Tap **+** , select **Nest Device**, Next.
- 3 You'll need to log in your Nest account.
- 4 You'll enter into the Nest Device list. Check your desired nest device, confirm.
- 5 The device will be in eWeLink list.



Scan to visit our website:
www.eachen.cc
Check the compatible garage door openers list.

EACHEN
DIY YOUR SMART HOME

Contact us:
Support: ewelink@sina.com
Order: xuhaihui8888@hotmail.com
Tel:+86-18007552090
ADD: SZ, GD, CN, 518000

FCC Statement

This equipment has been tested and found to comply with the limits for a Class B digital device, pursuant to part 15 of the FCC rules. These limits are designed to provide reasonable protection against harmful interference in a residential installation. This equipment generates, uses and can radiate radio frequency energy and, if not installed and used in accordance with the instructions, may cause harmful interference to radio communications. However, there is no guarantee that interference will not occur in a particular installation. If this equipment does cause harmful interference to radio or television reception, which can be determined by turning the equipment off and on, the user is encouraged to try to correct the interference by one or more of the following measures:

- Reorient or relocate the receiving antenna.
- Increase the separation between the equipment and receiver.
- Connect the equipment into an outlet on a circuit different from that to which the receiver is connected.
- Consult the dealer or an experienced radio/TV technician for help.

To assure continued compliance, any changes or modifications not expressly approved by the party.

Responsible for compliance could void the user's authority to operate this equipment. (Example- use only shielded interface cables when connecting to computer or peripheral devices).

This equipment complies with Part 15 of the FCC Rules. Operation is subject to the following two conditions:

- (1) This device may not cause harmful interference, and
- (2) This device must accept any interference received, including interference that may cause undesired operation.

FCC Radiation Exposure Statement:

Any Changes or modifications not expressly approved by the party responsible for compliance could void the user's authority to operate the equipment.

The equipment complies with FCC Radiation exposure limits set forth for uncontrolled environment. This equipment should be installed and operated with minimum distance 20cm between the radiator and your body.