

MUSICLENS

MUSIC / RADIO / PHONE

INSTRUCTION MANUAL

HELLO

Welcome to use



TAKE YOUR MUSICLENS OUT

It looks great, right?




2

PRESS & HOLD 'POWER' BUTTON FOR 3 SECONDS



 Blue light flashes, it is on!

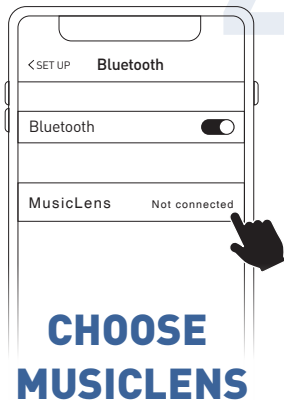
 Red & blue flash, start bluetooth pairing

3

TURN ON THE BLUETOOTH OF YOUR DEVICE



4



Connected!

Play music through any
music application in your phone

5

WEAR IT AND PLAY

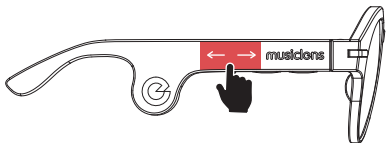
Wanna connect
to another device?



Press 'Switch' button for two
seconds can enter the re-pairing mode

NEXT

TRY COMMANDS



ADJUST VOLUME

Swipe forward, volume up

Swipe backward, volume down

Touch area is on the right side
of MusicLens, try it!

7

PLAY & PAUSE

Press 'Power' Button Once



NEXT TRACK

Press 'Power' Button Twice



ANSWERING PHONE CALLS

Decline Press Twice
Pick Up Press Once



Press once to hang up when you
done with your phone call Internal
microphonesuperior vhigh quality
sounde call

FM RADIO

Fm Mode On



Press, again to turn off radio, press fm/bt twice. Find a fm frequency that fits!

10

FINAL STEP**POWER OFF**

Long hold power for 3 secs
red indicator on, using musiclens
is just as easy

BESIDES?

For Qualified Products, Yes
We Are Serious.

VIBRATION LEVEL



We've Prepared 3 Levels Of Bone
Conduction Vibration Strength



Double Press 「FM/BT」

Wherever you are, always enjoy
comfortable music

INTELLIGENT WEARING DETECTION

MusicLens would know whether
you have put it on or not



**Take It Off, Music Stops
Put It Back On Music Rocks!**

Enjoy your music life
by every time you wear MusicLens

ACTIVATE VOICE ASSISTANT

Long hold 「FM/BT」 button for
5 seconds



HeySiri Or Alexa, Or Bixby, Or Assistant...

AUTOMATION

**Auto Call Answer****5 Seconds****Auto Connect****Turn On Musiclens Next Time
To Your Last Device****Auto Power-off****Take Off 1 Hour**

Every function is available
to set up in「Control Application」

TECH SPECS

Size	VOGUE: 6.18 x 5.7 x 2.2 (in)
	MODERN: 6.22 x 5.7 x 2.12 (in)
	GEEK: 6.18 x 5.7 x 1.57 (in)
Weight	VOGUE: 50.0 (g)
	MODERN: 53.2 (g)
	GEEK: 41.4 (g)
Audio	Bone Conduction Speaker
Bluetooth	BLUETOOTH 5.0
Phone	Answer Call, Redial Call, Hold Call, Mute
Music	Play, Stop, Next and Previous Song, Volume Control
Sensor	Touch and Heart Beat Sensor
Resistant	IP54 rating to protect from water, dust and dirt
Radio	Press "Switch Mode" button to open FM
Battery	6 to 9 hours battery life
Charge	TYPE-C charge, 0.5 to 1 hour charge time
Lens	Colorful polarized lens 98% block UV and IR

IF Problems Occurs

**IT' S OKAY
SHIT HAPPENS**

info@music-lens.com

Contact MusicLens Global Customer Service Line

CERTIFICATION

Supplier's Declaration of Conformity

Unique Identifier: MusicLens Modern Black, Modern Green,
Geek, Vogue Red, Vogue Black

Responsible Party – U.S. Contact Information

MusicLens Inc.
311 E VALLEY BLVD#112 PMB27
SANGABRIEL, CA
91776
www.music-lens.com

FCC Compliance Statement

This device complies with Part 15 of the FCC Rules. Operation is subject to the following two conditions: (1) This device may not cause harmful interference, and (2) this device must accept any interference received, including interference that may cause undesired operation.

Caution: The user is cautioned that changes or modifications not expressly approved by the party responsible for compliance could void the user's authority to operate the equipment.

Note: This equipment has been tested and found to comply with the limits for a Class B digital device, pursuant to part 15 of the FCC Rules. These limits are designed to provide reasonable protection against harmful interference in a residential installation. This equipment generates uses and can radiate radio frequency energy and, if not installed and used in accordance with the instructions, may cause harmful interference to radio communications. However, there is no guarantee that interference will not occur in a particular installation. If this equipment does cause harmful interference to radio or television reception, which can be determined by turning the equipment off and on, the user is encouraged to try to correct the interference by one or more of the following measures:

- Reorient or relocate the receiving antenna.
- Increase the separation between the equipment and receiver.
- Connect the equipment into an outlet on a circuit different from that to which the receiver is connected.
- Consult the dealer or an experienced radio/TV technician for help.

YOUR FIRST SMART GLASSES

MusicLens

Stylish Smart Audio Glasses

musiclens